

# HIGHWAY 20 & MAIN STREET, ASHTON

BUILT TO SUIT



## PROPERTY DETAILS

HIGHWAY 20 & MAIN STREET, ASHTON, ID 83420

- Built to Suit Available
- 4.5 Acres
- Suitable for office, retail, or other
- Great spot for tow companies, repair companies, rental companies, restaurants, car wash, or other use



**MOUNTAIN WEST**  
COMMERCIAL REAL ESTATE

### DUSTIN MORTIMER

[dmortimer@mwcre.com](mailto:dmortimer@mwcre.com)

direct 208.874.0230

[View Profile](#)

### NATE CLARK

[nclark@mwcre.com](mailto:nclark@mwcre.com)

direct 208.757.7477

[View Profile](#)

**FULL SERVICE  
COMMERCIAL REAL ESTATE**

3345 Chasewood Avenue

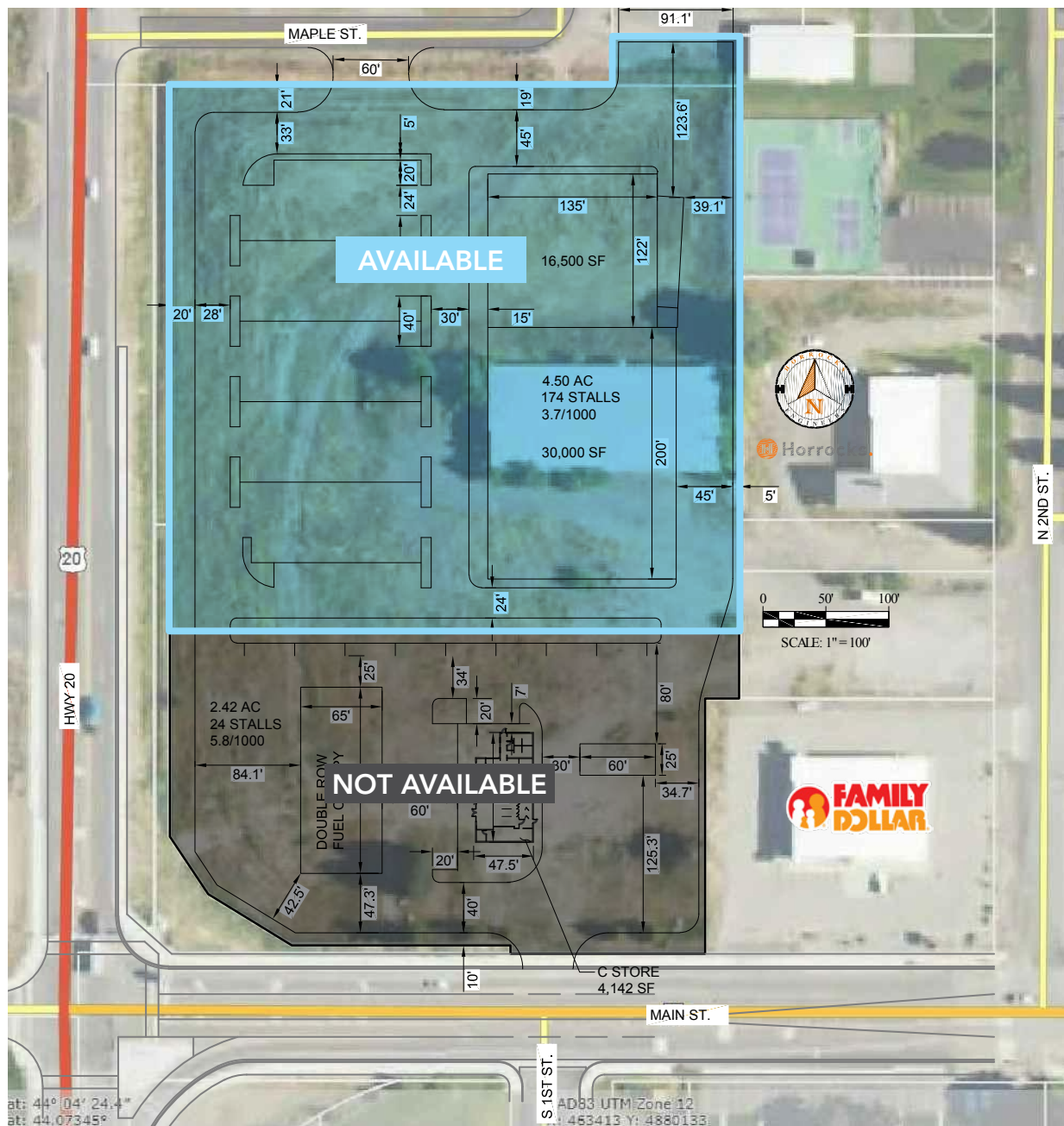
Ammon, ID 83406

Office 208.874.0230

[www.mwcre.com](http://www.mwcre.com)

# HIGHWAY 20 & MAIN STREET, ASHTON

## CONCEPTUAL LAYOUT



**MOUNTAIN WEST**  
COMMERCIAL REAL ESTATE

**DUSTIN MORTIMER**

dmortimer@mwcre.com

direct 208.874.0230

[View Profile](#)

**NATE CLARK**

nclark@mwcre.com

direct 208.757.7477

[View Profile](#)

**FULL SERVICE  
COMMERCIAL REAL ESTATE**

3345 Chasewood Avenue

Ammon, ID 83406

Office 208.874.0230

[www.mwcre.com](http://www.mwcre.com)





**MOUNTAIN WEST**  
COMMERCIAL REAL ESTATE

**DUSTIN MORTIMER**

[dmortimer@mwcre.com](mailto:dmortimer@mwcre.com)

direct 208.874.0230

[View Profile](#)

**NATE CLARK**

[nclark@mwcre.com](mailto:nclark@mwcre.com)

direct 208.757.7477

[View Profile](#)

**FULL SERVICE  
COMMERCIAL REAL ESTATE**

3345 Chasewood Avenue

Ammon, ID 83406

Office 208.874.0230

[www.mwcre.com](http://www.mwcre.com)





**MOUNTAIN WEST**  
COMMERCIAL REAL ESTATE

## DUSTIN MORTIMER

dmortimer@mwcre.com  
direct 208.874.0230  
[View Profile](#)

## NATE CLARK

nclark@mwcre.com  
direct 208.757.7477  
[View Profile](#)

## FULL SERVICE COMMERCIAL REAL ESTATE

3345 Chasewood Avenue  
Ammon, ID 83406  
Office 208.874.0230  
[www.mwcre.com](http://www.mwcre.com)