

DOWNTOWN COMMERCIAL PROPERTY FOR SALE

721 & 723-725 CARROLL STREET
PERRY, GA 31069
HOUSTON COUNTY

±7,200 SF
±0.41 ACRE

SALE PRICE:
\$825,000

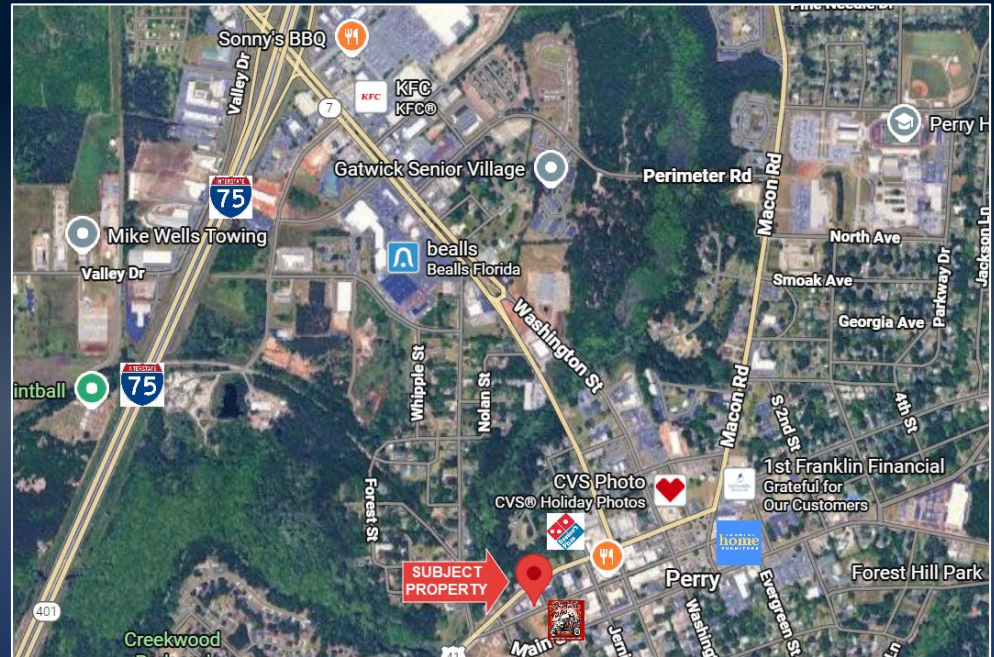


PAYTON HORTON C: 478.733.7132
PHORTON@THESUMMITGROUPMACON.COM
1120 BALL STREET, PERRY, GA 31069
O: 478.313.5213
WWW.THESUMMITGROUPMACON.COM



PROPERTY INFORMATION

- Three buildings totaling $\pm 7,200$ SF
 - Bldg 721: $\pm 2,000$ SF
 - Bldg 723: $\pm 1,500$ SF office/ $\pm 2,500$ SF warehouse
 - Bldg 725: $\pm 1,200$ SF - **Currently Leased**
- ± 0.41 acre
- Zoned: C-3 (Commercial)
- High visibility location in the heart of downtown Perry, just steps away from restaurants, retail and entertainment including BBQ Monsters To Go, Bodega Brew, Acres & Oak Kitchen, Durden's Prime Meats, Morris Bank, FitCo Health Club, The Perry Players Music Theatre and more.
- Points of Interest -
 - Perry City Hall - ± 0.4 mile
 - Georgia National Fairgrounds - ± 1.7 miles
 - I-75 (Exit 135) - ± 1.3 miles
 - I-75 (Exit 134) - ± 1.2 miles
- ***Lease options available. Call Agent for details***



721 & 723-725 CARROLL STREET
PERRY, GA 31069
HOUSTON COUNTY

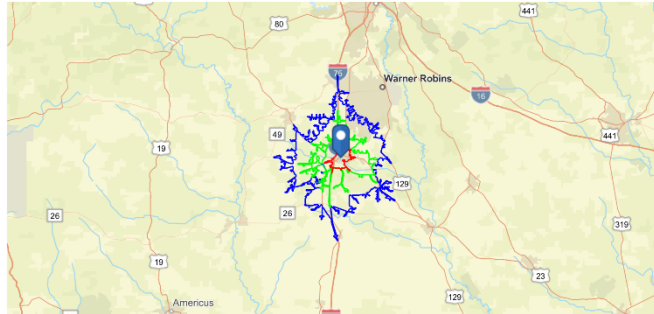


DEMOGRAPHICS

Benchmark Demographics

721 Carroll St, Perry, Georgia, 31069

Drive Time: 5 minutes, Drive Time: 10 minutes, Drive Time: 15 minutes



Age Segments	5 minute drive	10 minute drive	15 minute drive	ZIP Codes 31069 (Perry)	Counties Houston County	States Georgia	United States of America
Population Age 0-4	6.39%	6.12%	5.92%	6.07%	6.04%	5.58%	5.39%
Population Age 5 to 9	6.88%	6.75%	6.51%	6.64%	6.44%	5.94%	5.75%
Population Age 10 to 14	6.48%	6.50%	6.98%	6.61%	6.79%	6.21%	5.98%
Population Age 15 to 19	6.86%	6.40%	6.81%	6.51%	6.89%	6.70%	6.47%
Population Age 20 to 34	19.48%	18.72%	19.03%	18.49%	20.38%	21.22%	20.33%
Population Age 35 to 54	24.76%	26.06%	27.13%	26.47%	26.01%	25.76%	25.20%
Population Age 55 to 74	19.55%	20.96%	21.07%	21.04%	21.23%	21.81%	22.82%
Population Age 75+	9.60%	8.49%	6.54%	8.18%	6.25%	6.81%	8.05%



Based on ideas by Gary M. Ralston, CCIM, SIOR, CPM, CRE, CLS, CDP, CRX, FRICS -
Saunders Ralston Dantzler Realty

Household Income	5 minute drive	10 minute drive	15 minute drive	Counties Houston County	States Georgia	United States of America
<\$15,000	20.6%	11.9%	7.9%	8.2%	9.0%	8.3%
\$15,000-\$24,999	12.4%	8.3%	4.7%	4.8%	6.3%	5.9%
\$25,000-\$34,999	10.7%	7.6%	4.9%	6.6%	6.5%	6.3%
\$35,000-\$49,999	9.7%	9.3%	8.8%	10.5%	10.2%	9.8%
\$50,000-\$74,999	11.6%	16.7%	14.2%	17.0%	15.9%	15.6%
\$75,000-\$99,999	13.5%	14.8%	14.1%	13.7%	12.7%	12.5%
\$100,000-\$149,999	10.8%	15.5%	23.4%	22.5%	18.0%	17.8%
\$150,000-\$199,999	6.7%	11.1%	13.2%	10.3%	9.4%	9.8%
\$200,000+	3.9%	4.8%	8.9%	6.5%	12.0%	14.0%

Key Facts	5 minute drive	10 minute drive	15 minute drive	Counties Houston County	States Georgia	United States of America
Population	8,354	20,260	51,041	178,106	11,269,916	339,887,819
Daytime Population	14,204	23,640	47,088	177,705	11,204,031	338,218,372
Employees	2,784	8,748	23,786	81,496	5,364,200	167,630,539
Households	3,310	7,908	18,849	67,885	4,271,670	132,422,916
Average HH Size	2.37	2.46	2.65	2.60	2.58	2.50
Median Age	37.8	38.8	38.3	37.5	38.3	39.6

Housing Facts	5 minute drive	10 minute drive	15 minute drive	Counties Houston County	States Georgia	United States of America
Median Home Value	197,005	262,614	305,739	276,092	338,742	370,578
Owner Occupied %	53.7%	68.3%	75.9%	66.3%	64.9%	64.2%
Renter Occupied %	46.3%	31.7%	24.1%	33.8%	35.1%	35.8%
Total Housing Units	3,555	8,345	19,784	72,696	4,679,416	146,800,552

Income Facts	5 minute drive	10 minute drive	15 minute drive	Counties Houston County	States Georgia	United States of America
Median HH Income	\$45,585	\$69,433	\$90,299	\$79,270	\$78,207	\$81,624
Per Capita Income	\$27,715	\$34,141	\$40,077	\$36,784	\$41,403	\$45,360
Median Net Worth	\$43,694	\$169,089	\$283,829	\$196,526	\$199,699	\$228,144

Source: This infographic contains data provided by Esri (2025, 2030), Esri-Data Axle (2025).



The information contained herein has been compiled from various sources, both private and public. It is accurate and complete only to the extent to which The Summit Group has been able to ascertain from third party sources. As such, no warranty or guarantee is given or implied with regard to the accuracy or completeness of any information contained herein. Any interested party shall be required to conduct its own due diligence and investigations to verify, review, audit, or otherwise insure the information contained herein.

