

PLAZA CENTER

10900 NE 8TH STREET, BELLEVUE, WA 98004

For Sublease

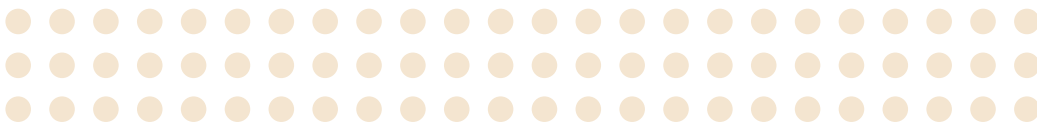


CBRE



PROPERTY FEATURES

- 10th Floor: 16,628 SF
- Available Immediately
- Master Lease Expires September 30, 2028.
- Will consider shorter terms
- Aggressive well below market asking rate
- Plug & Play new build out with high end finishes
- New building common area improvements recently completed which include fitness center, conference facility with reservable tenant lounge, secured bike storage and cafe

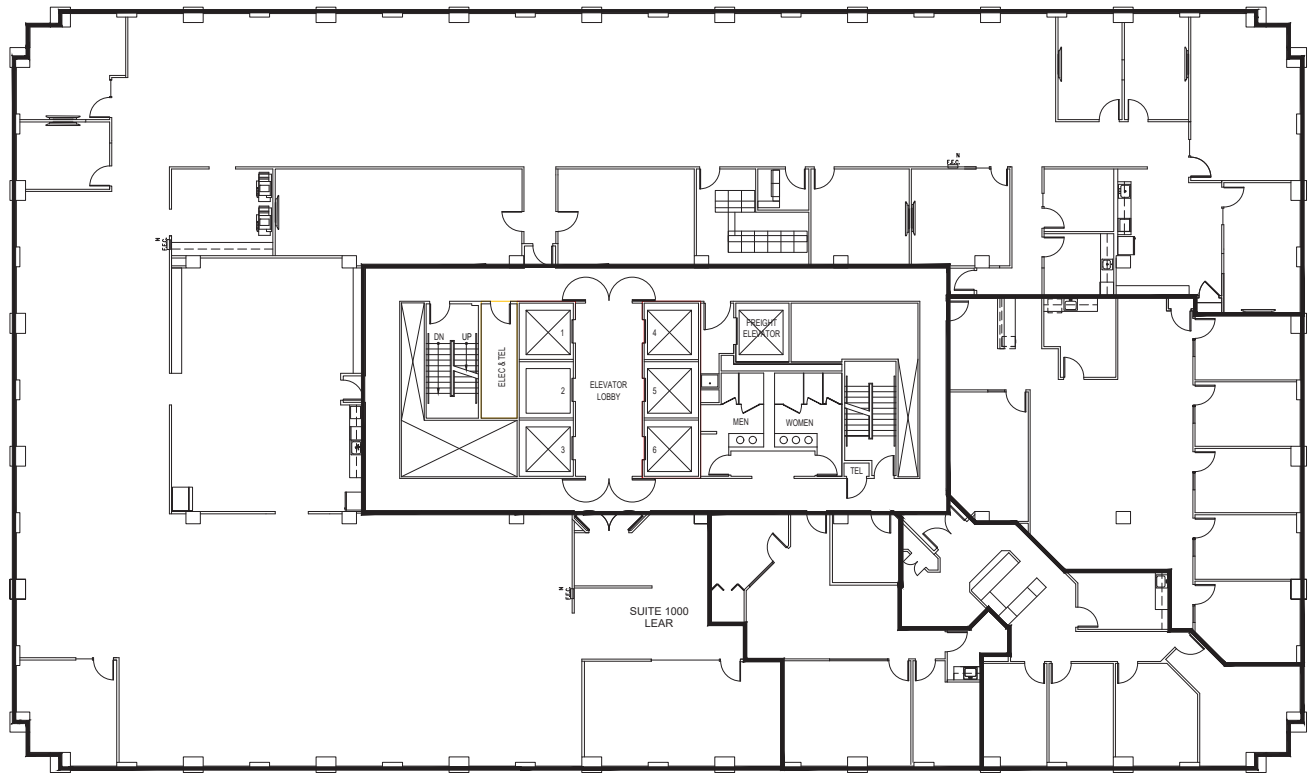


SUITE 1000

16,628 SF

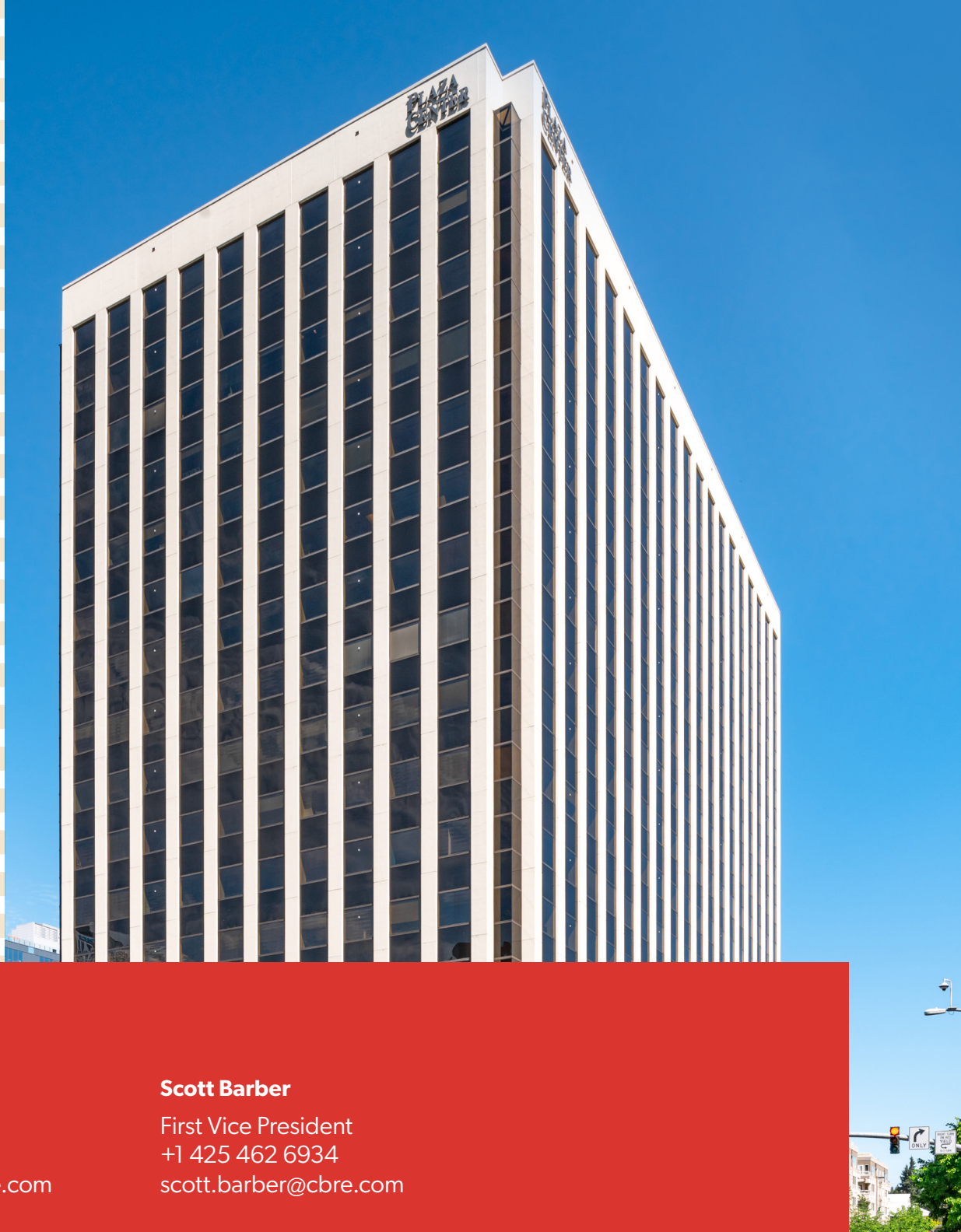


VIRTUAL TOUR



PLAZA CENTER

10900 NE 8TH STREET, BELLEVUE, WA 98004



CONTACTS

Jacob Hamlin

Vice President
+1 425 462 6930
jacob.hamlin@cbre.com

Scott Barber

First Vice President
+1 425 462 6934
scott.barber@cbre.com

© 2025 CBRE, Inc. All rights reserved. This information has been obtained from sources believed reliable but has not been verified for accuracy or completeness. CBRE, Inc. makes no guarantee, representation or warranty and accepts no responsibility or liability as to the accuracy, completeness, or reliability of the information contained herein. You should conduct a careful, independent investigation of the property and verify all information. Any reliance on this information is solely at your own risk. CBRE and the CBRE logo are service marks of CBRE, Inc. All other marks displayed on this document are the property of their respective owners, and the use of such marks does not imply any affiliation with or endorsement of CBRE. Photos herein are the property of their respective owners. Use of these images without the express written consent of the owner is prohibited.

CBRE