

OFFICE / MEDICAL FOR SALE

824 Greenbrier Parkway
Chesapeake, VA, 23320



ABOUT PROPERTY

- ± 8,998 SF Office
- 1.06 acres
- PUD Zoning
- Built in 2004
- Greenbrier Parkway signage exposure
- 56,761 VPD along Greenbrier Parkway
- Abundant parking, 43 shared spaces
- Owner - Occupant Opportunity with multiple options ranging from 1,430 - 8,998 SF
- Sale Price: \$2,500,000



For more information:

RYAN KING | 757.640.8210 | RyanKing@HarveyLindsay.com
PETER D. ABRAHAM, CCIM | 757.640.8226 | PeterAbraham@HarveyLindsay.com
JONATHAN LEVIN | 757.647.8530 | JonathanLevin@HarveyLindsay.com

HARVEY LINDSAY
COMMERCIAL REAL ESTATE

www.harveylindsay.com

2ND FLOOR OFFICE PHOTOS

824 Greenbrier Pkwy, Chesapeake, VA



RECEPTION AREA



CONFERENCE ROOM



OPEN AREA



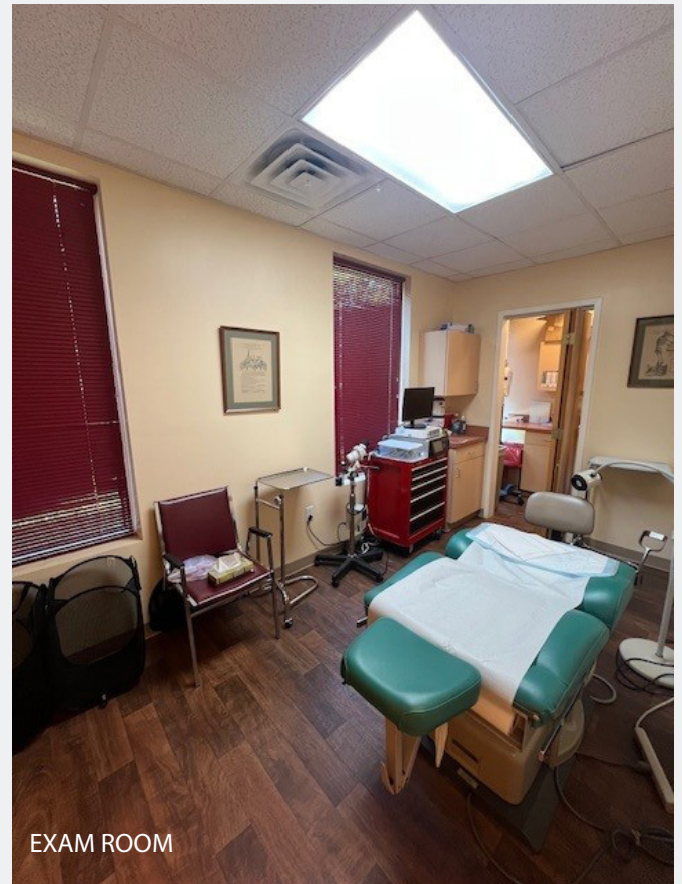
OFFICE

1ST FLOOR MEDICAL PHOTOS

824 Greenbrier Pkwy, Chesapeake, VA



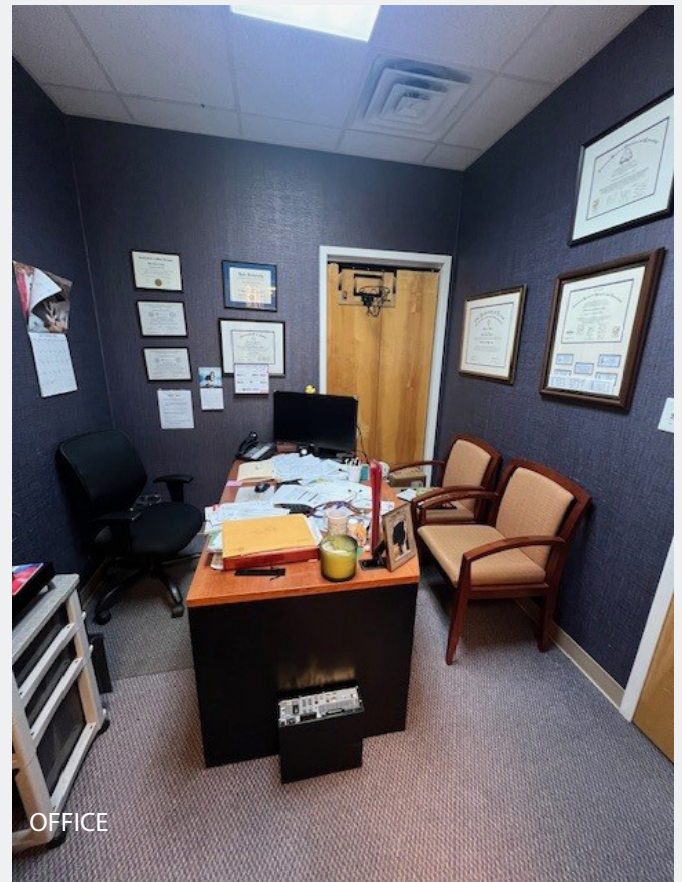
EXAM ROOM



EXAM ROOM



OFFICE



OFFICE

1ST FLOOR PLAN

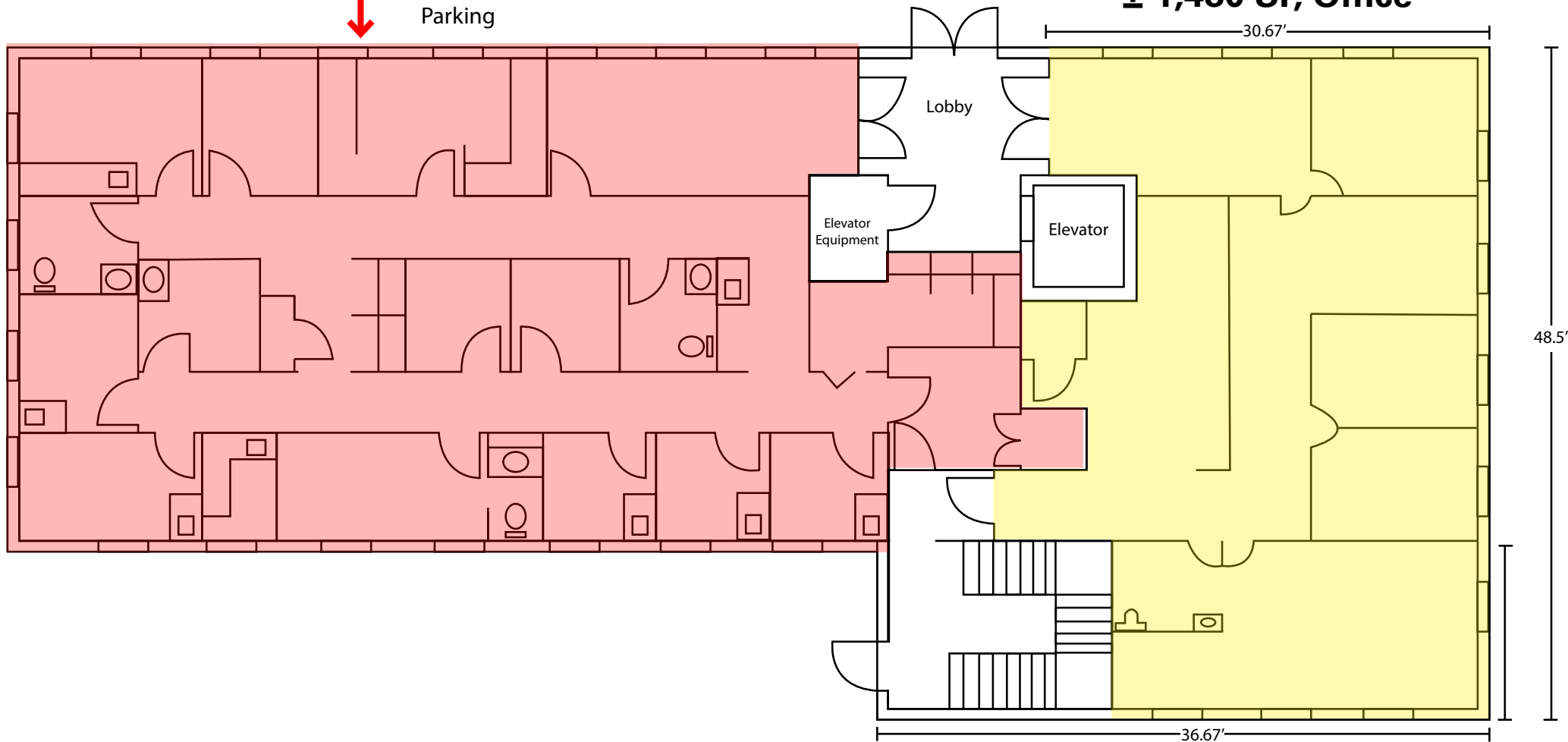
824 Greenbrier Pkwy, Chesapeake, VA

± 2,462 SF, Medical

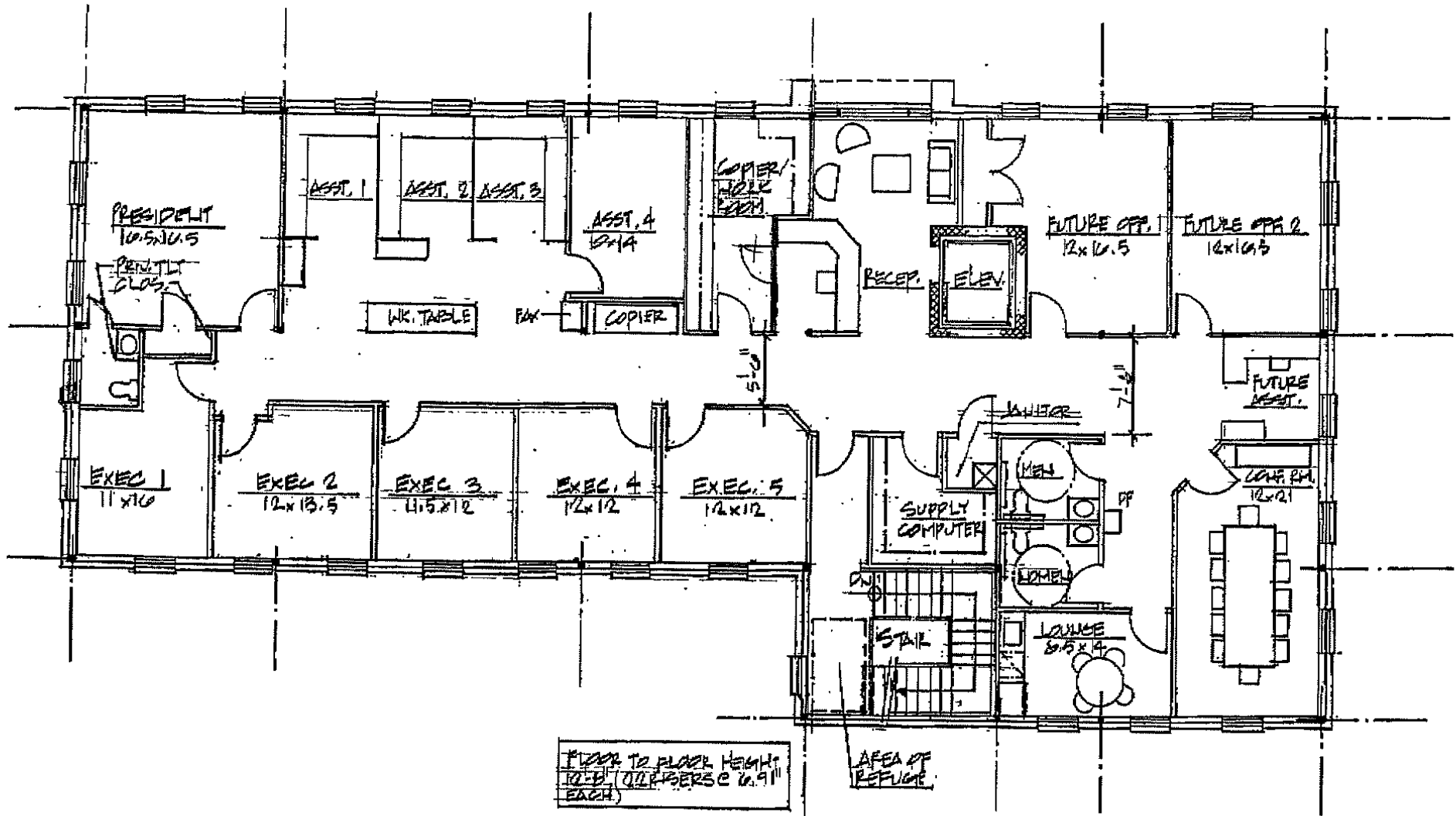


Parking

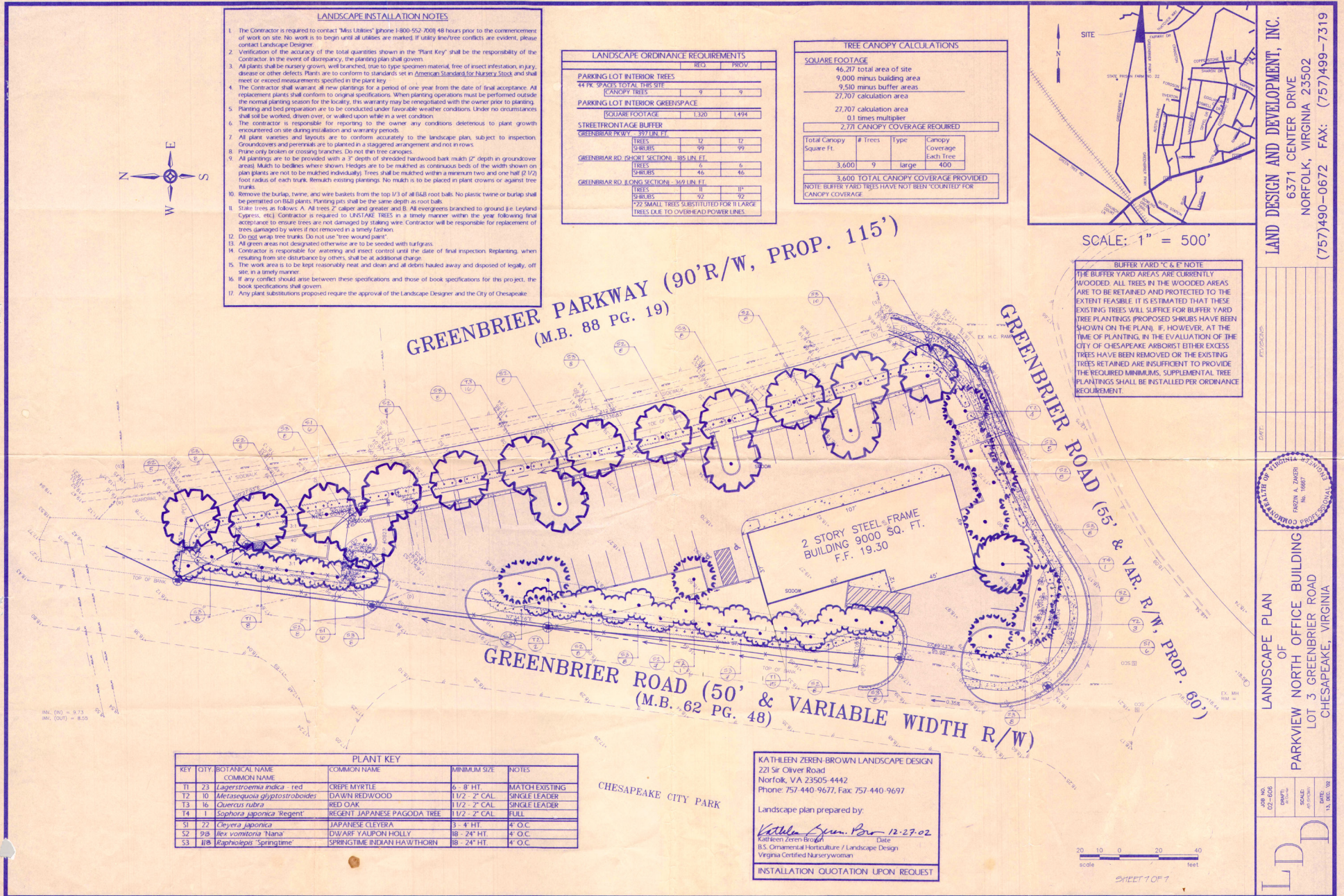
± 1,480 SF, Office



± 4,400 SF, Office



OCCUPANT		LAST
MAX. STAFF	15	
VISITORS	4	
TOTAL OCC.	19	



AREA OVERVIEW

824 Greenbrier Pkwy, Chesapeake, VA



HARVEY LINDSAY
COMMERCIAL REAL ESTATE

For more information:

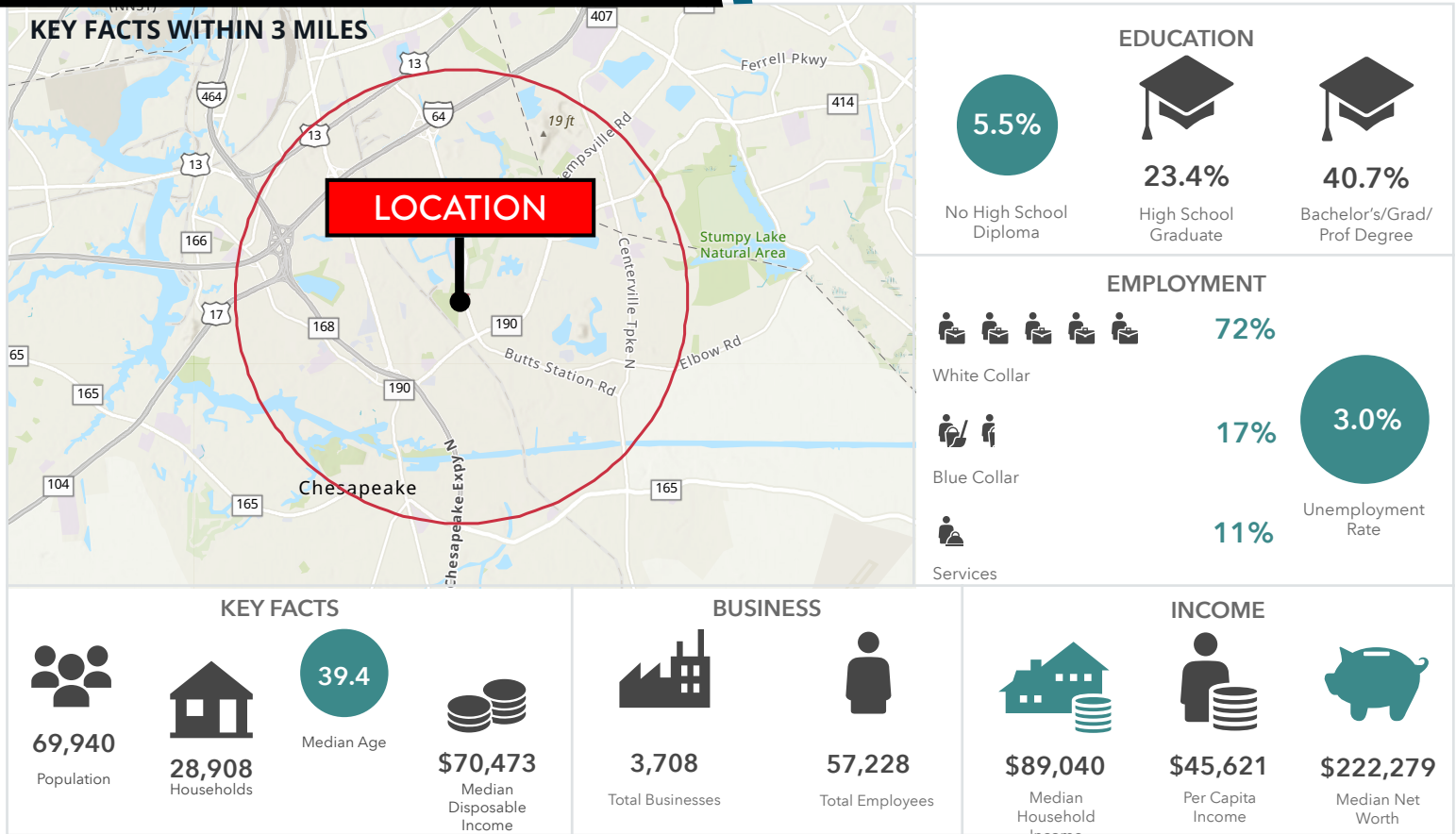
RYAN KING | 757.640.8210 | RyanKing@HarveyLindsay.com

PETER D. ABRAHAM, CCIM | 757.640.8226 | PeterAbraham@HarveyLindsay.com

JONATHAN LEVIN | 757.647.8530 | JonathanLevin@HarveyLindsay.com

DEMOGRAPHICS

824 Greenbrier Pkwy, Chesapeake, VA



HARVEY LINDSAY
COMMERCIAL REAL ESTATE

For more information:

RYAN KING | 757.640.8210 | RyanKing@HarveyLindsay.com

PETER D. ABRAHAM, CCIM | 757.640.8226 | PeterAbraham@HarveyLindsay.com

JONATHAN LEVIN | 757.647.8530 | JonathanLevin@HarveyLindsay.com