



4895 Dressler Rd NW
Canton, Ohio 44718

AVAILABLE SQ FT	3,920
LEASE RATE	\$12.50/SF/NNN
ZONING	B3
YEAR BUILT	1984-2003
ACRES	2.25
FRONTAGE	345' (Dressler Rd)

UNIT	SQ FT	SF RATE	NNN	Monthly
B	3,920	\$12.50	\$3.24	\$5,141.73



Property Features

- 3,920/SF unit for sub-lease.
- Prime location directly in the center of Belden Village area.
- Tons of windows and natural light
- Former Kenan Advantage Corporate Office.

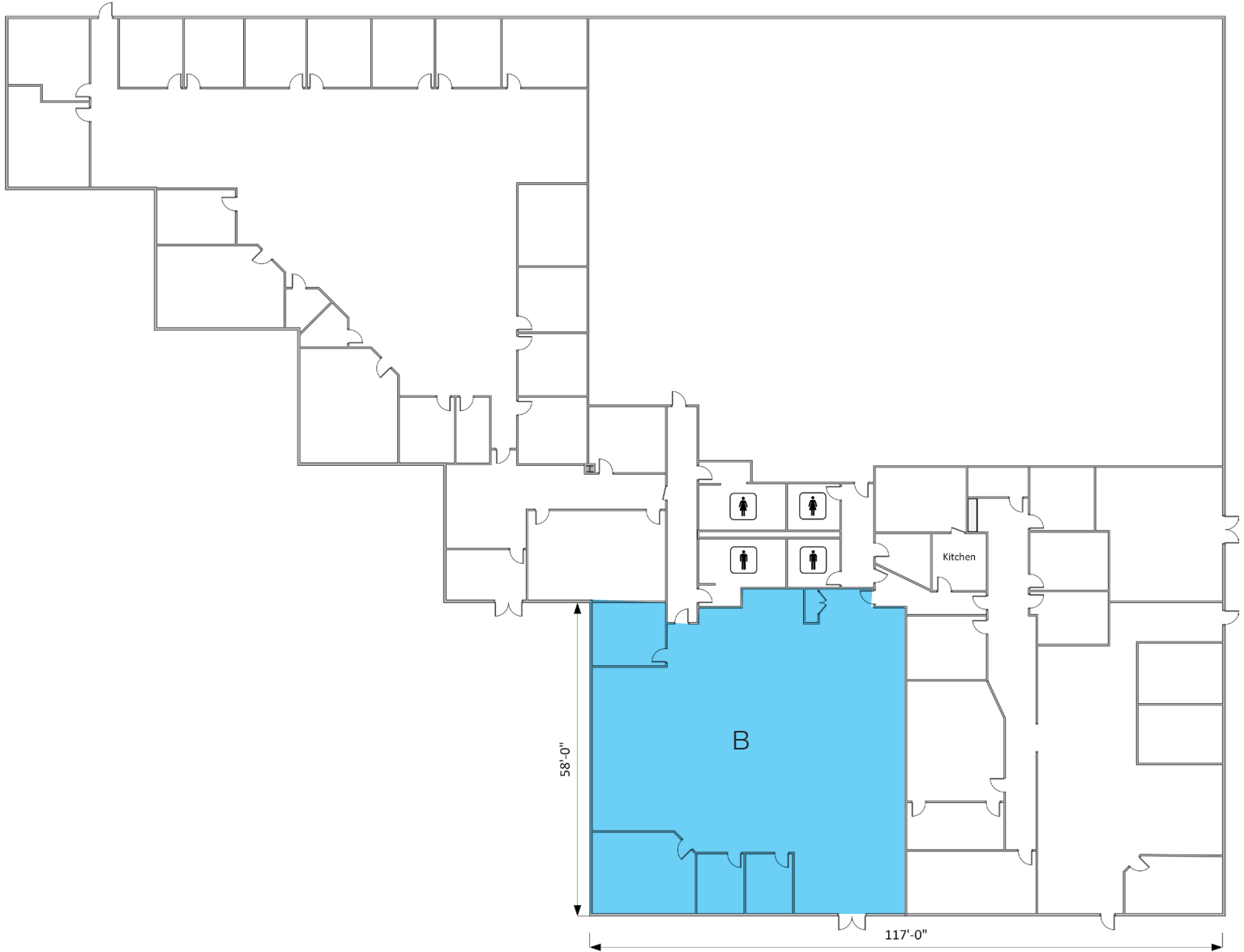
Sean Sanford

P 330 284 0331
sean@naispring.com

Jared Sanford

P 330 354 3466
jared@naispring.com

4895 Dressler Rd NW
Canton, Ohio 44718

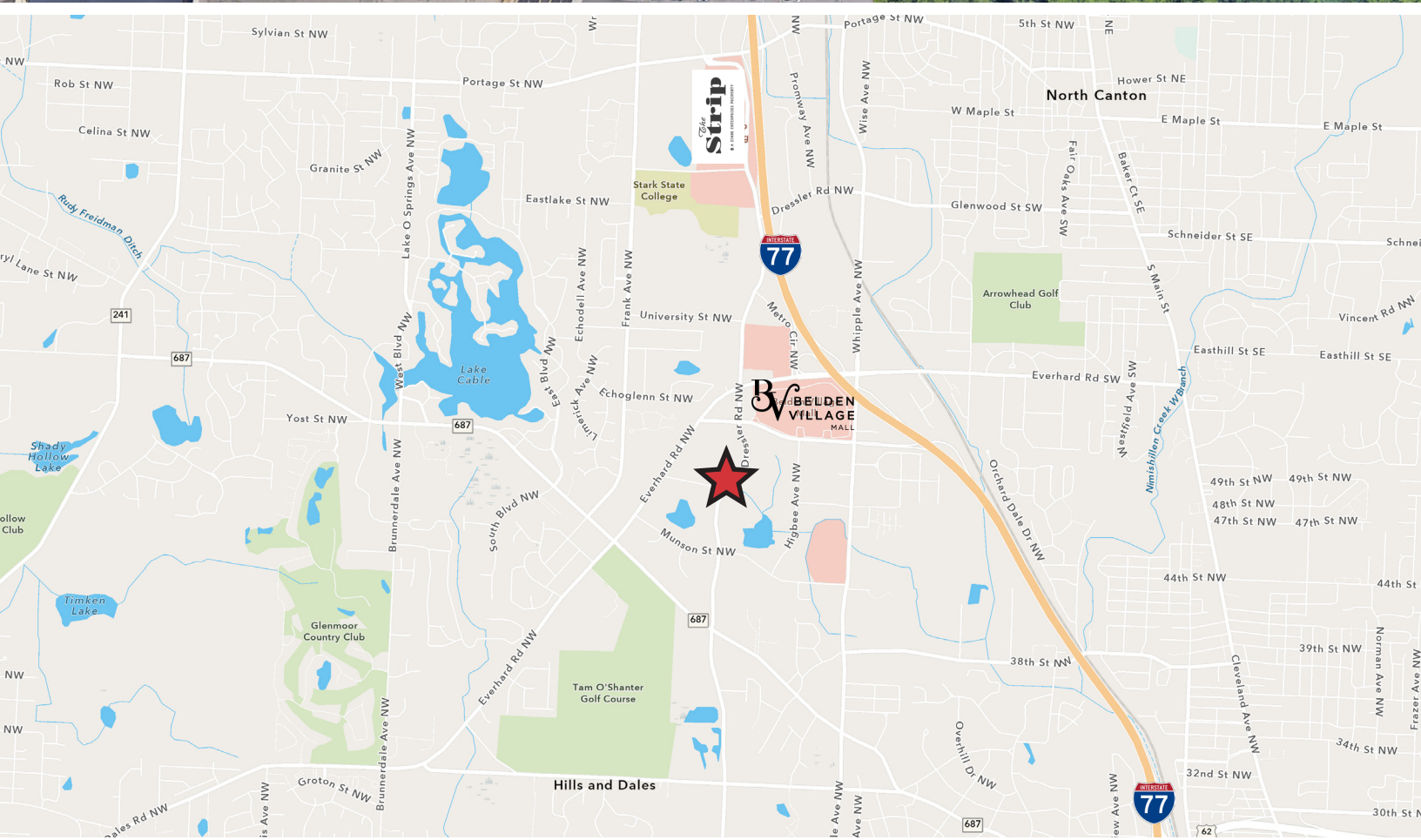


*DIMENSIONS ARE APPROXIMATE. THIS INFORMATION IS FROM RELIABLE SOURCES BUT IS NOT GUARANTEED AND IS SUBJECT TO CHANGE

NO WARRANTY OR REPRESENTATION, EXPRESS OR IMPLIED, IS MADE AS TO THE ACCURACY OF THE INFORMATION CONTAINED HEREIN, AND THE SAME IS SUBMITTED SUBJECT TO ERRORS, OMISSIONS, CHANGE OF PRICE, RENTAL OR OTHER CONDITIONS, PRIOR SALE, LEASE OR FINANCING, OR WITHDRAWAL WITHOUT NOTICE, AND OF ANY SPECIAL LISTING CONDITIONS IMPOSED BY OUR PRINCIPALS NO WARRANTIES OR REPRESENTATIONS ARE MADE AS TO THE CONDITION OF THE PROPERTY OR ANY HAZARDS CONTAINED THEREIN ARE ANY TO BE IMPLIED.

8234 Pittsburg Ave NW
North Canton, OH 44720
+1 330 966 8800
naispring.com

4895 Dressler Rd NW
Canton, Ohio 44718



NO WARRANTY OR REPRESENTATION, EXPRESS OR IMPLIED, IS MADE AS TO THE ACCURACY OF THE INFORMATION CONTAINED HEREIN, AND THE SAME IS SUBMITTED SUBJECT TO ERRORS, OMISSIONS, CHANGE OF PRICE, RENTAL OR OTHER CONDITIONS, PRIOR SALE, LEASE OR FINANCING, OR WITHDRAWAL WITHOUT NOTICE, AND OF ANY SPECIAL LISTING CONDITIONS IMPOSED BY OUR PRINCIPALS NO WARRANTIES OR REPRESENTATIONS ARE MADE AS TO THE CONDITION OF THE PROPERTY OR ANY HAZARDS CONTAINED THEREIN ARE ANY TO BE IMPLIED.

8234 Pittsburg Ave NW
North Canton, OH 44720
+1 330 966 8800
naispring.com