

# 7555 CHOCTAW RD

BRUSLY, LOUISIANA

## FOR SALE OR LEASE

84 ACRES | ±211,648 SF  
INDUSTRIAL WAREHOUSE  
DEVELOPMENT ON  
INTRACOASTAL WATERWAY

WATCH VIDEO

FOR SALE- \$14,500,000

FOR LEASE

BUILDING - \$6.00/SF/YR NNN

LAND - \$1,000/AC/MO NNN

[AS-IS]

CHOCTAW RD

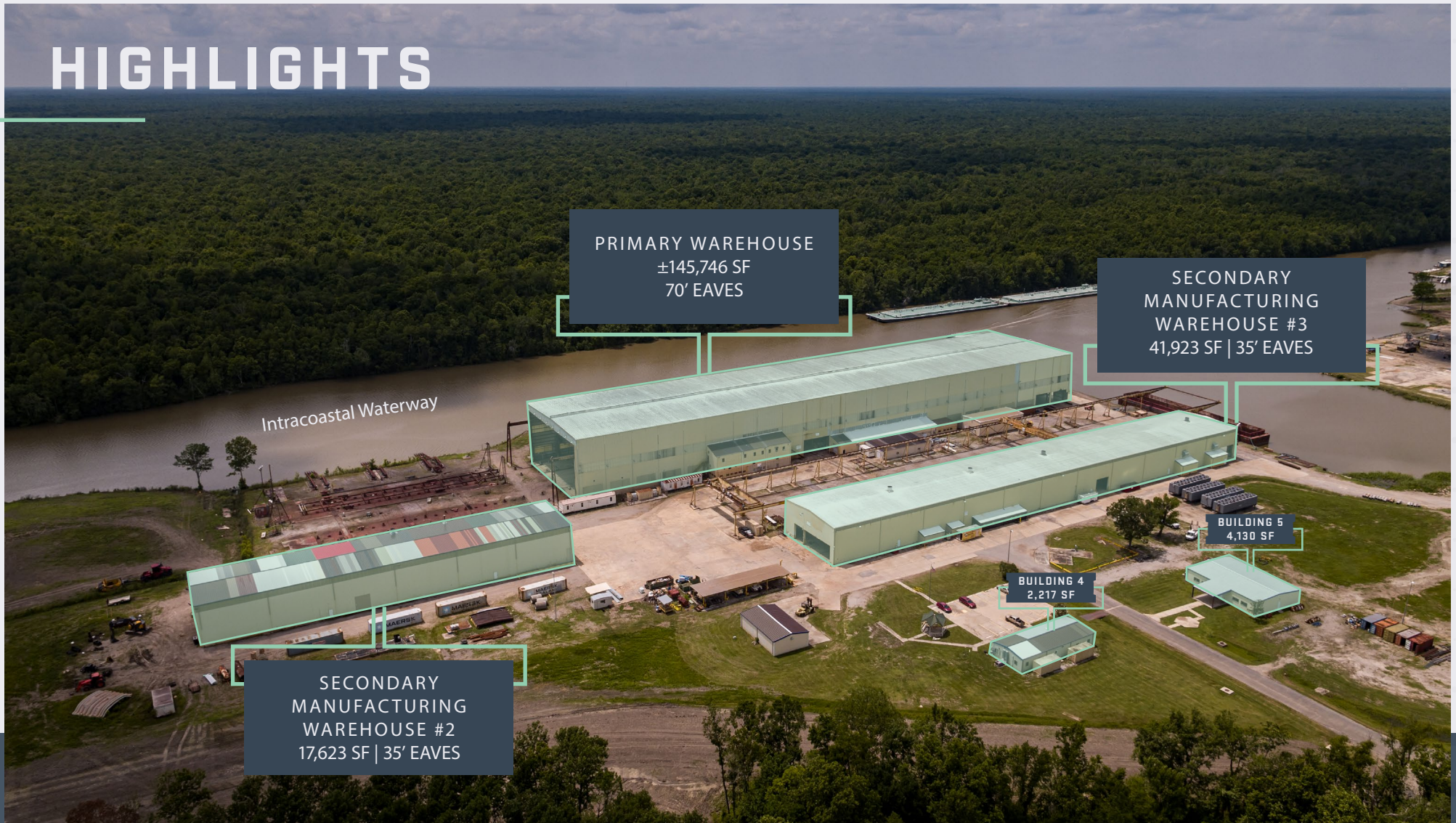
PORT ALLEN LOCK

INTRACOASTAL WATERWAY

BRYCE FRENCH | Senior Vice President | +1 504 427 2090 | [bryce.french@cbre.com](mailto:bryce.french@cbre.com)

**CBRE**

# HIGHLIGHTS



## HIGHLIGHTS



### Barge Access

2,550 LF of bulkhead with barge access



### Manufacturing

±145,746 of heavy manufacturing space with 40' to 70' eaves and 100' deep pylons in primary warehouse plus additional ±59,546 SF manufacturing space in buildings 2 & 3



### Site Improvements

250,000 SF of stabilized aggregate and 150,000 SF of concrete for parking and storage



### Crane Served

Cantilevered overhead rail system with 20 cranes (1, 5, 10, 20 and 50 ton cranes)



## PROPERTY OVERVIEW

### Heavily Crane Served 84-Acre Industrial Development

7555 Choctaw Road is an 84-acre industrial development located in Brusly, Louisiana along the gulf intracoastal waterway. The Property consists of ±211,648 SF of industrial manufacturing warehouse space spanning across 5 buildings ranging in various sizes. The site is improved with approximately 250,000 SF of stabilized aggregate and 150,000 SF of concrete paving for parking and material storage as well as waterfront improvements totaling 2,550 liner feet of bulkhead varying in construction from rip rap to sheet metal and concrete.

The property is heavily crane served with cranes ranging from 1-ton to 50-ton. The building has its own 7.5 megawatt electrical substation with 13,800 primary underground to 480 volt distribution.



**7.5 MEGAWATT  
ELECTRICAL SUBSTATION  
WITH 13,800 PRIMARY  
UNDERGROUND TO 480  
VOLT DISTRIBUTION**

# BUILDING SPECIFICATIONS

## Property Highlights

- + 85 acres of land
- + 2,500 LF of water frontage
- + Office: ±8,678 SF
- + Additional laydown yard capabilities
- + Operating shipyard with barge access
- + Cantilvered overhead rail system with 20 cranes

### PRIMARY WAREHOUSE 1

±145,746 SF Heavy Manufacturing Space

40' to 70' Eave Heights

100' Deep Pylons

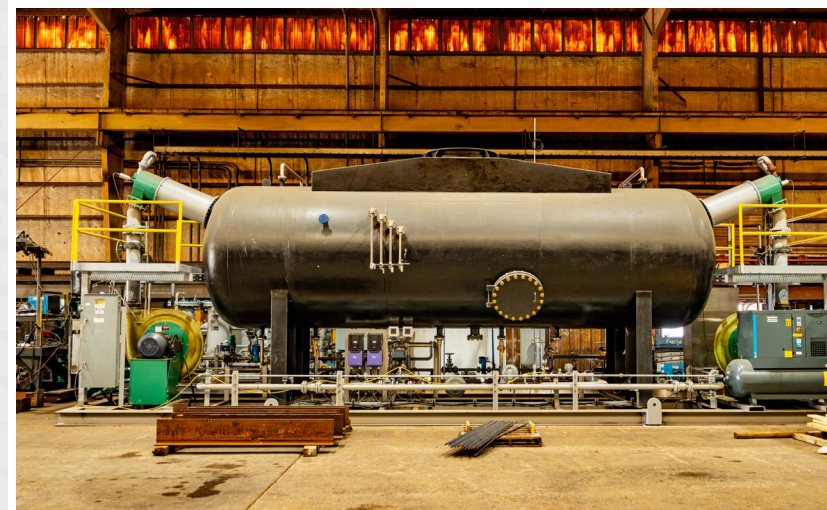
Craneways Multiple Bridge/Overhead Cranes

### SECONDARY MANUFACTURING WAREHOUSES 2 & 3

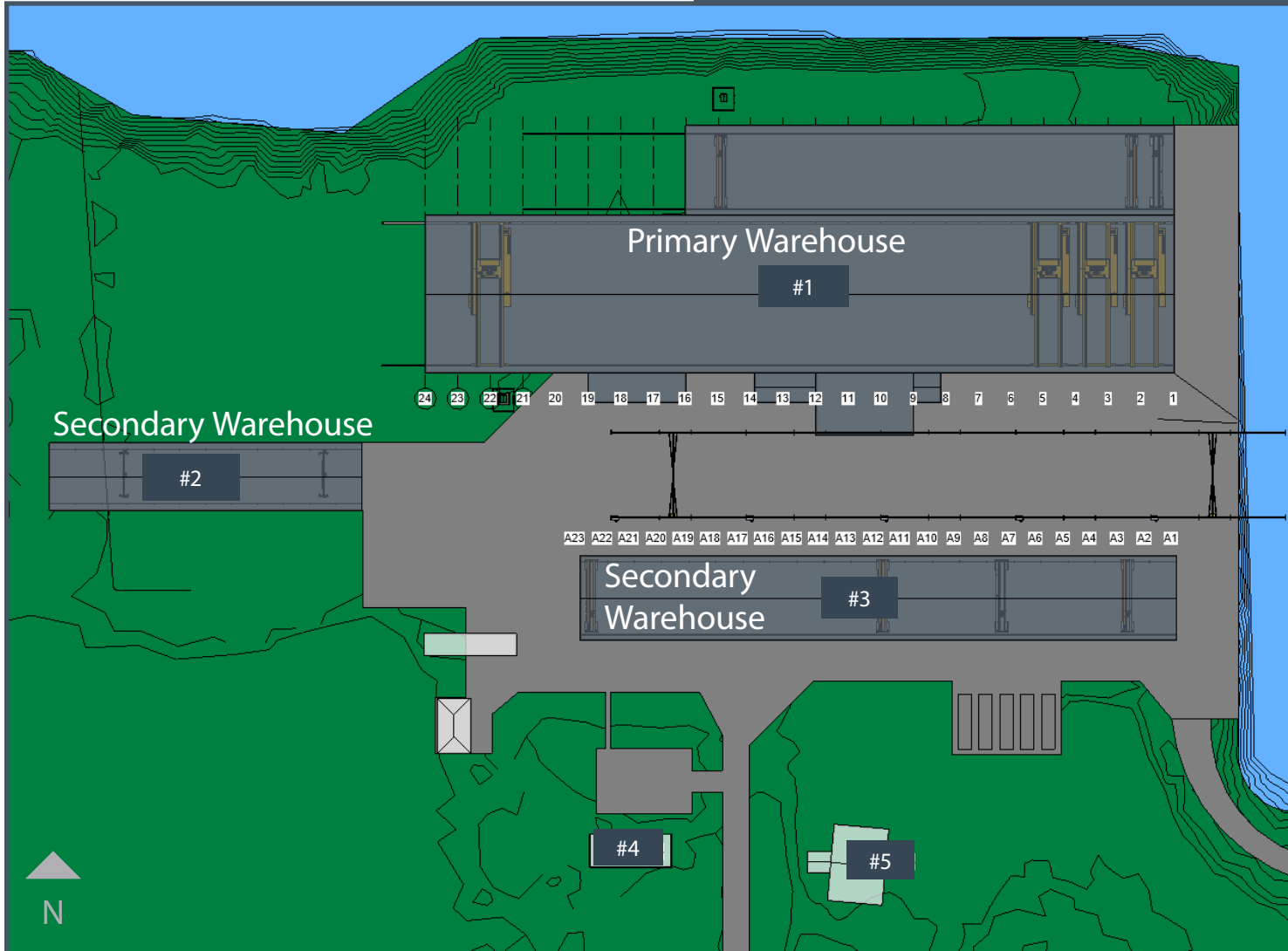
±59,546 Manufacturing Space

35' Eave Heights

Craneways Multiple Bridge/Overhead Cranes



# SITE PLAN



Primary Warehouse  
±145,746 SF

Secondary Warehouse 2  
±17,623 SF

Secondary Warehouse 3  
±41,923 SF

Building 4  
±2,217 SF

Building 5  
±4,130 SF

# AERIAL



PORT ALLEN LOCK

LAYDOWN YARD /  
STORAGE LAND

±41.5 ACRES

\$1,000/AC/MO NNN

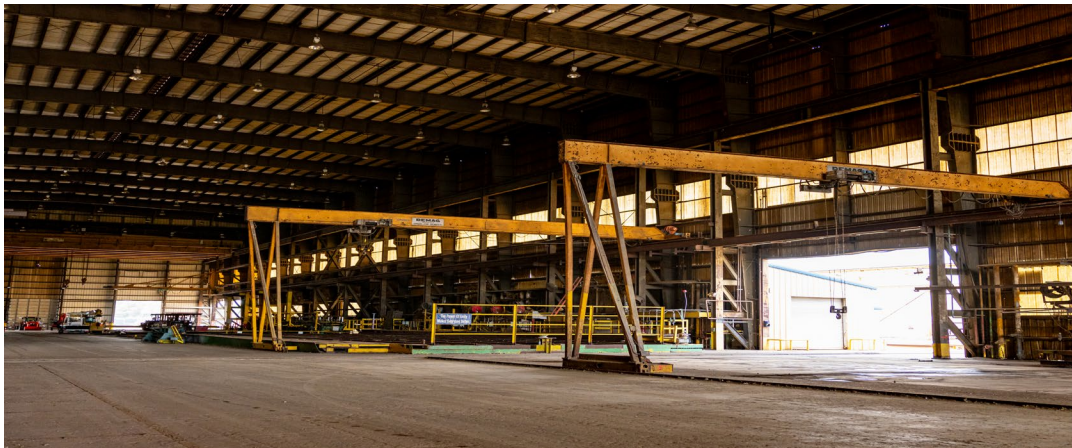
CHOCTAW RD

INTRACASTAL WATERWAY

N



# GALLERY







FOR SALE/ LEASE

WATCH VIDEO

7555  
CHOCTAW  
RD

84 ACRES | ±211,648 SF  
INDUSTRIAL DEVELOPMENT  
ON INTRACOASTAL  
WATERWAY

**BRYCE FRENCH**

Senior Vice President

+1 504 427 2090

bryce.french@cbre.com

**CBRE**

© 2023 CBRE, Inc. All rights reserved. This information has been obtained from sources believed reliable but has not been verified for accuracy or completeness. CBRE, Inc. makes no guarantee, representation or warranty and accepts no responsibility or liability as to the accuracy, completeness, or reliability of the information contained herein. You should conduct a careful, independent investigation of the property and verify all information. Any reliance on this information is solely at your own risk. CBRE and the CBRE logo are service marks of CBRE, Inc. All other marks displayed on this document are the property of their respective owners, and the use of such marks does not imply any affiliation with or endorsement of CBRE. Photos herein are the property of their respective owners. Use of these images without the express written consent of the owner is prohibited.