



**370 GREAT
SOUTHWEST
PARKWAY, SUITE J**
ATLANTA, GA 30336

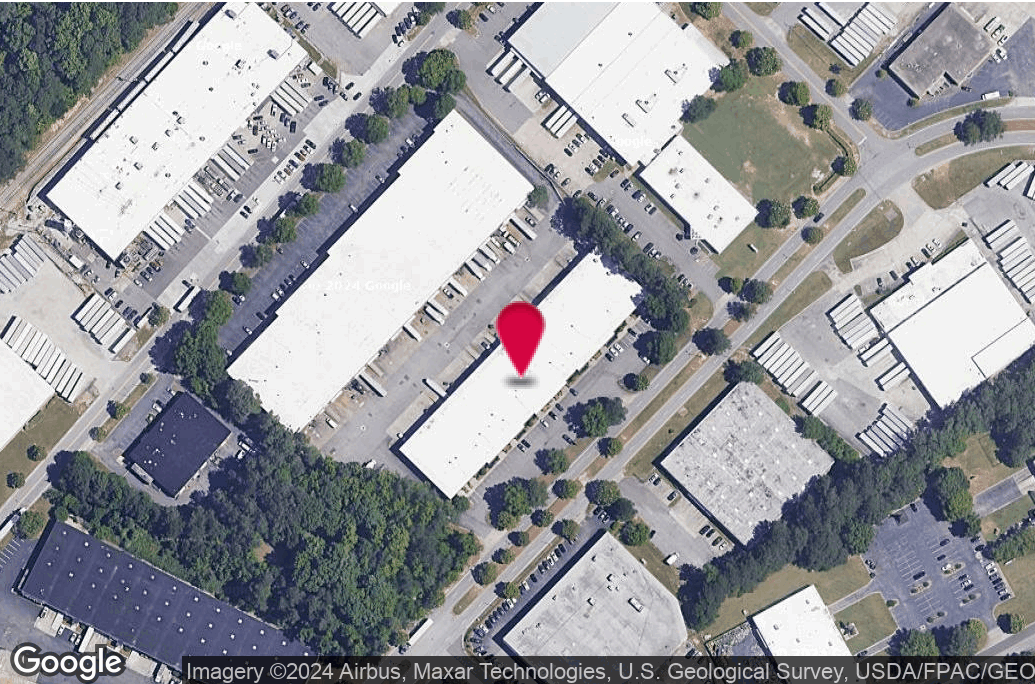
For Lease
9,988 +/- SF
Office / Warehouse Space

WILSON COVINGTON, SIOR
Senior Vice President
404.942.2073
wcovington@kingindustrial.com

King *Industrial
Realty, Inc.*

Industrial • Commercial • Investment
404.942.2000 | kingindustrial.com

FOR LEASE
9,988 +/- SF
OFFICE / WAREHOUSE
SPACE



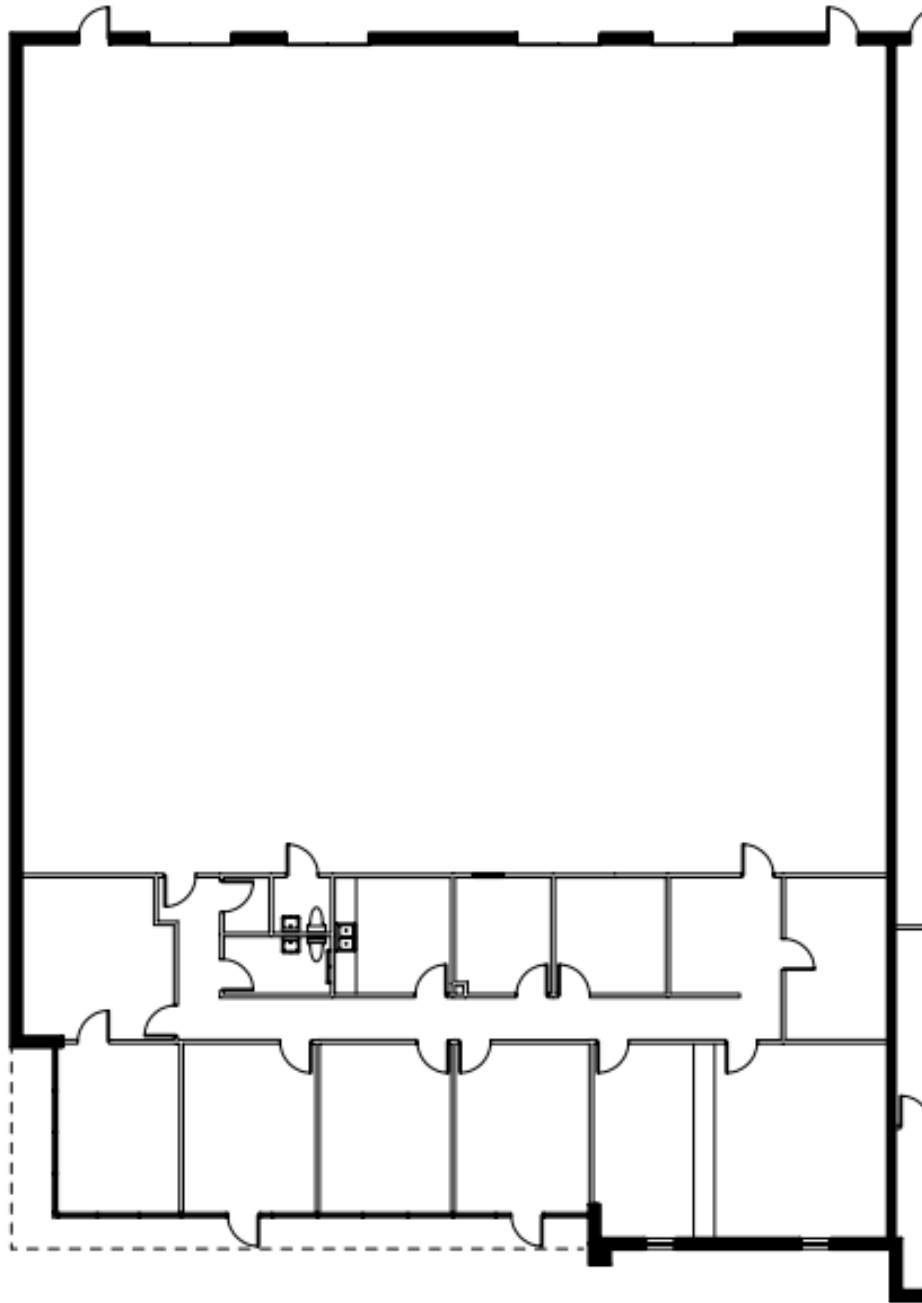
PROPERTY HIGHLIGHTS

- 2,750 +/- SF Office
- 4 Dock Doors
- 20' Clear Height
- Rear Load Trucking
- LED Warehouse Lights
- Ample Car Parking

OFFERING SUMMARY

Available SF:	9,988 SF
Lot Size:	4.03 Acres
Building Size:	55,303 SF
Zoning:	M1A

FLOOR PLAN



Industrial • Commercial • Investment
404.942.2000 | kingindustrial.com

WILSON COVINGTON, SIOR

Senior Vice President

404.942.2073

wcovington@kingindustrial.com

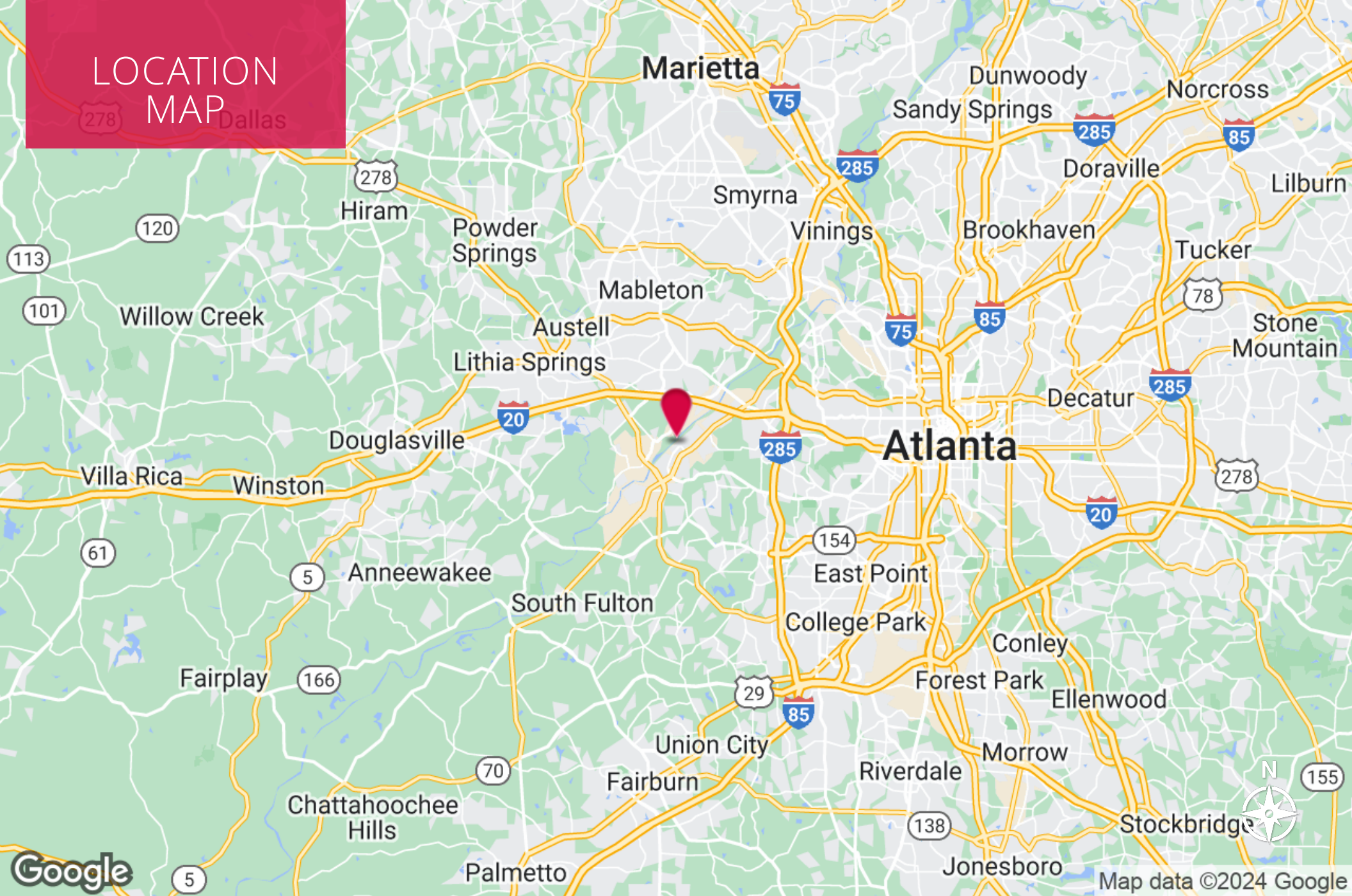
Owned & Managed By:



Every effort has been made to provide accurate information, but no liability is assumed for errors or omissions.

LOCATION MAP

278 Dallas



Google

Map data ©2024 Google

king Industrial Realty, Inc. **CORFAC** INTERNATIONAL
Industrial • Commercial • Investment
404.942.2000 | kingindustrial.com

WILSON COVINGTON, SIOR
Senior Vice President
404.942.2073
wcovington@kingindustrial.com

Owned & Managed By:
FIRST INDUSTRIAL REALTY TRUST

Every effort has been made to provide accurate information, but no liability is assumed for errors or omissions.

EXCLUSIVELY LISTED BY:

WILSON COVINGTON, SIOR

Senior Vice President

wcovington@kingindustrial.com

404.942.2073

King Industrial
Realty, Inc.

Industrial • Commercial • Investment
404.942.2000 | kingindustrial.com