



**FOR
LEASE**

1001 SE Sandy Blvd

PORTLAND, OR 97214



Creative Office

Stunning remodel of 1979 office building in the heart of the Central Eastside. Featuring a second floor of creative office space with great south-facing views, abundant natural light and creative office finishes. The building owner, Gnich Architecture, is a co-tenant of the building located in the large adjacent space.

DEMISABLE BY FLOOR

3,139 SF 2nd floor

AMPLE natural light

VIEW of downtown

BIKE parking

PARKING on site

GRANT GUERNSEY

503.721.2737

grant.guernsey@kidder.com

KIDDER.COM

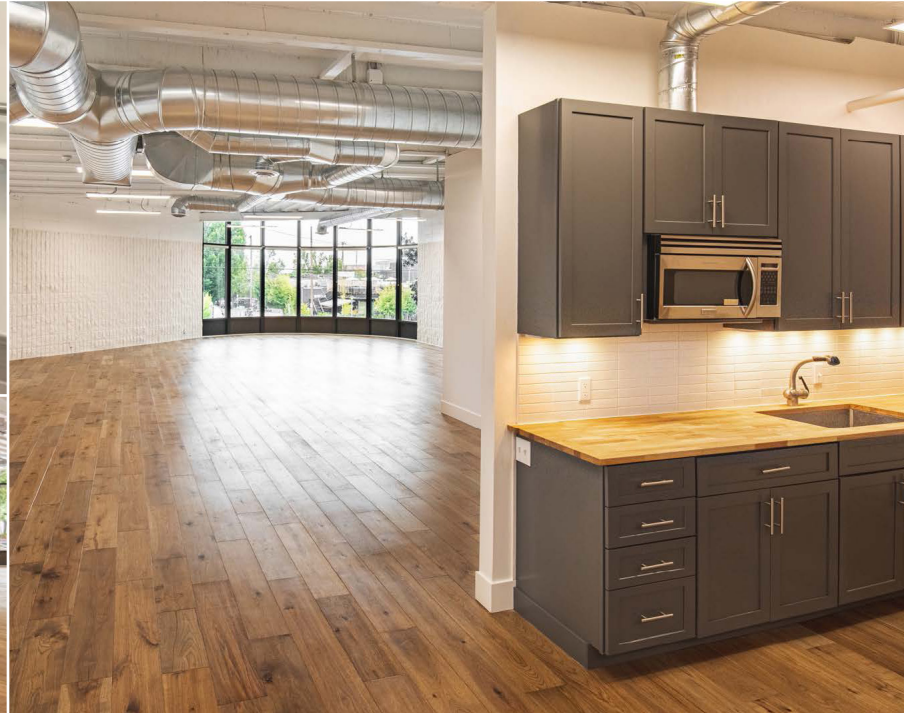
**Kidder
Mathews**

This information supplied herein is from sources we deem reliable. It is provided without any representation, warranty, or guarantee, expressed or implied as to its accuracy. Prospective Buyer or Tenant should conduct an independent investigation and verification of all matters deemed to be material, including, but not limited to, statements of income and expenses. Consult your attorney, accountant, or other professional advisor.

FOR LEASE

1001 SE Sandy Blvd

PORTLAND, OR 97214



GRANT GUERNSEY

503.721.2737

grant.guernsey@kidder.com

KIDDER.COM

This information supplied herein is from sources we deem reliable. It is provided without any representation, warranty, or guarantee, expressed or implied as to its accuracy. Prospective Buyer or Tenant should conduct an independent investigation and verification of all matters deemed to be material, including, but not limited to, statements of income and expenses. Consult your attorney, accountant, or other professional advisor.

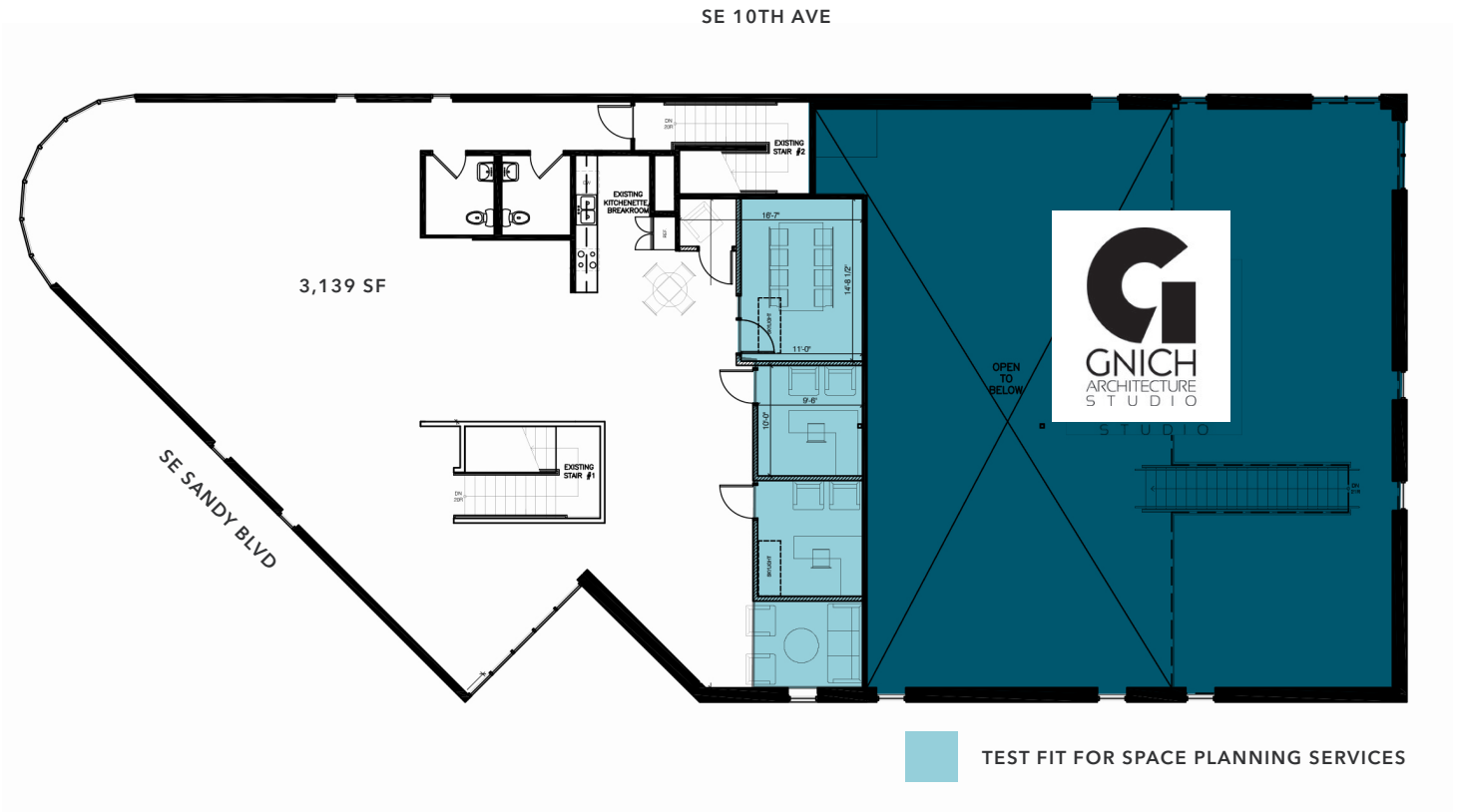


FOR LEASE

1001 SE Sandy Blvd

PORTLAND, OR 97214

Second Floor



3,139 RSF

CREATIVE office

PLENTIFUL natural light

VIEW of downtown

RESTROOMS in suite

KITCHENETTE & breakroom

CONFERENCE room

\$24/SF NNN (est. \$5)

GRANT GUERNSEY

503.721.2737

grant.guernsey@kidder.com

KIDDER.COM

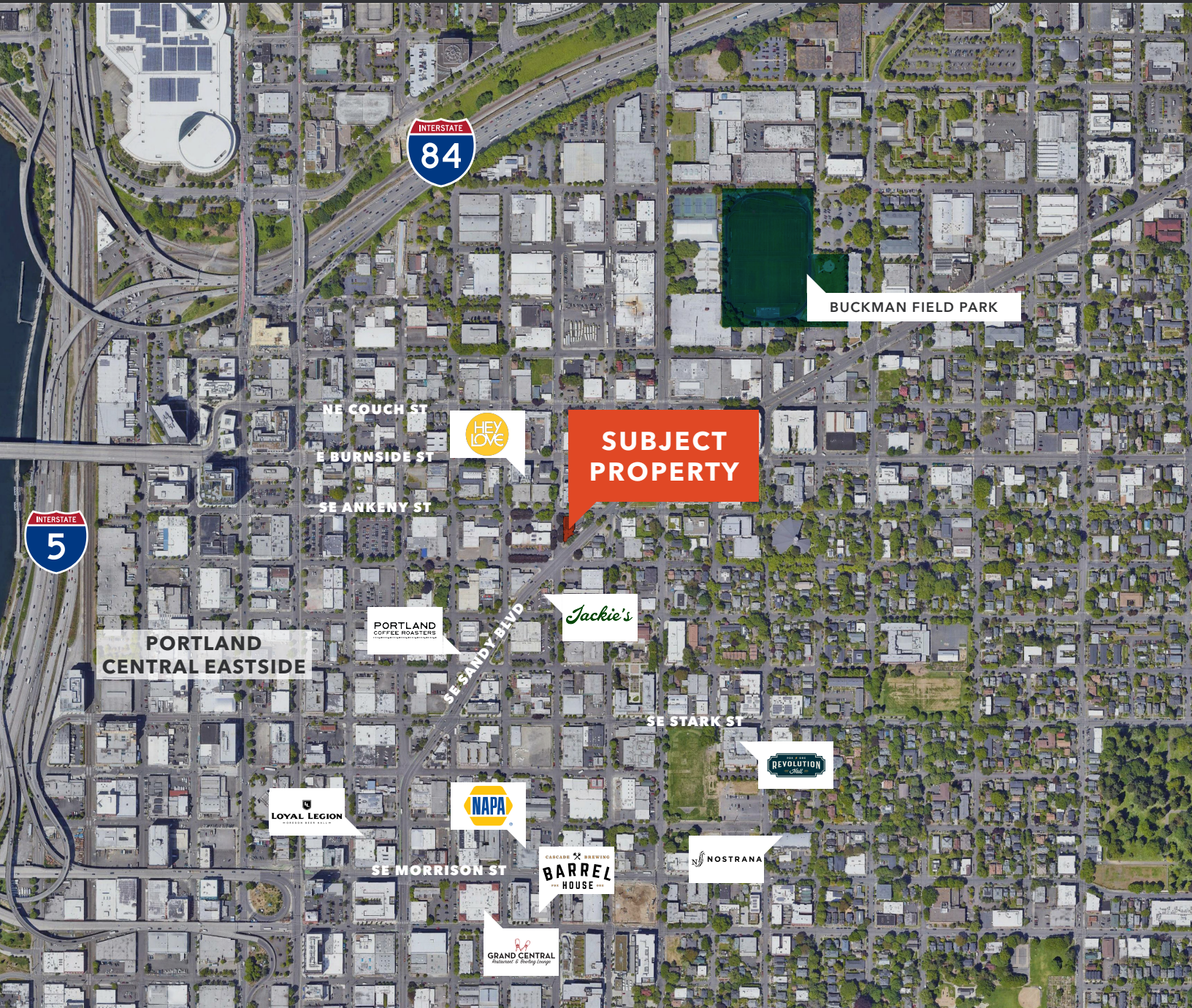
This information supplied herein is from sources we deem reliable. It is provided without any representation, warranty, or guarantee, expressed or implied as to its accuracy. Prospective Buyer or Tenant should conduct an independent investigation and verification of all matters deemed to be material, including, but not limited to, statements of income and expenses. Consult your attorney, accountant, or other professional advisor.

km Kidder Mathews

FOR LEASE

1001 SE Sandy Blvd

PORTLAND, OR 97214



GRANT GUERNSEY

503.721.2737

grant.guernsey@kidder.com

KIDDER.COM

This information supplied herein is from sources we deem reliable. It is provided without any representation, warranty, or guarantee, expressed or implied as to its accuracy. Prospective Buyer or Tenant should conduct an independent investigation and verification of all matters deemed to be material, including, but not limited to, statements of income and expenses. Consult your attorney, accountant, or other professional advisor.

km Kidder Mathews