

FOR LEASE

Office Space

4,649 - 8,072± SF



500 Southborough Drive, South Portland

Property Highlights

- *Class A office space*
- *Direct access to Maine Turnpike/I-95 & I-295*
- *Ample, on-site parking*

Property Description

We are pleased to offer up to 8,072± SF of Class A office space for lease at 500 Southborough Drive in South Portland, Maine. SouthBorough Office Park is one of Maine's premier office parks. All buildings provide modern brick and glass facades, first class interior finishes and beautifully maintained grounds. With recently renovated lobby entrances, landscaping and restrooms, the property offers a unique opportunity for first class space in an exceptional suburban campus environment. Located on the South Portland, Scarborough line with immediate access to 295, The Maine Turnpike Exit 44, The Maine Mall and The Jetport Area amenities include hotels, restaurants, shops, and a golf course.



Broker Contact

Jim Harnden | jim@dunhamgroup.com

Sam LeGeyt | sam@dunhamgroup.com

207.773.7100 | www.dunhamgroup.com





Property Overview

Owner	400 Southborough, LLC
Building Size	45,251± SF
Stories	Three (3)
Available Space	4,649 - 8,072± SF
Lease Term	Five (5) - Ten (10) years
Construction	Concrete, brick and glass
Parking	4.0/1,000 SF
Flooring	Carpet and tile
HVAC	Gas-fired, forced hot air duct. Central AC
Amenities	Cafe, on-site facilities management
Zoning	IL

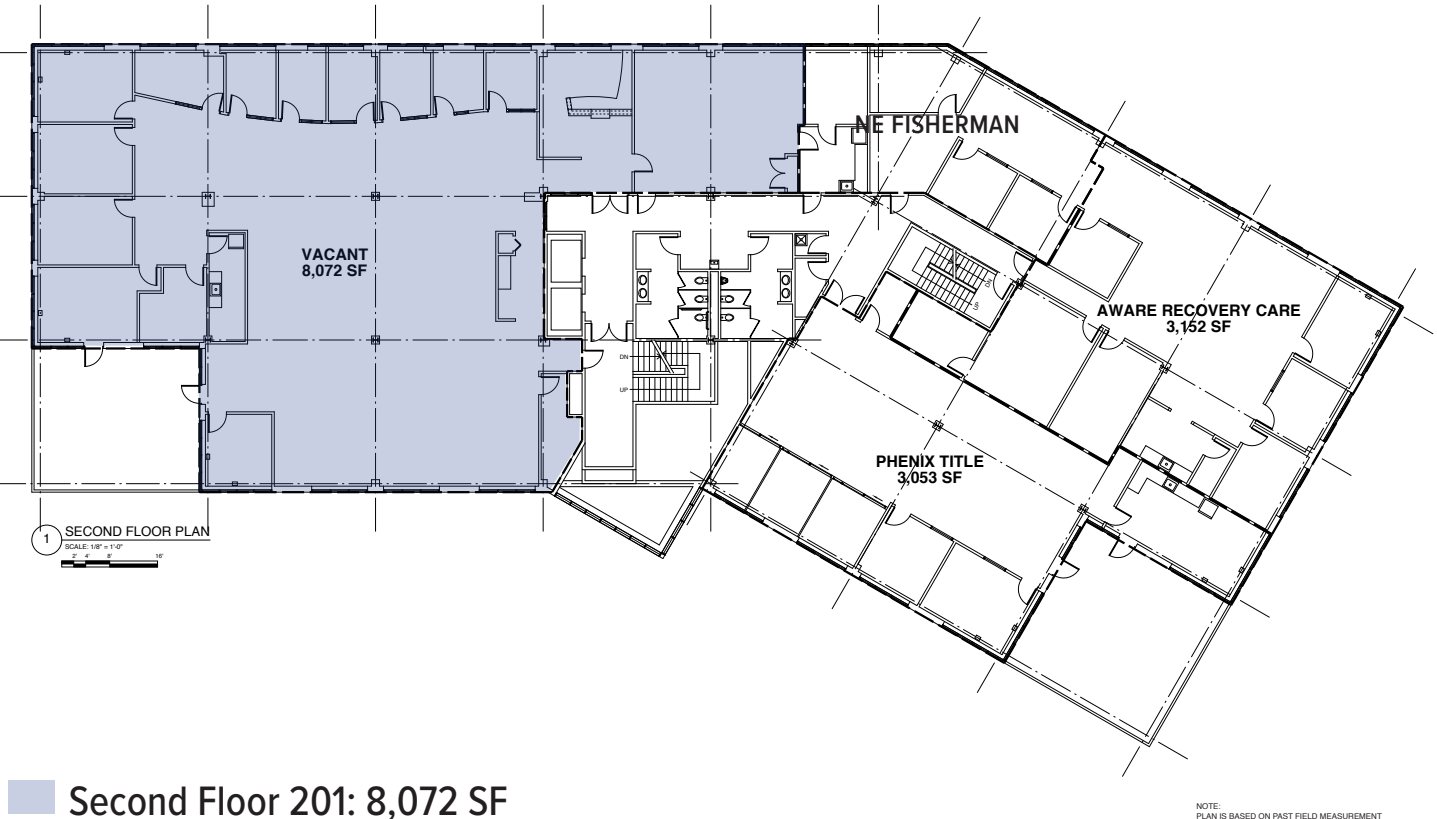
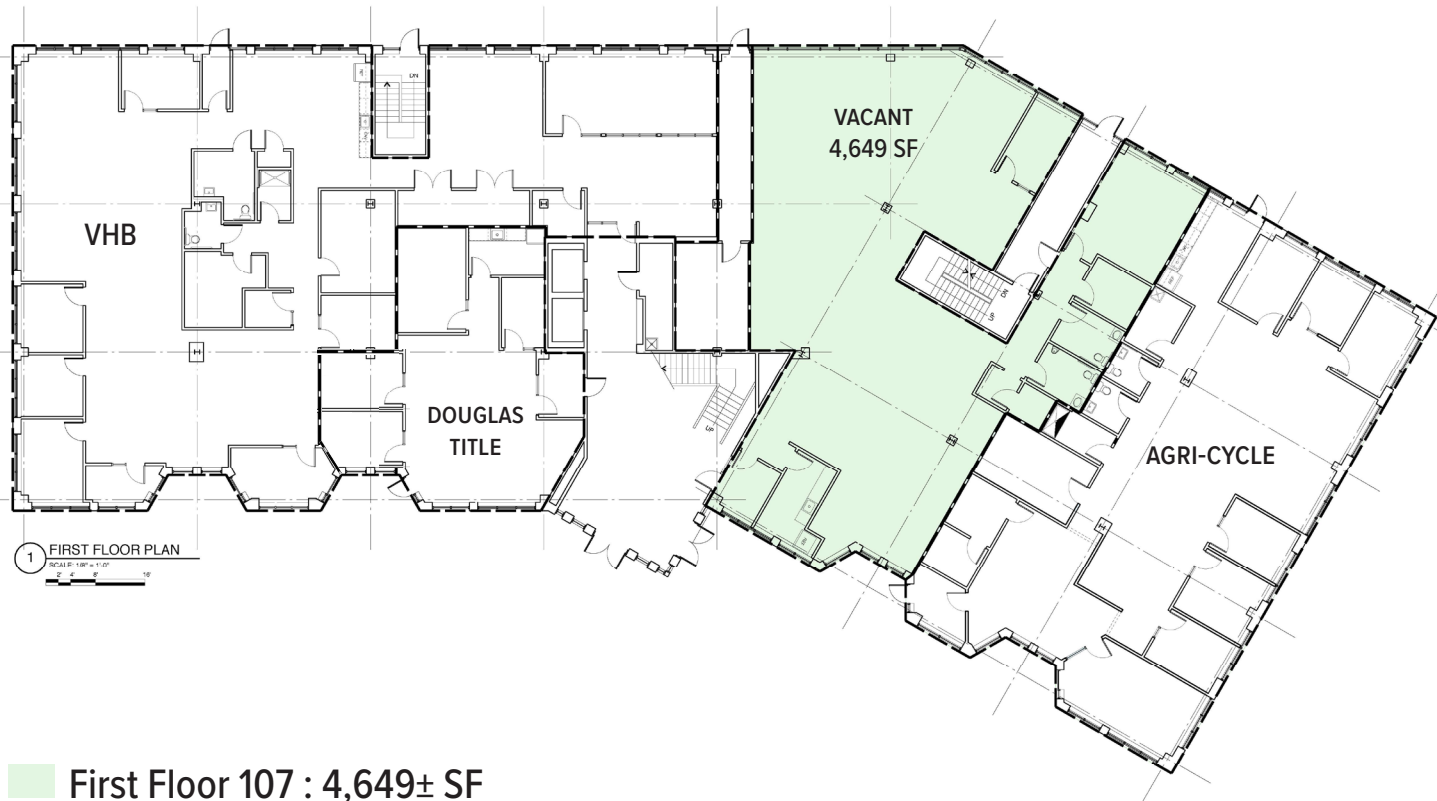
Available Space

Suite 107: 4,649 SF	Rents: \$15.00/SF NNN	Available: Vacant
Suite 201: 8,072 SF	Rents: \$15.00/SF NNN	Available: Vacant

FOR LEASE : \$15.00/SF NNN - Est. NNN : \$8.89/SF
(includes HVAC - tenant pays electrical and janitorial)

500 Southborough Drive







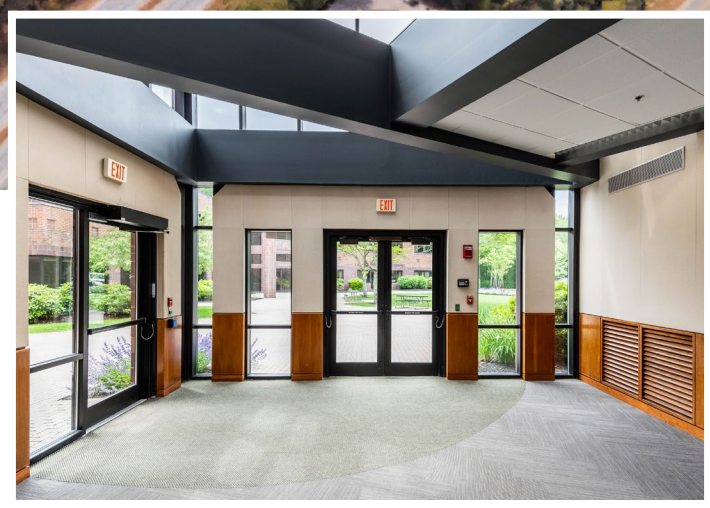
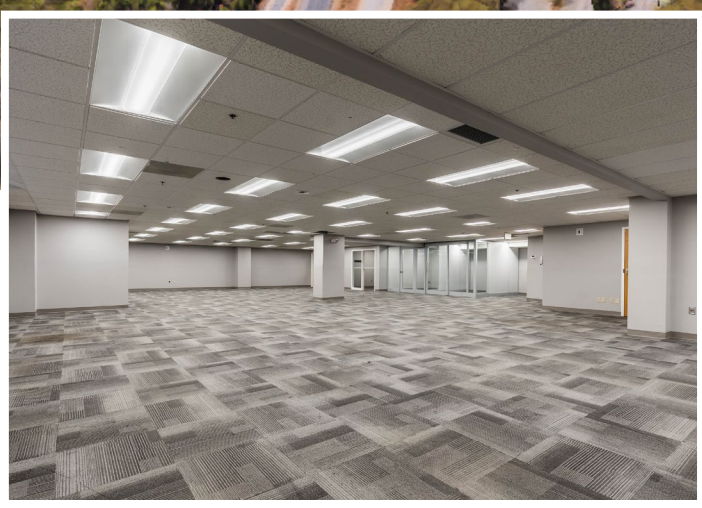
MAINE MALL

SOUTHBOROUGH OFFICE PARK



I-295 CONNECTOR

MAINE TURNPIKE



The information contained herein has been given to us by the owner of the property or other sources we deem reliable. We have no reason to doubt its accuracy, but we do not guarantee it. All information should be verified prior to purchase or lease.