

Westridge Market

OWNED BY:



LEASED BY:

CBRE



11210 - 11544
Wayzata Boulevard,
Minnetonka, MN

Features



GLA: 260,000 SF



Established regional shopping center in Minnetonka's Ridgedale trade area (approx. 1 mile from Ridgedale Mall)



Located at the highly trafficked intersection of I-394 and Hopkins Crossroad



Strong national anchors with a great mix of national, regional, and local small shop tenants



Highly visible with prominent building signage



Rare 100,000 SF endcap opportunity

Available Space

101,216 Square Feet

34,124 Square Feet

CO-TENANTS

TRADER JOE'S

Michaels

BARNES & NOBLE
BOOKSELLERS

LANDS' END

spavia

Hirshfield's

Olive Garden

BLVD
KITCHEN

Fidelity
INVESTMENTS

PACIFIC
DENTAL SERVICES*

Great Clips

BLACKWATER
COFFEE & CAFE



Trade Area Demographics

	1 Mile	3 Mile	5 Mile
POPULATION*	7,247	62,396	203,718
DAYTIME POPULATION	12,487	98,103	273,258
HOUSEHOLDS*	3,673	28,126	92,438
AVERAGE HOUSEHOLD INCOME	\$130,964	\$140,437	\$142,660

* Current Year Estimate



WHOLE FOODS **HOBBY LOBBY** **Total Wine & MORE** **TACO BELL**
Office DEPOT **OfficeMax** **Haskell's** **Wendy's**
MEN'S WEARHOUSE **ERIKS** **PURE HOCKEY** **PIA TOUR SUPERSTORE**
CLOTHES MENTOR **Once upon a child** **STARBUCKS**
SL SALON LOFTS **MAZDA** **Ford** **SUBARU**

Cub **SHERWIN WILLIAMS** **Bachman's** **Arjo**

MENARDS **RAMADA** **PENTAIR** **BENIHANA** **Allianz**

Westridge Market
TRADER JOE'S **Michaels** **BARNES & NOBLE BOOKSELLERS**
spavio **LANDS' END** **Great Clips** **Hirshfeld's**
BLVD KITCHEN **Fidelity** **PACIFIC CAPITAL ADVISORS** **BLACKWATER**

Cub **Costco** **PETSMART** **Office DEPOT** **OfficeMax** **FedEx** **LIFETIME** **AT&T** **MATTRESS FIRM**
verizon **FRIDAYS** **EVEREVE ANTHROPOLOGIE** **Orangetheory**
FANTASTIC SAM'S **[solidcore]** **HANDY STONE** **SURGE CYCLING**
Arjo **Panera** **LIFE TIME WORK** **Associated Bank**
ICON **PUNCH BOWL SOCIAL** **loop** **Rojo** **GRAVE**
Yard House **Lakeshore** **roTi** **HOMWOOD SUITES** **DOUBLE TREE** **AC HOTELS**

Target **LeB** **BEST BUY** **petco** **NORDSTROM** **POTTERY BARN** **GAP** **Marshall's** **JCPenney** **AT&T**
ULTA **slumberland** **GameStop** **repower** **EXPRESS** **JOANN** **MAC**
verizon **TE Mobile** **VICTORIA'S SECRET** **francesca's** **PLATES** **xfinity**
WELLS FARGO **usbank** **Original** **Panera** **Firestone** **SHERATON** **BREADSMITH** **WellHaven** **Cheesecake Factory** **SUBWAY**
BIG BOWL **KONA GRILL** **Jamba** **Bacio** **eat-drink** **ZUPAS** **RED STONE**

Target **ALDI** **Cub** **W** **DOLLAR TREE** **five BE'W** **KOHL'S** **J.CREW** **ULTA** **DSW** **rack** **AT&T** **SALLY** **OLD NAVY** **Great Clips** **TACO BELL** **WELLS FARGO** **Huntington** **BREMER BANK** **HomeGoods** **Mister** **Firestone** **home** **choice** **Chick-fil-A** **PAPA MURPHY'S** **Smash Burger** **Applebee's** **Panera** **Jason MERRA** **BURGER KING** **White Castle** **LEEANN CHIN** **YB** **FIVE GUYS** **ILATI PIZZA**

Area Amenity Map

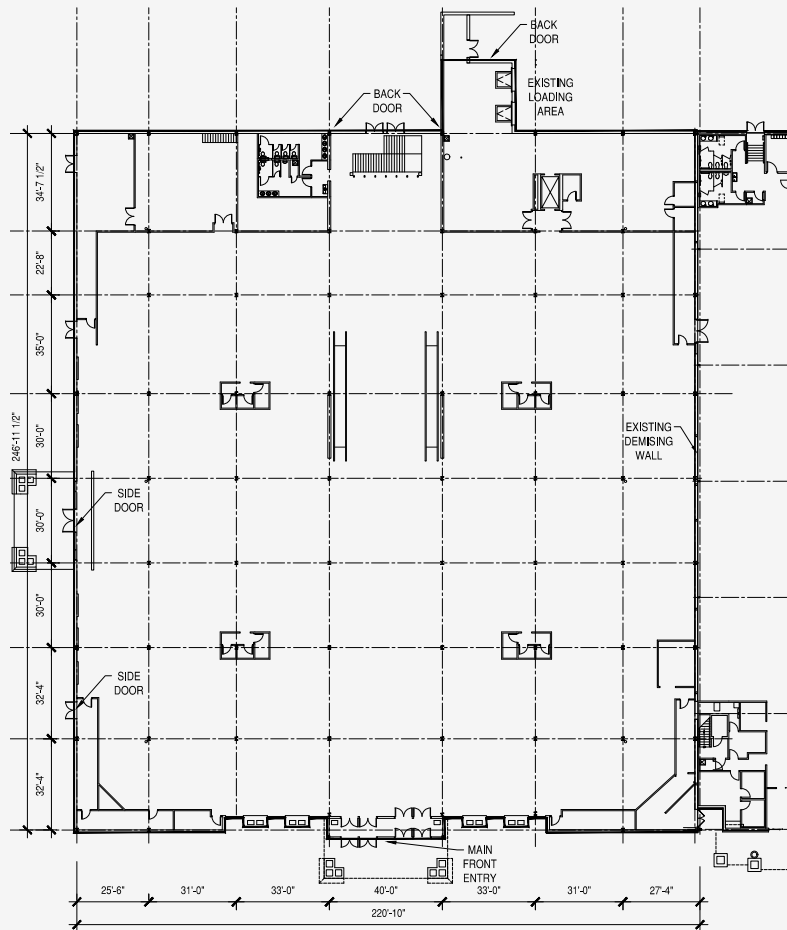
Site Plan



Space Plans

UNIT 11260 A - MAIN FLOOR

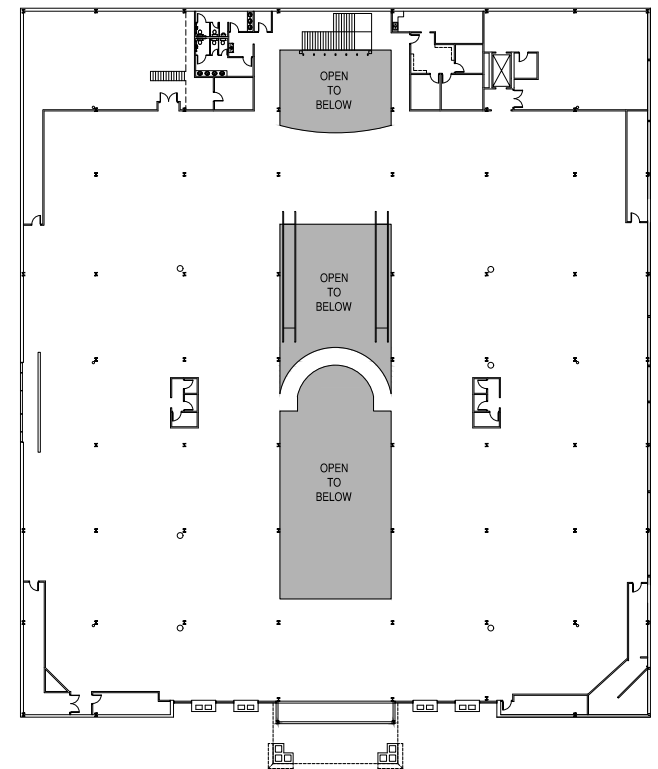
101,216 SF



- **Frontage:** 220' 10"
- **Clear Height (2nd Floor):** 17'10" – 18'66"
- Ability to demise (20,000 - 101,216 SF available)

UNIT 11260 A - SECOND FLOOR

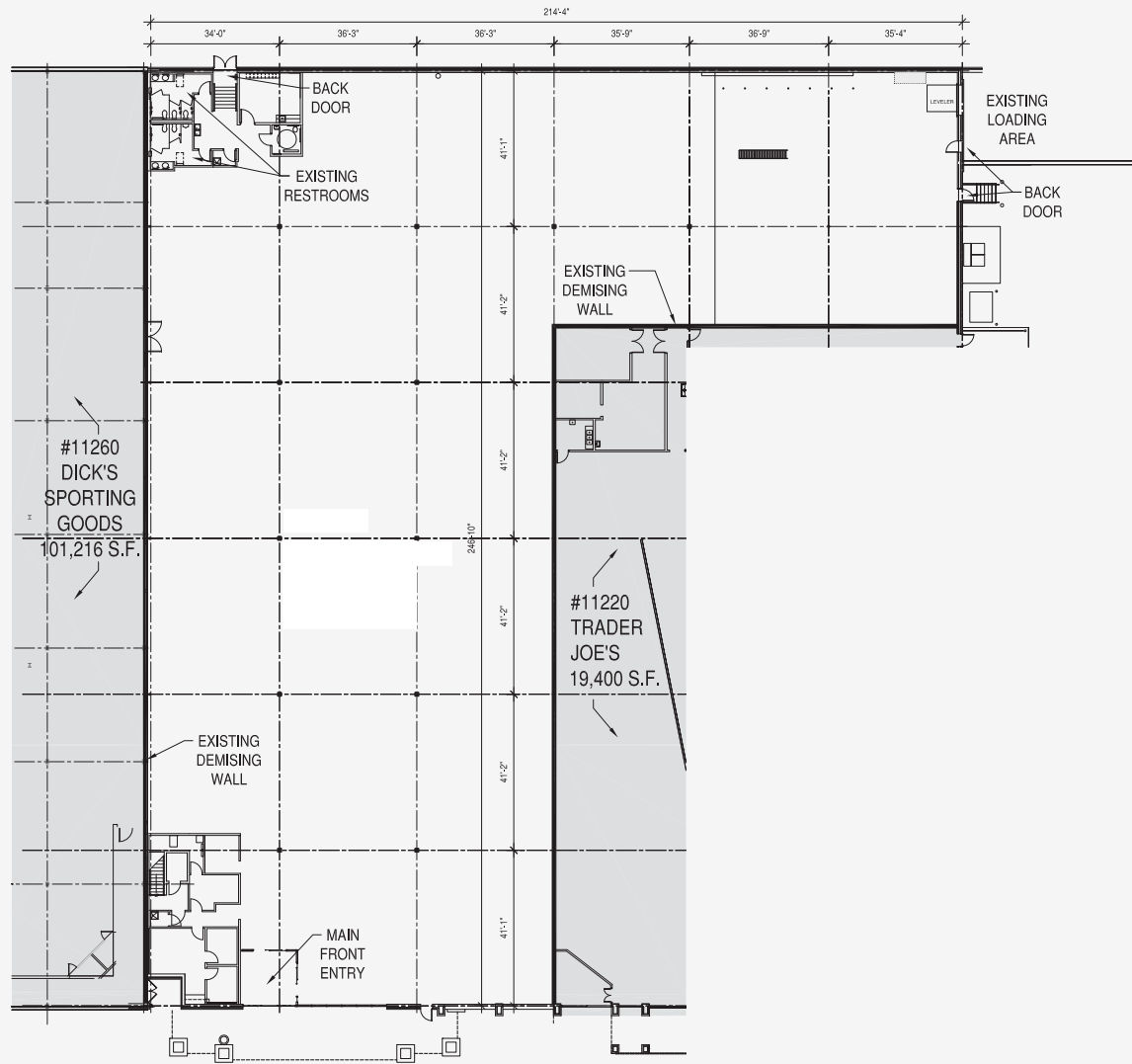
101,216 SF



Space Plans

UNIT 11240A

34,124 SF



- Frontage: 106' 6"



For More Information Please Contact

Rob Wise

Senior Vice President
+1 612 336 4274
rob.wise@cbre.com

Charlie Hexum

First Vice President
+1 612 336 4275
charlie.hexum@cbre.com

©2024 CBRE, Inc. All rights reserved. This information has been obtained from sources believed reliable, but has not been verified for accuracy or completeness. You should conduct a careful, independent investigation of the property and verify all information. Any reliance on this information is solely at your own risk. CBRE and the CBRE logo are service marks of CBRE, Inc. All other marks displayed on this document are the property of their respective owners, and the use of such logos does not imply any affiliation with or endorsement of CBRE. Photos herein are the property of their respective owners. Use of these images without the express written consent of the owner is prohibited. PMStudio_January2024

Westridge Market

OWNED BY:



LEASED BY:

