

# New York Avenue

601 N. New York Avenue  
Winter Park, FL 32789  
Lat 28.602, Long -81.353

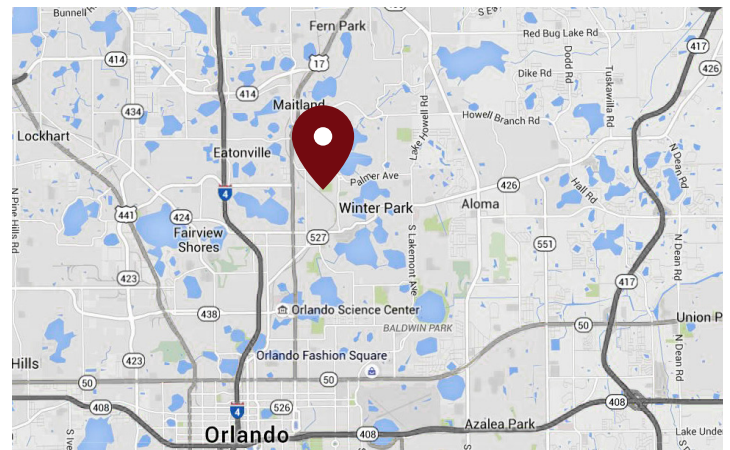
FOR LEASE



170 - 578 SF AVAILABLE

## PROPERTY HIGHLIGHTS

- Winter Park Office Space
- Common Areas Include Separate Men and Womens Restrooms, Access to Large Conference Room
- Available Space includes 2 Garage Parking Spots + 1 Additional Parking Space



DEMOGRAPHICS	1 Mile	3 Miles	5 Miles
Total Population	8,811	97,037	275,578
Daytime Population	19,281	130,955	362,720
Total Households	3,864	42,884	122,932
Avg. HH Income	\$126,492	\$109,861	\$89,440

Data provided by Esri

## Rochelle DuBrule

407.581.6248 | [rdubrue@crossmanco.com](mailto:rdubrue@crossmanco.com)

3333 South Orange Avenue, Suite 201, Orlando, FL

Licensed Real Estate Broker. No warranty expressed or implied has been made to the accuracy of the information provided herein, no liability assumed for error or omission.

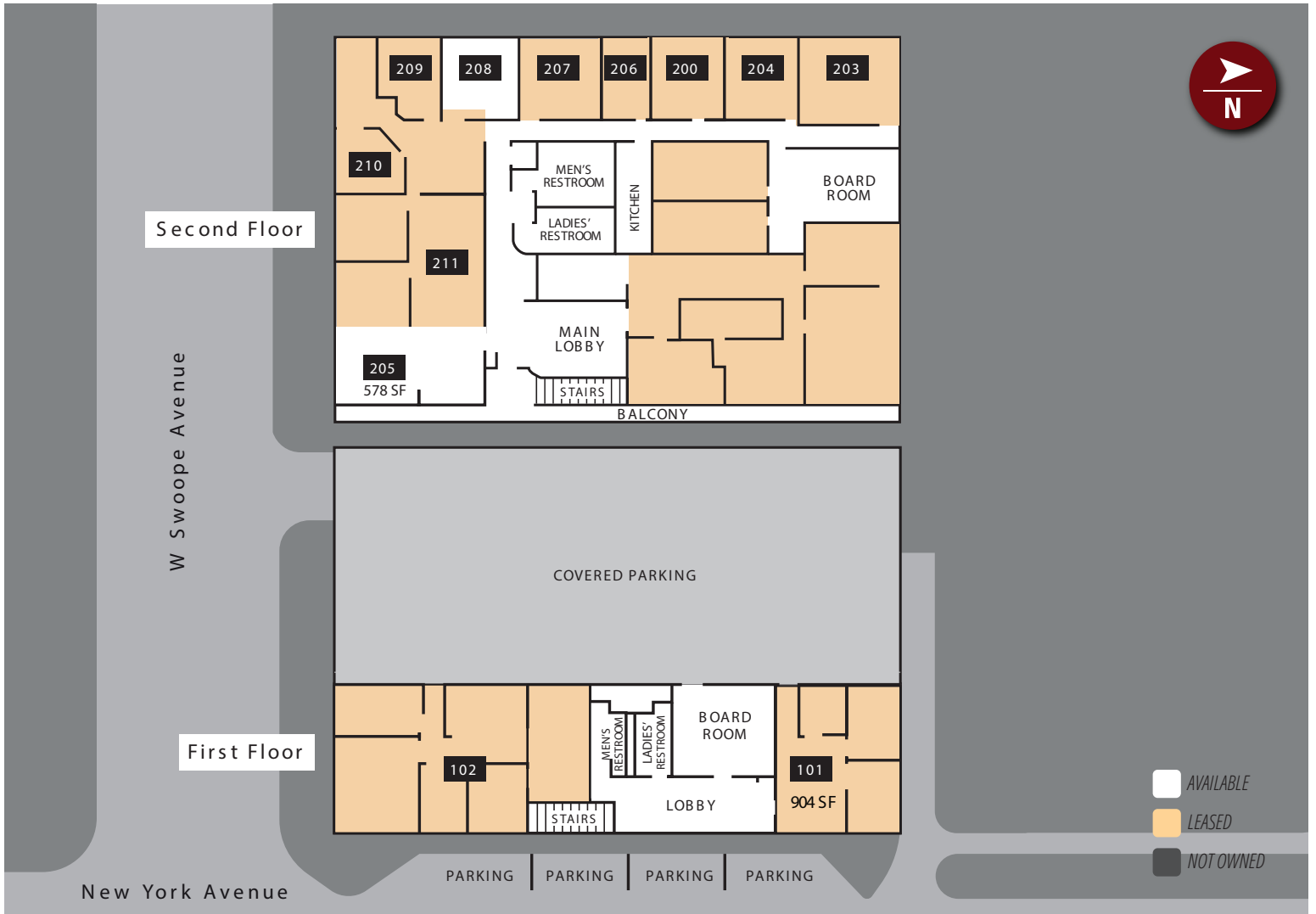


Crossman & Company

[www.crossmanco.com](http://www.crossmanco.com)

# New York Avenue

601 N. New York Avenue  
 Winter Park, FL 32789  
 Lat 28.602, Long -81.353



Suite	Tenant	Size
101	Leased	904
102	Leased	1,039
200	Leased	170
203	Leased	170
205	AVAILABLE	578
206	Leased	128
207	Leased	190

Suite	Tenant	Size
208	AVAILABLE	170
209	Leased	155
210	Leased	110
211	Leased	515
<b>TOTAL</b>		<b>2,941</b>



## Rochelle DuBrule

407.581.6248 | [rdubrue@crossmanco.com](mailto:rdubrue@crossmanco.com)  
 3333 South Orange Avenue, Suite 201, Orlando, FL

*Licensed Real Estate Broker. No warranty expressed or implied has been made to the accuracy of the information provided herein, no liability assumed for error or omission.*



Crossman & Company

[www.crossmanco.com](http://www.crossmanco.com)

# New York Avenue

601 N. New York Avenue  
Winter Park, FL 32789  
Lat 28.602, Long -81.353



**Rochelle DuBrule**

407.581.6248 | [rdubrue@crossmanco.com](mailto:rdubrue@crossmanco.com)

3333 South Orange Avenue, Suite 201, Orlando, FL

*Licensed Real Estate Broker. No warranty expressed or implied has been made to the accuracy of the information provided herein, no liability assumed for error or omission.*



Crossman & Company

[www.crossmanco.com](http://www.crossmanco.com)