

FOR LEASE

Office / Warehouse

Northwest Orlando — Lee Road & John Young Parkway



Flexible Space!

Flexible Terms!

Move In Ready!

Ideal for:
Service Usage
Warehouse

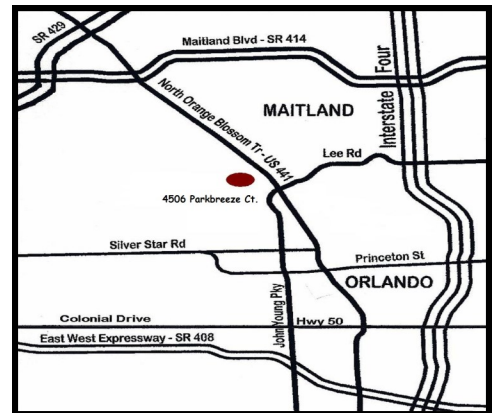
FOR INFORMATION:

J. Wallace and Associates, Inc.
4800 N. Orange Blossom Trail
Orlando, FL 32810

Phone: 407-291-9292
Fax: 407-297-9292
www.jwallaceassociates.com
Certified General Contractor
CGCo11457

FEATURES

- 3,500 Square Feet Office/Warehouse
- 12 Foot Ceilings
- 1 Ground Loading Door
- Close to the Cities of Orlando and Maitland
- Minutes from Major Roadways 414, 429, 408, and Interstate 4

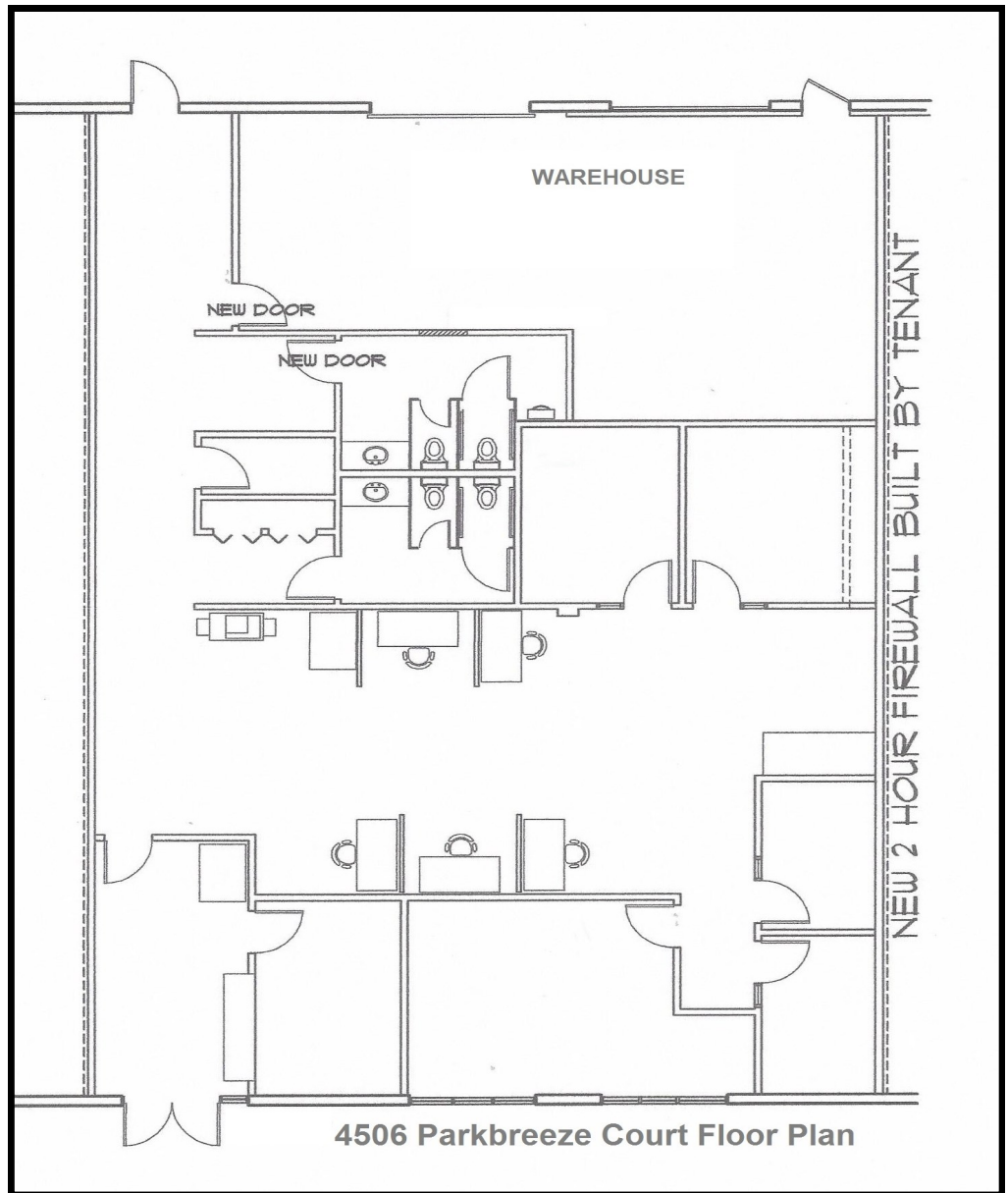


JWallace
& ASSOCIATES
Licensed Real Estate Broker

J. Wallace and Associates, Inc. is a commercial real estate firm and general contractor. Although all information provided regarding for sale, rental or financing is from sources we deem reliable. Such information has not been verified and no express representation is made nor is any to be implied as to the accuracy thereof, and it is submitted subject to errors, omissions, changes of price, rental or other conditions, prior sale, lease or financing, or withdrawal without notice.

For Additional Information On This And
Other Available Commercial and Industrial
Properties Please Contact us at:

407-291-9292



JWallace
& ASSOCIATES
Licensed Real Estate Broker

4800 N. Orange Blossom Trail
Orlando, FL 32810
Phone: 407-291-9292
Fax: 407-297-9292
www.jwallaceassociates.com
Certified General Contractor
CGC011457



FRONT ENTRANCE

Floor Plan