

For Lease

# 11101 LA REINA AVE

*Retail / Medical Office Spaces  
Available for NNN Lease*

DOWNEY, CA 90241

11101 LA REINA AVE, DOWNEY, CA 90241



*Former bank space in Downey, CA featuring corner location on La Reina Ave and 2nd St. The property is located near neighborhoods and amenities.*

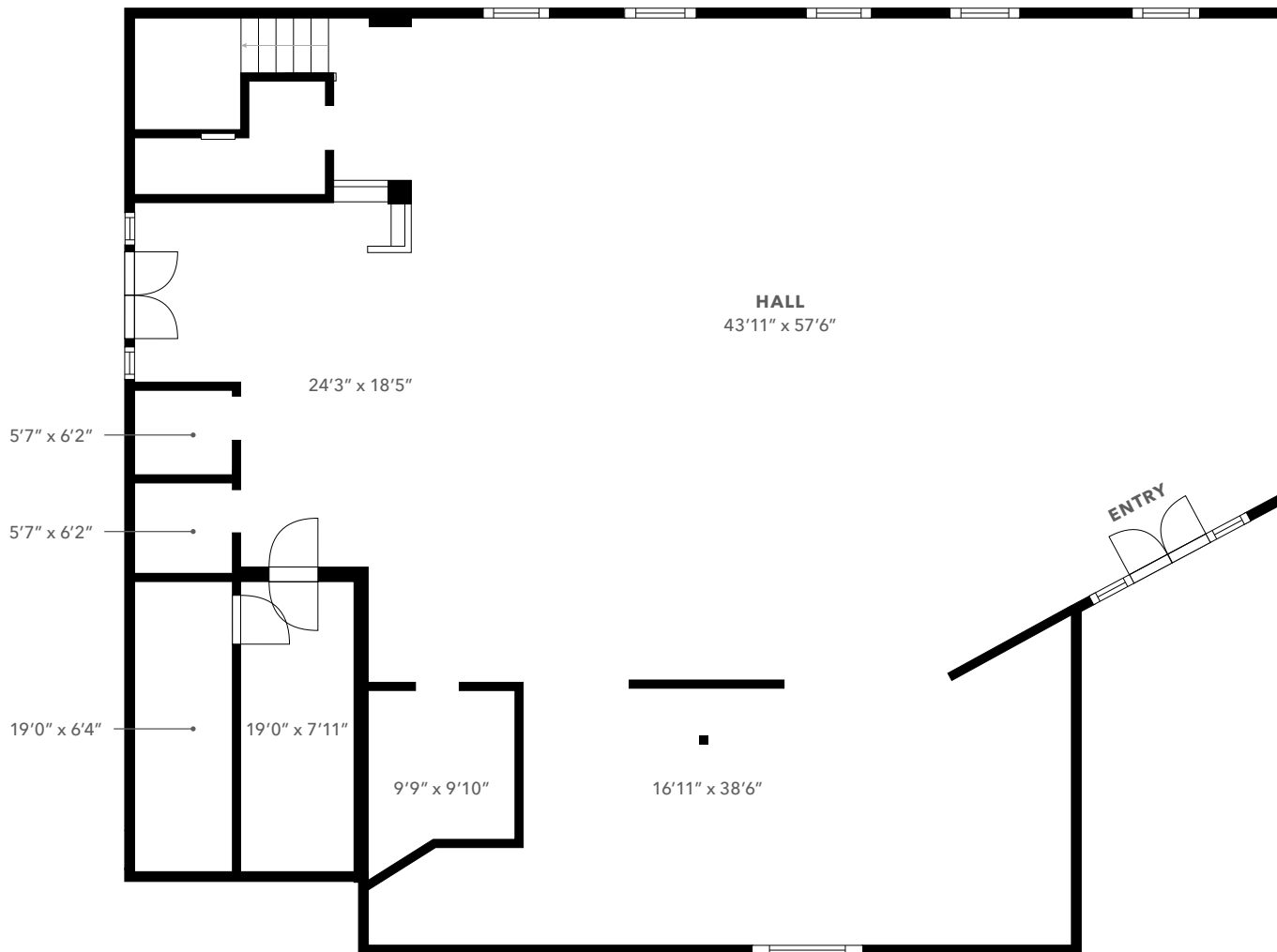
PROPERTY TYPE	Retail / Medical Office
RETAIL SUITE 101	±5,418 SF
MEDICAL OFFICE SUITE 102	±1,494 SF
MEDICAL OFFICE SUITE 201	±3,612 SF (2nd Floor)
YEAR BUILT / RENOVATED	1960/1993
LEASE TYPE	NNN
PARKING RATIO	4.94/1,000 SF
TERM	Negotiable
CONDITION	Shell space

→ VIEW 3D VIRTUAL TOUR

**\$3/SF NNN**  
**\$0.64/SF**

ASKING PRICE

# FLOOR PLAN



*±5,418 SF*

RETAIL SUITE 101

*±1,494 SF*

MEDICAL OFFICE SUITE 102

*±3,612 SF*

MEDICAL OFFICE SUITE 201  
(2ND FLOOR)

*NOW*

AVAILABLE

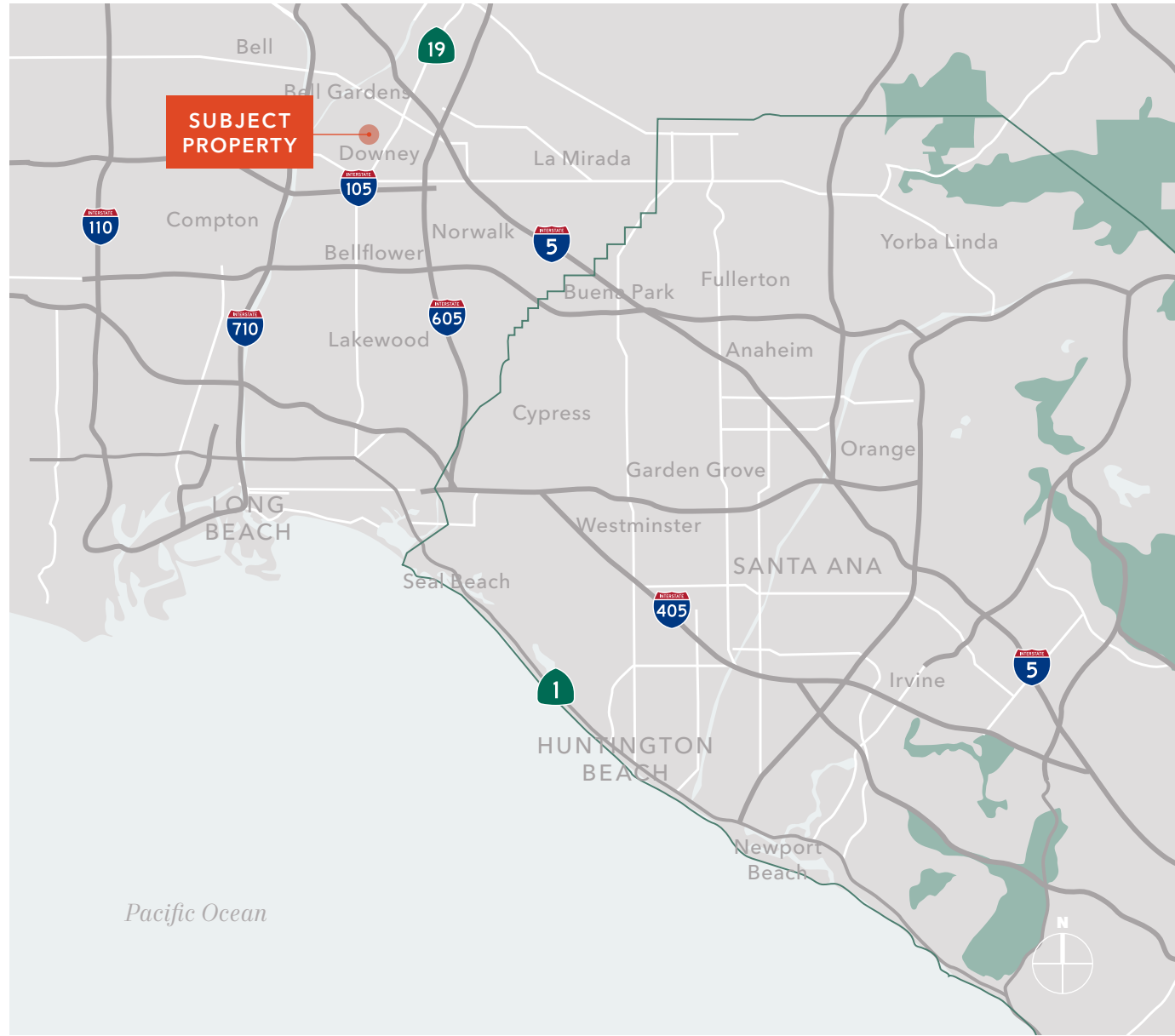
11101 LA REINA AVE, DOWNEY, CA 90241

# *PRIME* LOCATION

Located on a highly visible corner in downtown Downey

Conveniently located near major confluences State Route 19, Interstates 5, 105, 605, and 710

90 walk score (walker's paradise)





11101 LA REINA AVE  
DOWNEY, CA 90241

*Exclusively leased by*

JIMMY KIM  
949.557.5037  
jimmy.kim@kidder.com  
LIC N° 01992028

KIDDER.COM

This information supplied herein is from sources we deem reliable. It is provided without any representation, warranty, or guarantee, expressed or implied as to its accuracy. Prospective Buyer or Tenant should conduct an independent investigation and verification of all matters deemed to be material, including, but not limited to, statements of income and expenses. Consult your attorney, accountant, or other professional advisor.

 **Kidder  
Mathews**