

FOR SALE OR LEASE

Industrial Shop Condos

9819 Industrial Drive, Horace, ND 58047

MLS #25-246, 25-247, 25-249, & 25-250



PROPERTY DESCRIPTION:
Spacious shop bays with 14' overhead garage doors are available just south of Horace. Each unit includes a floor drain, ceiling fan, 200 amp single phase electrical panel, and LED light fixtures. Some units include a mezzanine for an additional fee. Each space is 30' x 50' but double units are available. Units could be combined to provide ample storage or space for your hobbies. No exterior storage. Units include a bathroom.



JUSTIN GUSTOFSON, SIOR, CCIM, REALTOR®

701-499-3875

justin@prgcommercial.com

www.PropertyResourcesGroup.com

4609 33rd Ave S. Suite 400, Fargo, ND 58104

All information contained herein is believed to be true, but should be verified to the buyer's satisfaction in case of error, typographical or otherwise. All information is subject to change without further notice.

9819 Industrial Drive, Horace, ND 58047

PROPERTY DESCRIPTION: Spacious shop bays with 14' overhead garage doors are available just south of Horace. Each unit includes a floor drain, ceiling fan, 200 amp single phase electrical panel, and LED light fixtures. Some units include a mezzanine for an additional fee. Each space is 30' x 50' but double units are available. Units could be combined to provide ample storage or space for your hobbies. No exterior storage. Units include a bathroom.

INDIVIDUAL UNIT SIZE: 1,500 SF

LEASE RATE: \$9.00 SF (\$9.50 SF - Mezzanine)

PURCHASE PRICE: \$200,000 (\$208,000 - Mezzanine)

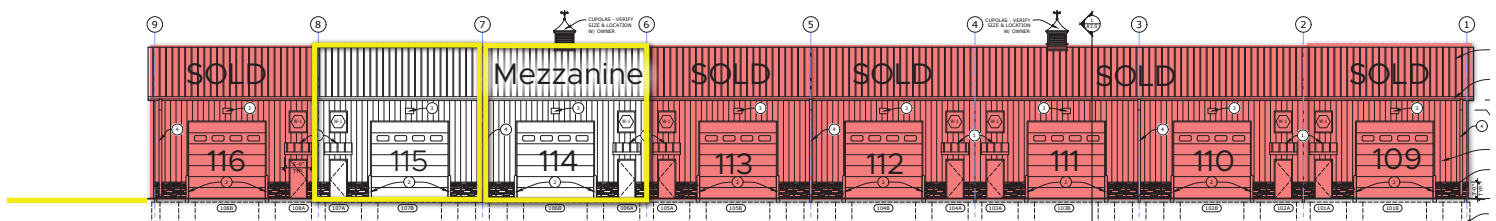
ESTIMATED CAM:

\$2.25 PSF

(Tenant pays utilities)

ASSOCIATION FEES:

\$125.00/mo (estimated)



JUSTIN GUSTOFSON, SIOR, CCIM, REALTOR®

701-499-3875

justin@prgcommercial.com

www.PropertyResourcesGroup.com

4609 33rd Ave S. Suite 400, Fargo, ND 58104