

FOR LEASE

301 SOUTHLAKE BOULEVARD
RICHMOND, VA 23236

125 YEARS SERVING RICHMOND

POLLARD & BAGBY

REAL ESTATE



DESCRIPTION

Located prominently on the corner of Southlake Blvd. and Courthouse Rd. This two-story brick office building features fantastic signage opportunities, ample parking, attractive landscaping and abundant natural lighting. The property is located less than half a mile from Chesterfield Towne Center and Midlothian Tpke (Route 60).

PROPERTY FEATURES

- Suite 101: 1,214 SF
- Suite 200: 1,532 SF
- Suite 202: 1,608 SF
- Second floor suites can be leased for a combined 3,140 SF
- Rate: Contact Agent
- All services provided
- Zoning - O-2 (Chesterfield County)

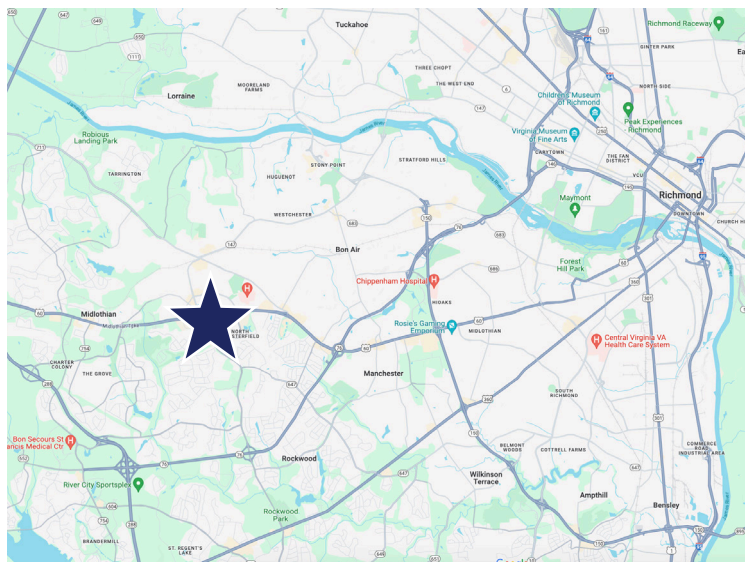
CONTACT INFORMATION

Pollard & Bagby, Inc.

Serving Richmond's Real Estate Market Since 1894
2 South 5th Street, P.O. Box 2488, Richmond, VA
O 804.643.9011 | F 804.782.9897 | www.pollardandbagby.com

G. Scott White, SIOR, CCIM

Senior Vice President - Commercial Sales & Leasing
C 804.221.3978 | scott.white@pollardandbagby.com



Lebs Breedon, CCIM

Commercial Sales, Leasing & Property Management Associate
C 804.536.3933 | lebs.breedon@pollardandbagby.com

No warranty or representation is made as to the accuracy of the foregoing information. Terms of sale or lease and availability are subject to change or withdrawal without notice.

FOR LEASE

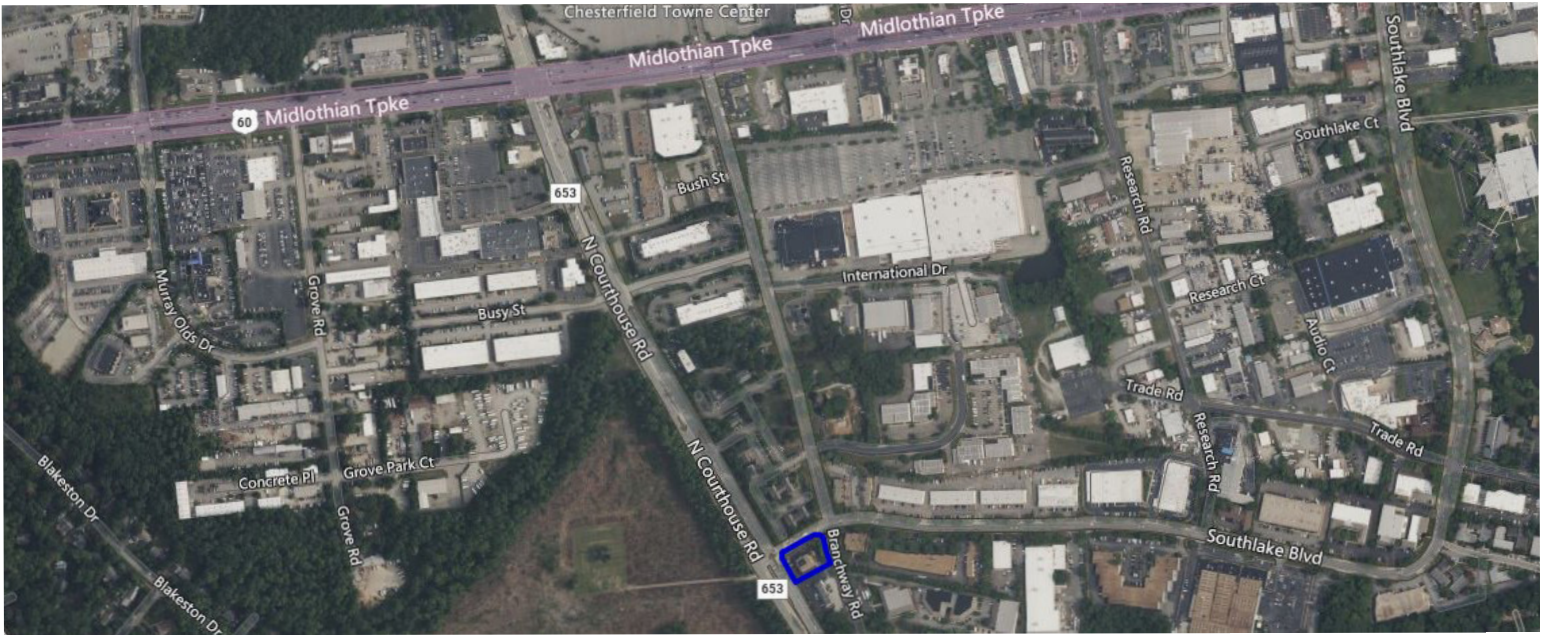
301 SOUTHLAKE BOULEVARD
RICHMOND, VA 23236

125 YEARS SERVING RICHMOND

POLLARD & BAGBY

REAL ESTATE

AERIAL MAPS



No warranty or representation is made as to the accuracy of the foregoing information. Terms of sale or lease and availability are subject to change or withdrawal without notice.