



FOR LEASE

4614 2nd Street

DAVIS, CA



±1,801 SF - ±5,424 SF Office/Flex/Retail
Showroom/R&D | For Lease: \$1.75/SF*

FORMER Engineering Office and
Florist Showroom

13'-15' Clear Height - Great Creative
Space

POWER 600 amps

READY for immediate occupancy

ZONED Light Industrial Business Park

LOCATED just off Interstate 80 at
Mace Blvd

ACROSS the street from the Target
Center

15 MINUTES to the State Capitol

* Industrial Gross; Tenant pays
separately metered utilities and
estimated CAM charges of \$0.34/SF/
month

JIM GRAY, LEED AP, CCIM

916.947.5142

jim.gray@kidder.com

LIC N° 00775072

NAHZ ANVARY, CCIM

916.284.8385

nahz.anvary@kidder.com

LIC N° 01468557

KIDDER.COM

This information supplied herein is from sources we deem reliable. It is provided without any representation, warranty, or guarantee, expressed or implied as to its accuracy. Prospective Buyer or Tenant should conduct an independent investigation and verification of all matters deemed to be material, including, but not limited to, statements of income and expenses. Consult your attorney, accountant, or other professional advisor.

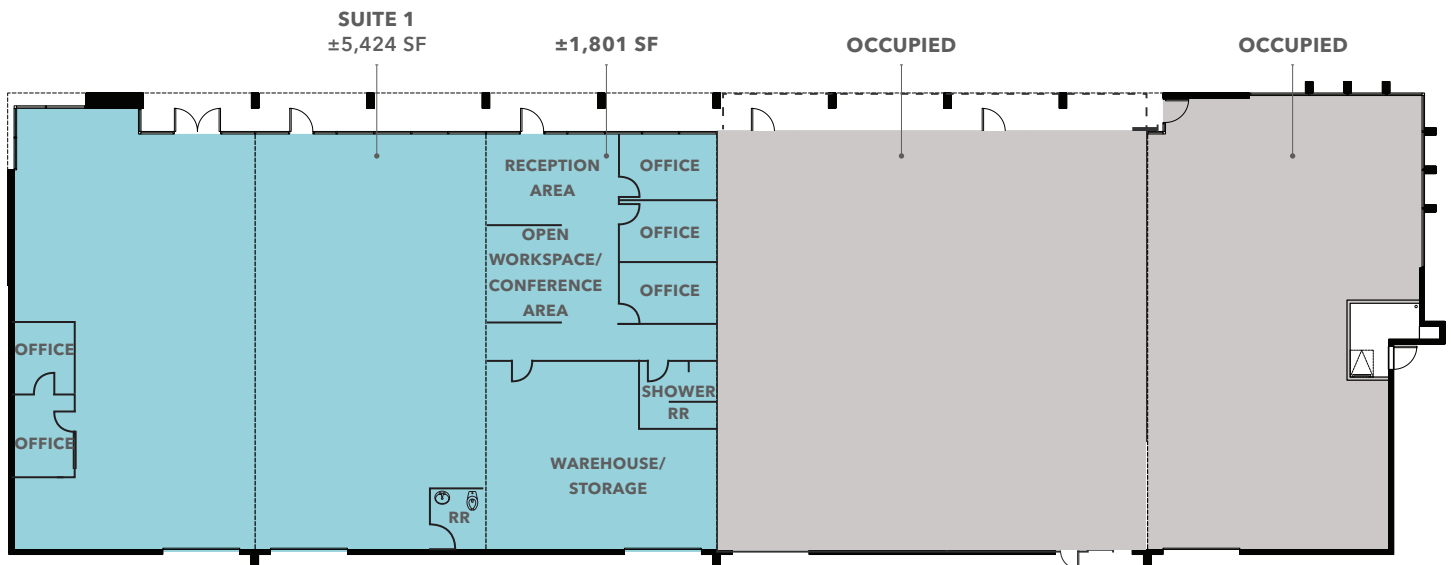
**Kidder
Mathews**

FOR LEASE

4614 2nd Street

DAVIS, CA

Full Floor Plan



KIDDER.COM

This information supplied herein is from sources we deem reliable. It is provided without any representation, warranty, or guarantee, expressed or implied as to its accuracy. Prospective Buyer or Tenant should conduct an independent investigation and verification of all matters deemed to be material, including, but not limited to, statements of income and expenses. Consult your attorney, accountant, or other professional advisor.

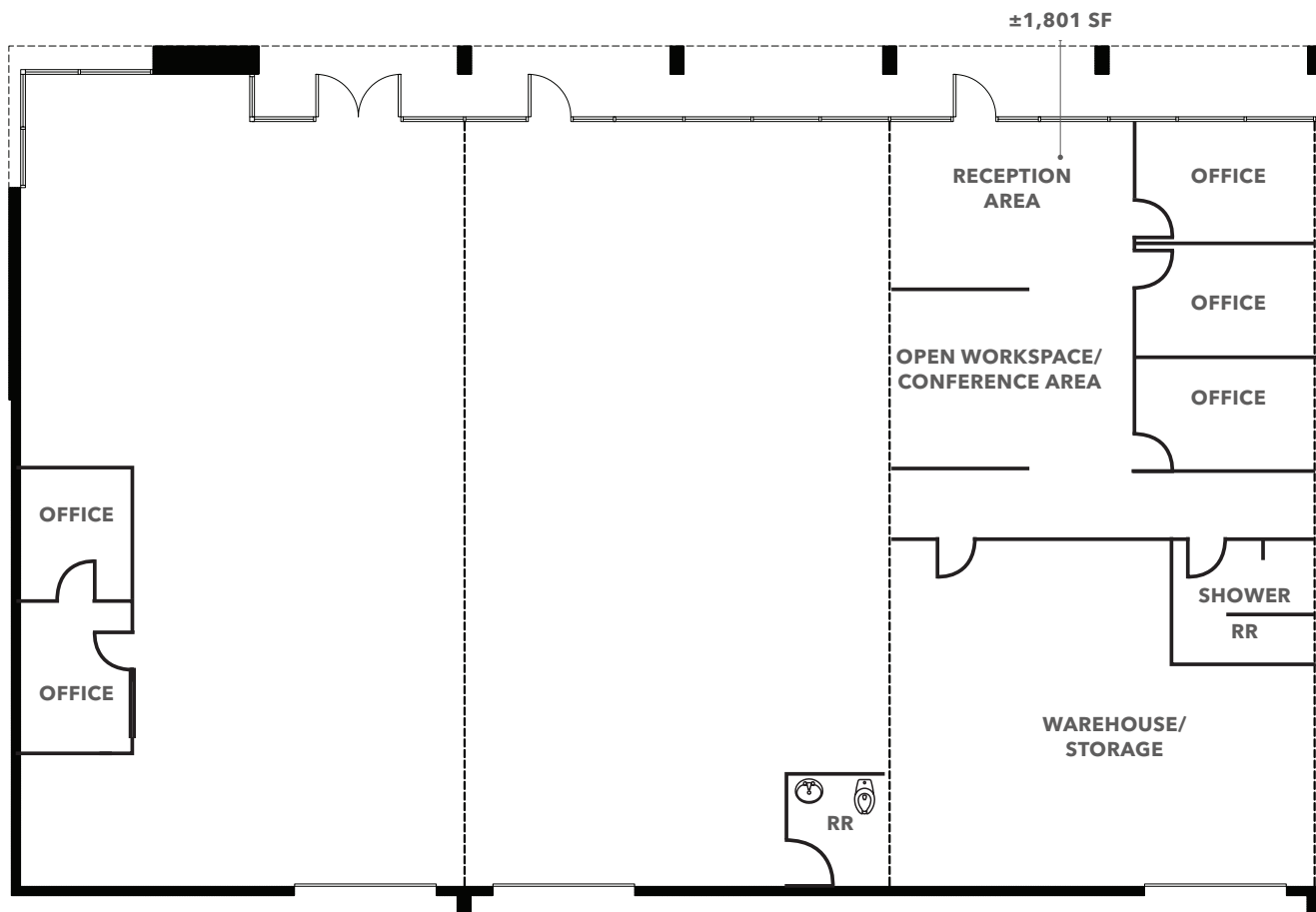
km Kidder Mathews

FOR LEASE

4614 2nd Street

DAVIS, CA

Floor Plan - Suite 1: ±5,424 SF



KIDDER.COM

This information supplied herein is from sources we deem reliable. It is provided without any representation, warranty, or guarantee, expressed or implied as to its accuracy. Prospective Buyer or Tenant should conduct an independent investigation and verification of all matters deemed to be material, including, but not limited to, statements of income and expenses. Consult your attorney, accountant, or other professional advisor.

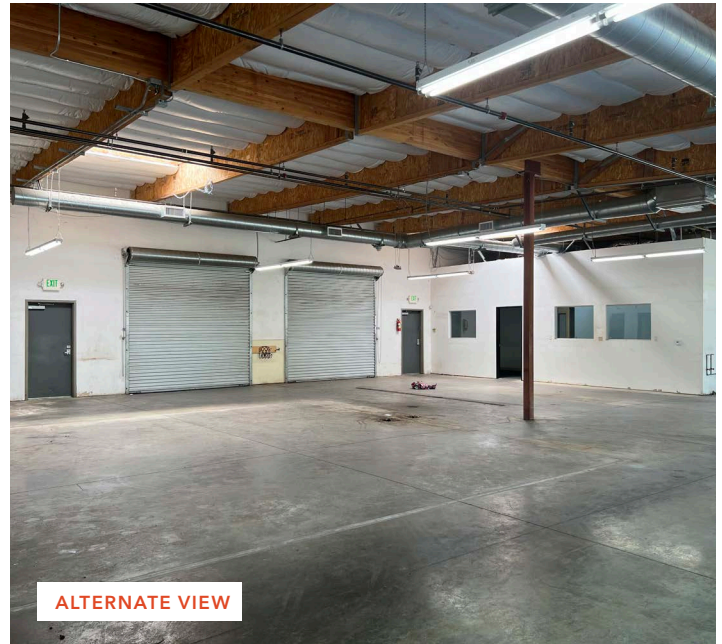
km Kidder Mathews

FOR LEASE

4614 2nd Street

DAVIS, CA

Suite 1 Photos



KIDDER.COM

This information supplied herein is from sources we deem reliable. It is provided without any representation, warranty, or guarantee, expressed or implied as to its accuracy. Prospective Buyer or Tenant should conduct an independent investigation and verification of all matters deemed to be material, including, but not limited to, statements of income and expenses. Consult your attorney, accountant, or other professional advisor.

km Kidder Mathews

FOR LEASE

4614 2nd Street

DAVIS, CA



KIDDER.COM

This information supplied herein is from sources we deem reliable. It is provided without any representation, warranty, or guarantee, expressed or implied as to its accuracy. Prospective Buyer or Tenant should conduct an independent investigation and verification of all matters deemed to be material, including, but not limited to, statements of income and expenses. Consult your attorney, accountant, or other professional advisor.

km Kidder Mathews