

S 15°06' 26"W. - 467.52'

NOW OR FORMERLY SOMERSET VALLEY PROPERTIES

LOT No. 1903
NOW OR FORMERLY
STARLEY KARCZYNSKI

S. 80°09' E. - 506.26'

N. 9°09'56" E. - 134.50'

LOT No. 19.01
BLOCK 517.02

TOTAL LOT AREA:
217,800.00 SQ. FT.
OR 500 ACRES

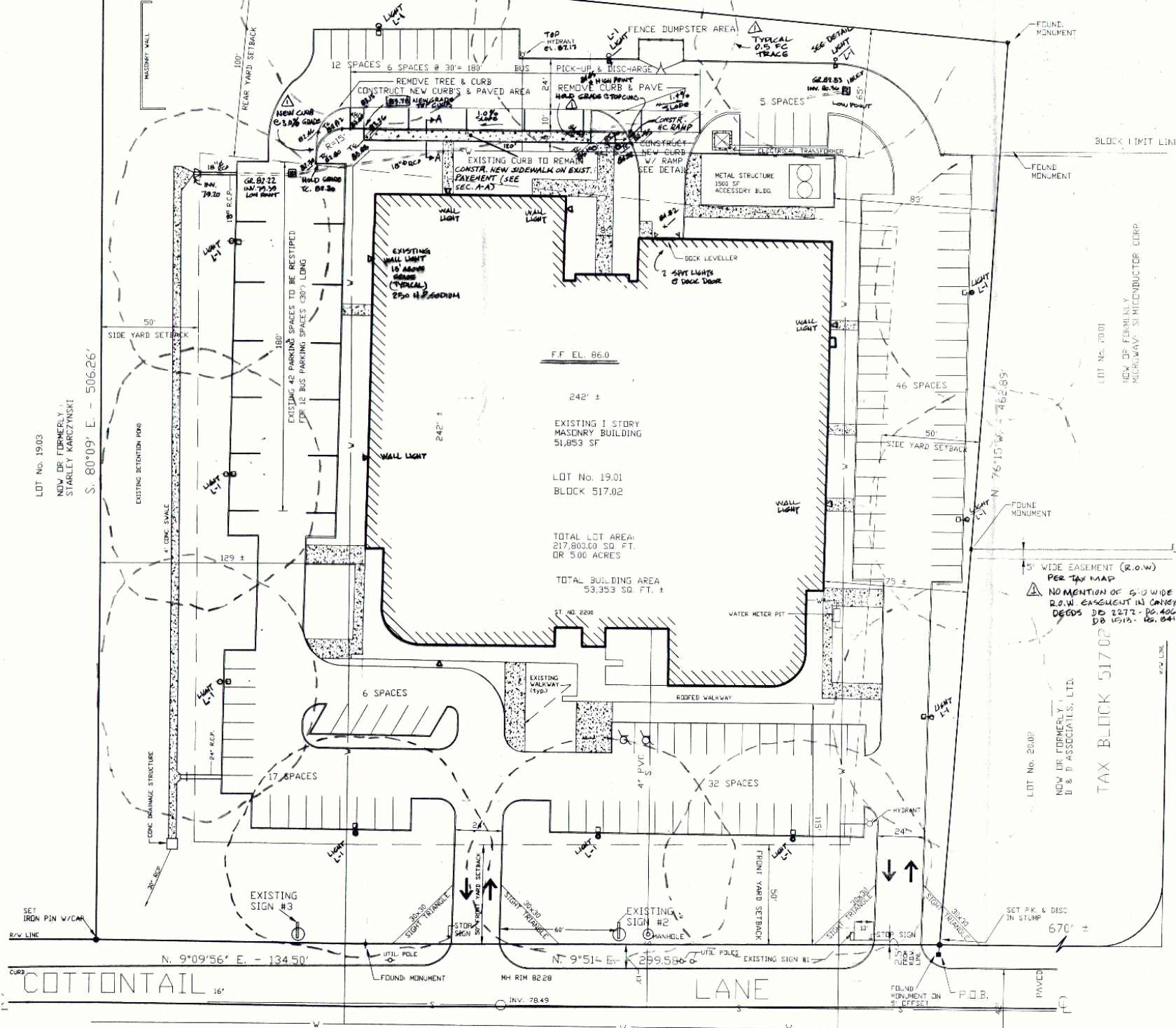
TOTAL BUILDING AREA
53,353 SQ. FT. ±

LOT No. 2001
NOW OR FORMERLY
MICROWAY - SEMICONDUCTOR CORP.

TAX BLOCK 517.02

LOT No. 2002
NOW OR FORMERLY
B & J ASSOCIATES, LTD.

SCHOOLHOUSE < 41° R/W > RD.



5' WIDE EASEMENT (R.O.W.)
PER TAX MAP
NO MENTION OF 5'-0" WIDE
R.O.W. EASEMENT IN CONYAXE
DEEDS DB 2272 - PG. 406
DB 1513 - PG. 041

COTTONTAIL

LANE

(66' R.O.W.)

HYDRANT