



2121 NORTH ST. MARY'S SAN ANTONIO, TX



Tobin Hill, San Antonio

PRODUCT:	RSF:	PARKING RATIO:	LAND SF:	PARKING:
2nd Generation Restaurant	6,836	9.0 per 1,000	29,621	61

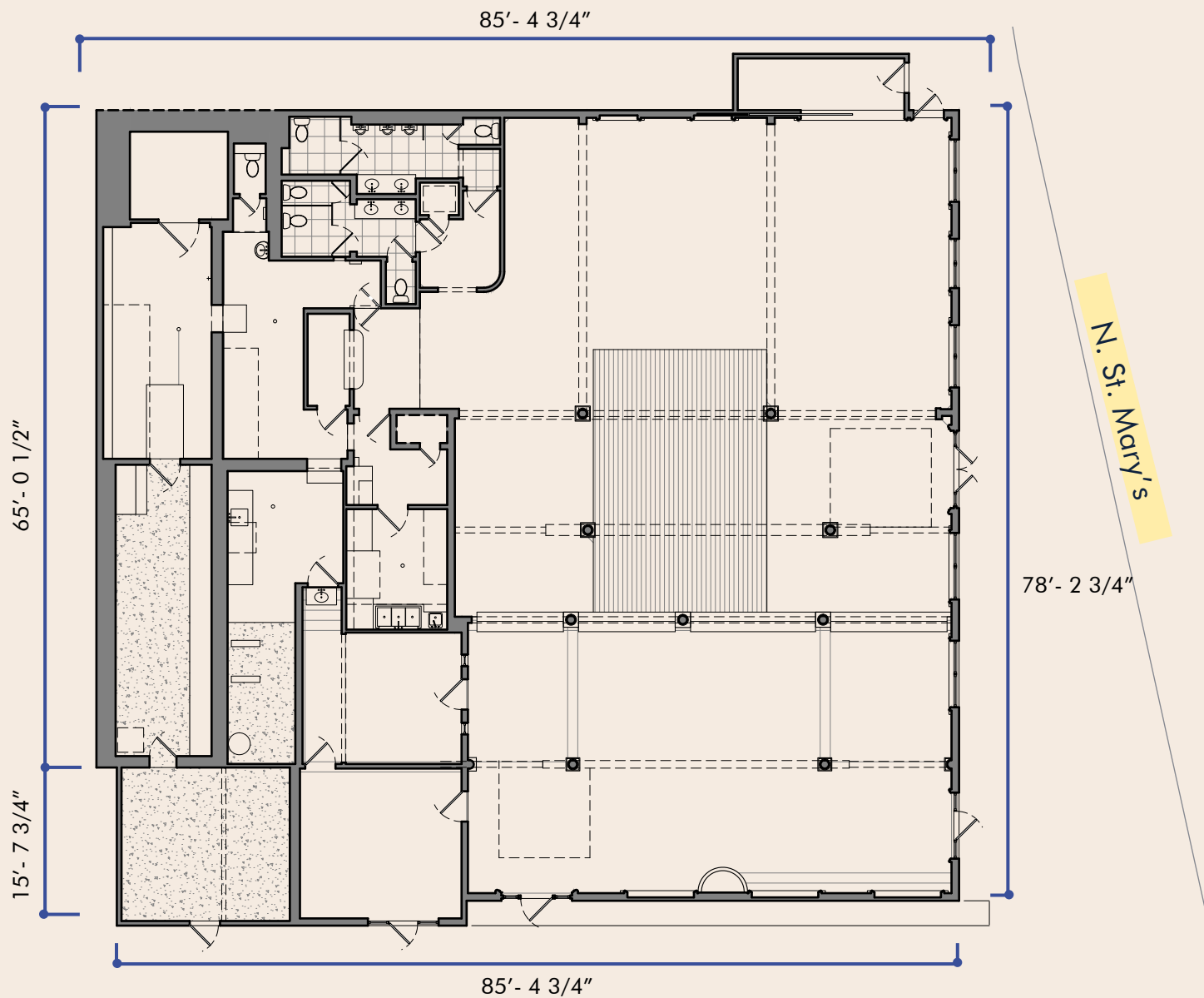


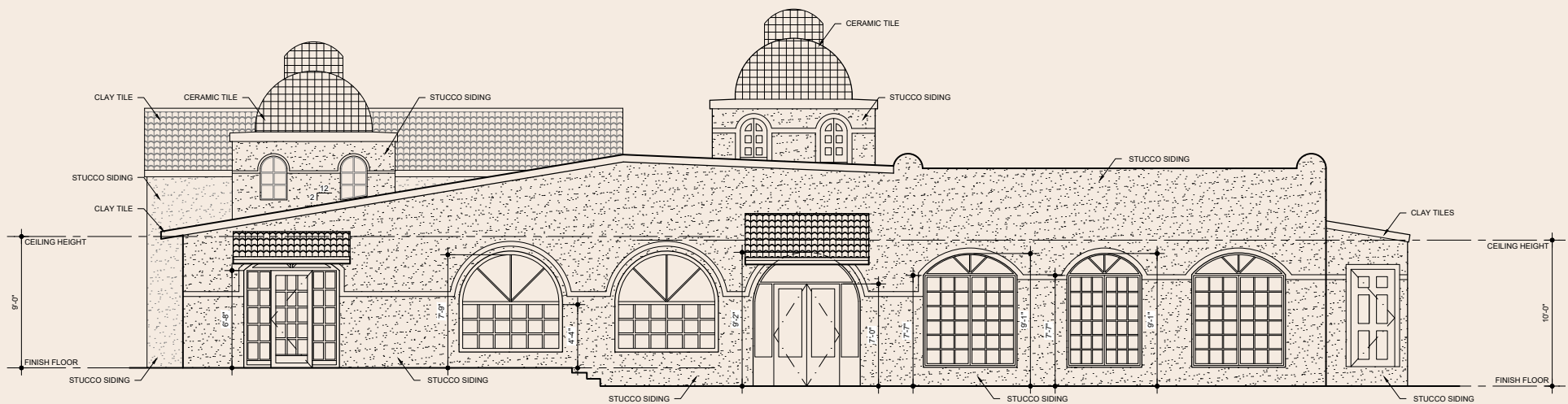
Property Information

Photography









1
A-200
1/4"=1'-0"

FRONT ELEVATION



Location Neighborhood

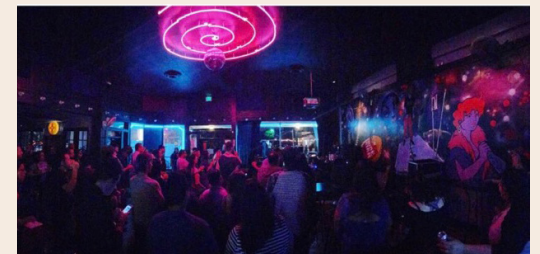


	Population	Average Household Income	Average Home Value
1 Mile	14,549	\$83,466	\$381,797
3 Mile	136,623	\$74,398	\$222,167
5 Mile	357,797	\$46,485	\$167,846



Location Neighborhood

Tobin Hill is one of San Antonio's most vibrant urban neighborhoods, blending historic charm with modern energy. Just north of downtown and steps from the Pearl District, it's a hub for eclectic dining, nightlife, and culture. With a mix of historic homes, new developments, and a walkable, artsy atmosphere, Tobin Hill attracts locals and visitors alike—making it a prime spot for shopping, dining, and community experiences.



Developer



Radom Capital is an award-winning, diversified real estate investment, development and management firm based down the road in Houston, Texas. We aspire to collaborate community, culture and commerce in all of our projects.

We are real estate dreamers.



Barton Kelly

Barton@RadomCapital.com
713-783-4444

Byron Sullivan

Byron@RadomCapital.com
361-288-5143