



306 Kings Highway S.

306 Kings Highway South
Cherry Hill Township, New Jersey 08034

Property Overview

Single Story Professional Office
6 Spacious Private Offices With Windows
2 Conference Room/Training Areas
Kitchen and 2 Bathrooms
Full Basement (Unfinished - Sprinklered)
25 Parking Spots (2 Handicap)
Handicap Accessible (Front and Back)
Close Proximity to Route 70
2025 Taxes: \$26,441.87

Offering Summary

Sale Price:	\$1,195,000
Building Size:	4,650 SF
Lot Size:	0.69 Acres

Demographics 1 Mile 2 Miles 3 Miles

Total Households	4,336	19,620	40,792
Total Population	11,019	50,126	102,285
Average HH Income	\$131,022	\$153,125	\$149,514

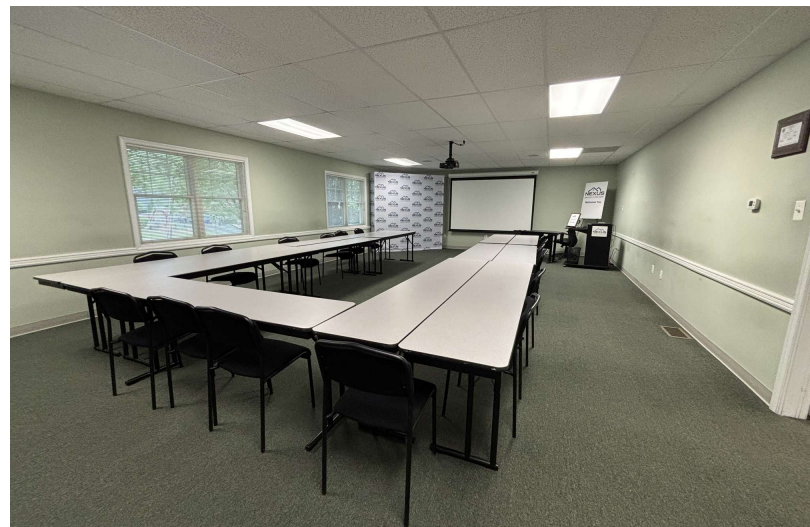
For More Information

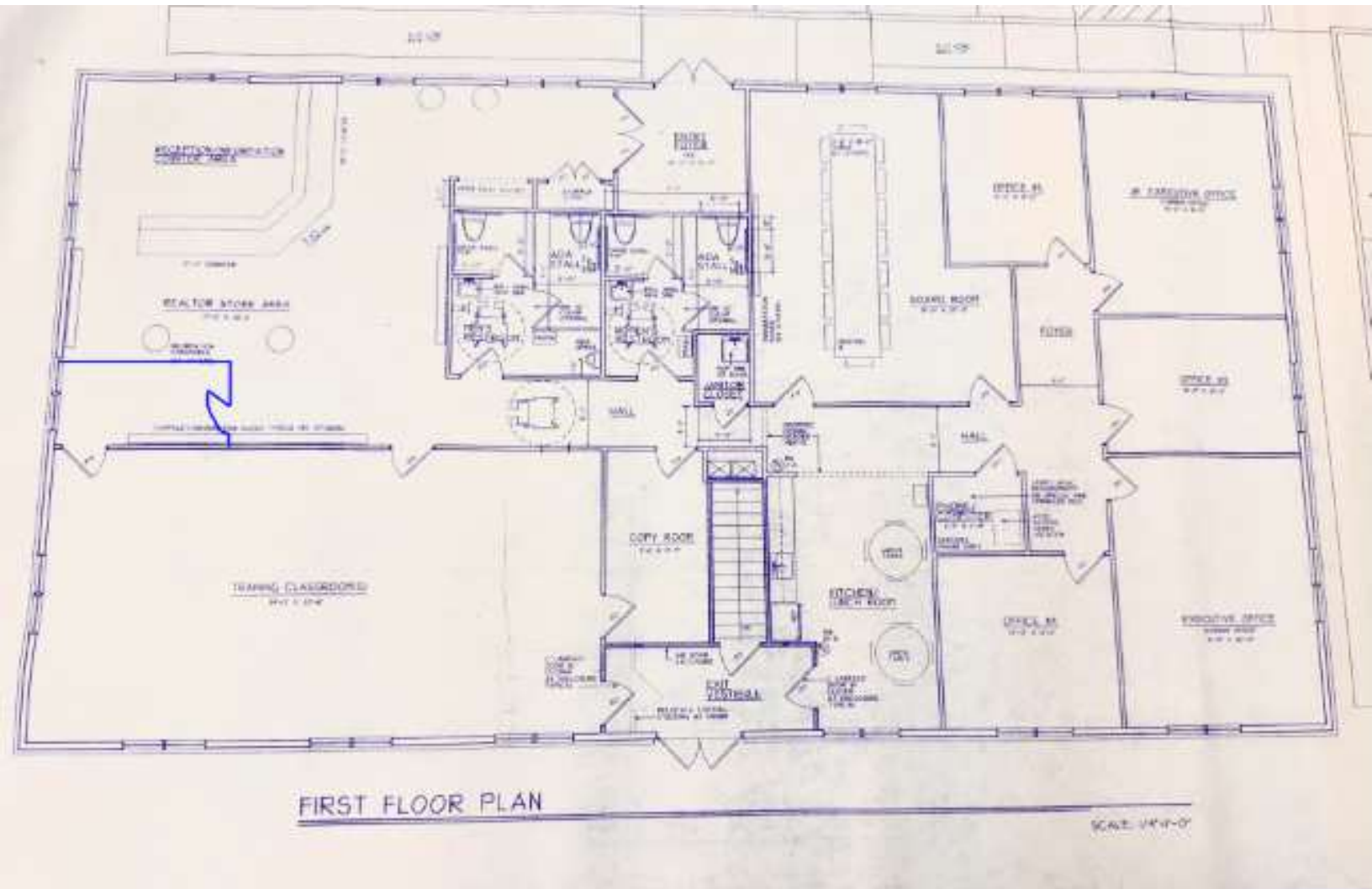
Joe Riggs

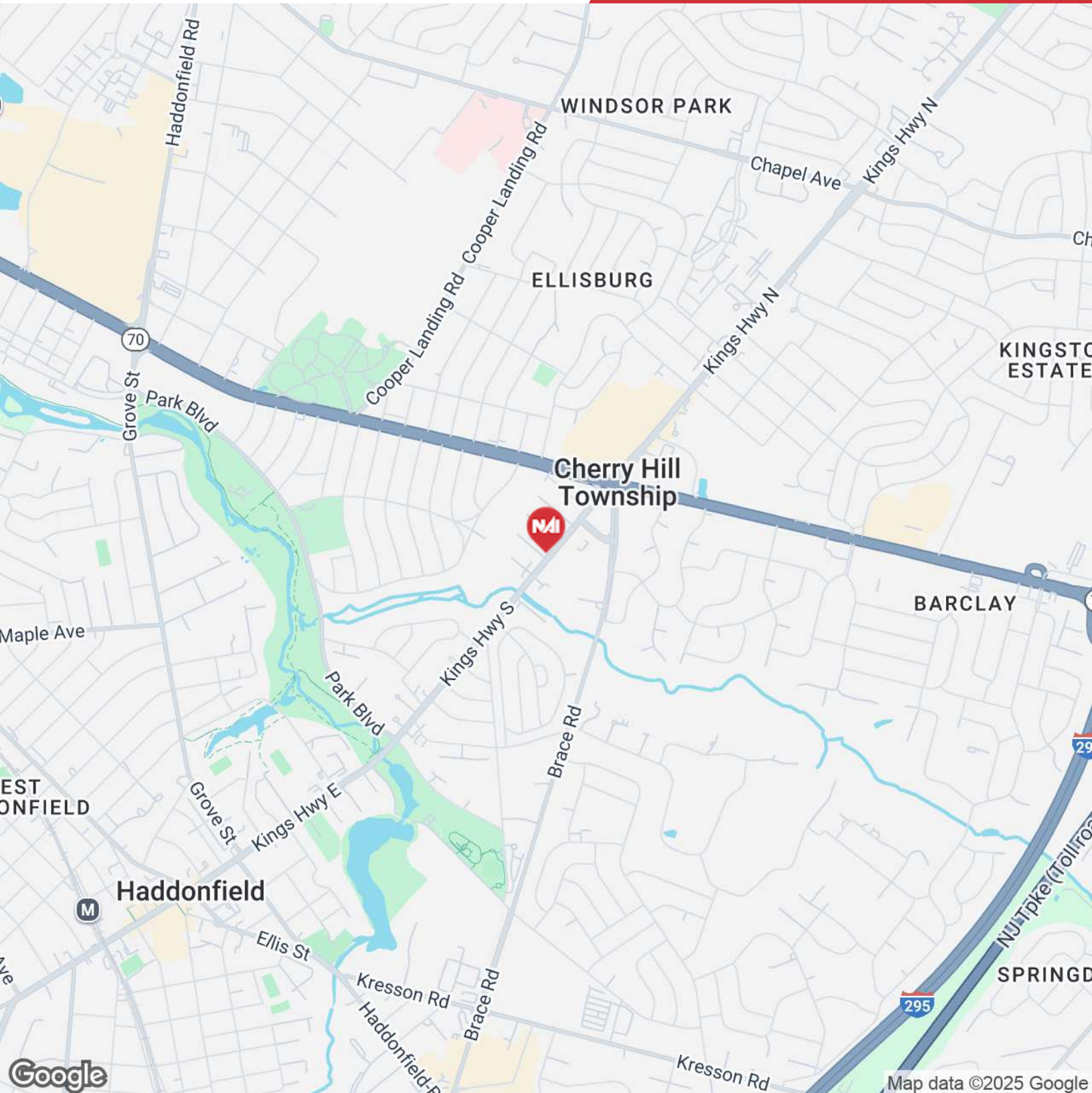
O: 609 352 1162
joe.riggs@naimertz.com

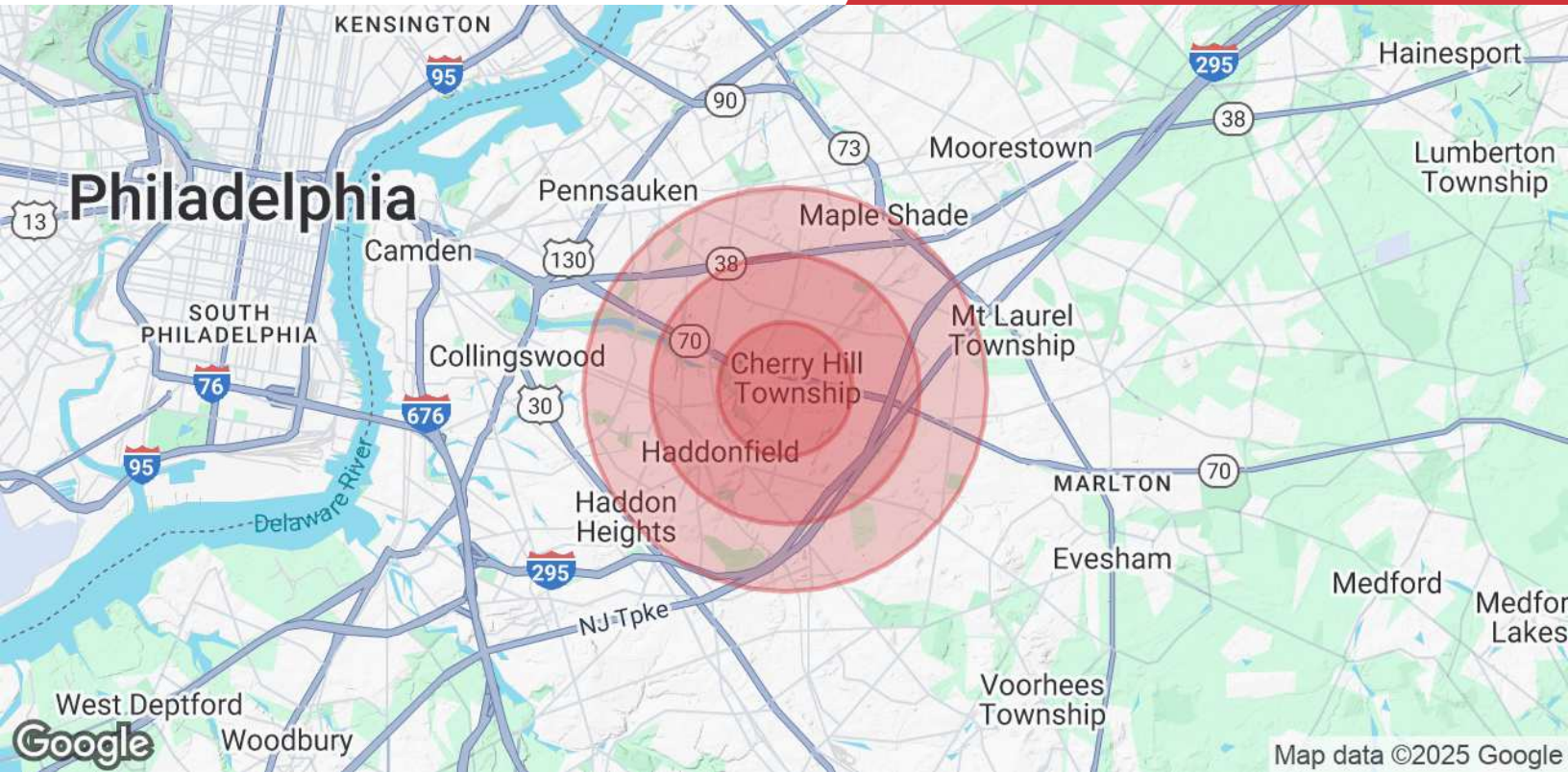
Will Frank

O: 856 724 4248
will.frank@naimertz.com









Population

	1 Mile	2 Miles	3 Miles
Total Population	11,019	50,126	102,285
Average Age	41	42	42
Average Age (Male)	40	40	41
Average Age (Female)	43	43	43

Households & Income

	1 Mile	2 Miles	3 Miles
Total Households	4,336	19,620	40,792
# of Persons per HH	2.5	2.6	2.5
Average HH Income	\$131,022	\$153,125	\$149,514
Average House Value	\$362,167	\$426,993	\$411,167

Demographics data derived from AlphaMap