



FOR SUBLEASE

**1001 TECHNOLOGY DRIVE
LITTLE ROCK, AR 72223**

**CLASS A
OFFICE SPACE**

UP TO 51,556 SF±

**FOR MORE INFORMATION
PLEASE CONTACT:**

RYAN GIBSON
501 716 5511
rgibson@sagepartners.com

501 716 5511
sagepartners.com

BUILDING FEATURES

1001 TECHNOLOGY DRIVE | LITTLE ROCK, AR 72223



Property Features

Building Size:	100,456 SF +/-
Space Available:	51,556 SF +/-
Acreage:	7.25 +/- acres
Year Built:	2000
Parking:	4/1,000 SF
Sublease Rate:	Negotiable
Lease Expiration:	August 31, 2025
Improvements:	\$2.55MM worth of improvements completed in 2022
Existing FFE:	Can be included



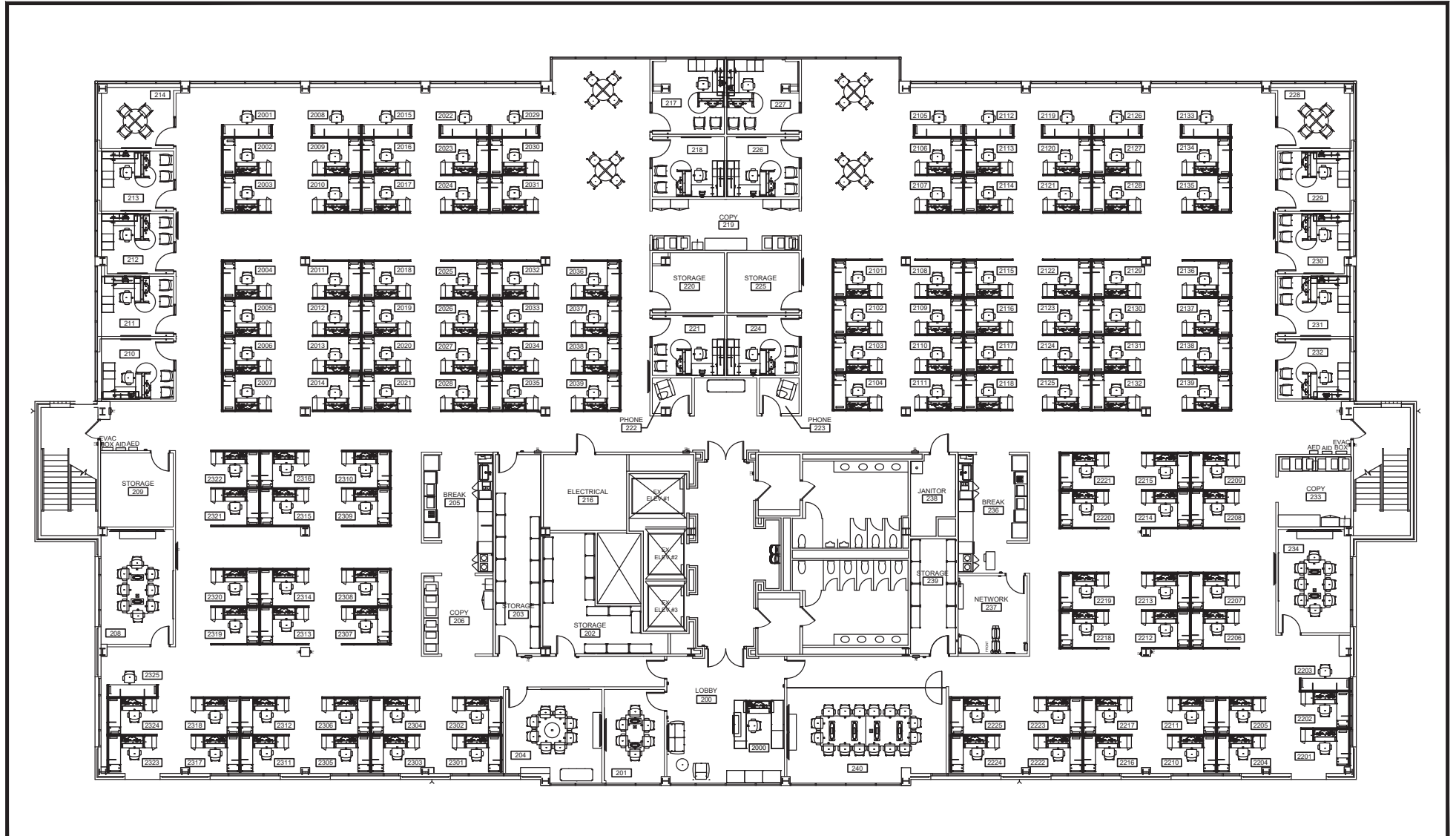
*information deemed reliable but not guaranteed

2ND FLOOR FLOORPLAN

1001 TECHNOLOGY DRIVE | LITTLE ROCK, AR 72223



1001 TECHNOLOGY DRIVE, LITTLE ROCK, AR, 2nd FLOOR



FOR INTERNAL USE ONLY

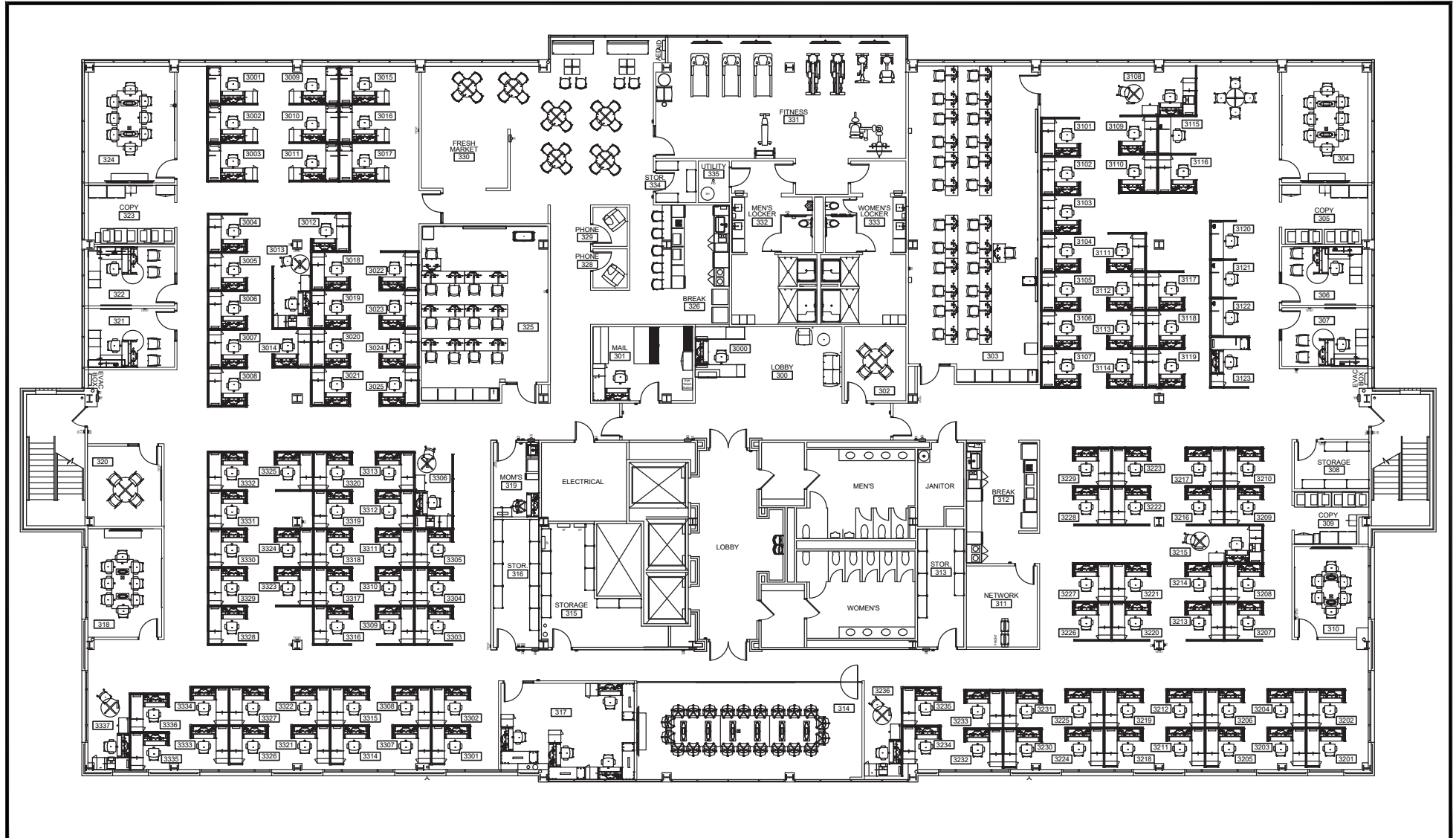
CENTENE CORPORATION

3RD FLOOR FLOORPLAN

1001 TECHNOLOGY DRIVE | LITTLE ROCK, AR 72223



1001 TECHNOLOGY DRIVE, LITTLE ROCK, AR, 3rd FLOOR

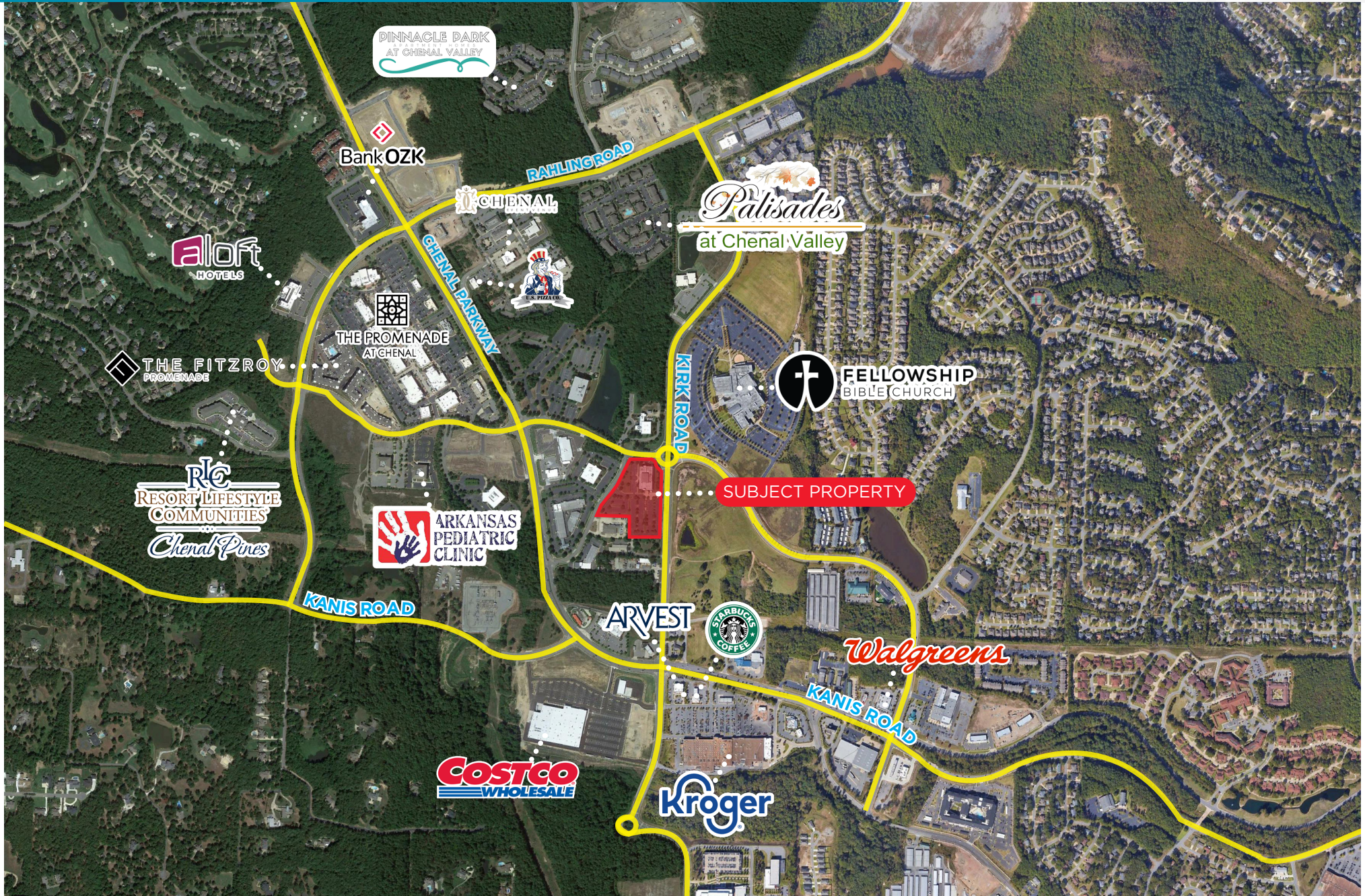


FOR INTERNAL USE ONLY

CENTENE CORPORATION

SITE MAP

1001 TECHNOLOGY DRIVE | LITTLE ROCK, AR 72223



Pinnacle Park
at Chenal Valley

Bank OZK

RAHLING ROAD

CHENAL

Palisades
at Chenal Valley

Aloft
HOTELS



THE PROMENADE
AT CHENAL

THE FITZROY
PROMENADE

FELLOWSHIP
BIBLE CHURCH

RLC
RESORT LIFESTYLE
COMMUNITIES
Chenal Pines

ARKANSAS
PEDIATRIC
CLINIC

ARVEST



SUBJECT PROPERTY

Walgreens

KANIS ROAD

Kroger

COSTCO
WHOLESALE

KANIS ROAD