



**FREESTANDING
RETAIL BUILDING
ON OUTPARCEL**

2135 N CHURCH STREET
BURLINGTON, NC 27217

NIKITA ZHITOV
919.888.1285
NIKITA@CITYPLAT.COM

FOR SALE
CITYPLAT
COMMERCIAL REAL ESTATE

KEITH BASHI
919.520.9634
KEITH@CITYPLAT.COM

TABLE OF CONTENTS

3	PROPERTY DASHBOARD
4	PHOTOS
7	FLOOR PLAN
8	SITE PLAN
9	AERIAL
10	LOCATION MAP
11	MARKET OVERVIEW

PROPERTY DASHBOARD

6,000 SF

TOTAL SQUARE FEET

\$795,000

ASKING PRICE

0.49 AC

ACRES

SINGLE

TENANCY

CZ

ZONING

1948

BUILT

- Loading dock
- 50+ paved parking spots
- Nearby to Walmart, Walgreens, and O'Reilly Auto Parts
- 6 miles to Elon University, 2.5 miles to downtown Burlington
- 5 miles to I-40 / I-85
- Outparcel to anchor tenants Ollie's Bargain Outlet, Dollar General, Aaron's, and CSL Plasma.
- Landlord-funded tenant improvements allowance available
- Will subdivide
- Free rent incentives by landlord • Lease option available









2135 N CHURCH STREET - 6000 SQ FT



N. Church Street

OUT PARCEL ONE

OUT PARCEL TWO

OUT PARCEL THREE

2141 N. Church St.

One Story Block Business

Gravel Parking

N. Mebane Street





Walmart

N Mebane St

DOLLAR GENERAL

CSL Plasma

OLLIE'S
GOOD STUFF CHEAP

Discount
Furniture
Superstore

Aaron's

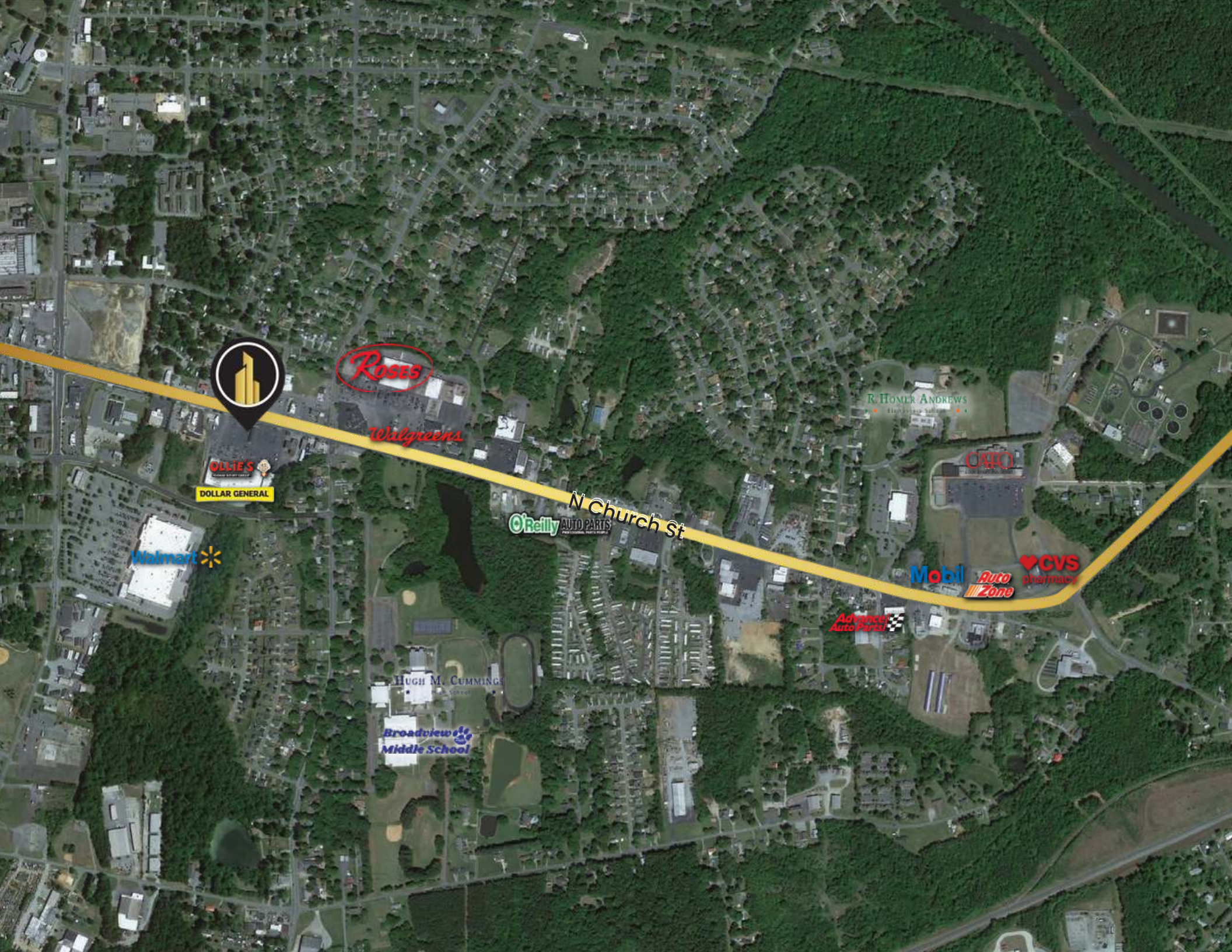
70

DO VPI7,00



6600/7500

Living Well



ROSES

Walgreens

OLIE'S
FRESH BAKERY

DOLLAR GENERAL

Walmart

O'Reilly
AUTO PARTS

N Church St

R. HOMER ANDREWS

OJO

Mobil

Auto
Zone

CVS
pharmacy

Advance
Auto Parts

HUGH M. CUMMINGS

Broadview
Middle School

MARKET OVERVIEW: BURLINGTON, NC



Burlington, NC, located in Alamance County and part of the Greensboro-High Point Metropolitan Area, boasts a diverse economy with key sectors in manufacturing, healthcare, retail, and education, anchored by major employers like Labcorp and Elon University. The real estate market is robust, with steadily increasing home prices and active rental and commercial sectors. The city supports small business growth and benefits from excellent connectivity via I-40 and I-85. Educational institutions such as Elon University and Alamance Community College contribute significantly to workforce development, enhancing Burlington's appeal as a dynamic and growing community.



Burlington's quality of life is enhanced by its blend of urban amenities and small-town charm. Residents enjoy a variety of recreational options, including parks, trails, and cultural venues like the Paramount Theater. The city offers a lower cost of living compared to larger metropolitan areas, making it an attractive place for families and professionals. With ongoing community development projects and a focus on revitalizing the downtown area, Burlington continues to evolve while maintaining a strong sense of community and accessibility. This balance of growth and livability positions Burlington as a desirable location for both residents and businesses.

CONFIDENTIALITY DISCLAIMER

THE INFORMATION CONTAINED IN THIS OFFERING MEMORANDUM IS PROPRIETARY AND STRICTLY CONFIDENTIAL. IT IS INTENDED TO BE REVIEWED ONLY BY THE PARTY(IES) RECEIVING IT FROM CITYPLAT, LLC AND SHOULD NOT BE MADE AVAILABLE TO ANY OTHER PERSON OR ENTITY WITHOUT THE WRITTEN CONSENT OF CITYPLAT, LLC. IF YOU ARE NOT THE INTENDED RECIPIENT, YOU ARE HEREBY NOTIFIED THAT ANY RETENTION, DISSEMINATION, DUPLICATION, FORWARDING, COPYING OR TAKING ANY ACTION IN RELIANCE ON THE CONTENTS OF THIS INFORMATION IS STRICTLY PROHIBITED. IF YOU RECEIVE THIS OFFERING MEMORANDUM IN ERROR, WHETHER IN ELECTRONIC OR PRINTED FORM, PLEASE NOTIFY THE SENDER AND DESTROY THE DOCUMENT.

THIS OFFERING HAS BEEN PREPARED TO PROVIDE A SUMMARY OF UNVERIFIED INFORMATION TO PROSPECTIVE PURCHASERS, AND TO ESTABLISH ONLY A PRELIMINARY LEVEL OF INTEREST IN THE SUBJECT PROPERTY. THE INFORMATION CONTAINED HEREIN IS NOT A SUBSTITUTE FOR A THOROUGH DUE DILIGENCE INVESTIGATION.

CITYPLAT, LLC HAS NOT MADE ANY INVESTIGATION, AND MAKES NO WARRANTY OR REPRESENTATION, WITH RESPECT TO THE INCOME OR EXPENSES FOR THE SUBJECT PROPERTY, THE FUTURE PROJECTED FINANCIAL PERFORMANCE OF THE PROPERTY, THE SIZE AND SQUARE FOOTAGE OF THE PROPERTY AND IMPROVEMENTS, THE PRESENCE OR ABSENCE OF CONTAMINATING SUBSTANCES, PCB'S OR ASBESTOS, THE COMPLIANCE WITH STATE AND FEDERAL REGULATIONS, THE PHYSICAL CONDITION OF THE IMPROVEMENTS THEREON, OR THE FINANCIAL CONDITION OR BUSINESS PROSPECTS OF ANY TENANT, OR ANY TENANT'S PLANS OR INTENTIONS TO CONTINUE ITS OCCUPANCY OF THE SUBJECT PROPERTY.

THE INFORMATION CONTAINED IN THIS OFFERING HAS BEEN OBTAINED FROM SOURCES WE BELIEVE ARE RELIABLE; HOWEVER, CITYPLAT, LLC HAS NOT VERIFIED, AND WILL NOT VERIFY, ANY OF THE INFORMATION CONTAINED HEREIN, NOR HAS CITYPLAT, LLC CONDUCTED ANY INVESTIGATION REGARDING THESE MATTERS AND MAKES NO WARRANTY OR REPRESENTATION WHATSOEVER REGARDING THE ACCURACY OR COMPLETENESS OF THE INFORMATION PROVIDED.

