

# VANROSE TECHNOLOGY CENTER

2625 NE Huffman Rd, Hillsboro, OR 97124



303,969 SF FOR LEASE OR SALE

SUMMER 2026 OCCUPANCY - CONSTRUCTION UNDERWAY

**WALLS TILTED!**



DEVELOPED BY:

Trammell Crow Company



**Kevin VandenBrink**

503.972.7289  
kevinv@macadamforbes.com  
Licensed In OR

**Clayton Madey**

503.972.7277  
clayton@macadamforbes.com  
Licensed In OR



2 Centerpointe Drive, Suite 500, Lake Oswego, OR 97035  
MACADAMFORBES.COM | 503.227.2500

# VANROSE TECHNOLOGY CENTER

2625 NE HUFFMAN RD, HILLSBORO, OR 97124

VanRose Technology Center is a brand-new industrial development in Hillsboro Corporate Park. Speculative construction commenced July 2025.

## THE DETAILS

- Pricing: Contact Broker
- Building Size: 303,969 SF
- Zoning: IS- Industrial Sanctuary, City of Hillsboro
- Hillsboro Enterprise Zone
- Occupancy: Summer 2026
- Ability to demise to 4 tenants (+/- 75,000 SF)
- Excellent roadway connections include: Evergreen Rd, Jackson School Rd, Huffman Rd, HWY 26, and Brookwood Pkwy
- Power and Utilities provided by: PGE and Hillsboro Municipal Utilities
- LEED certified project

## PROPOSED BUILDING

**303,969 SF ON 16.03 AC**

Minimum Lease Size:	~75,000 SF
Auto Parking:	234 (0.77 Parking Ratio)
Dock Doors:	56
Grade Doors:	4
Truck Court Depth:	135 ft
Clear Height:	36'
Building Depth:	480'
Minimum Power:	3-Phase, 3,000 amp service (power upgrade potential with adjacent future substation)
Trailer Parking Stalls:	33

Allowed uses including but not limited to:



LOGISTICS



MANUFACTURING



SEMICONDUCTOR



BIOTECH



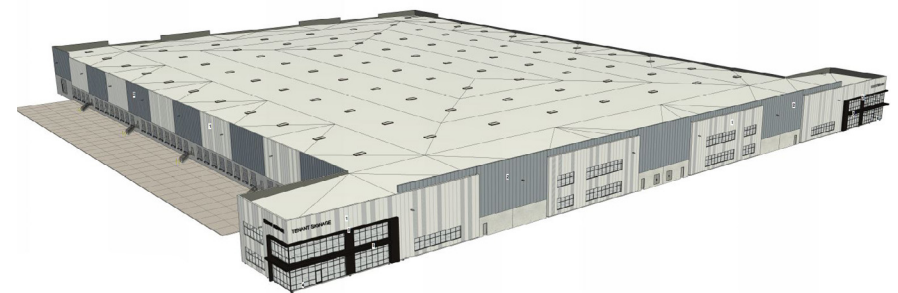
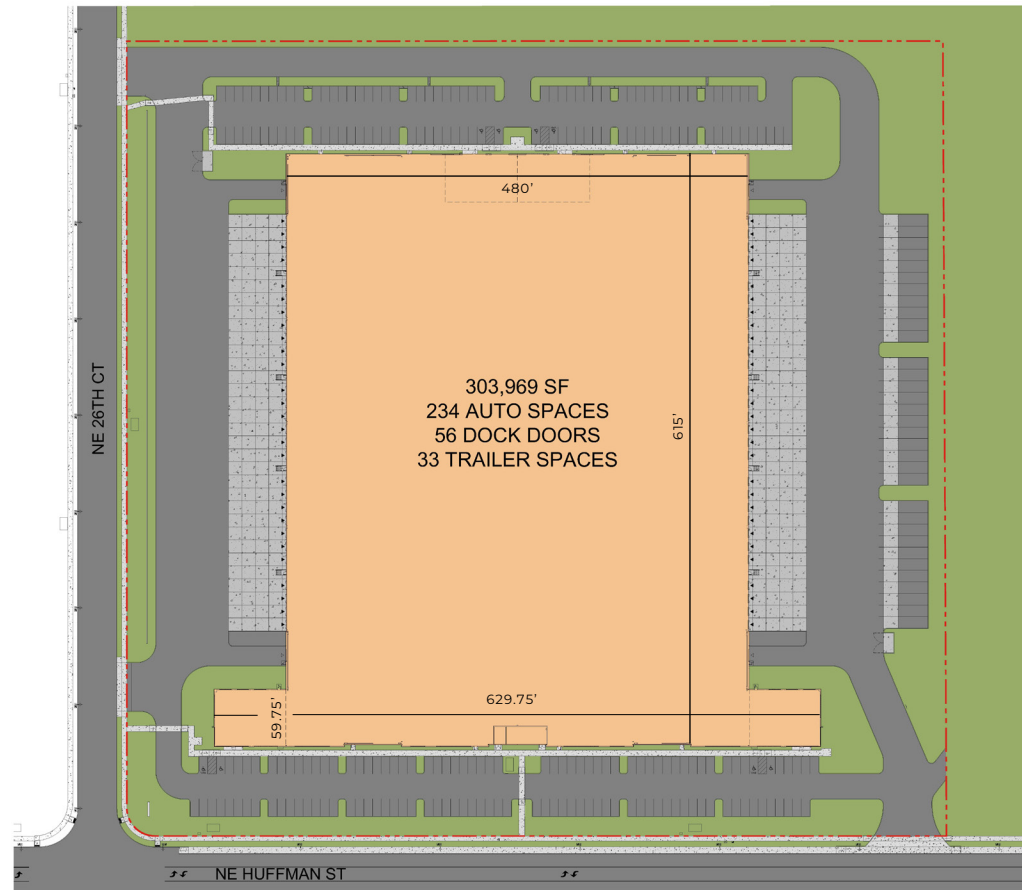
FOOD PRODUCTION



RESEARCH & DEVELOPMENT



CORPORATE HEADQUARTERS



# VANROSE TECHNOLOGY CENTER

2625 NE HUFFMAN RD, HILLSBORO, OR 97124



# VANROSE TECHNOLOGY CENTER

2625 NE HUFFMAN RD, HILLSBORO, OR 97124





## THE LOCATION

The City of Hillsboro has a decades-long history of providing growing companies with land, infrastructure, workforce, and economic incentives. These tools are designed to attract and retain some of Oregon's most significant employers and their clients, suppliers, and customers. In addition, HCP is located within the Hillsboro Enterprise Zone Program, which offers substantial tax abatement for eligible businesses with a relatively low bar for participation.

Power, water, and data infrastructure within the North Hillsboro Industrial Area provides a unique combination unmatched within the Portland area and beyond. The historically strong workforce already established in the area is growing with the help of significant new residential projects on the south end of Hillsboro and a growing amenity within the city's core area.

In Oregon, corporate business tax accounts for less than 3.5 percent of the gross state product, compared with 4.7 percent for California and 4.9 percent for Texas. Businesses will find that Oregon has designed their tax codes to attract and retain companies. As a result, Oregon's state tax structures rank in the top fifth of the nation for having a business-friendly tax structure.

# VANROSE TECHNOLOGY CENTER

2625 NE HUFFMAN RD, HILLSBORO, OR 97124

## THE DEVELOPMENT TEAM

### Trammell Crow Company

Trammell Crow Company (TCC) is a leading commercial real estate developer and wholly-owned subsidiary of CBRE Group, Inc. (NYSE:CBRE), a Fortune 500 and S&P 500 company headquartered in Dallas. Founded in 1948, TCC has developed or acquired 3,000 buildings valued at \$90 billion spanning more than 700 million square feet. As of March 31, 2025, TCC had \$18.3 billion of projects in process and \$12.8 billion in its pipeline. With 550 employees throughout the United States and Europe in 27 offices, the company serves users of and investors in office, industrial/logistics, healthcare, life science, data center and mixed-use projects, as well as multifamily residential through its operating subsidiary High Street Residential. For more information visit [www.TrammellCrow.com](http://www.TrammellCrow.com).



## GXO LOGISTICS BTS | HILLSBORO, OR

