

RETAIL / OFFICE SPACE AVAILABLE FOR LEASE

50 JOHN ELIOT SQUARE

Roxbury, Massachusetts



2,200 SF AVAILABLE

BUILDING FEATURES

- 5,477 SF Mixed Use Building
- Less than 15 minutes from Logan International Airport
- Prime corner locations, freshly remodeled vanilla shell, ground floor retail/office space

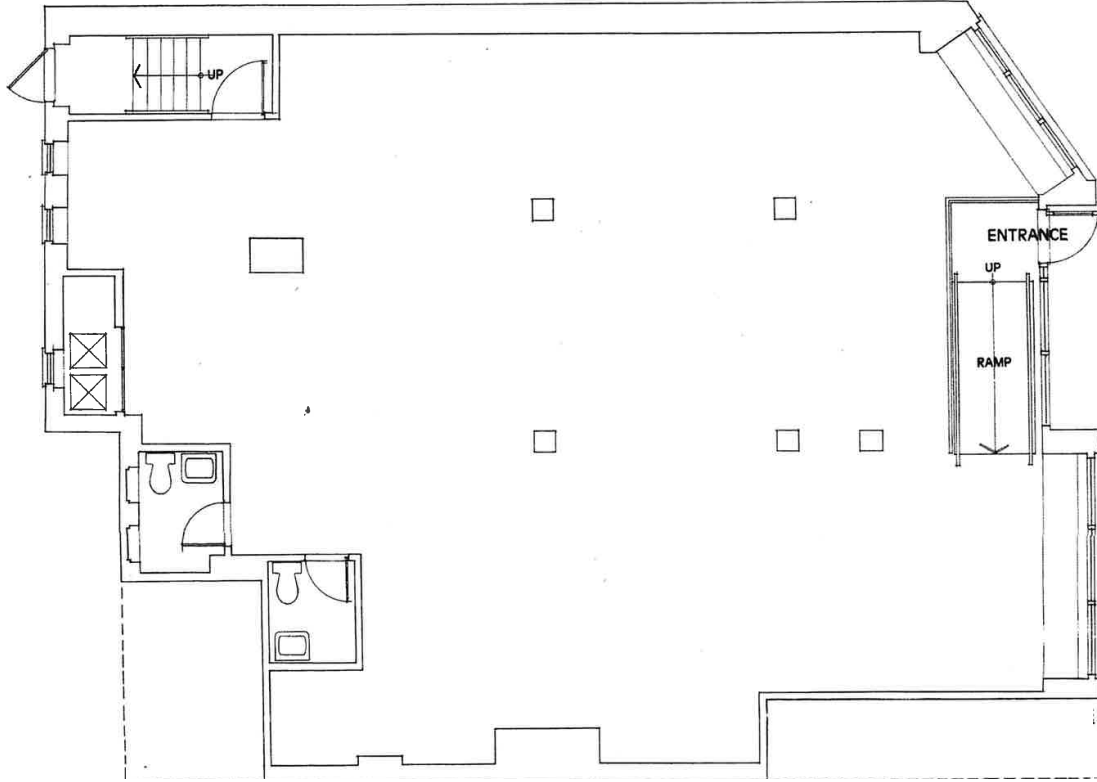


2,200 SF AVAILABLE FOR LEASE

50 JOHN ELIOT SQUARE

Roxbury, Massachusetts

FLOOR PLAN | 2,200 SF



BUILDING SPECIFICATIONS

AVAILABLE SPACE:	Floor One: 2,200 SF
AVAILABILITY:	Immediately
TERM:	Negotiable
AMENITIES:	Natural light, window frontage, 24 hour controlled access



For more information, please contact:

PETER EVANS

617.457.3402 | pevans@hunnemanre.com

BRIAN FOLEY

617.457.3311 | bfoley@hunnemanre.com



@2026 Hunneman. All rights reserved. All information has been obtained from sources believed reliable but no warranty or representation is verified for accuracy or completeness. Caution and independent investigation of property and information should be verified. Reliance on this information is at your own risk.