

1104 BRYANT STREET

FOR LEASE | NEWLY REMODELED FLEX SPACE

TCP
TOUCHSTONE
COMMERCIAL PARTNERS



WWW.TCPRE.COM

ZACH HAUPERT zhaupert@tcpre.com
D 415.539.1121 | C 415.812.1219

MICHAEL SANBERG msanberg@tcpre.com
D 415.539.1103 | C 415.697.6088

1104 BRYANT STREET

PROPERTY SUMMARY

ADDRESS

1104 Bryant Street, San Francisco, CA 94103

AVAILABLE SPACE

+/- 1,500 Square Feet

RENTAL RATE

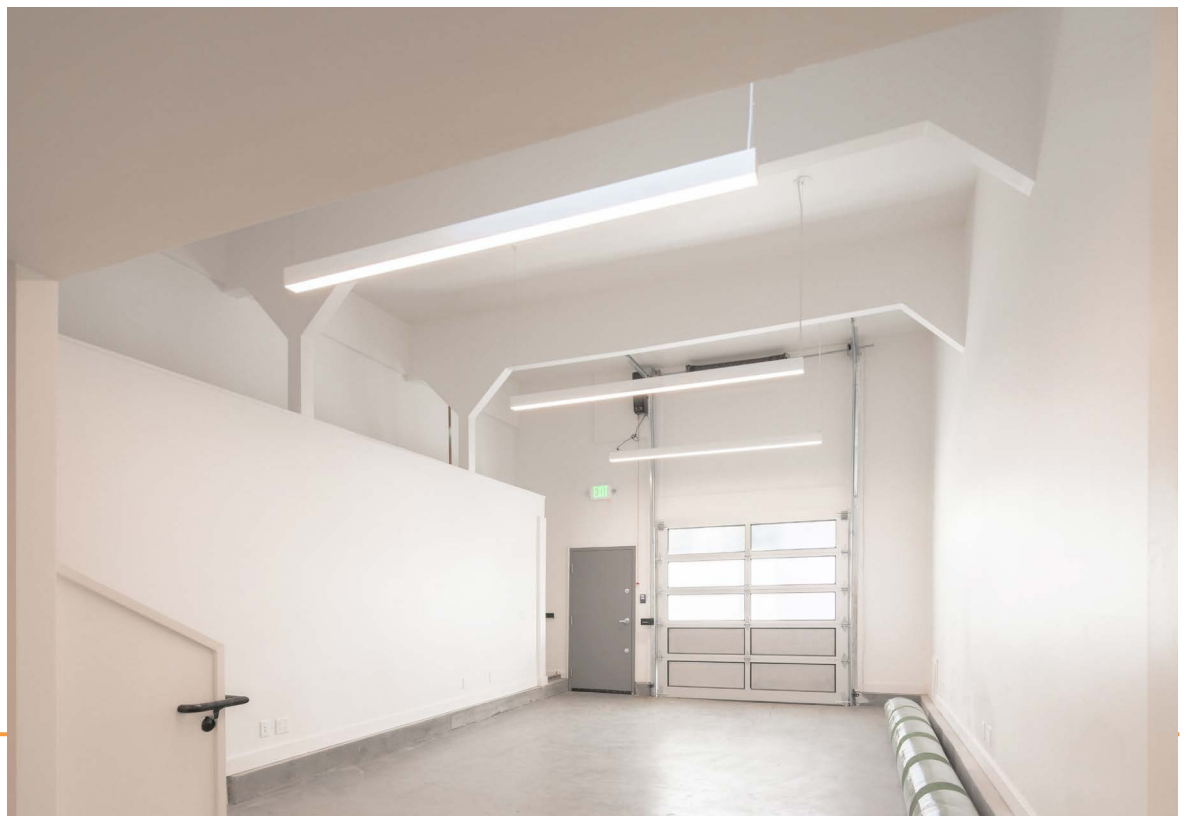
\$3,750 / Month, Industrial Gross

AVAILABLE

Immediately

BUILDING ATTRIBUTES

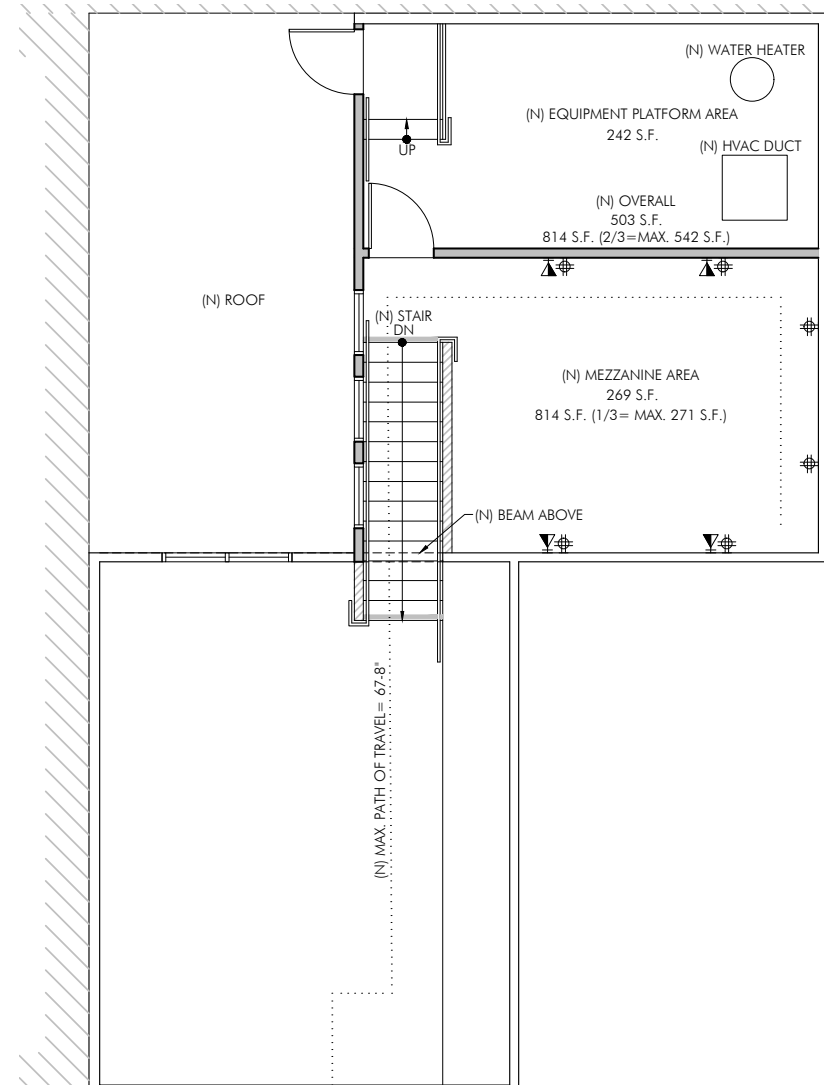
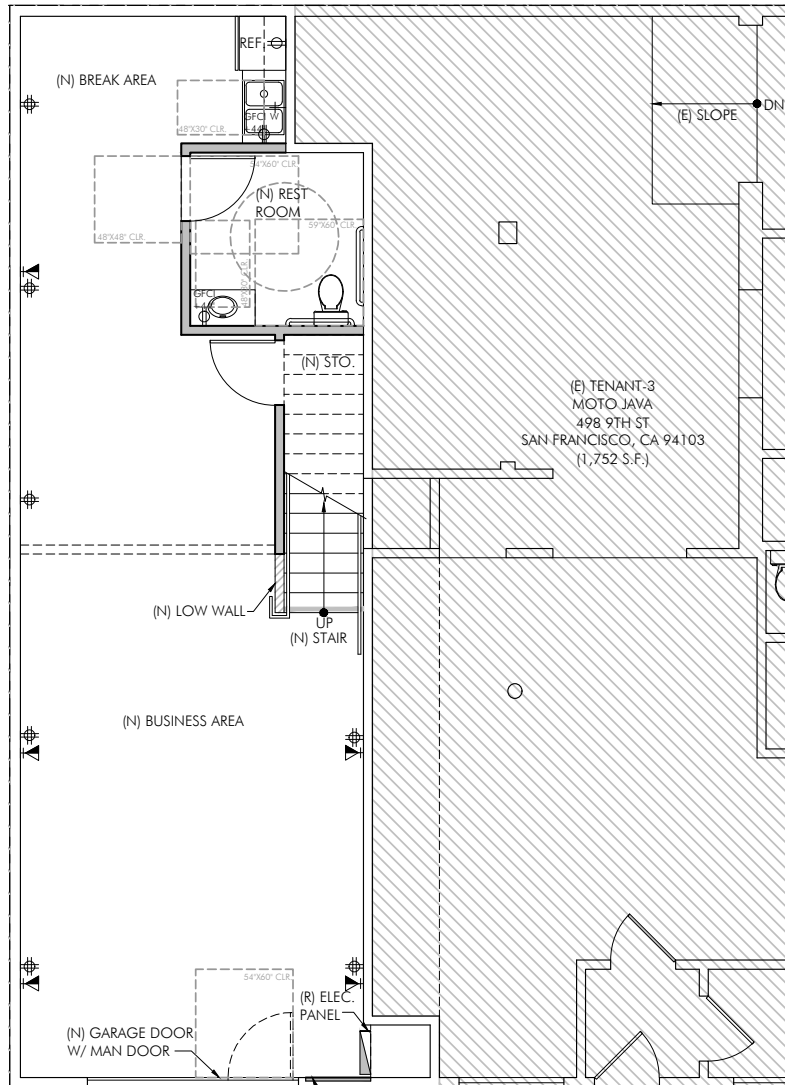
- + Newly Remodeled Flex Space in the Heart of SOMA
- + High Ceilings on Ground Level
- + Polished Concrete Floors
- + One (1) Man Door & Automatic Roll-Up Door
- + Kitchenette
- + One (1) ADA Restroom
- + One Conference Room with Hardwood Floors
- + Exclusive Roof Deck



1104 BRYANT STREET

Floor Plans

+/- 1,500 Square Feet



1104 BRYANT STREET

LOCATION OVERVIEW

Desirable South of Market location, walkable to many nearby amenities and to the Mission District.



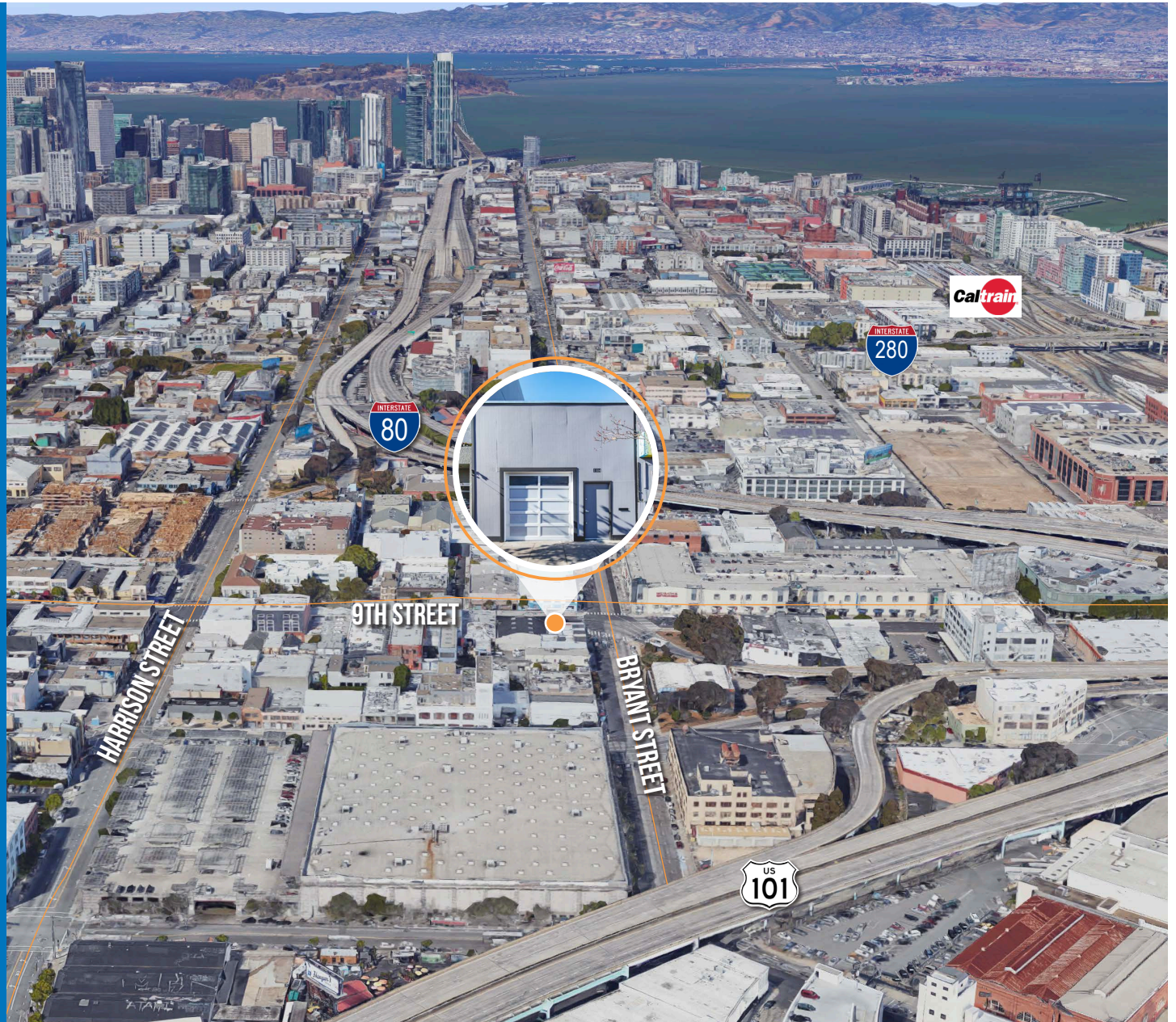
15 MIN to Civic Center Bart
20 MIN to 4th St. Caltrain



05 MIN to Potrero Hill
07 MIN to Mission District
10 MIN to Financial District



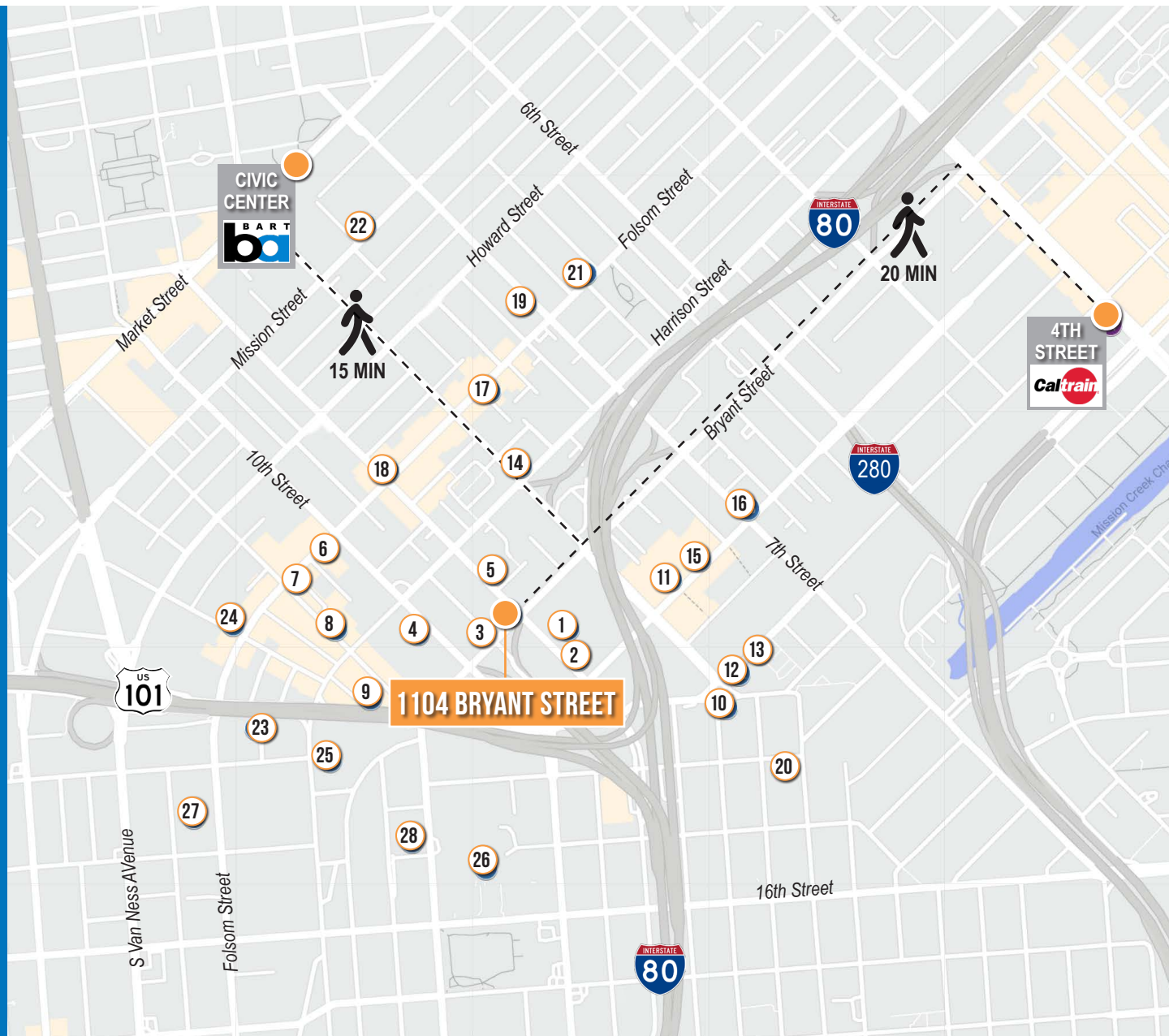
02 MIN to 101 On-Ramp
03 MIN to 80 On-Ramp
04 MIN to 280 On-Ramp

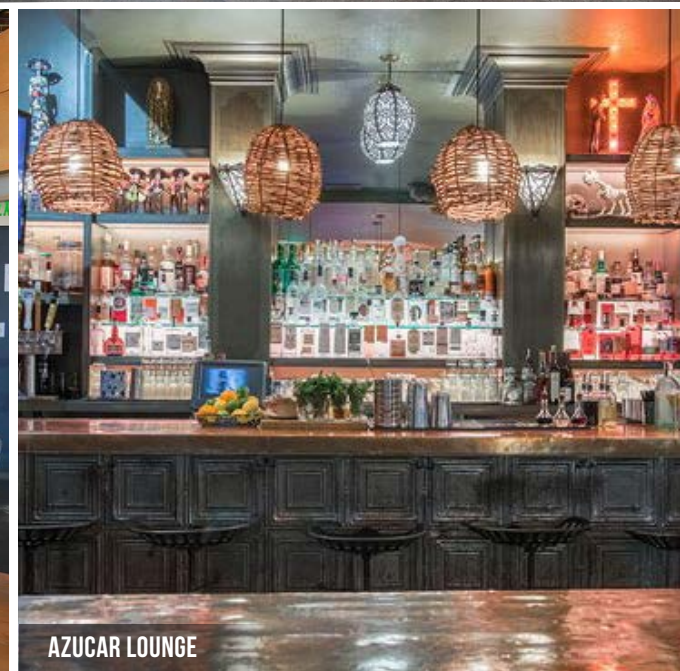


1104 BRYANT STREET

NEARBY AMENITIES

- 1..... Trader Joe's
- 2..... Peet's Coffee
- 3..... Vaulins Taproom Wine Restaurant
- 4..... Costco Wholesale
- 5..... Clayroom SoMa
- 6..... Sextant Coffee Roasters
- 7..... Basil Canteen
- 8..... DNA Pizza
- 9..... Southern Accent Food Truck
- 10..... Niku Steakhouse
- 11..... Bellota
- 12..... Starbucks
- 13..... Okane
- 14..... AK Subs
- 15..... REI
- 16..... Mars Bar & Restaurant
- 17..... Basil
- 18..... Azúcar Lounge
- 19..... Sightglass Coffee
- 20..... Showplace East
- 21..... Deli Board
- 22..... City Beer Store
- 23..... Rainbow Grocery
- 24..... The Willows
- 25..... Best Buy
- 26..... Safeway
- 27..... Foods Co.
- 28..... Sports Basement Bryant Street





1104 BRYANT
STREET



Corp. Lic. 01112906
www.tcpre.com

ZACH HAUPERT

D 415.539.1121 C 415.812.1219
zhaupert@tcpre.com DRE # 01822907

MICHAEL SANBERG

D 415.539.1103 C 415.697.6088
msanberg@tcpre.com DRE # 01930041

This document has been prepared by Touchstone Commercial Partners for advertising and general information only. Touchstone Commercial Partners makes no guarantees, representations or warranties of any kind, expressed or implied, regarding the information including, but not limited to, warranties of content, accuracy and reliability. Any interested party should undertake their own inquiries as to the accuracy of the information. Touchstone Commercial Partners excludes unequivocally all inferred or implied terms, conditions and warranties arising out of this document and excludes all liability for loss and damages arising there from. This publication is the copyrighted property of Touchstone Commercial Partners and/or its licensor(s). ©2025. All rights reserved.