

16 North 9th Avenue

Hopkins | MN 55343

Space Highlights

- + Available Spaces:
 - 1st Floor: ~ 7,000 SF (demisable)
 - 2nd Floor: ~ 7,000 SF (demisable)
 - 3rd Floor: ~ 7,000 SF (demisable)
- + Use: Office, Retail & Creative
- + Asking Lease Rate: \$12.00 / SF
- + Tax & CAM: \$10.23 / SF (2025 Estimate)
- + Sale Price: Negotiable

Building Details

- + Total Size: ~ 42,238 SF (includes ~14,000 SF lower level)
- + Lot Size: .49 acres
- + Parking: 75 spaces
- + Current Zoning: Commercial Preferred
- + Location: Walkable suburban location with 10+ restaurants within 2 blocks
- + Existing Occupants: US Bank Branch
- + Branding: Prominent building signage available



1/2 block off Mainstreet in Downtown Hopkins. Flexible floorplates with ability to add outdoor amenity spaces including a rooftop. Prominent building signage/branding potential.

16 North 9th Avenue
Hopkins | MN 55343

Aerial Map & Neighboring Amenities

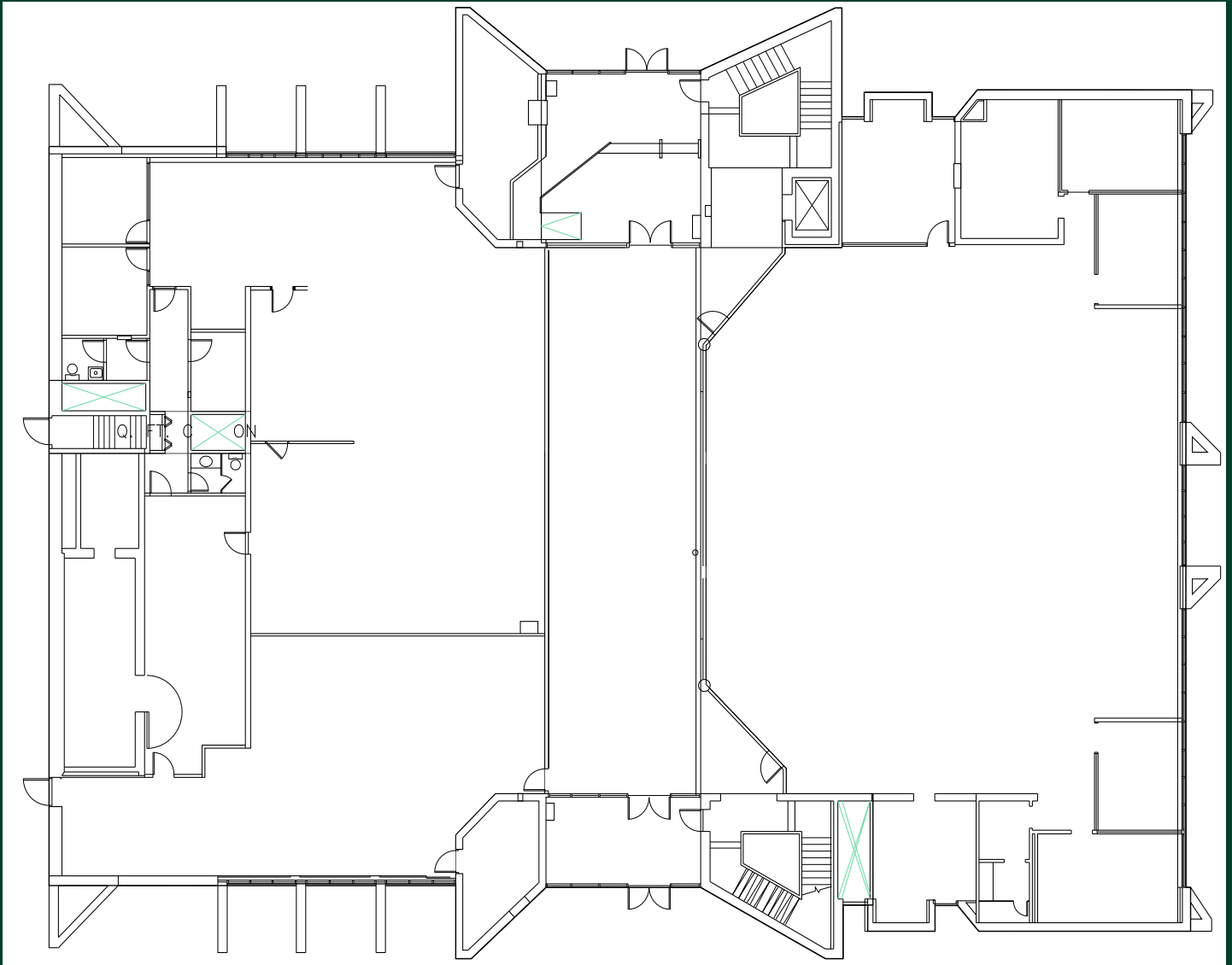


16 North 9th Avenue

Hopkins | MN 55343

Floor Plan

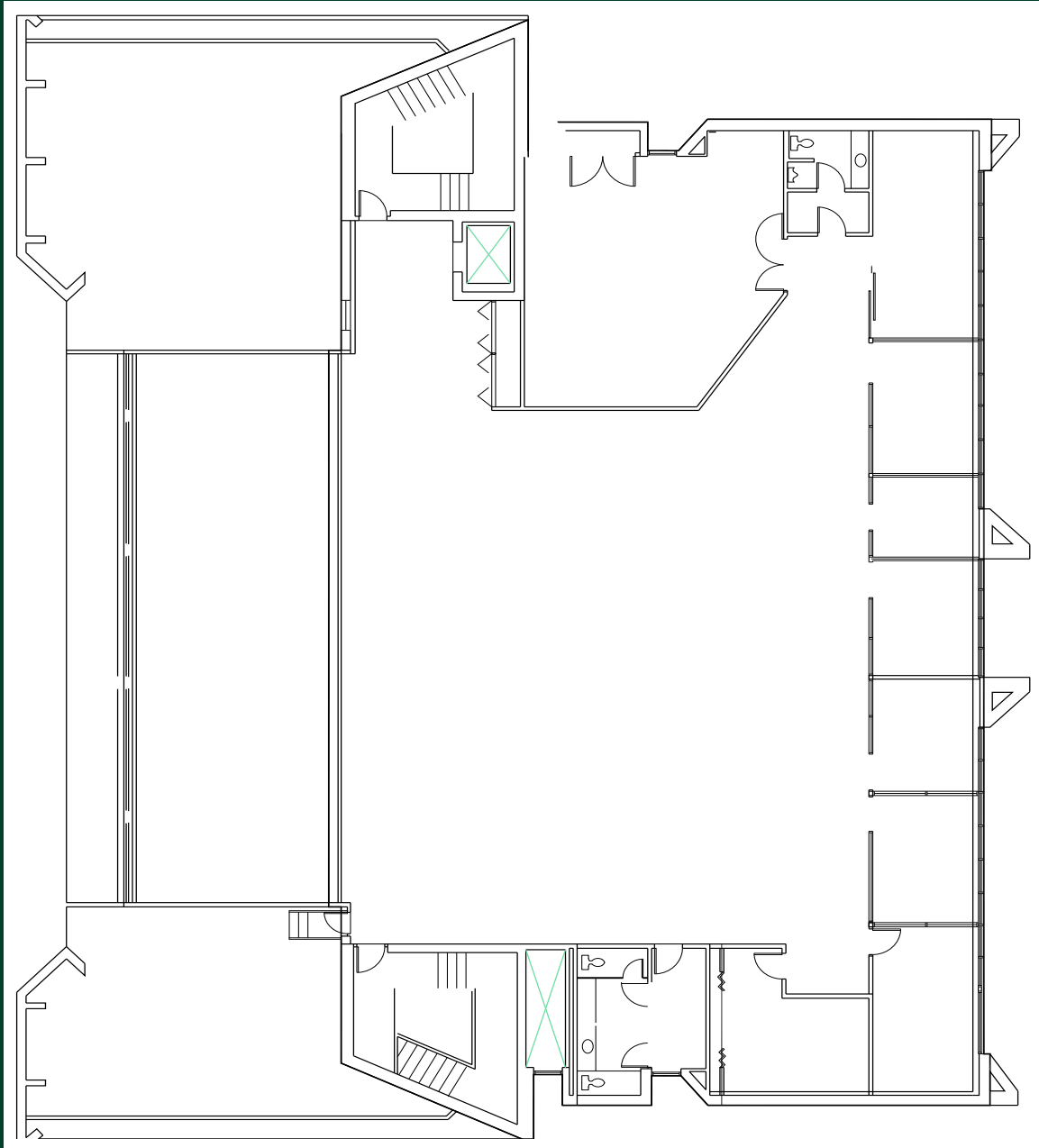
1st Floor: ~7,000 SF



16 North 9th Avenue
Hopkins | MN 55343

Floor Plan

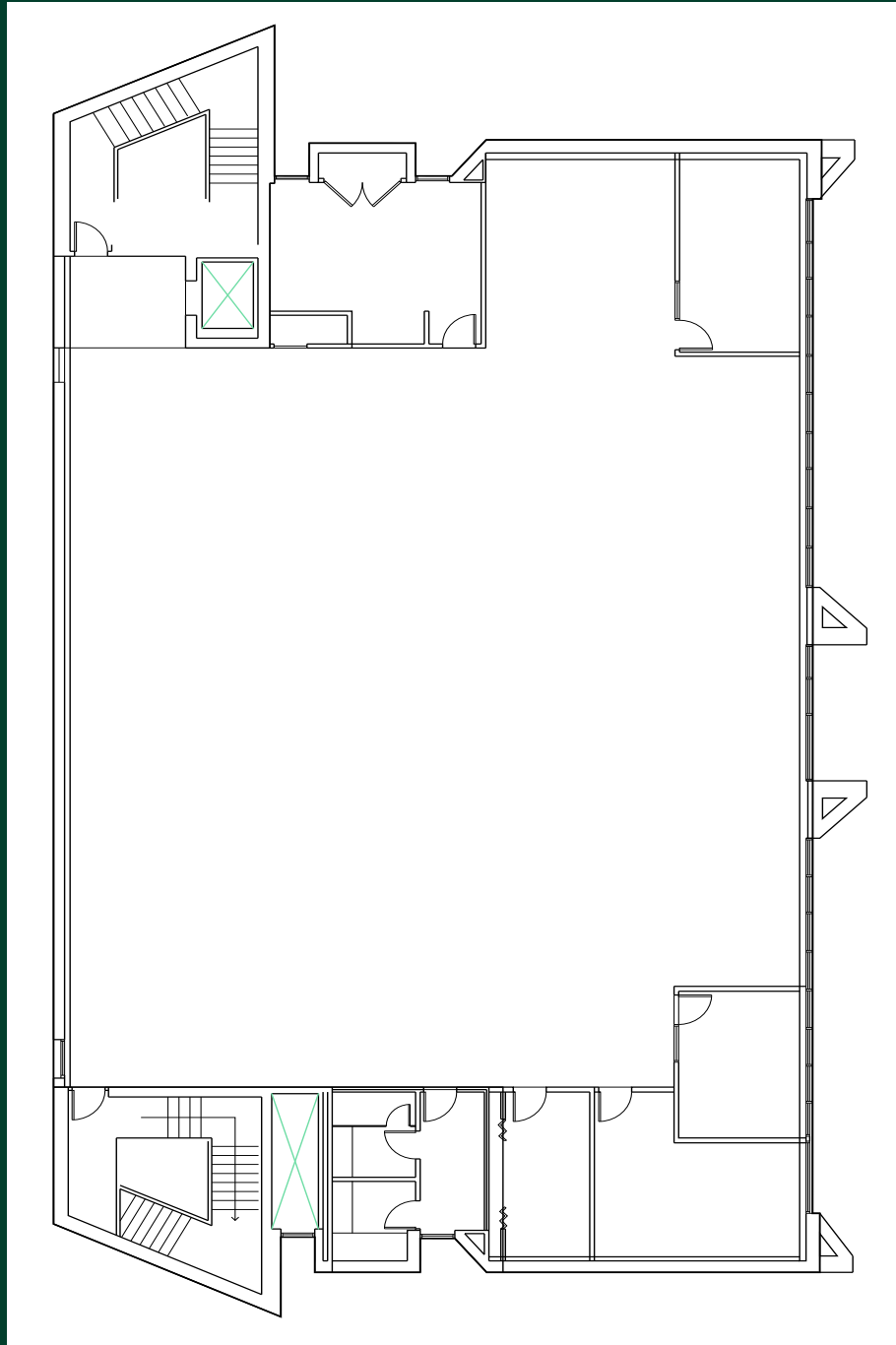
2nd Floor: ~7,000 SF



16 North 9th Avenue
Hopkins | MN 55343

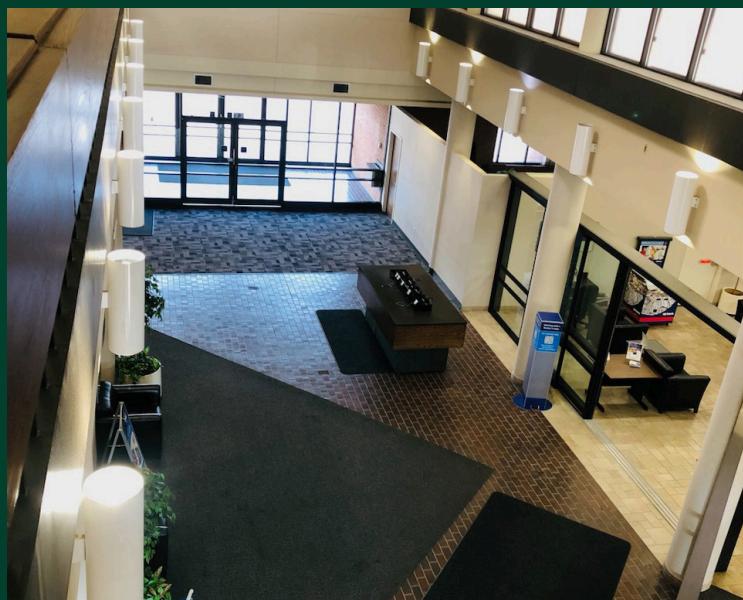
Floor Plan

3rd Floor: ~7,000 SF



16 North 9th Avenue
Hopkins | MN 55343

Interior Photos



Contact Us

Neil Kolatkar
First Vice President
+1 612 730 9310
Neil.Kolatkar@cbre.com

© 2025 CBRE, Inc. All rights reserved. This information has been obtained from sources believed reliable, but has not been verified for accuracy or completeness. You should conduct a careful, independent investigation of the property and verify all information. Any reliance on this information is solely at your own risk. CBRE and the CBRE logo are service marks of CBRE, Inc. All other marks displayed on this document are the property of their respective owners, and the use of such logos does not imply any affiliation with or endorsement of CBRE. Photos herein are the property of their respective owners. Use of these images without the express written consent of the owner is prohibited.

CBRE