



512 WESTLINE DRIVE  
**ALAMEDA, CA 94501**

---

MEDICAL OFFICE SUITES FOR LEASE  
BRAND NEW IMPROVEMENTS



512 WESTLINE DR., ALAMEDA, CA 94501

# BUILDING HIGHLIGHTS

Full Building Renovation Completed in 2025

Turnkey Medical Suites from 1,172-1,427 SF

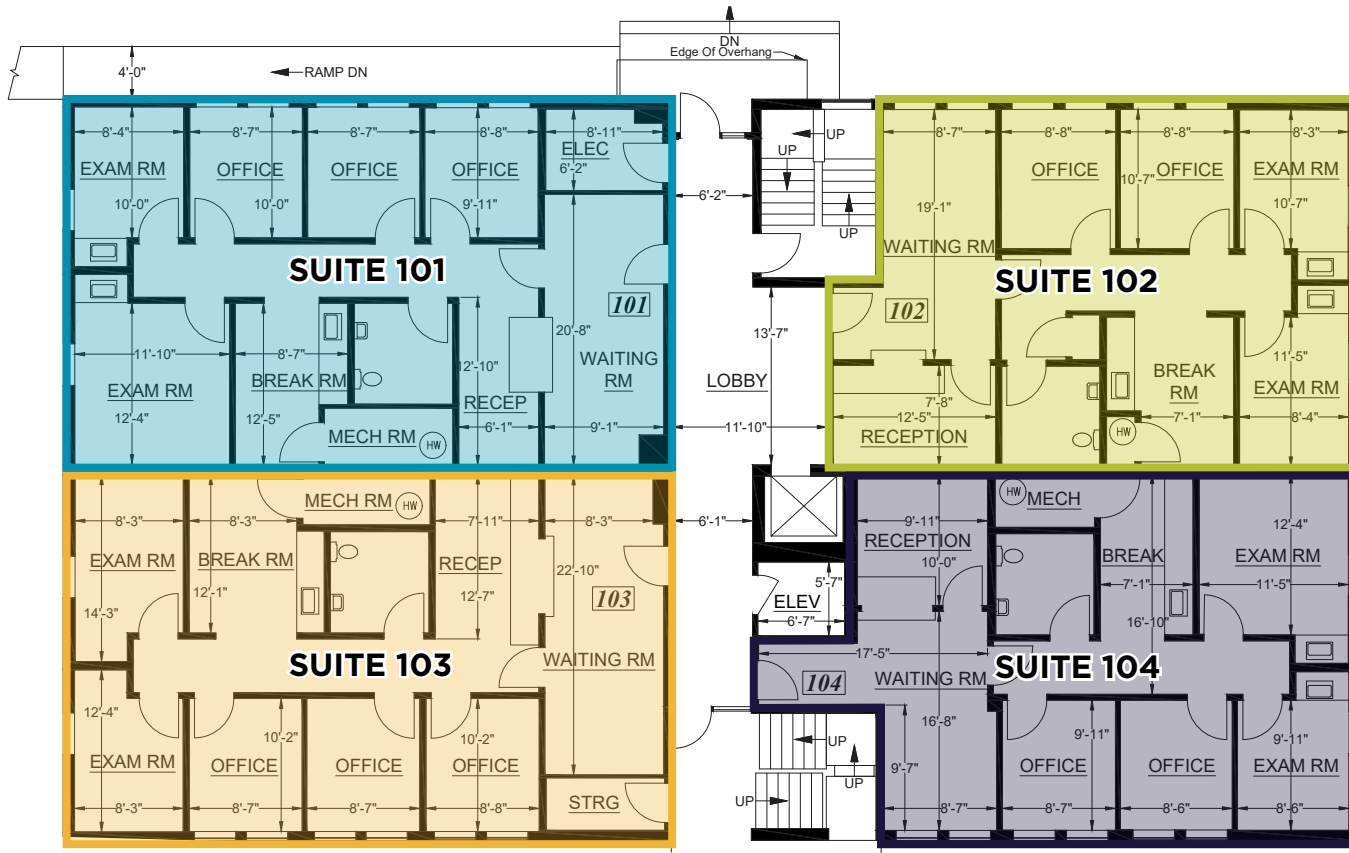
Thoughtful, Efficient Layouts with High End Finishes for Medical, Dental, or Office Uses

All Suites have Custom Cabinetry, Soundproofed Interiors, Individual HVAC Units, and Pre-Plumbed Exam Rooms

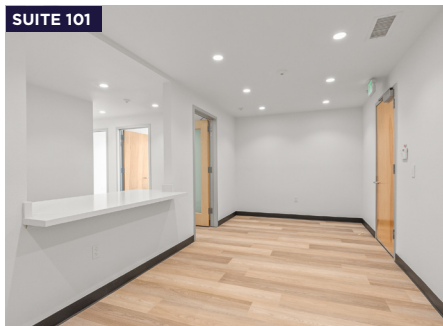
High Speed Fiber Internet, Alarm System, Secure Key Fob entry

On-Site Parking

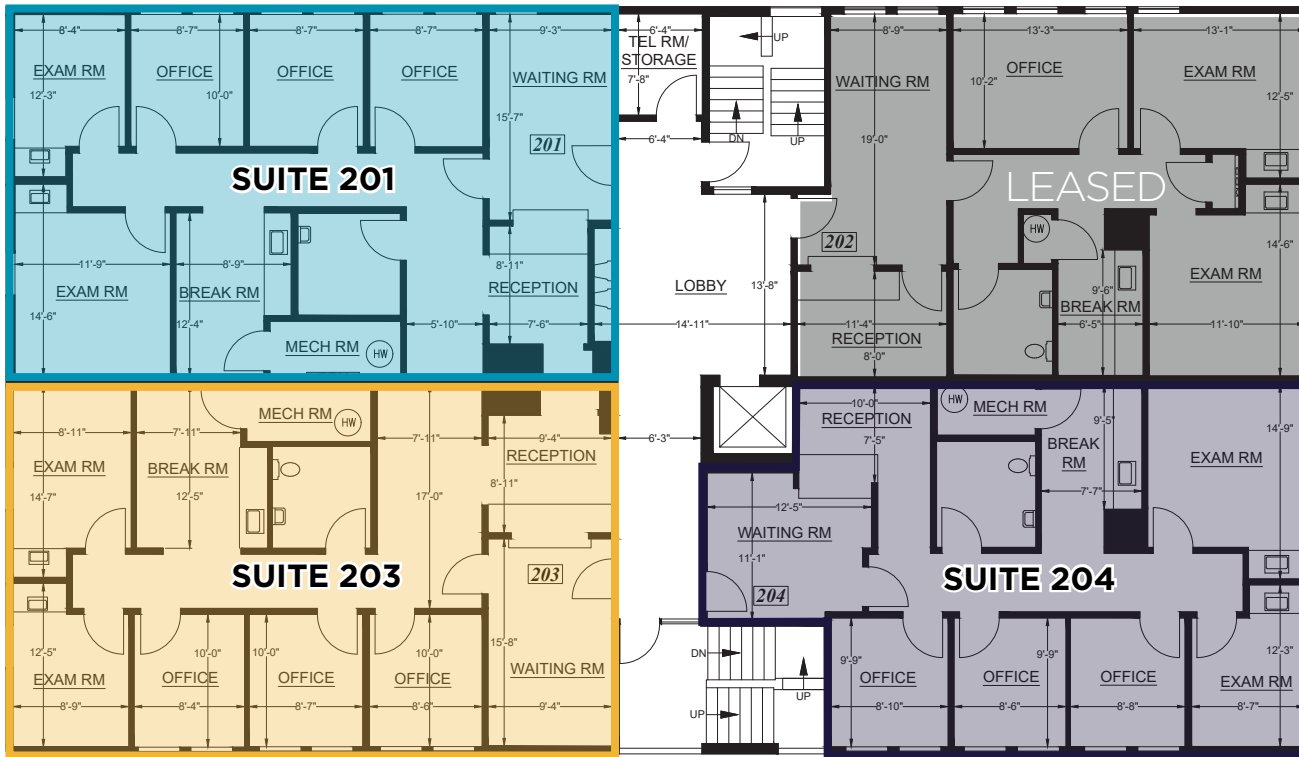




SUITE:	SQUARE FEET:
101	1,361 SF
102	1,194 SF
103	1,384 SF
104	1,212 SF



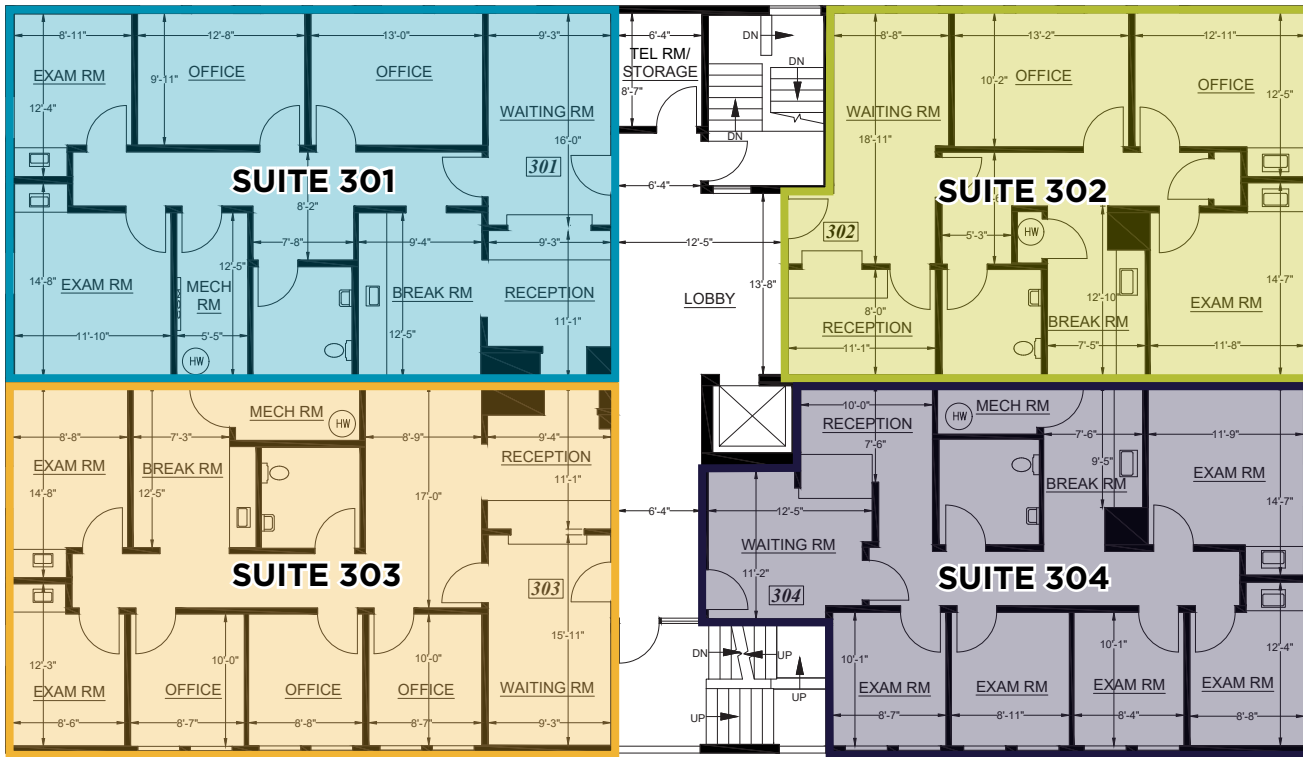
# FLOOR PLAN FIRST FLOOR



SUITE:	SQUARE FEET:
201	1,361 SF
203	1,384 SF
204	1,212 SF



# FLOOR PLAN SECOND FLOOR



SUITE:	SQUARE FEET:
301	1,361 SF
302	1,194 SF
303	1,384 SF
304	1,212 SF



# FLOOR PLAN THIRD FLOOR

# PROXIMITY MAP

1. Safeway
2. Trader Joe's
3. TJ Maxx
4. Kohl's
5. Old Navy
6. Crunch Fitness
7. Burma Superstar
8. Park Station Beer Garden
9. Highwire Coffee
10. House of Bagels
11. Safeway
12. Target
13. Michaels
14. In N Out
15. Chipotle
16. Habit Burger





# CONTACT INFORMATION

**PLEASE CONTACT BROKER FOR LEASE RATES OR TO TOUR:**

**ELIZABETH BOTT**

Mobile: +1 408 768 7110

Direct: +1 510 891 5826

[elizabeth.bott@cushwake.com](mailto:elizabeth.bott@cushwake.com)

CA License #02163723



©2026 Cushman & Wakefield. All rights reserved. The information contained in this communication is strictly confidential. This information has been obtained from sources believed to be reliable but has not been verified. NO WARRANTY OR REPRESENTATION, EXPRESS OR IMPLIED, IS MADE AS TO THE CONDITION OF THE PROPERTY (OR PROPERTIES) REFERENCED HEREIN OR AS TO THE ACCURACY OR COMPLETENESS OF THE INFORMATION CONTAINED HEREIN, AND SAME IS SUBMITTED SUBJECT TO ERRORS, OMISSIONS, CHANGE OF PRICE, RENTAL OR OTHER CONDITIONS, WITHDRAWAL WITHOUT NOTICE, AND TO ANY SPECIAL LISTING CONDITIONS IMPOSED BY THE PROPERTY OWNER(S). ANY PROJECTIONS, OPINIONS OR ESTIMATES ARE SUBJECT TO UNCERTAINTY AND DO NOT SIGNIFY CURRENT OR FUTURE PROPERTY PERFORMANCE. PD-205064-V1