

RETAIL / OFFICE | FOR SALE

2705 N Harbor City Blvd
Melbourne, FL 32935



**MVP
SALES
GROUP**

Investments & Development

of



WATERMAN
REAL ESTATE

Meili Viera Porter

Broker, MBA, MSRED
(321) 848-7344
MeiliViera@icloud.com



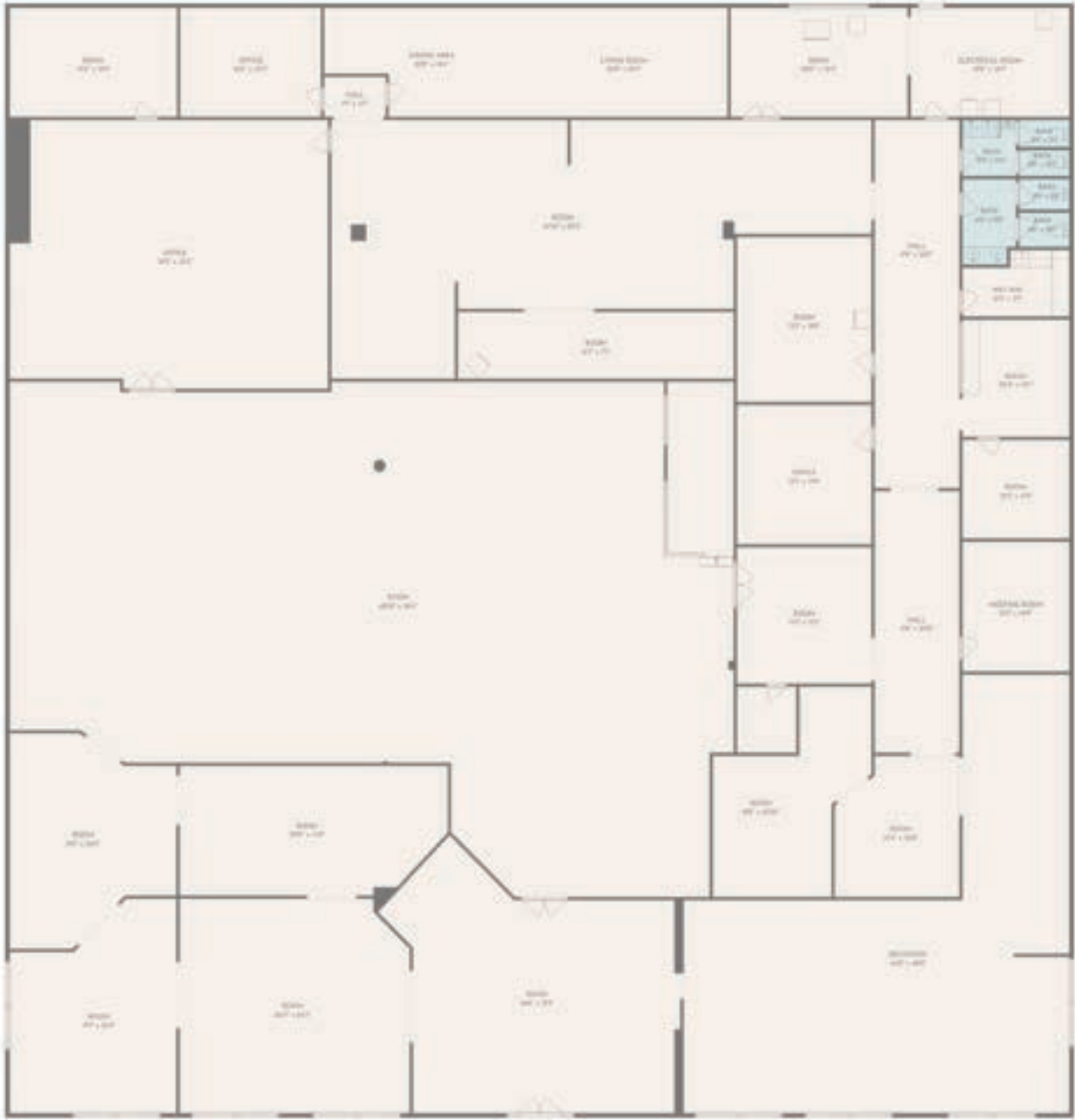
OFFERING HIGHLIGHTS

2705 N HARBOR CITY BLVD MELBOURNE FL 32935

- PRICE - \$1,850,000
- Free Standing Building with Great Visibility.
- 15,000 Sqft
- 1.3 Acres
- 35 Parking Spots
- Zoning - C1-Commercial/Retail/Office or Medical Use
- 14 Foot Ceilings
- Large Store Front Windows
- Large Monument Sign on US1
- Block Construction
- High Traffic Counts
- Outstanding Location



FLOOR PLAN

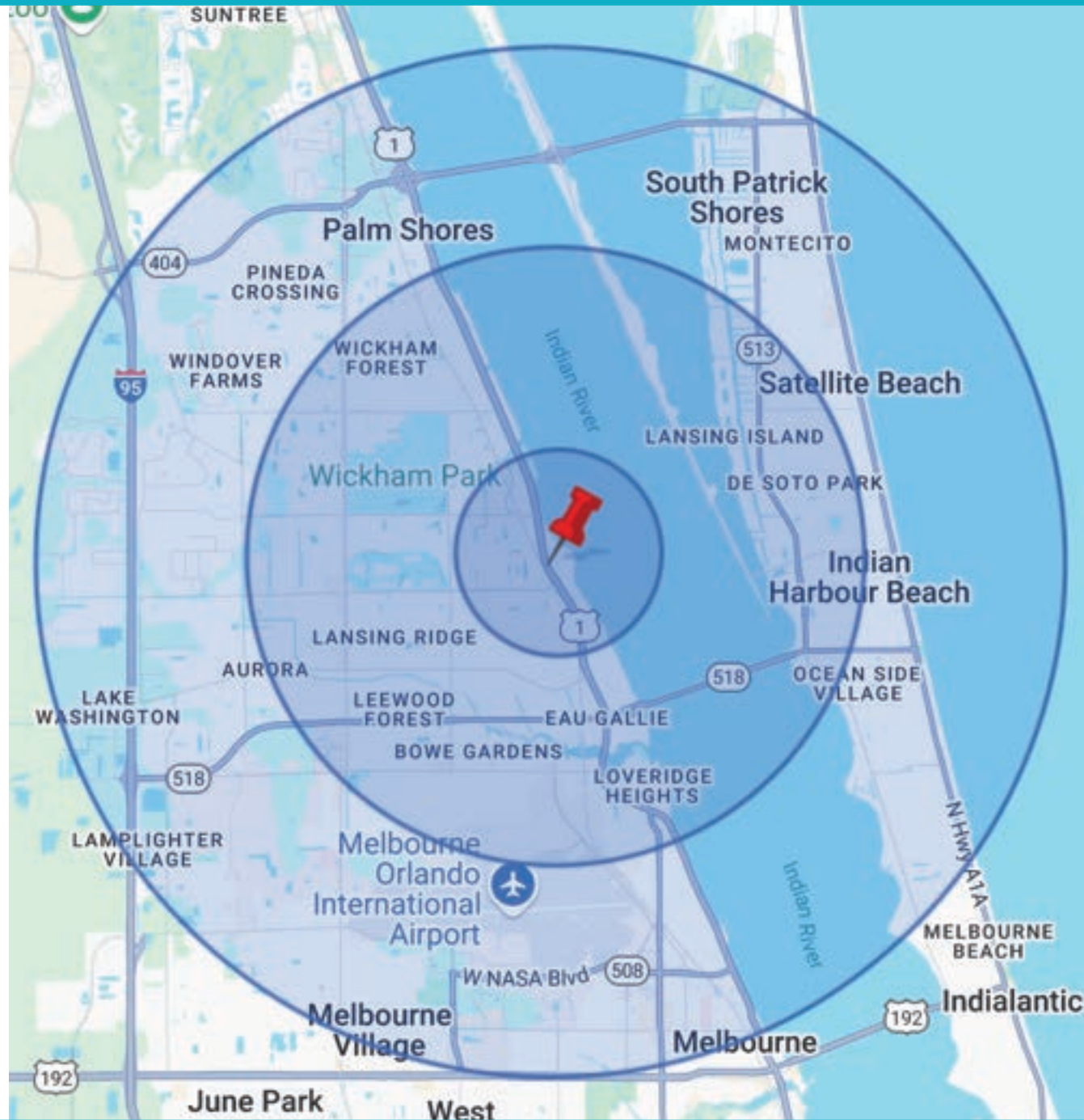


WATERMAN
REAL ESTATE

This information has been secured from sources we believe to be reliable, but we make no representations or warranties, expressed or implied, as to the accuracy of the information. References to square footage or age are approximate. Buyer must verify the information and bears all risk for any inaccuracies. Any projections, opinions, assumptions or estimates used herein are for example purposes only and do not represent the current or future performance of the property. Buyer is responsible for conducting his/her own investigation of all matters affecting the value of the property. By accepting this Marketing Brochure you agree to release Waterman Real Estate and hold it harmless from any kind of claim, cost, expense, or liability arising out of your investigation and/or purchase of this property.

DEMOGRAPHICS

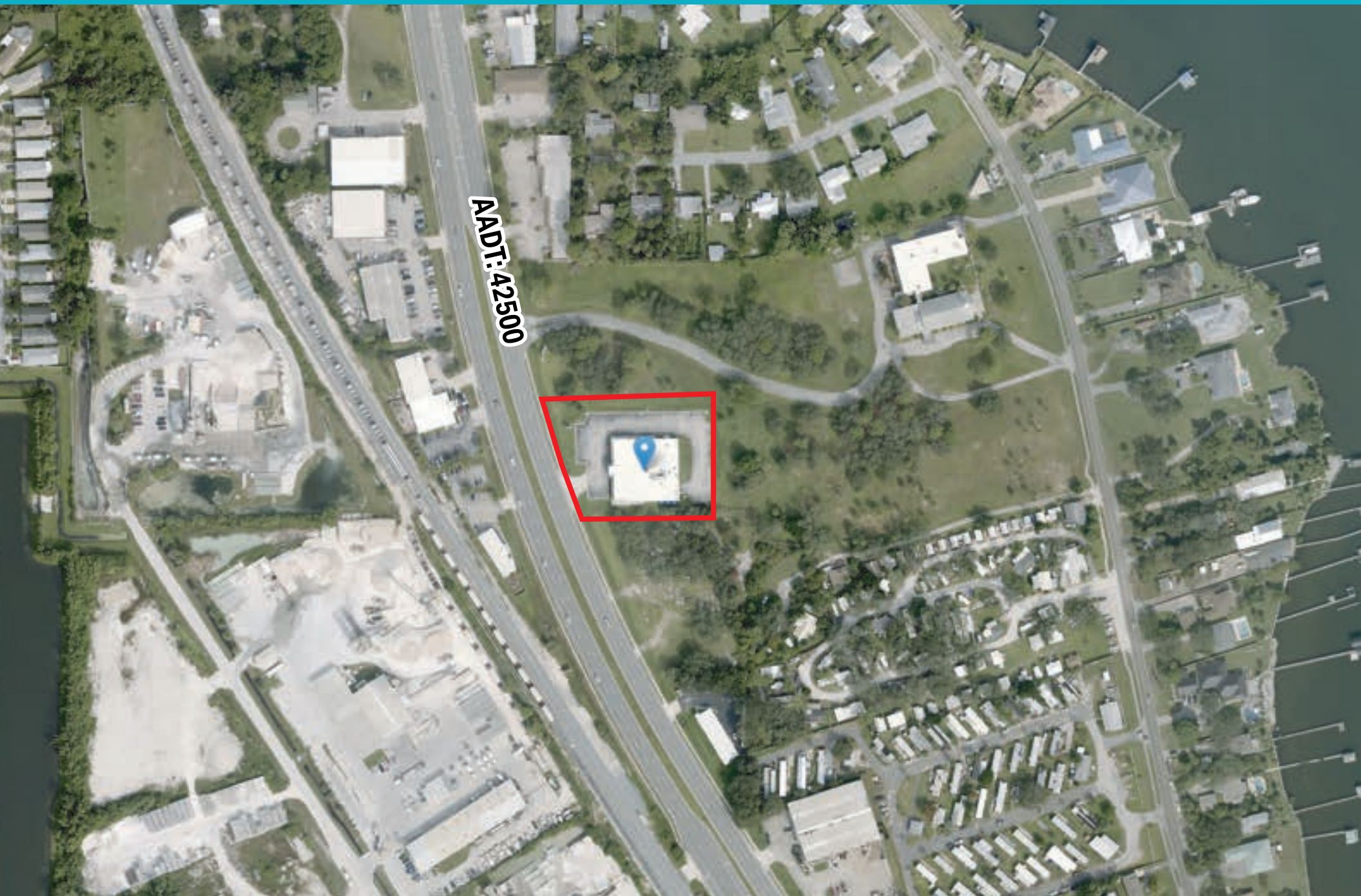
	1 MILE	3 MILE	5 MILE
2024 Total Population	7,620	57,568	115,801
2029 Population	8,244	62,533	126,261
Pop Growth 2024-2029	+ 8.19%	+ 8.62%	+ 9.03%
Average Age	44	44	45
2024 Total Households	3,564	25,189	50,255
HH Growth 2024-2029	+ 7.97%	+ 8.37%	+ 8.87%
Median Household Inc	\$58,541	\$66,250	\$72,676
Avg Household Size	2.10	2.20	2.20
2024 Avg HH Vehicles	2.00	2.00	2.00
Median Home Value	\$230,237	\$262,905	\$298,450
Median Year Built	1984	1981	1982



WATERMAN
REAL ESTATE

This information has been secured from sources we believe to be reliable, but we make no representations or warranties, expressed or implied, as to the accuracy of the information. References to square footage or age are approximate. Buyer must verify the information and bears all risk for any inaccuracies. Any projections, opinions, assumptions or estimates used herein are for example purposes only and do not represent the current or future performance of the property. Buyer is responsible for conducting his/her own investigation of all matters affecting the value of the property. By accepting this Marketing Brochure you agree to release Waterman Real Estate and hold it harmless from any kind of claim, cost, expense, or liability arising out of your investigation and/or purchase of this property.

AERIAL MAP & TRAFFIC COUNT



WATERMAN
REAL ESTATE

This information has been secured from sources we believe to be reliable, but we make no representations or warranties, expressed or implied, as to the accuracy of the information. References to square footage or age are approximate. Buyer must verify the information and bears all risk for any inaccuracies. Any projections, opinions, assumptions or estimates used herein are for example purposes only and do not represent the current or future performance of the property. Buyer is responsible for conducting his/her own investigation of all matters affecting the value of the property. By accepting this Marketing Brochure you agree to release Waterman Real Estate and hold it harmless from any kind of claim, cost, expense, or liability arising out of your investigation and/or purchase of this property.

PHOTOS



WATERMAN
REAL ESTATE

This information has been secured from sources we believe to be reliable, but we make no representations or warranties, expressed or implied, as to the accuracy of the information. References to square footage or age are approximate. Buyer must verify the information and bears all risk for any inaccuracies. Any projections, opinions, assumptions or estimates used herein are for example purposes only and do not represent the current or future performance of the property. Buyer is responsible for conducting his/her own investigation of all matters affecting the value of the property. By accepting this Marketing Brochure you agree to release Waterman Real Estate and hold it harmless from any kind of claim, cost, expense, or liability arising out of your investigation and/or purchase of this property.

PHOTOS



WATERMAN
REAL ESTATE

This information has been secured from sources we believe to be reliable, but we make no representations or warranties, expressed or implied, as to the accuracy of the information. References to square footage or age are approximate. Buyer must verify the information and bears all risk for any inaccuracies. Any projections, opinions, assumptions or estimates used herein are for example purposes only and do not represent the current or future performance of the property. Buyer is responsible for conducting his/her own investigation of all matters affecting the value of the property. By accepting this Marketing Brochure you agree to release Waterman Real Estate and hold it harmless from any kind of claim, cost, expense, or liability arising out of your investigation and/or purchase of this property.

PHOTOS



WATERMAN
REAL ESTATE

This information has been secured from sources we believe to be reliable, but we make no representations or warranties, expressed or implied, as to the accuracy of the information. References to square footage or age are approximate. Buyer must verify the information and bears all risk for any inaccuracies. Any projections, opinions, assumptions or estimates used herein are for example purposes only and do not represent the current or future performance of the property. Buyer is responsible for conducting his/her own investigation of all matters affecting the value of the property. By accepting this Marketing Brochure you agree to release Waterman Real Estate and hold it harmless from any kind of claim, cost, expense, or liability arising out of your investigation and/or purchase of this property.

PHOTOS



WATERMAN
REAL ESTATE

This information has been secured from sources we believe to be reliable, but we make no representations or warranties, expressed or implied, as to the accuracy of the information. References to square footage or age are approximate. Buyer must verify the information and bears all risk for any inaccuracies. Any projections, opinions, assumptions or estimates used herein are for example purposes only and do not represent the current or future performance of the property. Buyer is responsible for conducting his/her own investigation of all matters affecting the value of the property. By accepting this Marketing Brochure you agree to release Waterman Real Estate and hold it harmless from any kind of claim, cost, expense, or liability arising out of your investigation and/or purchase of this property.



EXCLUSIVELY OFFERED BY



**MVP
SALES
GROUP**

Investments & Development

of



WATERMAN
REAL ESTATE
INC.

Meili Viera Porter

Broker, MBA, MSRED
(321) 848-7344
MeiliViera@icloud.com

