

**OFFICE /
RESIDENTIAL
PROPERTY
FOR SALE**



508 ST. PAUL STREET BALTIMORE, MD

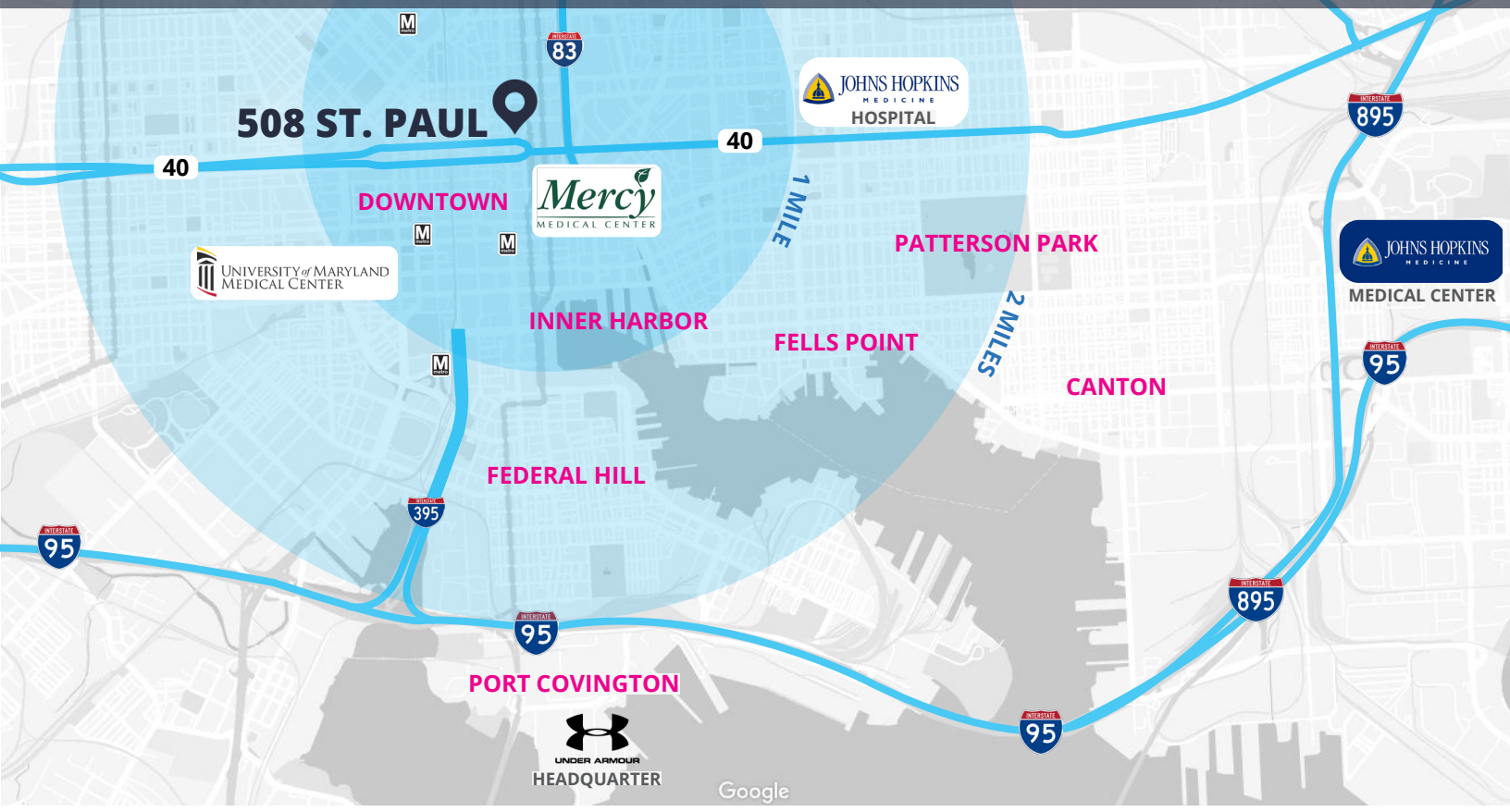
- 4,953 SF
- 4-story corner building in Downtown
- Multi-purpose use
- 15 minute walk to Inner Harbor
- In-place billboard revenue

MAREK RICH
202-716-5070
mrich@scheerpartners.com

NICK PUGH
202-683-7916
mpugh@scheerpartners.com

 **Scheer Partners**
A Reputation for Results

IN THE HEART OF DOWNTOWN BALTIMORE



BUILDING HIGHLIGHTS



- 15 minute walk to Inner Harbor



- 15 minute walk to State Center Metro Station
- 10 minute walk to Charles Center Metro Station



- 5 minute walk to Mercy Medical Center

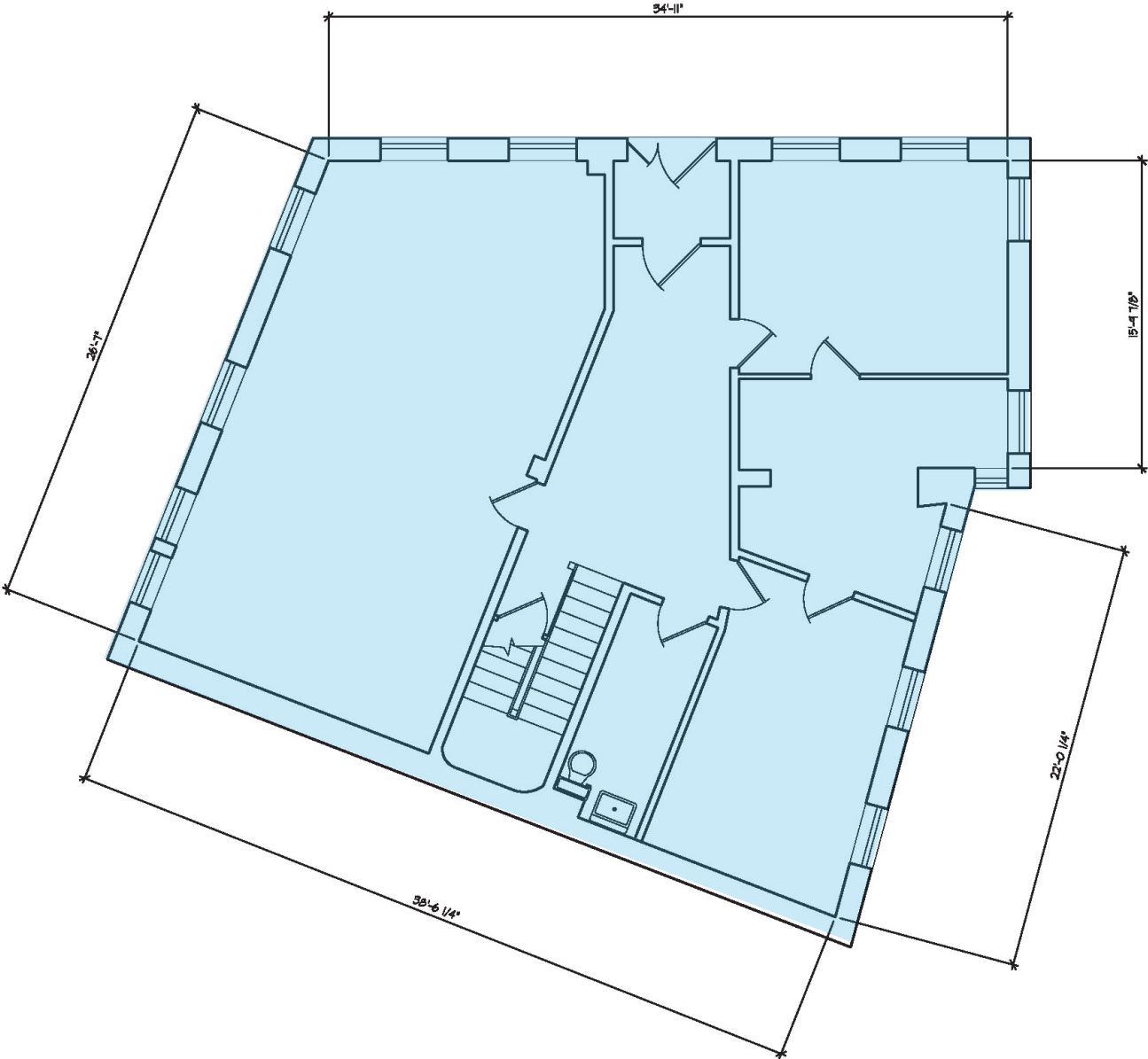


- Excellent access to major thoroughfares (I-95, I-83 & RT 40)
- Walker's Paradise - Walk Score: 99
- Rider's Paradise - Transit Score: 100



- Very Bikeable - Bike Score: 73

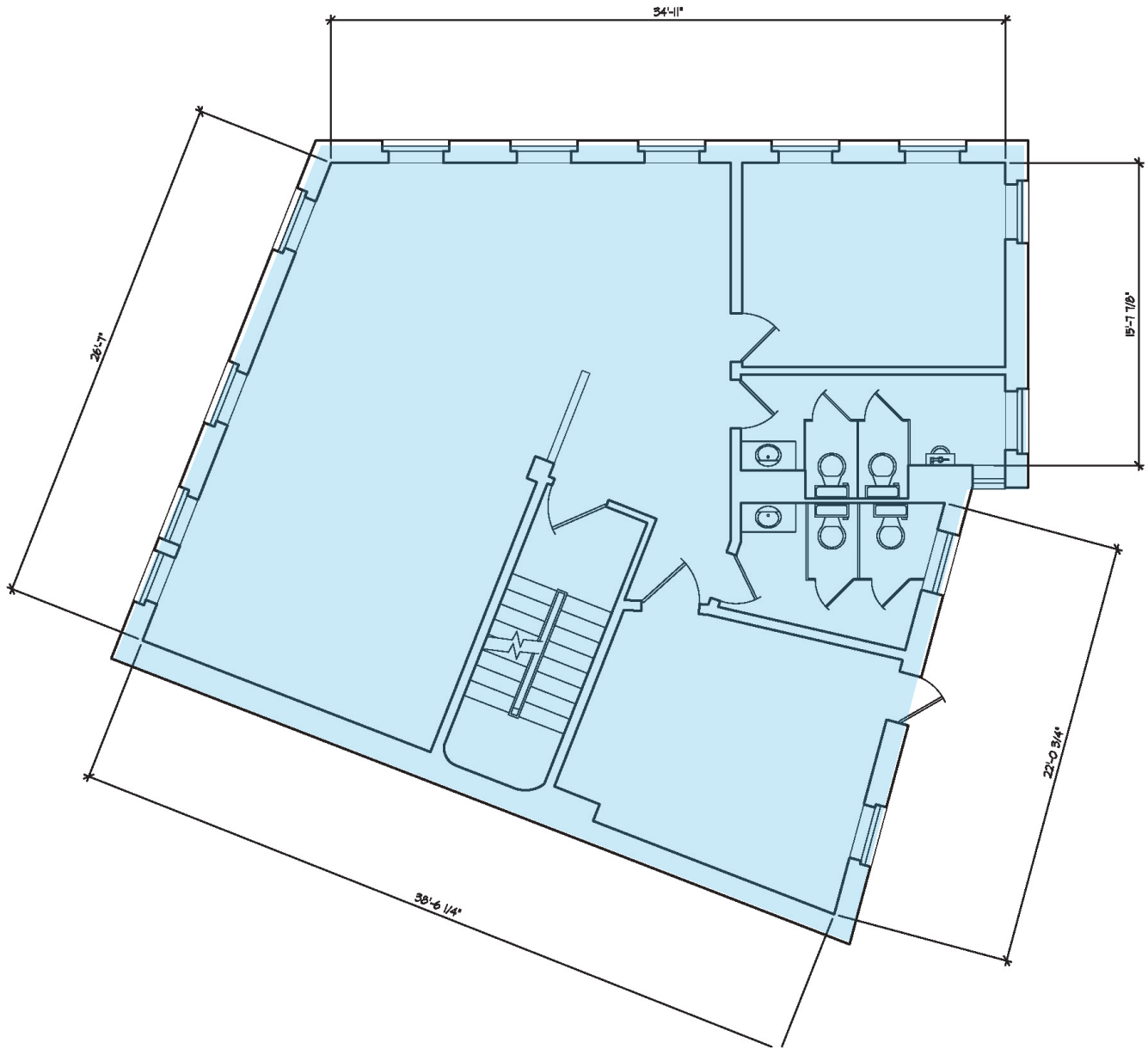
FIRST FLOOR



MAREK RICH
202-716-5070
mrich@scheerpartners.com

NICK PUGH
202-683-7916
mpugh@scheerpartners.com

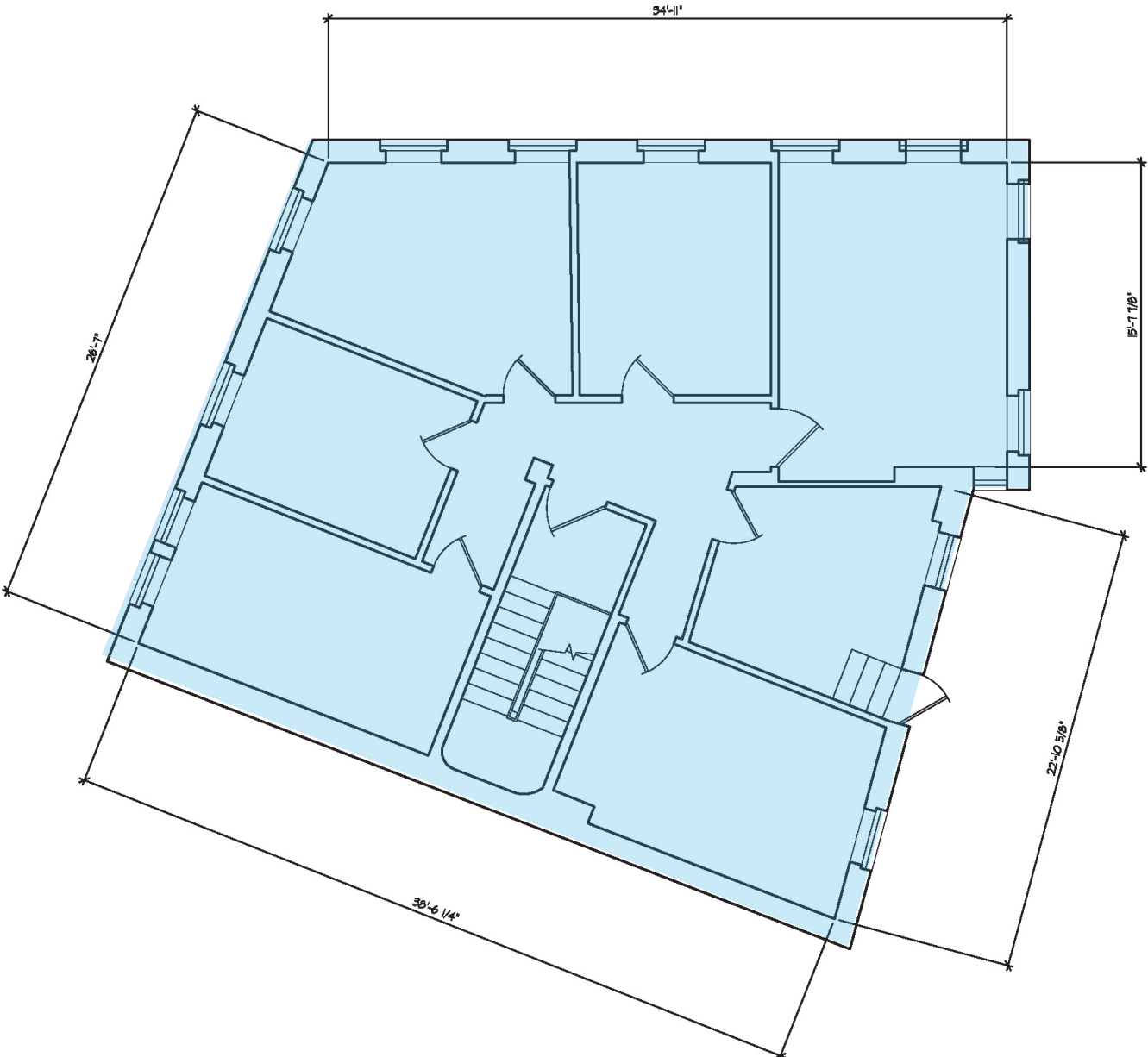
SECOND FLOOR



MAREK RICH
202-716-5070
mrich@scheerpartners.com

NICK PUGH
202-683-7916
mpugh@scheerpartners.com

THIRD FLOOR



MAREK RICH
202-716-5070
mrich@scheerpartners.com

NICK PUGH
202-683-7916
mpugh@scheerpartners.com

**OFFICE /
RESIDENTIAL
PROPERTY
FOR SALE**



508 ST. PAUL STREET

FOR FURTHER INFORMATION:

MAREK RICH
202-716-5070
mrich@scheerpartners.com

NICK PUGH
202-683-7916
npugh@scheerpartners.com