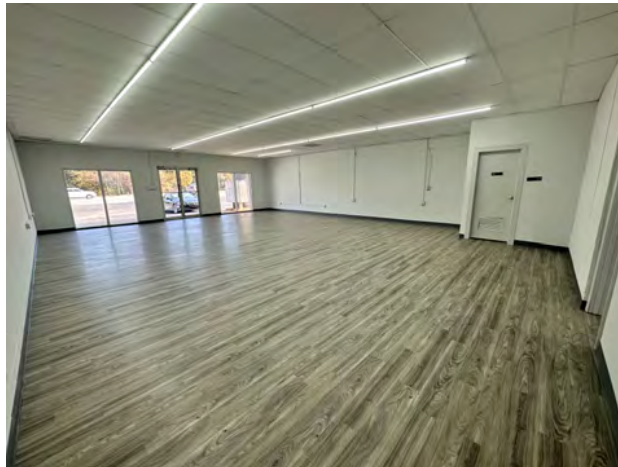
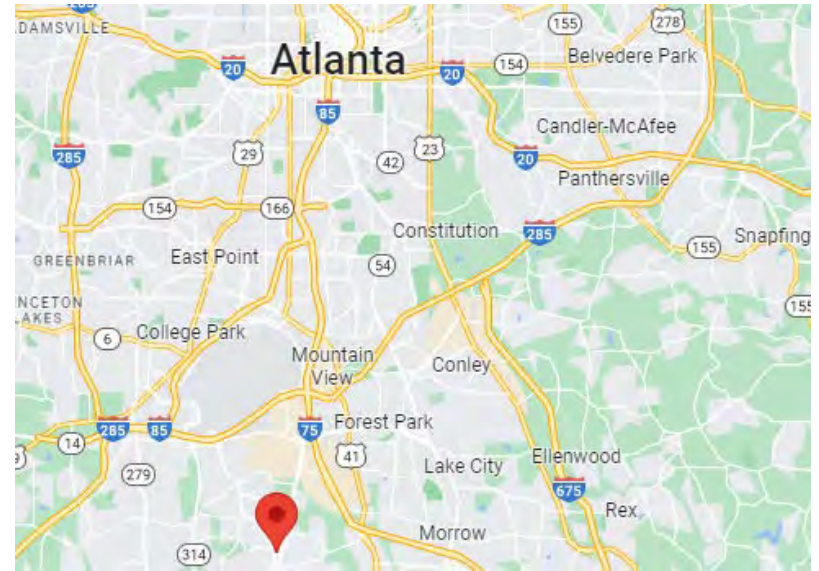


# RETAIL & WAREHOUSE SUITES AVAILABLE FOR LEASE

6487 GA Hwy 85, Riverdale, GA 30274

## PROJECT FEATURES & HIGHLIGHTS

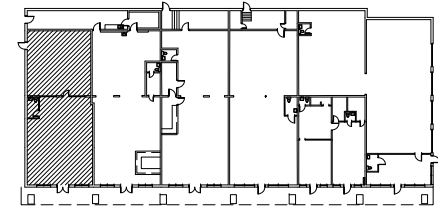
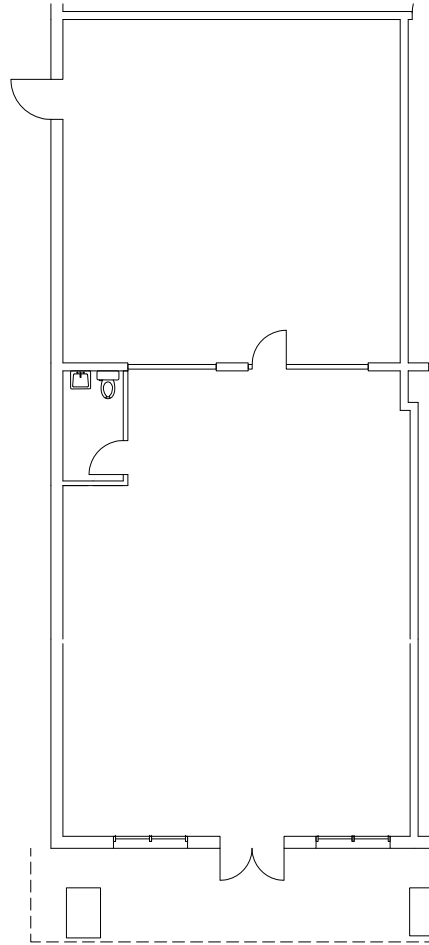
- 3,041 SF Warehouse Space with Drive-In Doors
- 2,400 SF Retail Spec Suite
- 2,792 SF Corner Retail Space
- 5,979 SF Warehouse Space with Gated Lot
- Newly Spec'd Warehouse & Retail Spaces
- Close Proximity to I-75, I-285, & Hartsfield-Jackson Airport
- Aggressive Rate and Lease Terms
- Property Recently Renovated with New Paint, Signage, Parking Lots
- Monument and Building Signage Available



**Will Middour**  
404.290.9713  
WMIDDOUR@MIDDOURINVESTMENTS.COM

**Allie Schonberg**  
404.242.1660  
ASCHONBERG@MIDDOURINVESTMENTS.COM

**Middour Investments, LLC**  
www.middourinvestments.com  
3060 Peachtree Rd, Ste 1080 Atlanta, GA 30305



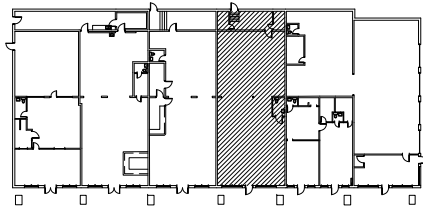
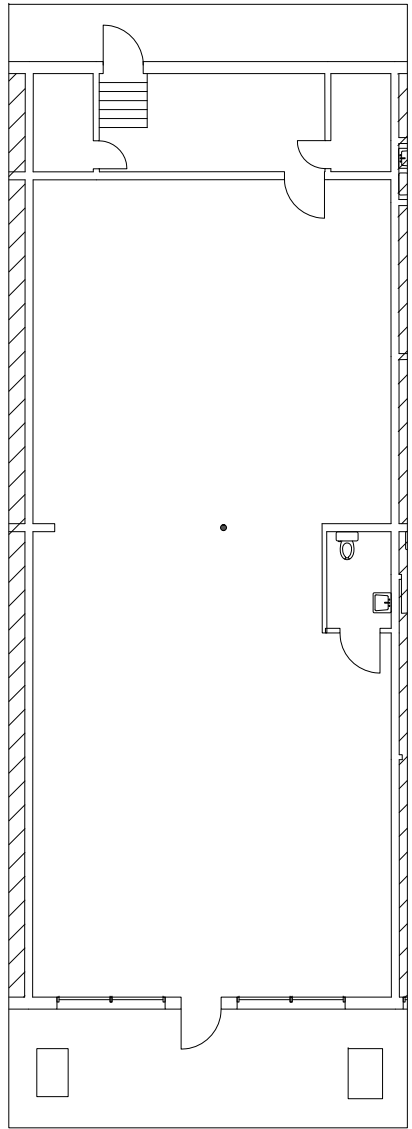
KEYPLAN

---



WILLIAM MIDDOUR 404.290.9713  
WMIDDOUR@MIDDOURINVESTMENTS.COM  
ALLIE SCHONBERG 404.242.1660  
ASCHONBERG@MIDDOURINVESTMENTS.COM

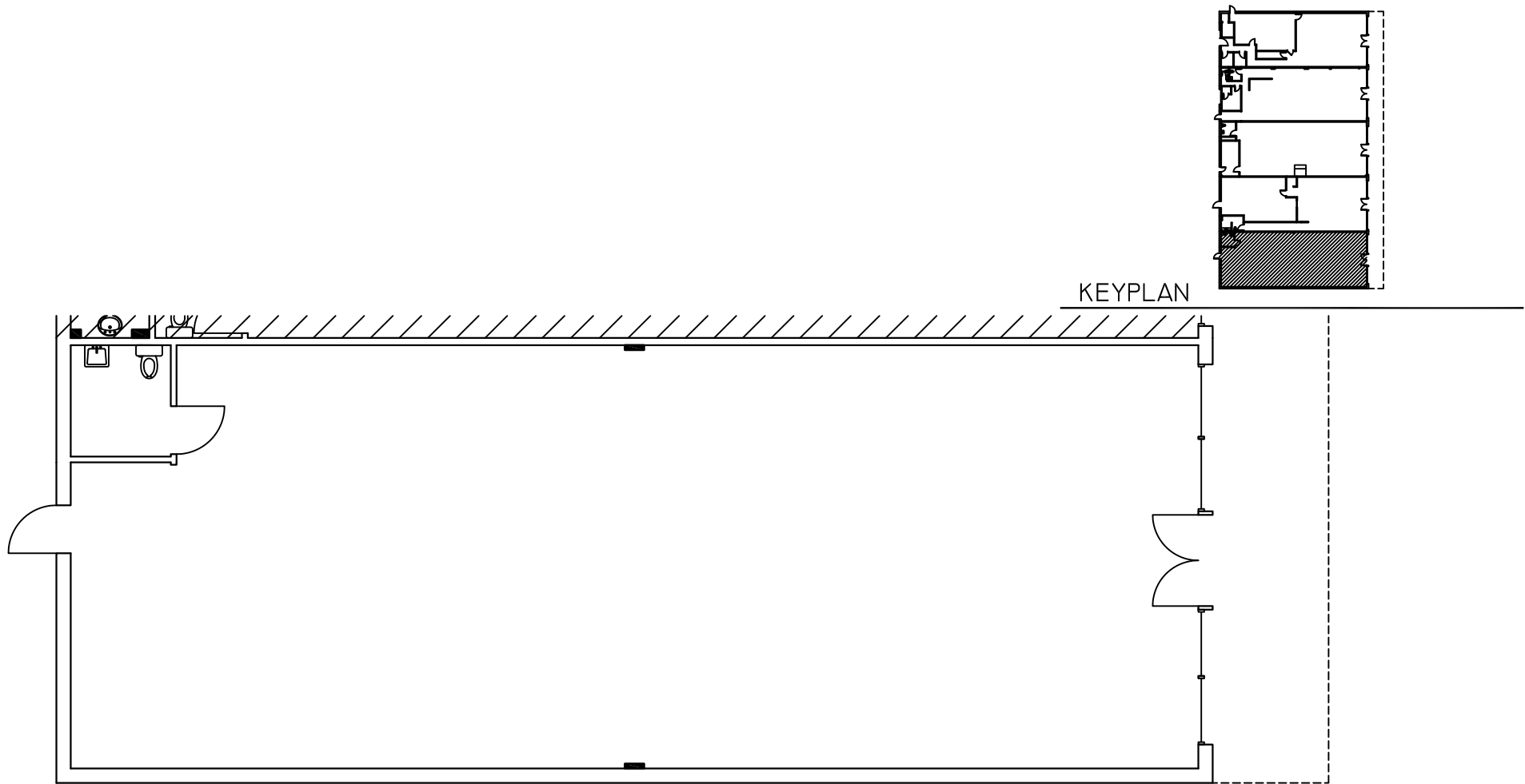




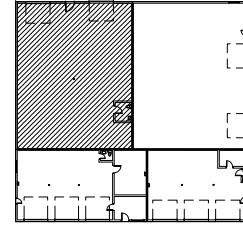
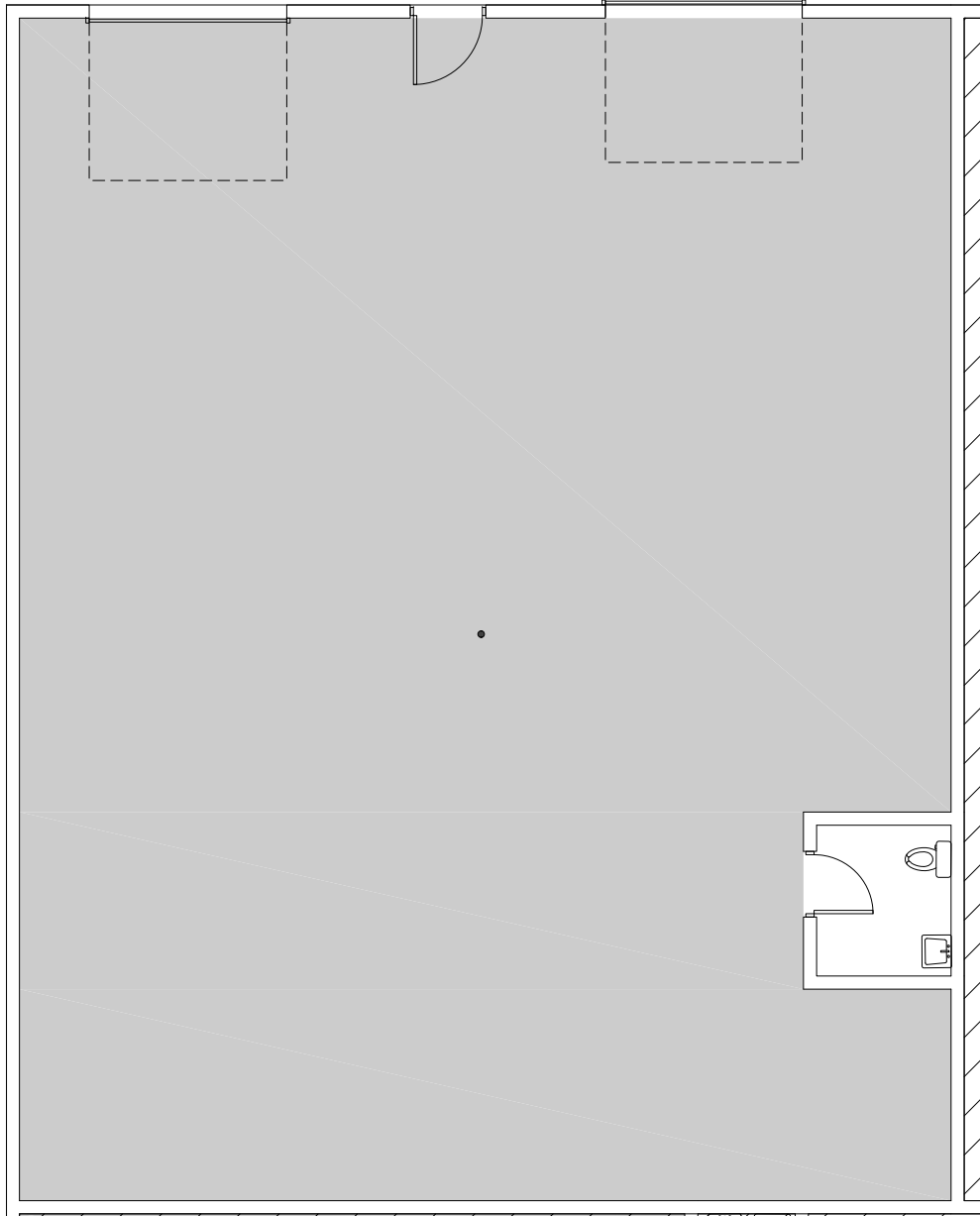
KEYPLAN



WILLIAM MIDDOUR 404.290.9713  
WMIDDOUR@MIDDOURINVESTMENTS.COM  
ALLIE SCHONBERG 404.242.1660  
ASCHONBERG@MIDDOURINVESTMENTS.COM



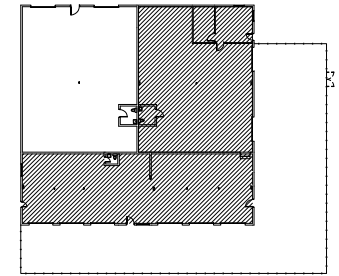
WILLIAM MIDDOUR 404.290.9713  
 WMIDDOUR@MIDDOURINVESTMENTS.COM  
 ALLIE SCHONBERG 404.242.1660  
 ASCHONBERG@MIDDOURINVESTMENTS.COM



KEYPLAN



WILLIAM MIDDOUR 404.290.9713  
WMIDDOUR@MIDDOURINVESTMENTS.COM  
ALLIE SCHONBERG 404.242.1660  
ASCHONBERG@MIDDOURINVESTMENTS.COM



KEYPLAN



WILLIAM MIDDOUR 404.290.9713  
 WMIDDOUR@MIDDOURINVESTMENTS.COM  
 ALLIE SCHONBERG 404.242.1660  
 ASCHONBERG@MIDDOURINVESTMENTS.COM