

1.1 Acres of Land For Sale in Miami

16001 SW 142ND AVENUE, MIAMI, FL 33177



1.1 Acres of Land For Sale in Miami

16001 SW 142nd Avenue, Miami, FL 33177

SIZE: 47,871 SF / 1.1 Acres

PRICING: \$1.39M (\$29 PSF)

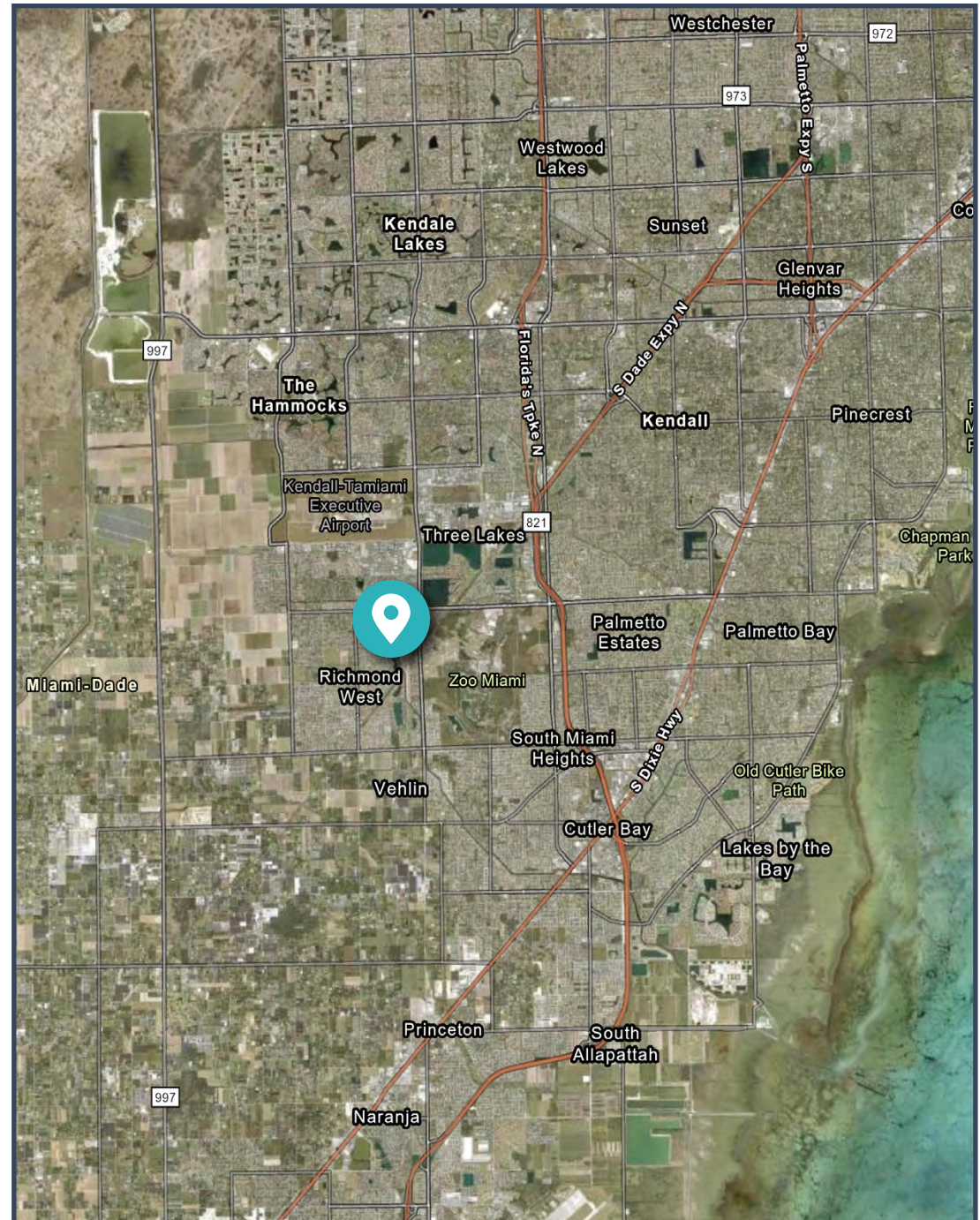
AVAILABILITY: Immediate

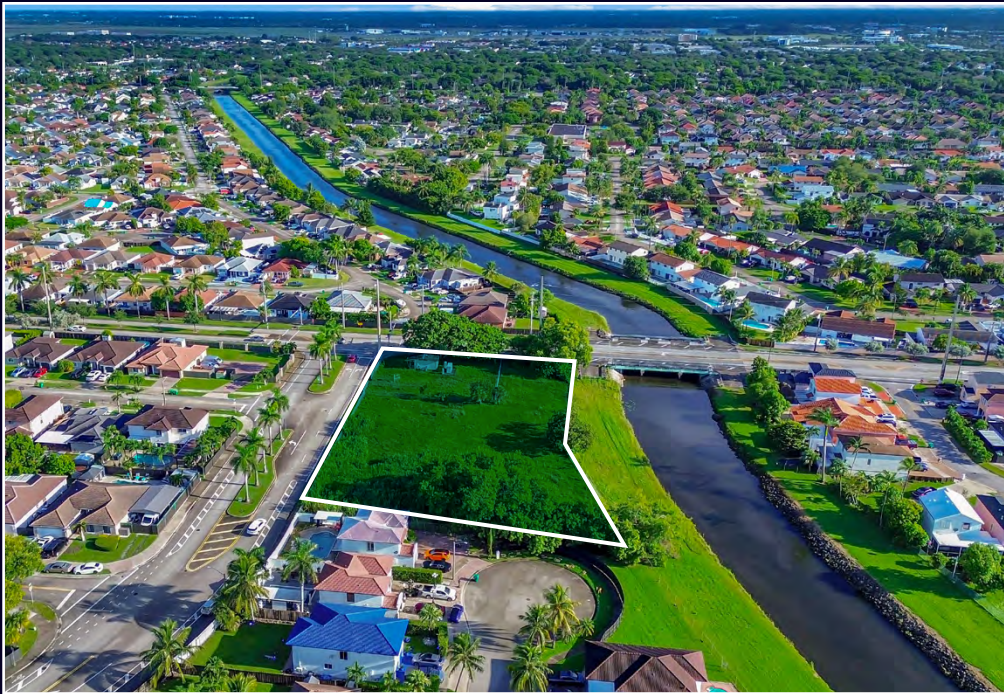
- HIGHLIGHTS:**
- Ideal site for residential development
 - Lennar is developing Phase II of their Salerno community 1/2 mile away with homes ranging from \$743K - \$867K

DEMOGRAPHICS

(1, 3, 5 MILES)

Population	Daytime Population	Average HH Income
24,222	16,177	\$114,440
98,940	95,712	\$116,515
285,706	241,387	\$108,671





1.1 Acres of Land For Sale in Miami

16001 SW 142nd Avenue
Miami, FL 33177



FOR INQUIRIES, CONTACT:

Andrew Rosenberg
(305) 897-0939
andrew@upsidecre.com

