

FOR LEASE

THE CHOUTEAU CENTER

133 South 11th Street • St. Louis, MO 63102



- Office suites available / fully furnished and unfurnished
- Available for short term lease: 3,533 SF on Floor 2; 4,878 SF on Floor 3; 4,251 SF on Floor 5
- Closest office building to both the civil and the federal courts
- Adjacent to a parking structure
- Short blocks from Ballpark Village and Enterprise Center
- A stone's throw from Highway 64/40

Price: Call Broker

For Information, Contact Agent:

Lily Seymour, MBA, CCIM

Office: 314-820-1124

Cell: 314-277-5485

Seymour@realtyexchangeweb.com

FOR LEASE

THE CHOUTEAU CENTER

133 South 11th Street • St. Louis, MO 63102



The information contained herein is not warranted, although it has been obtained from the owner of the property or from other sources we deem reliable. It is subject to change without notice. Owner and broker make no representation as to the environmental condition of the property and recommend purchaser's/tenant's independent investigation.

For Information, Contact Agent:

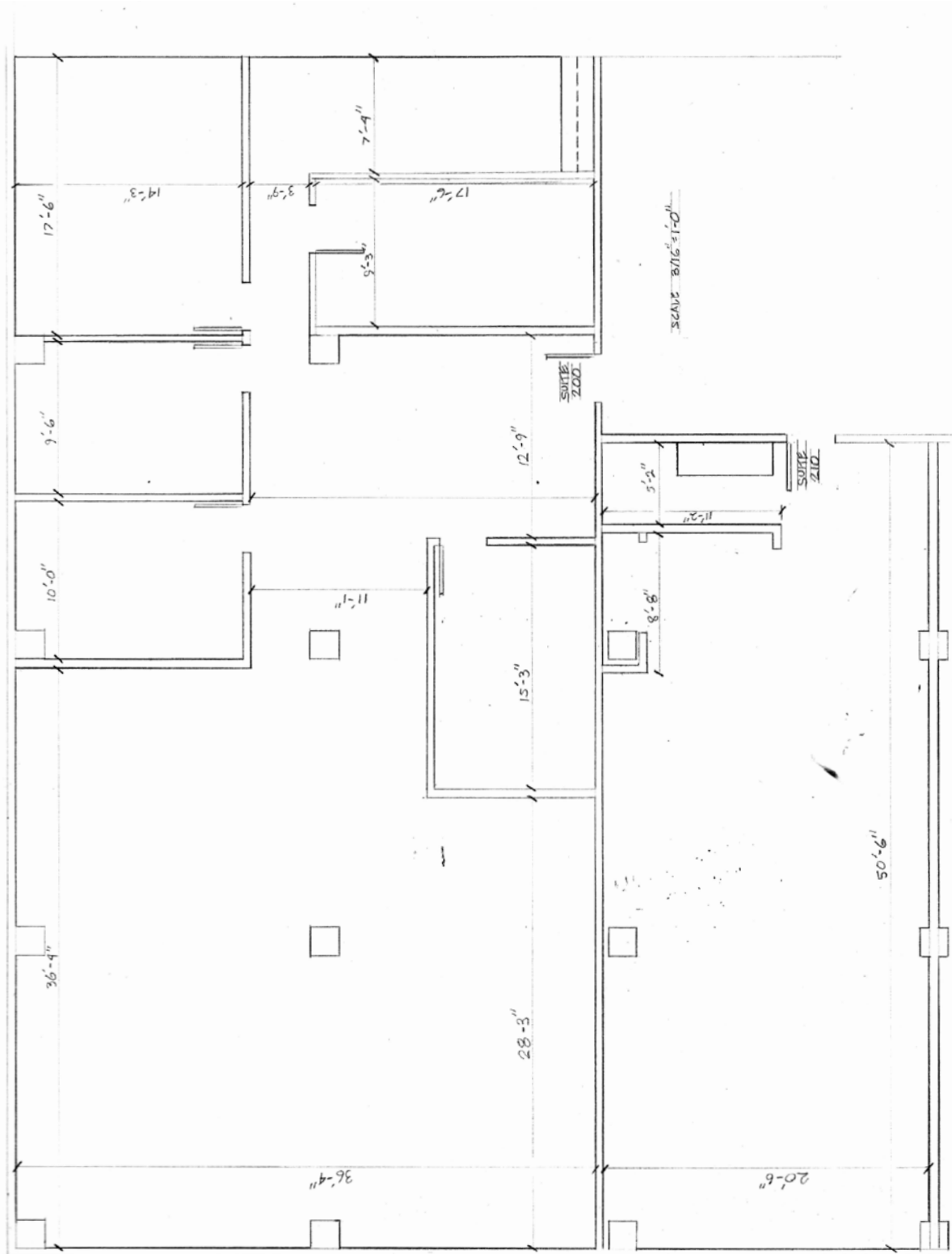
Lily Seymour, MBA, CCIM

Office: 314-820-1124

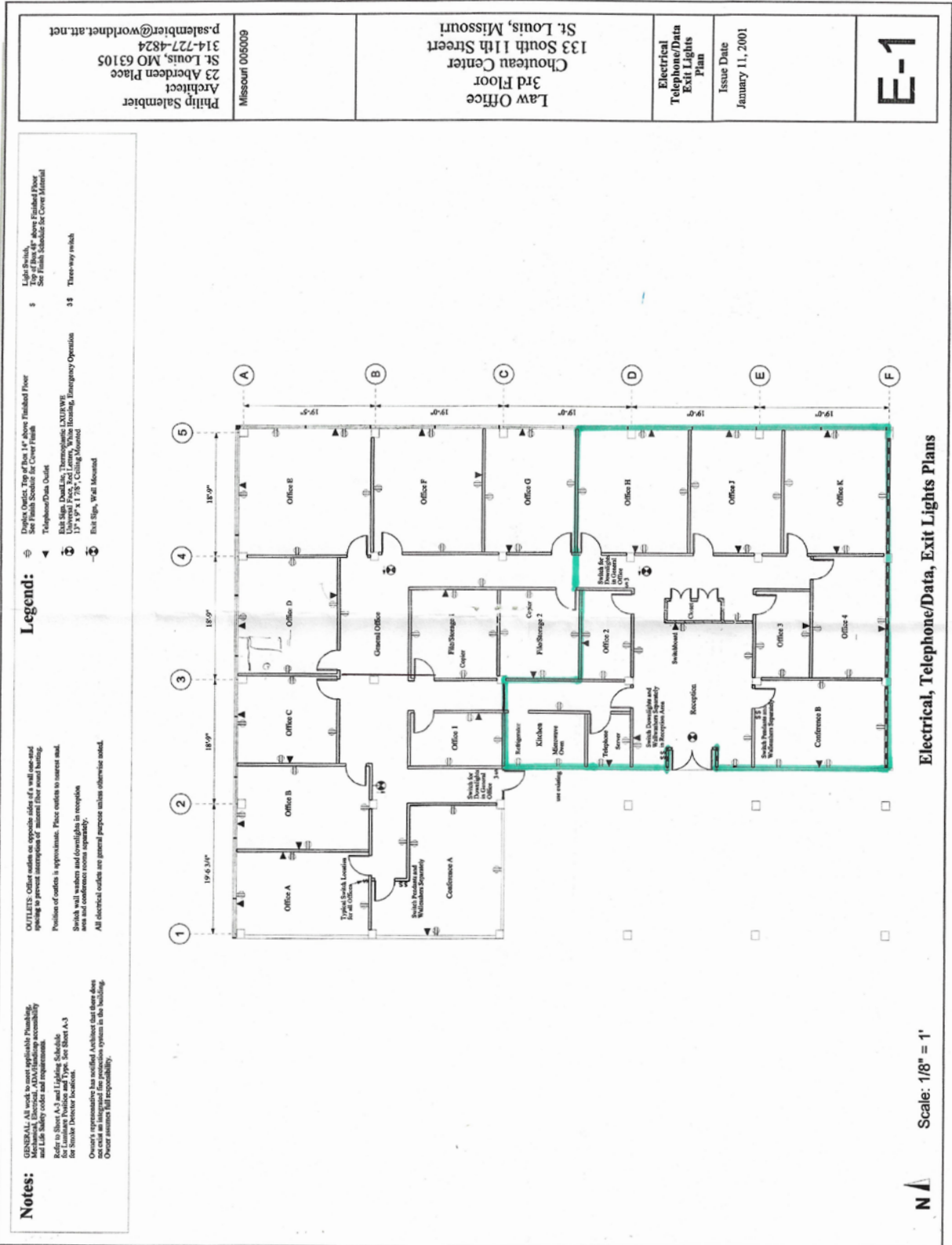
Cell: 314-277-5485

Seymour@realtyexchangeweb.com

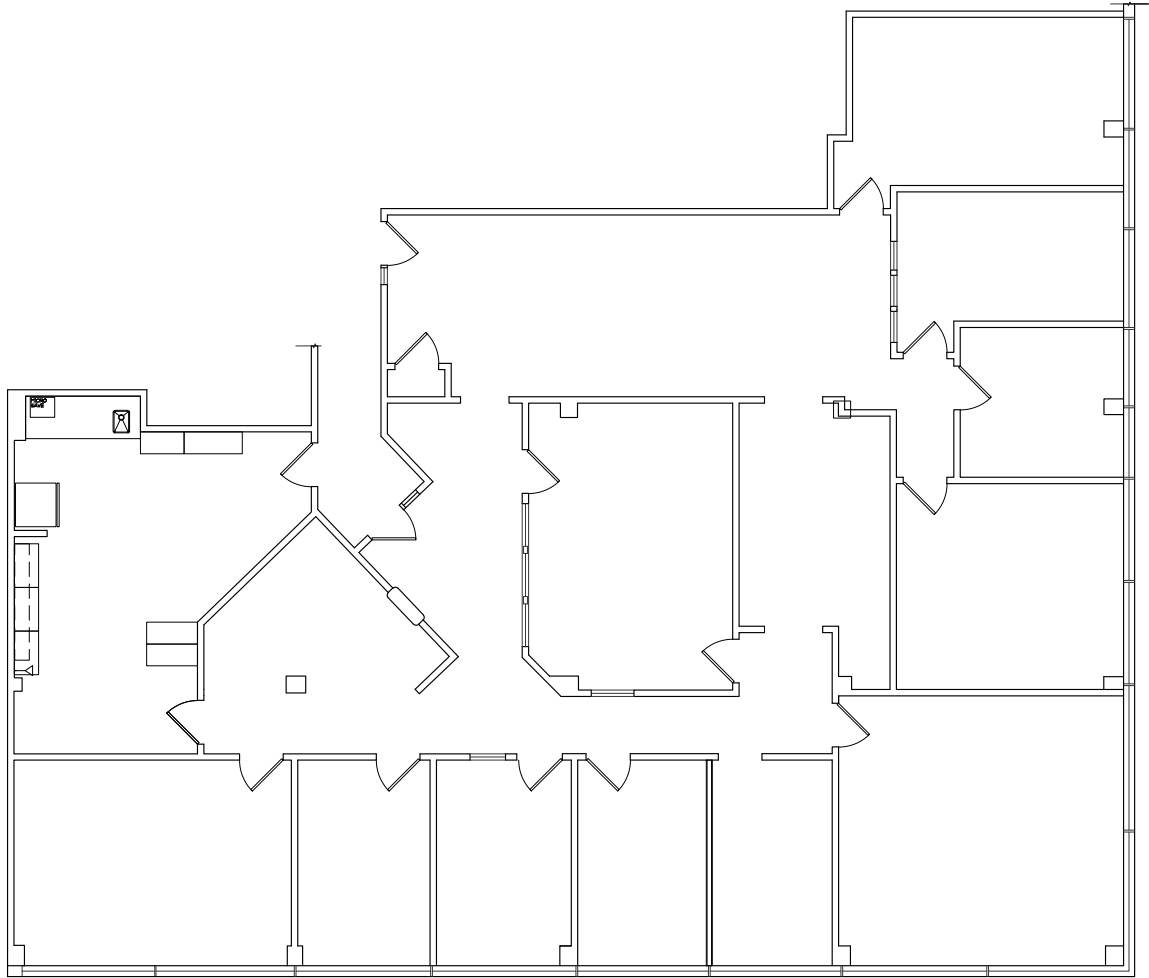
2ND FLOOR



3RD FLOOR



5TH FLOOR



FLOOR PLAN
SCALE: 1/8" = 1'-0"