



# OFFICE/MEDICAL SPACE FOR LEASE

## SIGNATURE SQUARE SOUTH

617-657 E. GOLF ROAD, ARLINGTON HEIGHTS, IL

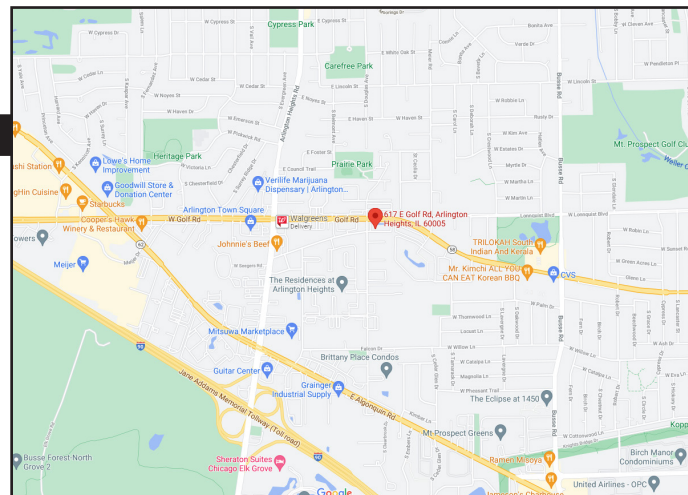


### BUILDING FEATURES:

- 1,506 SF Office or Medical Space Available
- Located at stoplight intersection of Golf Road & Goebbert Road
- Minutes from RT 53 & I-90
- Tenant controlled HVAC & 24-hour tenant access
- Comcast high-speed internet and cable available
- Beautifully landscaped with fountain and pond
- \*\*\* New Parking Lot Installed 2025!! \*\*\*
- New Building Monument Sign with Tenant Signage Available
- High-end buildouts
- Zoned O-T
- Operable windows & tenant signage available
- Asking Rent: \$18.00-\$18.75 PSF Modified Gross

### AVAILABLE SPACE:

BLDNG #	SUITE	SIZE	Available
617	101	2,700 SF	Mix of private office and open floor plan.



### FOR MORE INFORMATION:

**RANDY OLCZYK**  
 President/Principal  
 Direct: 847.246.9611  
 randy@chicagolandcommercial.com

**RAY OKIGAWA**  
 Senior Vice President  
 Direct: 847.246.9632  
 ray@chicagolandcommercial.com



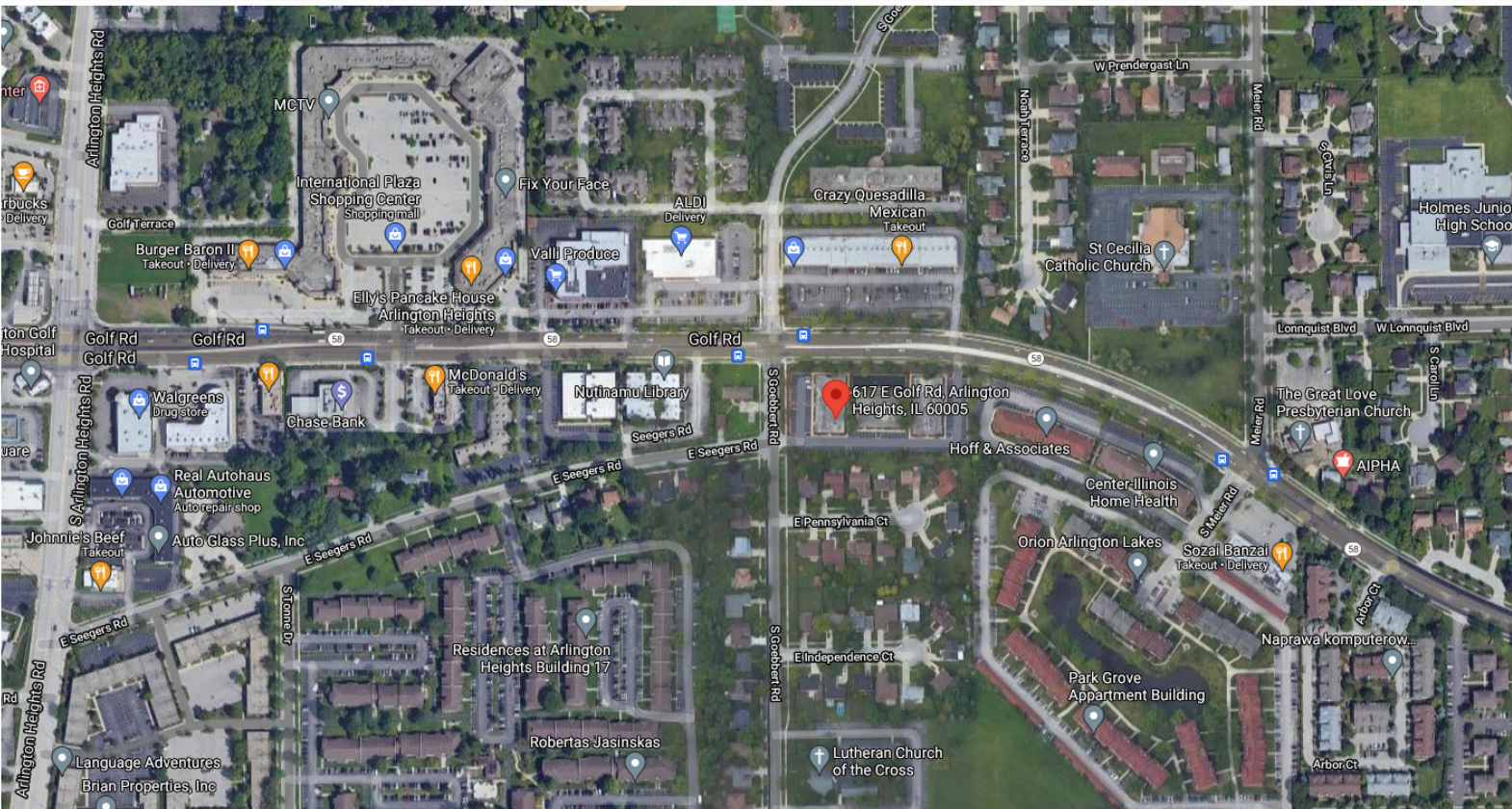
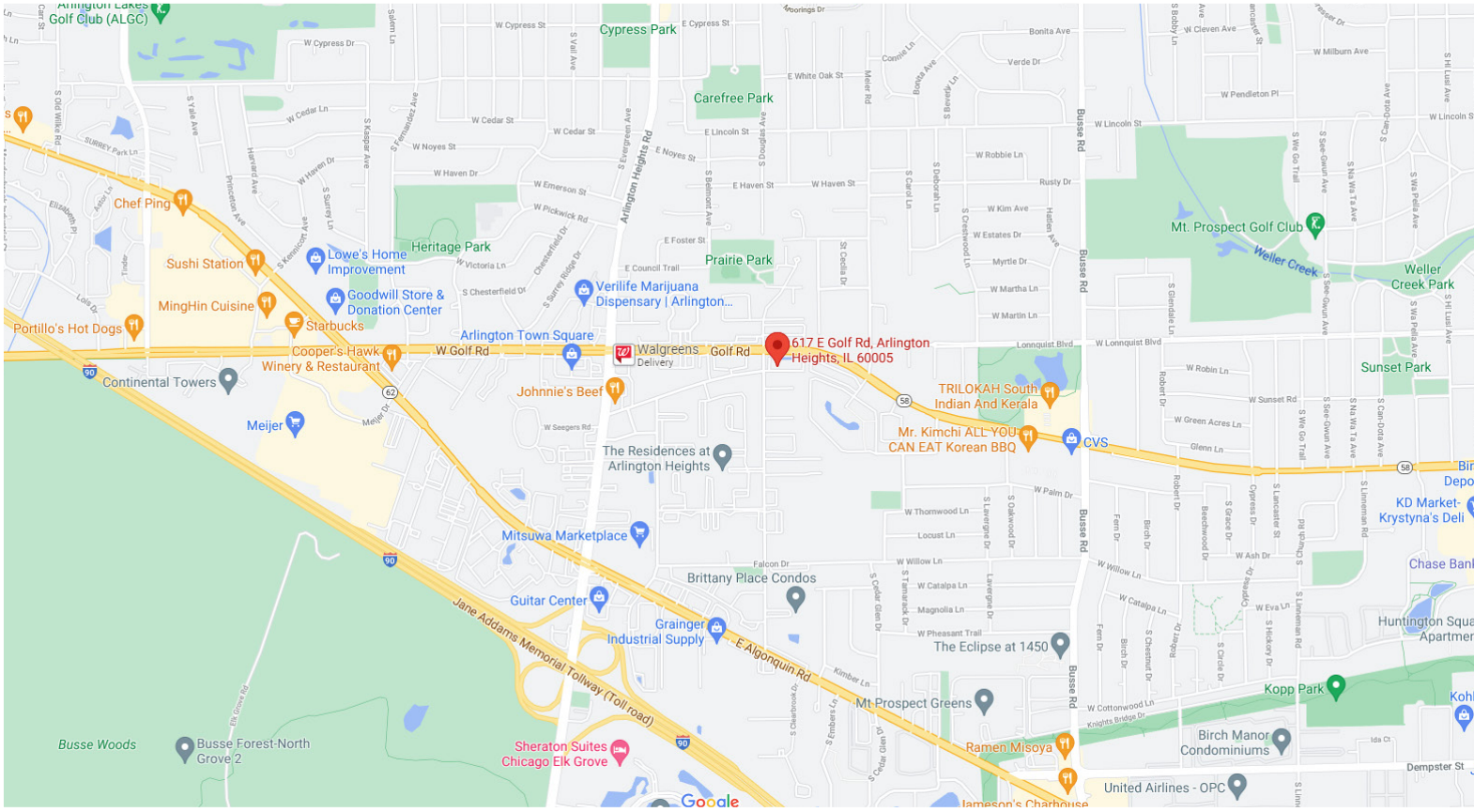
4811 Emerson Ave Suite 112, Palatine, IL



# OFFICE/MEDICAL SPACE FOR LEASE

## SIGNATURE SQUARE SOUTH

617-657 E. GOLF ROAD, ARLINGTON HEIGHTS, IL





# OFFICE/MEDICAL SPACE FOR LEASE

SIGNATURE SQUARE SOUTH  
617-657 E. GOLF ROAD, ARLINGTON HEIGHTS, IL

## BUILDING PHOTOGRAPHS



BEAUTIFULLY  
LANDSCAPED GROUNDS



DRAMATIC POND &  
FOUNTAIN VIEWS



NEW PARKING LOT  
INSTALLED **2025!**

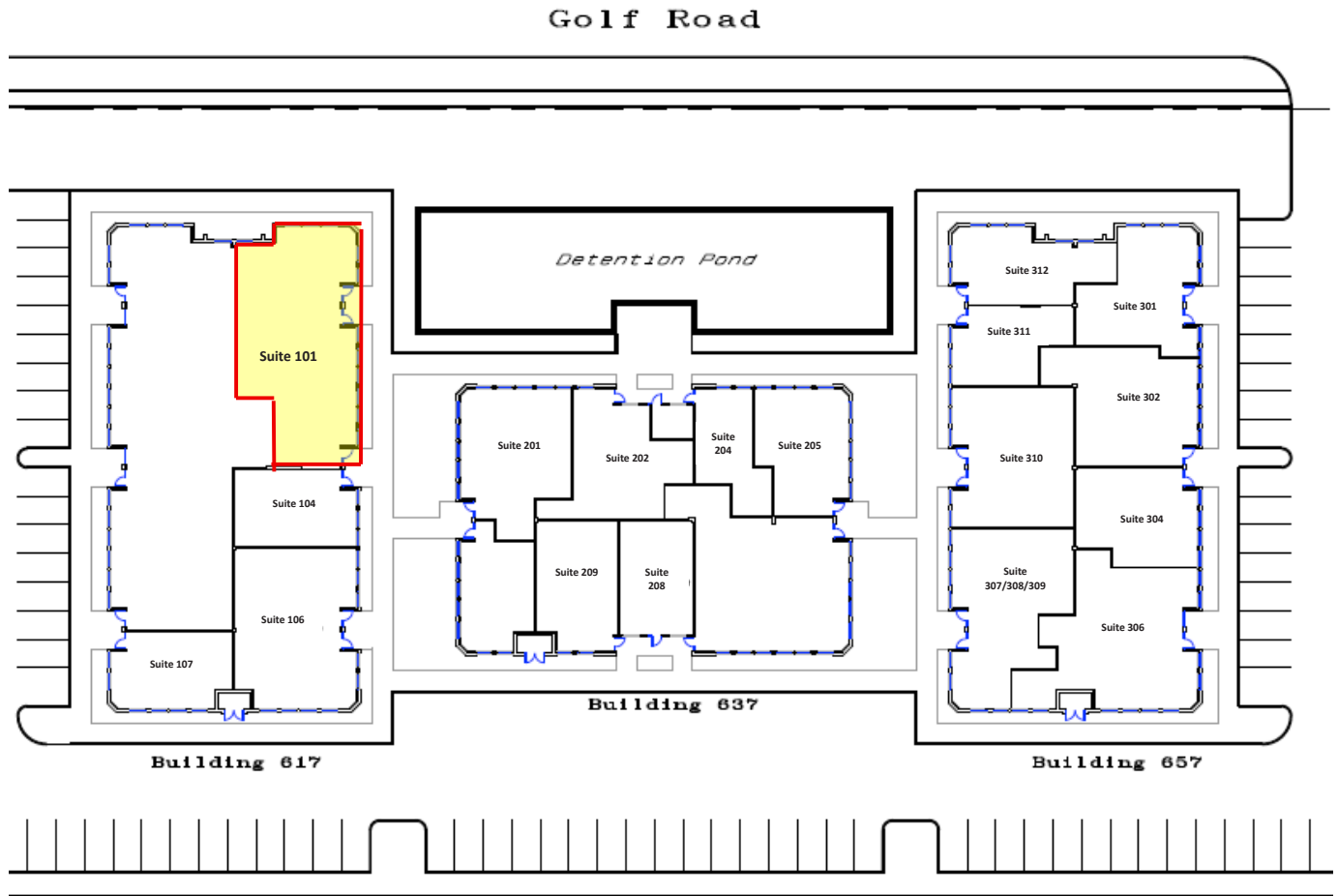




# OFFICE/MEDICAL SPACE FOR LEASE

SIGNATURE SQUARE SOUTH  
617-657 E. GOLF ROAD, ARLINGTON HEIGHTS, IL

## BUILDING SITE PLAN



**SIGNATURE SQUARE SOUTH**  
617-657 E. Golf Rd. Arlington Heights, IL

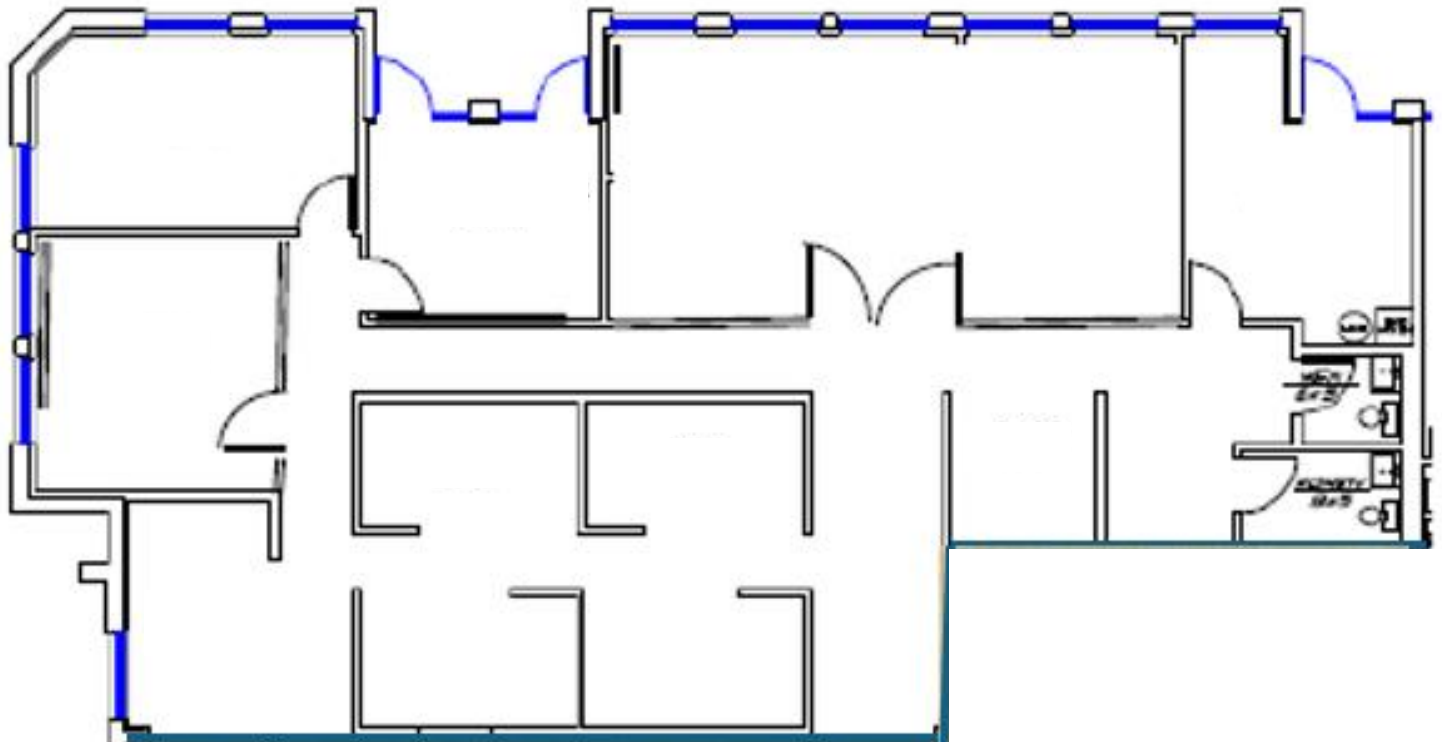




# OFFICE/MEDICAL SPACE FOR LEASE

SIGNATURE SQUARE SOUTH  
617-657 E. GOLF ROAD, ARLINGTON HEIGHTS, IL

OFFICE SPACE FOR LEASE - 617-101 (2,700 SF)



**Signature Square South**  
**617 E. Golf Rd.**  
**Suite 101**  
**Arlington Heights, IL**  
**± 2,700 RSF**

