



JETPORT COMMERCE PARK 3A

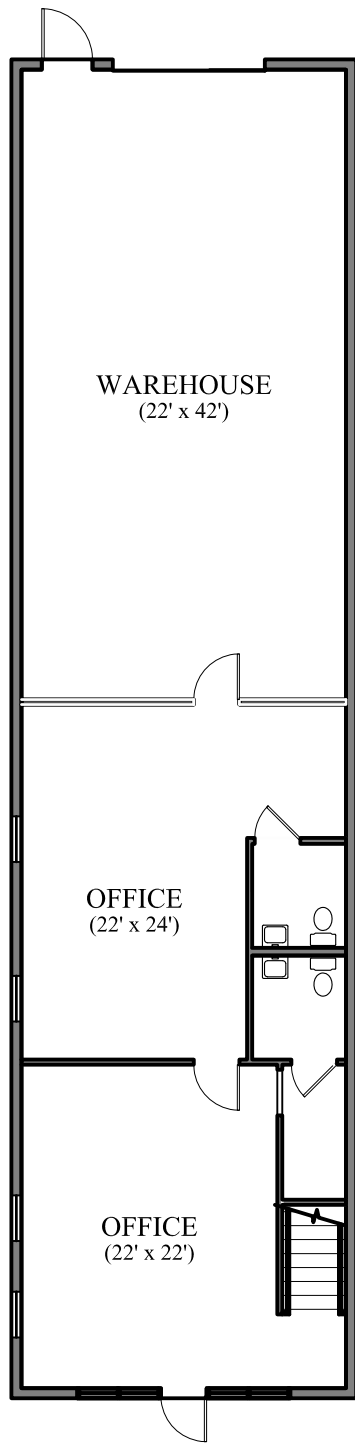
(INTERSTATE 75 & DANIELS PARKWAY - FORT MYERS, FLORIDA)

OFFICE / SHOWROOM / WAREHOUSE UNITS FOR LEASE
1,540 S.F. (OFFICE) / 924 S.F. (WAREHOUSE) - 2,464 S.F. TOTAL

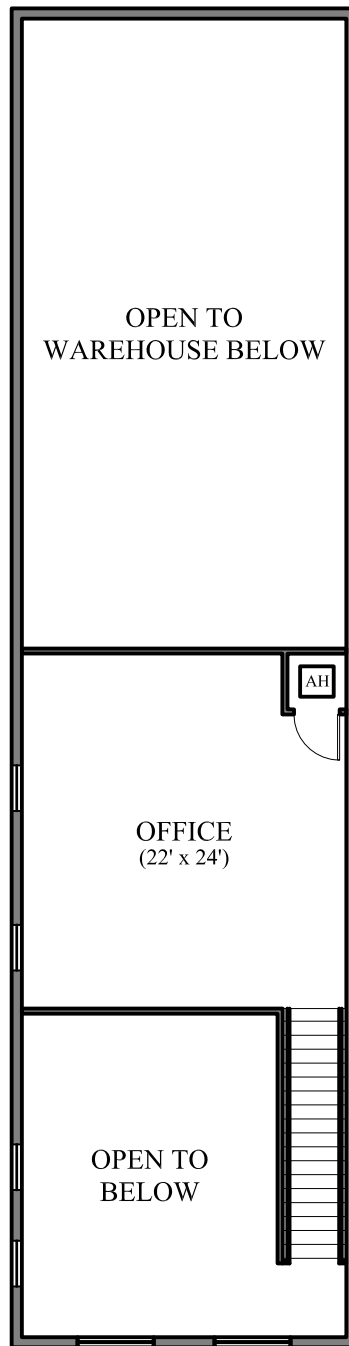
DEVELOPED BY:



Contact Gary Waldrop 239.850.3666 or Greg Waldrop 239.603.3442



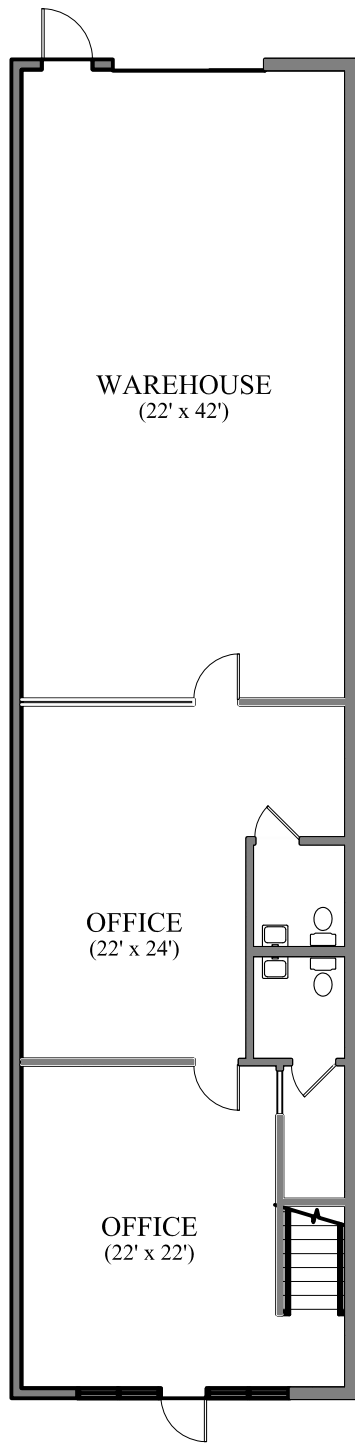
FIRST FLOOR



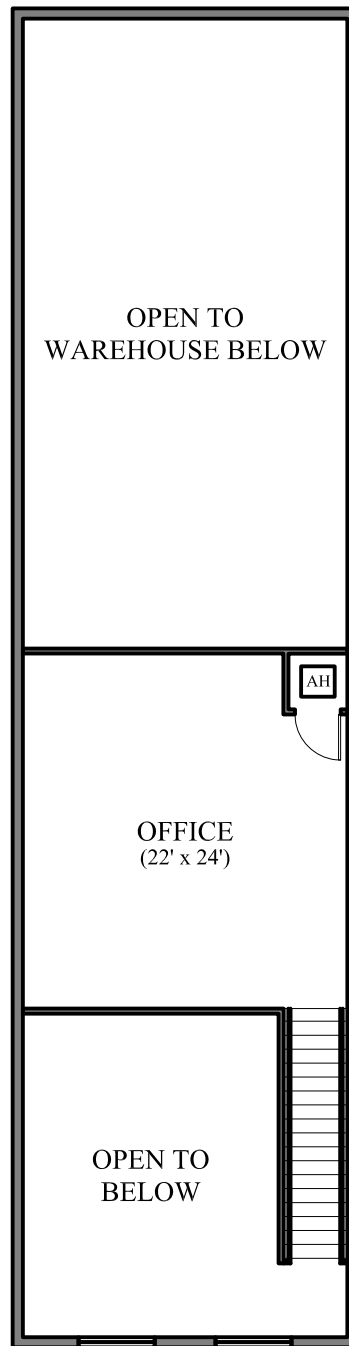
SECOND FLOOR

(3A END UNIT)

USE	AREA
OFFICE (UPSTAIRS)	528 S.F.
OFFICE (DOWNSTAIRS)	1,012 S.F.
OFFICE (TOTAL)	1,540 S.F.
WAREHOUSE	924 S.F.
TOTAL	2,464 S.F.



FIRST FLOOR



SECOND FLOOR

(3A INTERIOR UNIT)

USE	AREA
OFFICE (UPSTAIRS)	528 S.F.
OFFICE (DOWNSTAIRS)	1,012 S.F.
OFFICE (TOTAL)	1,540 S.F.
WAREHOUSE	924 S.F.
TOTAL	2,464 S.F.



JETPORT COMMERCE
PARK 14B

JETPORT COMMERCE
PARK 3A

NORTH
↑

0 15 30 60
Scale: 1" = 30'

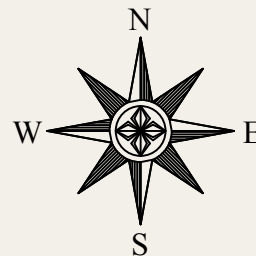
W
WALDROP
ENGINEERING, P.A.
Civil Engineering & Land
Development Consultants
10641 Airport Road North
Suite 32
Naples, FL 34109
Phone: 239-596-9191
Fax: 239-596-9071
www.waldropengineering.com
Florida Certificate of Authorization # 8636

JETPORT
COMMERCE PARK

SITE PLAN

DIRECTIONS

- TAKE I-75 TO EXIT 131 (DANIELS PARKWAY)
- PROCEED EAST 1/4 MILE TO JETPORT COMMERCE PARKWAY
- TURN RIGHT ON JETPORT COMMERCE PARKWAY AND JETPORT COMMERCE PARK IS ONE BLOCK AHEAD



EXIT # 131

PROJECT
LOCATION

JETPORT
COMMERCE
PARK 14B

JETPORT
COMMERCE
PARK 3A

