

# LAYTON PARK PLACE

FOR LEASE



## PROPERTY DETAILS

1530 Layton Hills Pkwy., Layton, UT 84041

*Lease Rate: \$24.00/SF Full Service*

- 2,363 SF available
- Highly Secure Facility
- Conveniently Located in a Premier Business Park in Layton
- Close to Restaurants and Layton Hills Mall
- Near Hill Air Force Base
- High traffic counts nearby
- 22,395 ADT on Layton Hills Parkway
- 145,371 ADT on I-15
- 4/1000 Parking Ratio

## SURROUNDING AMENITIES



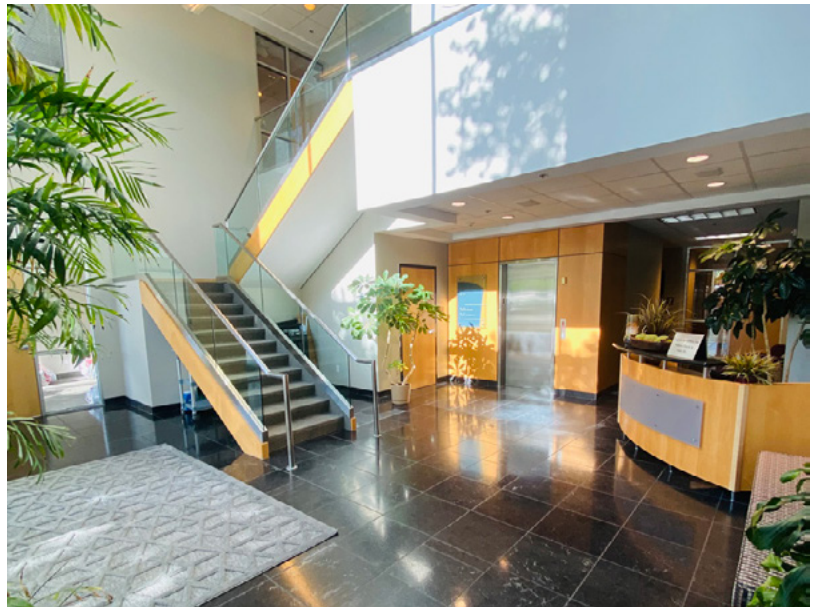
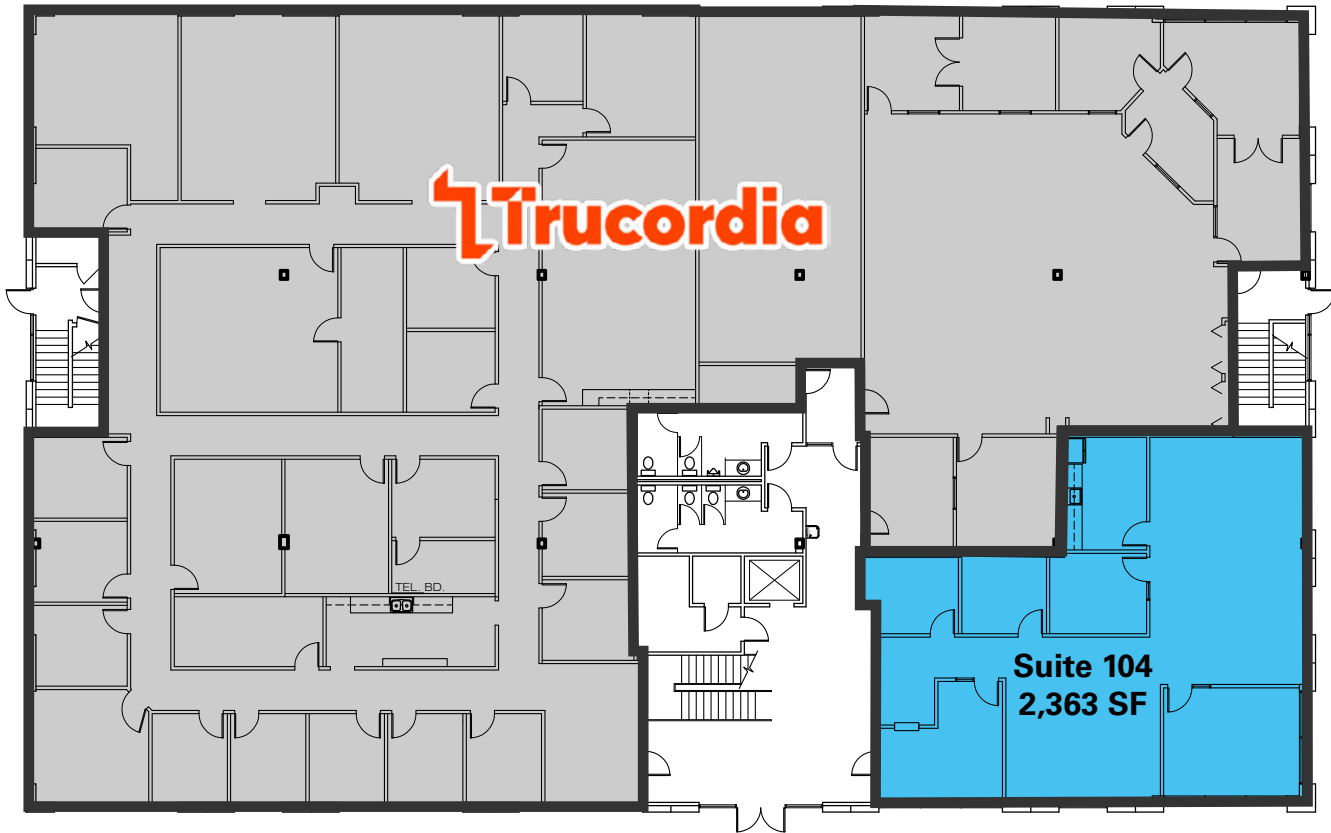
**BRAXTON WILLIE, CCIM**  
bwillie@newmarkmw.com  
direct 801.803.3334  
[View Profile](#)

**CHRIS FALK, CCIM, SIOR**  
cfalk@newmarkmw.com  
direct 801.499.6514  
[View Profile](#)

**FULL SERVICE  
COMMERCIAL REAL ESTATE**  
1410 S University Park Blvd, Ste 120  
Clearfield, Utah 84015  
Office 801.578.5580  
[www.newmarkmw.com](http://www.newmarkmw.com)

# LAYTON PARK PLACE

## FIRST FLOOR



**BRAXTON WILLIE, CCIM**  
bwillie@newmarkmw.com  
direct 801.803.3334  
[View Profile](#)

**CHRIS FALK, CCIM, SIOR**  
cfalk@newmarkmw.com  
direct 801.499.6514  
[View Profile](#)

**FULL SERVICE  
COMMERCIAL REAL ESTATE**  
1410 S University Park Blvd, Ste 120  
Clearfield, Utah 84015  
Office 801.578.5580  
[www.newmarkmw.com](http://www.newmarkmw.com)





**BRAXTON WILLIE, CCIM**  
 bwillie@newmarkmw.com  
 direct 801.803.3334  
[View Profile](#)

**CHRIS FALK, CCIM, SIOR**  
 cfalk@newmarkmw.com  
 direct 801.499.6514  
[View Profile](#)

**FULL SERVICE  
 COMMERCIAL REAL ESTATE**  
 1410 S University Park Blvd, Ste 120  
 Clearfield, Utah 84015  
 Office 801.578.5580  
[www.newmarkmw.com](http://www.newmarkmw.com)