

PORTA  
& CO.

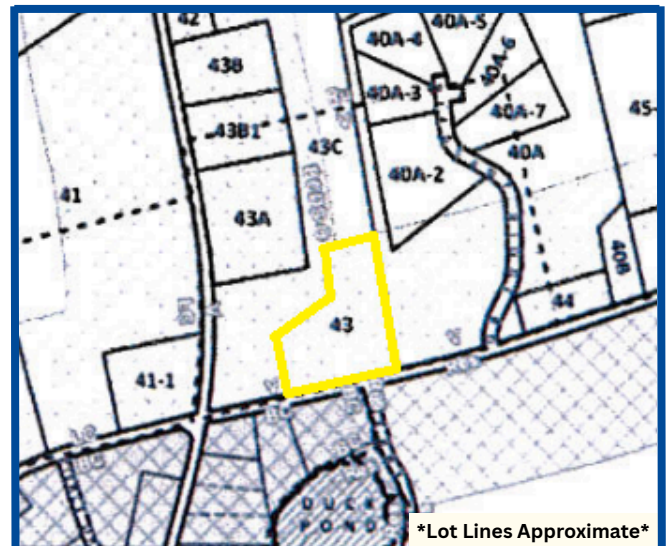
# FOR SALE | FORMER RESTAURANT

1420 Long Plains Road | Buxton, ME



## Property Highlights

- 3,600± SF commercial building on 3.1± acre in Buxton
- Turn Key Restaurant Opportunity.
- All furniture, fixtures, and equipment included.
- Outdoor patio and much more,
- Sale Price: \$595,000





# PROPERTY SPECIFICATIONS

PORTA  
& CO.

Owner	S & C, LLC
Building Size	3,600± SF
Year Built	1798 (Renovated 2017)
Lot Size	3.10± AC
Map/Lot	8 / 43
Book/Page	19486 / 348
Zoning	Village
Utilities	Public Water/Sewer
Parking	Ample on-site
FF&E	See Broker
Real Estate Tax	\$8,489.99 (FY 25)
Sale Price	\$595,000 (\$165/SF)





# PHOTOS

PORTA  
& CO.





# AERIALS

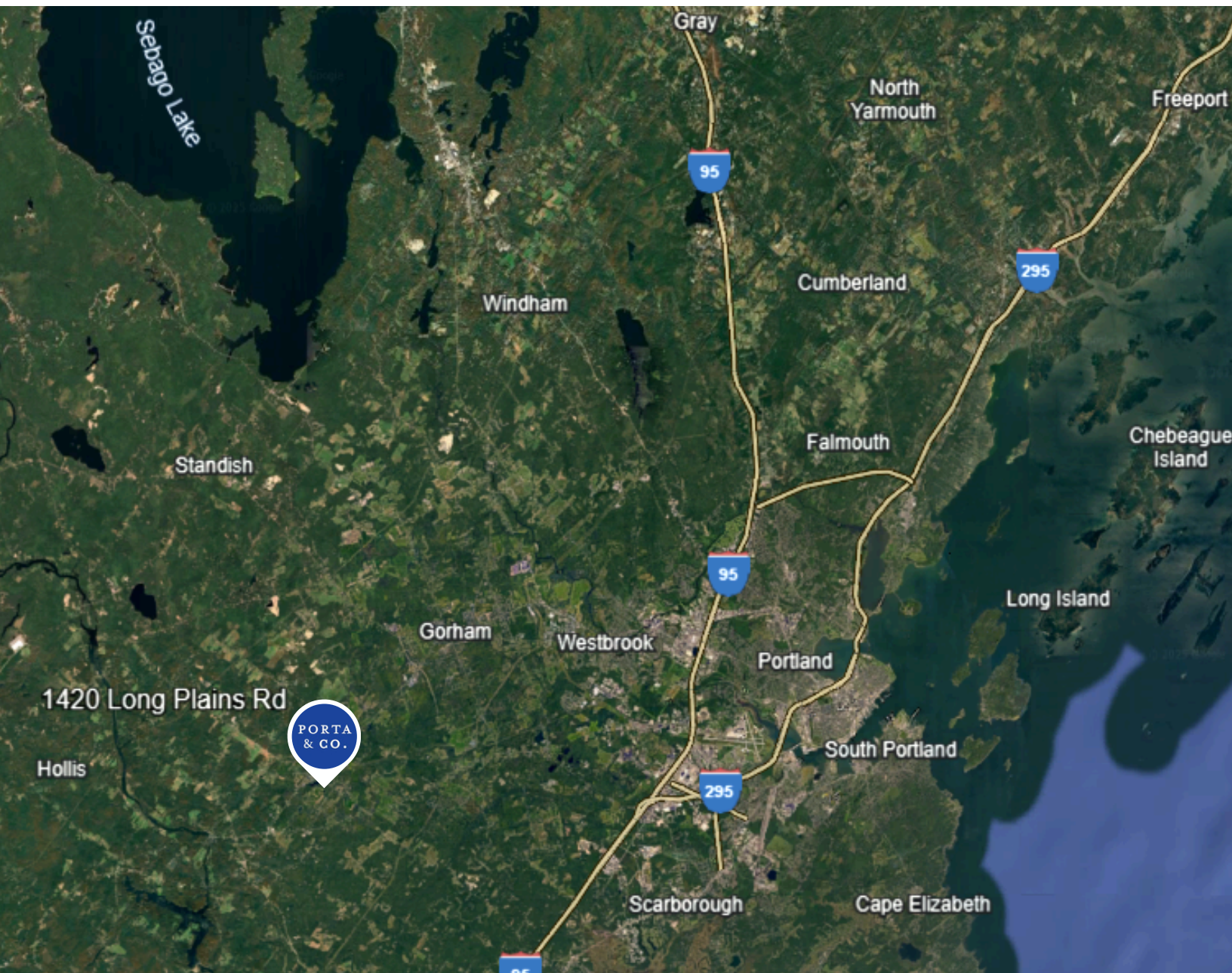
PORTA  
& CO.





# REGIONAL AERIAL

PORTA  
& CO.



## CONTACT



### Charles Day

Partner

C: 207-838-3335

O: 207-747-1515

[cday@portacompany.com](mailto:cday@portacompany.com)



### Emmett Peoples

Associate Broker

C: 207-400-4939

O: 207-747-1515

[epeoples@portacompany.com](mailto:epeoples@portacompany.com)

This information has been obtained from sources believed reliable and is intended for informational use only. The information contained herein has not been verified for accuracy or completeness. It is recommended that prospective tenants and buyers conduct their own inspection of the property and verify all information. Any reliance on this information is solely at your own risk. Photos herein are the property of their respective owners. Use of these images without the express written consent of the owner is prohibited.

**PORTA & CO.**

COMMERCIAL REAL ESTATE

30 Milk Street, Second Floor  
Portland, ME 04101  
207-747-1515  
[www.portacompany.com](http://www.portacompany.com)