

For Sale

±0.22 Acre Vacant Lot

Zoned Commercial in the City of Denmark

Great downtown development opportunity for restaurant, retail, office, etc.

Modular building on site to be removed

±80 feet wide by 120 feet deep

Bamberg County
TM# 0038-05-18-003

Asking Price: \$15,000

CONTACT

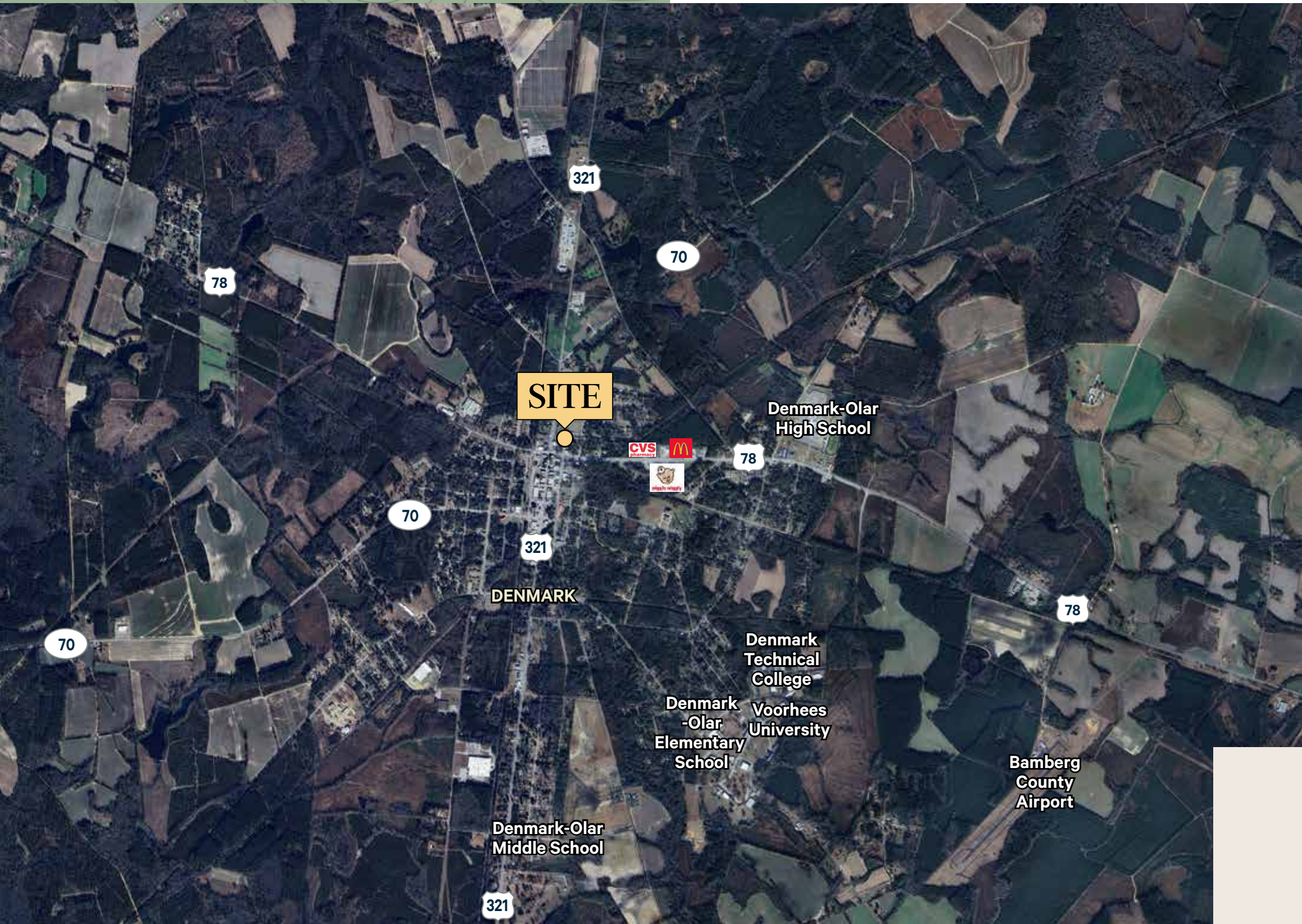
JUSTIN HIRSCH
First Vice President
+1 864 650 5570
justin.hirsch@cbre.com



**127 North
Beech Avenue**

DENMARK, SC 29042 | SITE #2557

Location Map



SITE

Denmark-Olar High School



DENMARK

Denmark Technical College

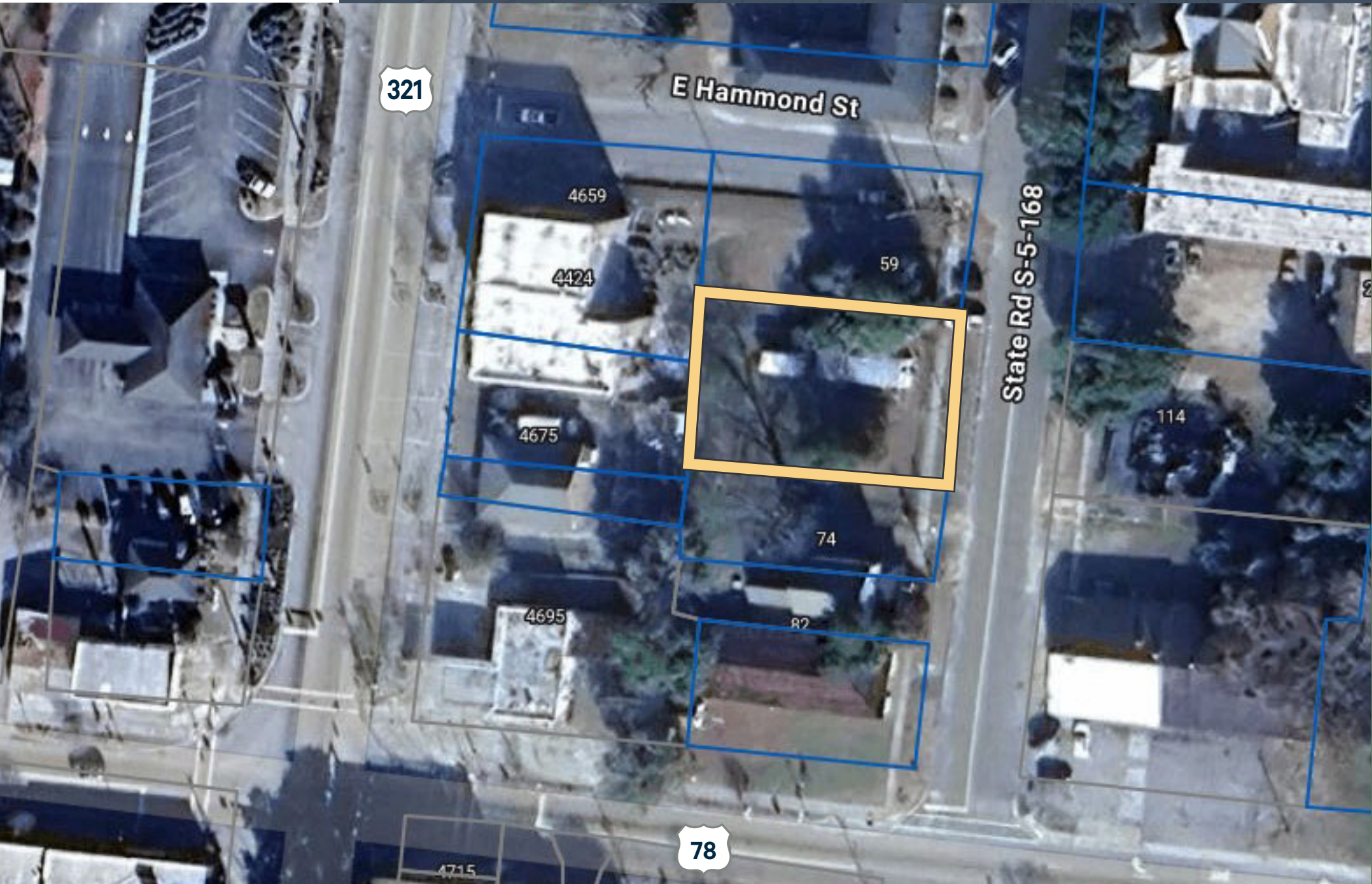
Denmark-Olar Elementary School

Voorhees University

Bamberg County Airport

Denmark-Olar Middle School

Tax Map



321

E Hammond St

4659

4424

59

4675

State Rd S-5-168

114

74

4695

82

78

4715

127 North Beech Avenue

DENMARK, SC 29042 | SITE #2557

CONTACTS

JUSTIN HIRSCH
First Vice President
+1 864 650 5570
justin.hirsch@cbre.com

© 2025 CBRE, Inc. All rights reserved. This information has been obtained from sources believed reliable but has not been verified for accuracy or completeness. CBRE, Inc. makes no guarantee, representation or warranty and accepts no responsibility or liability as to the accuracy, completeness, or reliability of the information contained herein. You should conduct a careful, independent investigation of the property and verify all information. Any reliance on this information is solely at your own risk. CBRE and the CBRE logo are service marks of CBRE, Inc. All other marks displayed on this document are the property of their respective owners, and the use of such marks does not imply any affiliation with or endorsement of CBRE. Photos herein are the property of their respective owners. Use of these images without the express written consent of the owner is prohibited.

CBRE