



FOR LEASE

# 1051 Interstate Court Findlay, OH

1.6 acres of Land Available

## Property Highlights

- Prime Development Site
- Directly off of Interstate 75
- Interstate Pylon Sign Available
- Excellent Traffic Counts
- Dense Retail Trade Area

### CONTACT US



**Mike Howard**

419 290 0561

[mike.howard@colliers.com](mailto:mike.howard@colliers.com)

**Colliers Detroit**

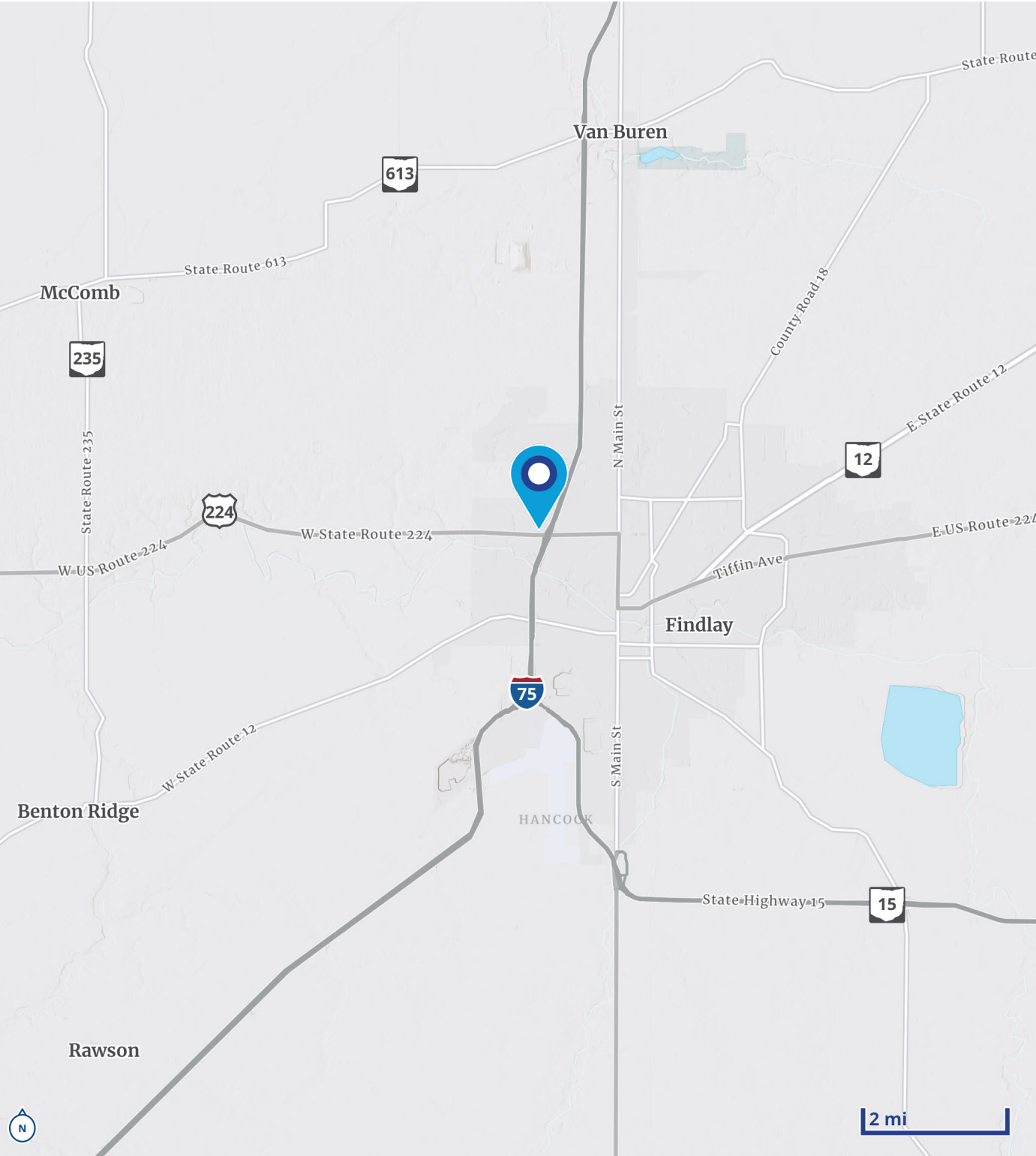
400 W 4<sup>th</sup> Street, Suite 350

Royal Oak, MI 48067

[colliers.com/detroit](http://colliers.com/detroit)



# Location Map

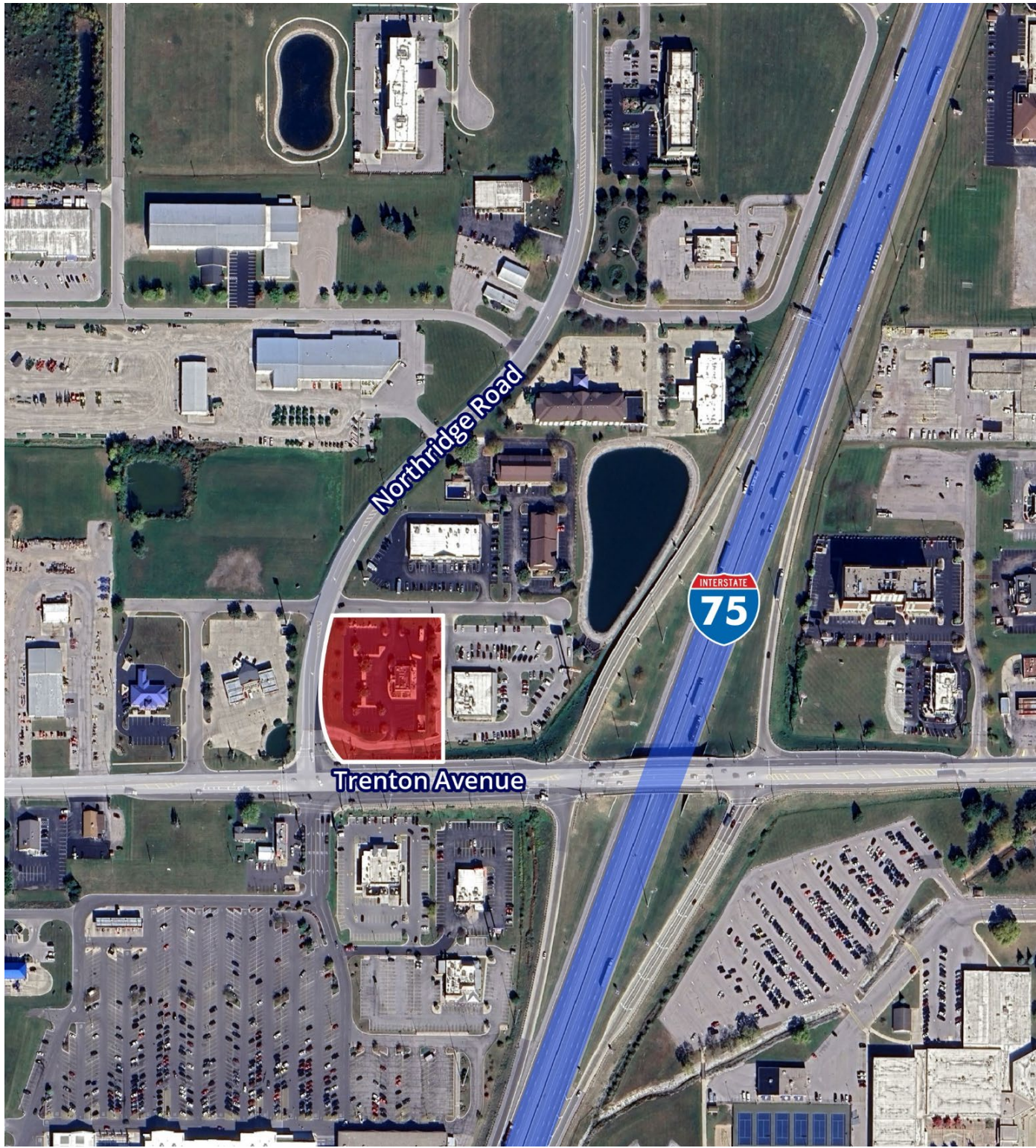




1.6 ACRES FOR LEASE

Colliers

## Aerial Map





1.6 ACRES FOR LEASE



# Merchant Map



# Demographics

CURRENT YEAR SUMMARY	1 MILE RADIUS	3 MILE RADIUS	5 MILE RADIUS
Total Population	4,488	35,070	50,941
Total Households	1,815	15,049	21,996
Total Family Households	971	8,202	12,595
Average Household Size	2.23	2.23	2.24
Median Age	34.6	36.9	39.6
Population Age 25+	2,846	23,822	35,428
2010 – 2021 Population: Annual Growth Rate (CAGR)	-0.66%	-0.31%	-0.06%
2022 – 2023 Population: Annual Growth Rate (CAGR)	-0.26%	0.11%	0.05%
<b>5 YEAR PROJECTED TRENDS: ANNUAL RATE</b>			
Population	0.03%	-0.01%	-0.03%
Households	0.36%	0.26%	0.23%
Families	0.12%	-0.02%	-0.02%
Median Household Income	3.06%	3.31%	2.62%
<b>CURRENT YEAR POPULATION BY SEX</b>			
Male Population / % Male	2,179 / 48.5%	17,380 / 49.6%	25,213 / 49.5%
Female Population / % Female	2,309 / 51.5%	17,690 / 50.4%	25,728 / 50.5%
<b>INCOME &amp; HOUSEHOLDS SUMMARY</b>			
2020 Median Household Income	\$60,673	\$63,645	\$72,234
Average Household Income	\$70,027	\$91,670	\$104,398
Per Capita Income	\$28,480	\$39,351	\$44,871
<b>SUMMARY BUSINESS DATA</b>			
Total Businesses	265	1,652	2,264
Total Daytime Population	6,734	42,015	62,463
Daytime Population: Workers	4,484	24,715	35,998
Daytime Population: Residents	2,250	17,300	25,465

## Data Notes:

- Household population includes persons not residing in group quarters. Average Household Size is the household population divided by total households. Persons in families include the householder and persons related to the householder by birth, marriage, or adoption.
- Income represents the preceding year, expressed in current dollars. Household income includes wage and salary earnings, interest dividends, net rents, pensions, SSI and welfare payments, child support, and alimony.
- Per Capita Income represents the income received by all persons aged 15 years and over divided by the total population.



**Mike Howard**  
419 290 0561  
mike.howard@colliers.com