



# IRONWOOD

COMMERCE CENTER  
PHASE II

**Brand New**  
**Class A Industrial Park**  
*Available starting Q2 2026*



**Delivering 758,254 SF**

12691 NW 42nd Avenue, Opa-Locka, FL 33054

**CBRE**

 **TA REALTY**

# Property Overview

Ironwood Commerce Center II is the newest industrial park in the Central Dade submarket of Miami, and will deliver six buildings, totaling ±758,254 SF.



**Total SF:**  
±758,254



**Loading:**  
Bldgs 1-4 Rear loading  
Bldg 5-6 Front loading



**Trailer Stalls:**  
99



**Clear Height:**  
36'

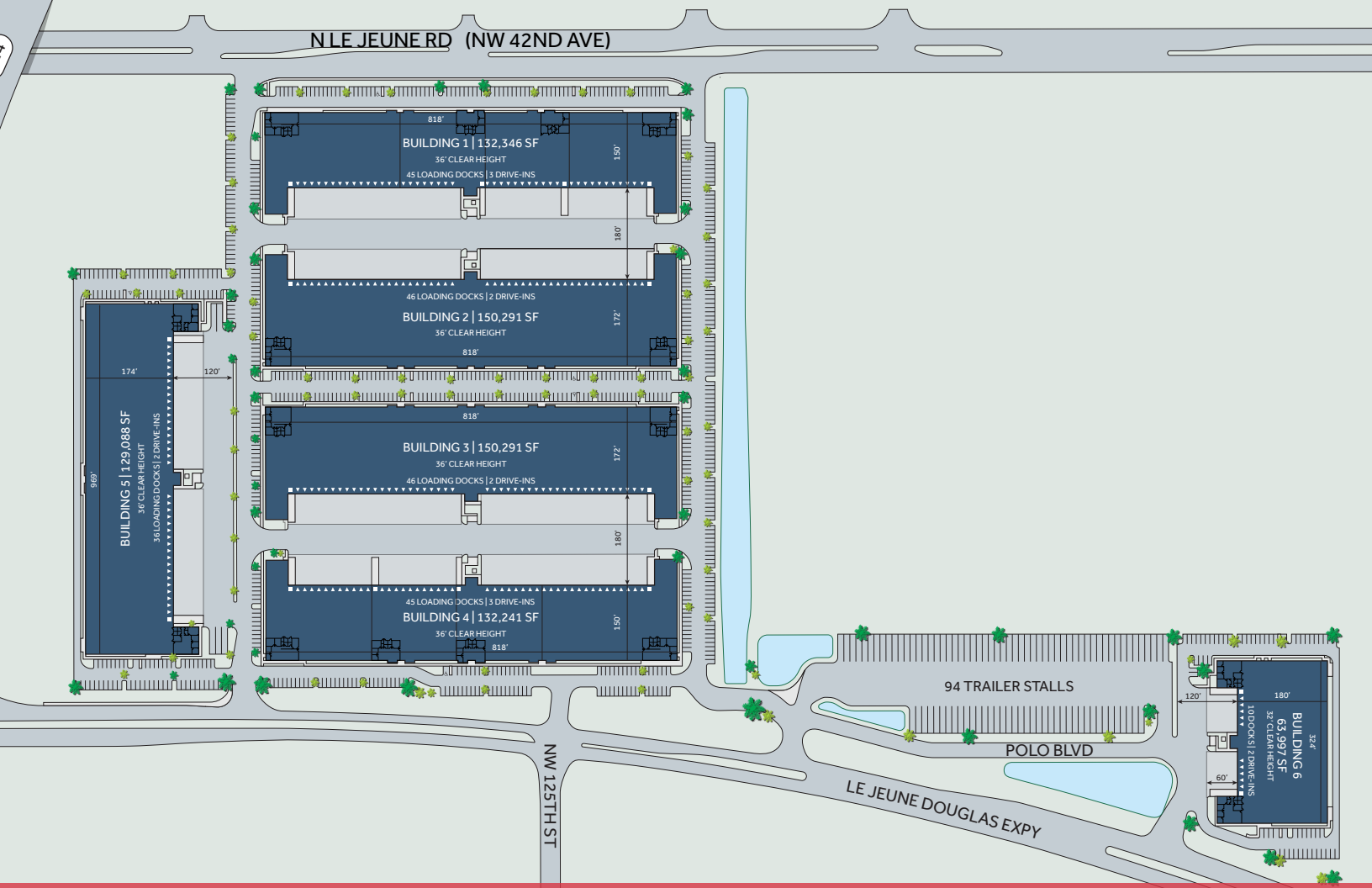


**Truck Court:**  
120'-180' Shared



**Parking:**  
1.00:1,000





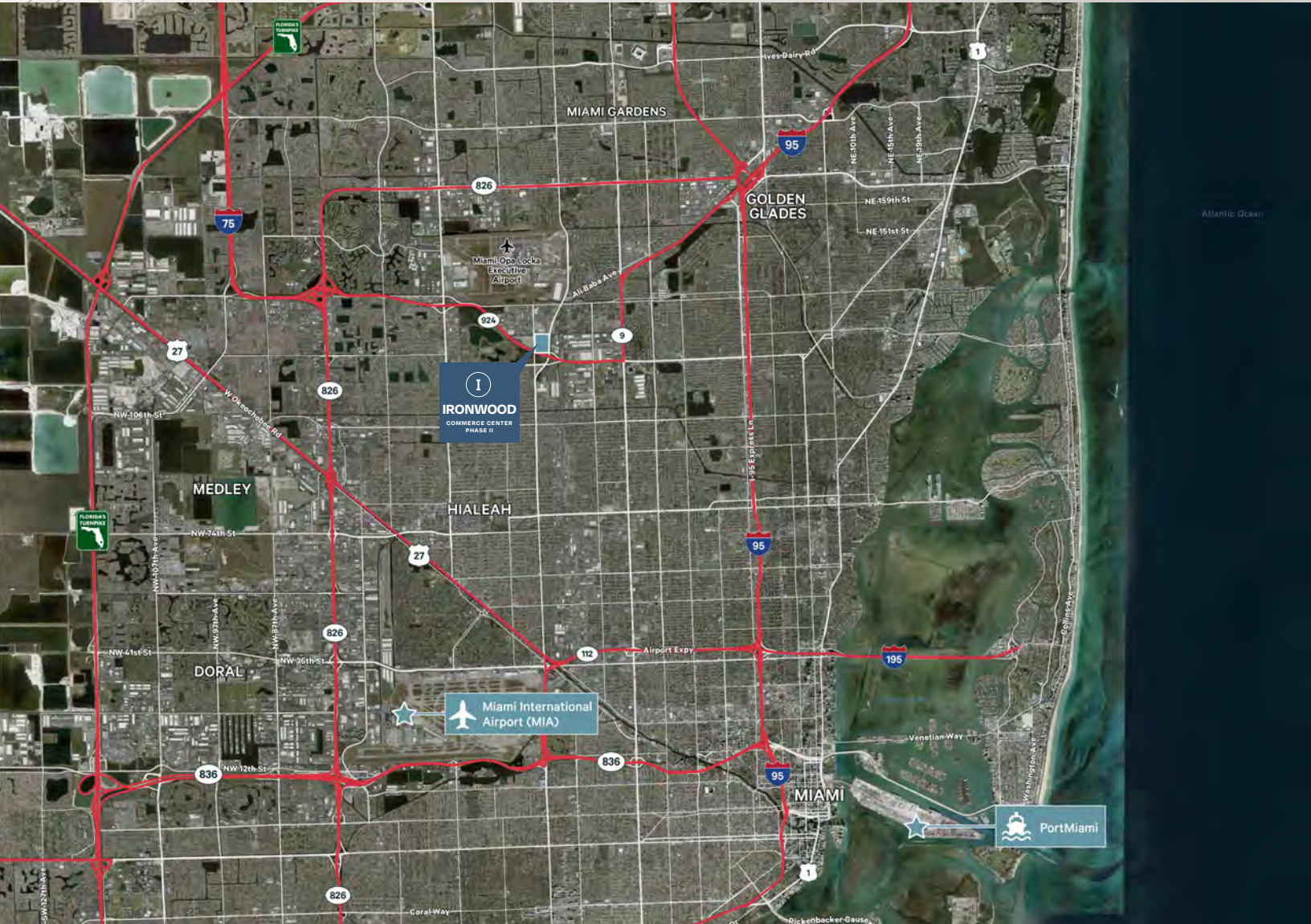
## Property Features

	BLDG 1	BLDG 2	BLDG 3	BLDG 4	BLDG 5	BLDG 6
<b>Building Size</b>	±132,346 SF	±150,291 SF	±150,291 SF	±132,241 SF	±129,088 SF	±63,997 SF
<b>Minimum Divisible</b>	±25,000 SF	±35,000 SF	±35,000 SF	±25,000 SF	±60,000 SF	n/a
<b>Spec Office</b>	±2,382-3,024 SF	±2,881 SF	±2,881 SF	±2,382-3,024 SF	±2,521 SF	±2,526 SF
<b>Clear Height</b>	36'	36'	36'	36'	36'	32'
<b>Loading</b>	45 docks 4 ramps	46 docks 2 ramps	46 docks 2 ramps	45 docks 4 ramps	36 docks 2 ramps	10 docks 2 ramps
<b>Car Parking</b>	109 spaces	137 spaces	170 spaces	126 spaces	131 spaces	62 spaces
<b>Trailer Stalls</b>	0	0	0	0	5	94
<b>Avg Bay Size</b>	8,100 SF	9,300 SF	9,300 SF	8,100 SF	9,400 SF	N/A
<b>Building Depth</b>	150'	172'	172'	150'	174'	180'
<b>Available</b>	Q3 2026	Q4 2026	Q4 2026	Q4 2026	Q4 2026	Q2 2026

I

# IRONWOOD

COMMERCE CENTER  
PHASE II



**Devin White**  
*Executive Vice President*  
+1 305 381 6409  
devin.white@cbre.com

**David Albert**  
*Executive Vice President*  
+1 305 381 6474  
david.albert@cbre.com

**CBRE**

**TA REALTY**