



126 E. HARGETT ST

RALEIGH, NC 27601

5,313 SQ. FT.

**FOR
LEASE**

LISTING BROKER:

WALLACE GREEN
919.630.0180 MOBILE
WGREEN@TRADEMARKPROPERTIES.COM

JENNETH MITCHELL
919.608.0938 MOBILE
JMITCHELL@TRADEMARKPROPERTIES.COM



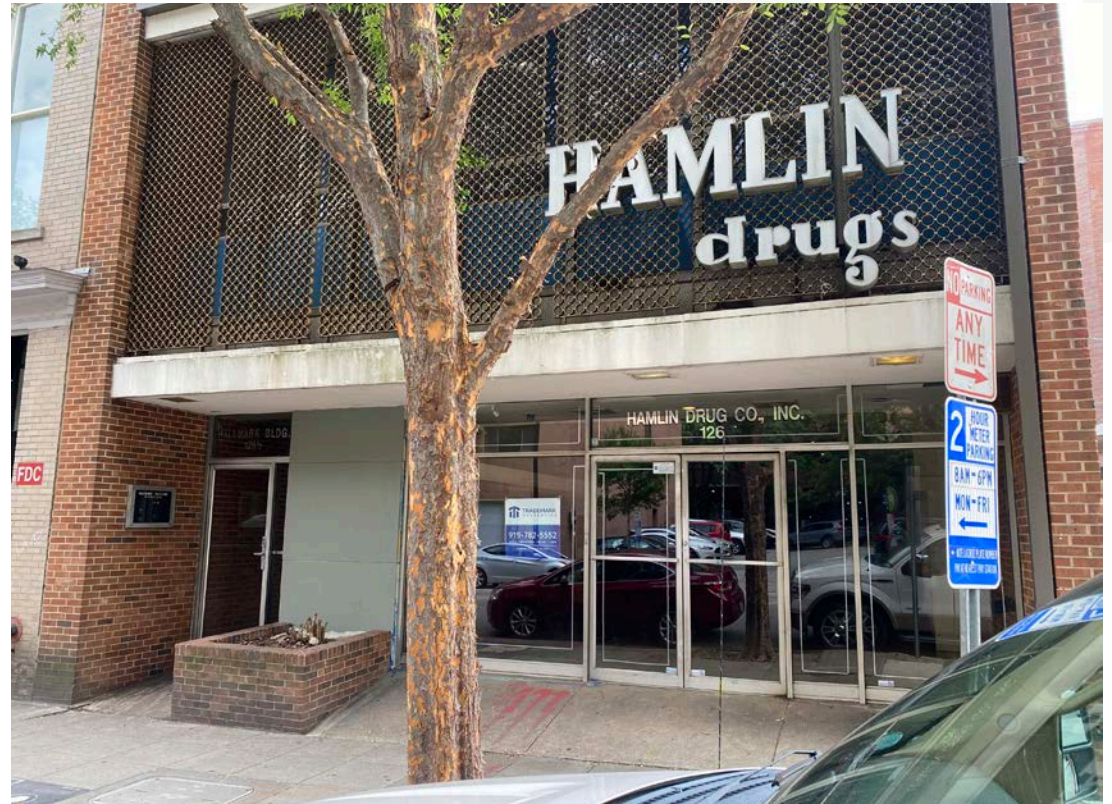
1001 WADE AVENUE SUITE 300, RALEIGH, NC 27605
TRADEMARKPROPERTIES.COM | 919-782-5552

**126 E. HARGETT ST
RALEIGH, NC 27601**

Discover this charming building that offers a blend of usage possibilities. The street-level area is ideally designed for retail, with the basement offering extra room for retail or storage needs. Up on the second level, you'll find an ideal space for a single office tenant, featuring ample natural light and a distinctive character that sets it apart.

PROPERTY HIGHLIGHTS

- » Basement: 1,523 SF
- » Street Level: 1,875 SF
- » Second Level: 1,915 SF
- » Located in the Historic E. Hargett St.
- » Surrounded by Downtown Raleigh staples, Sitti, Beasley's Chicken + Honey, Marbles Kids Museum and IMAX, Moore Square, Watt's & Ward and more



\$34.00/SF, NNN

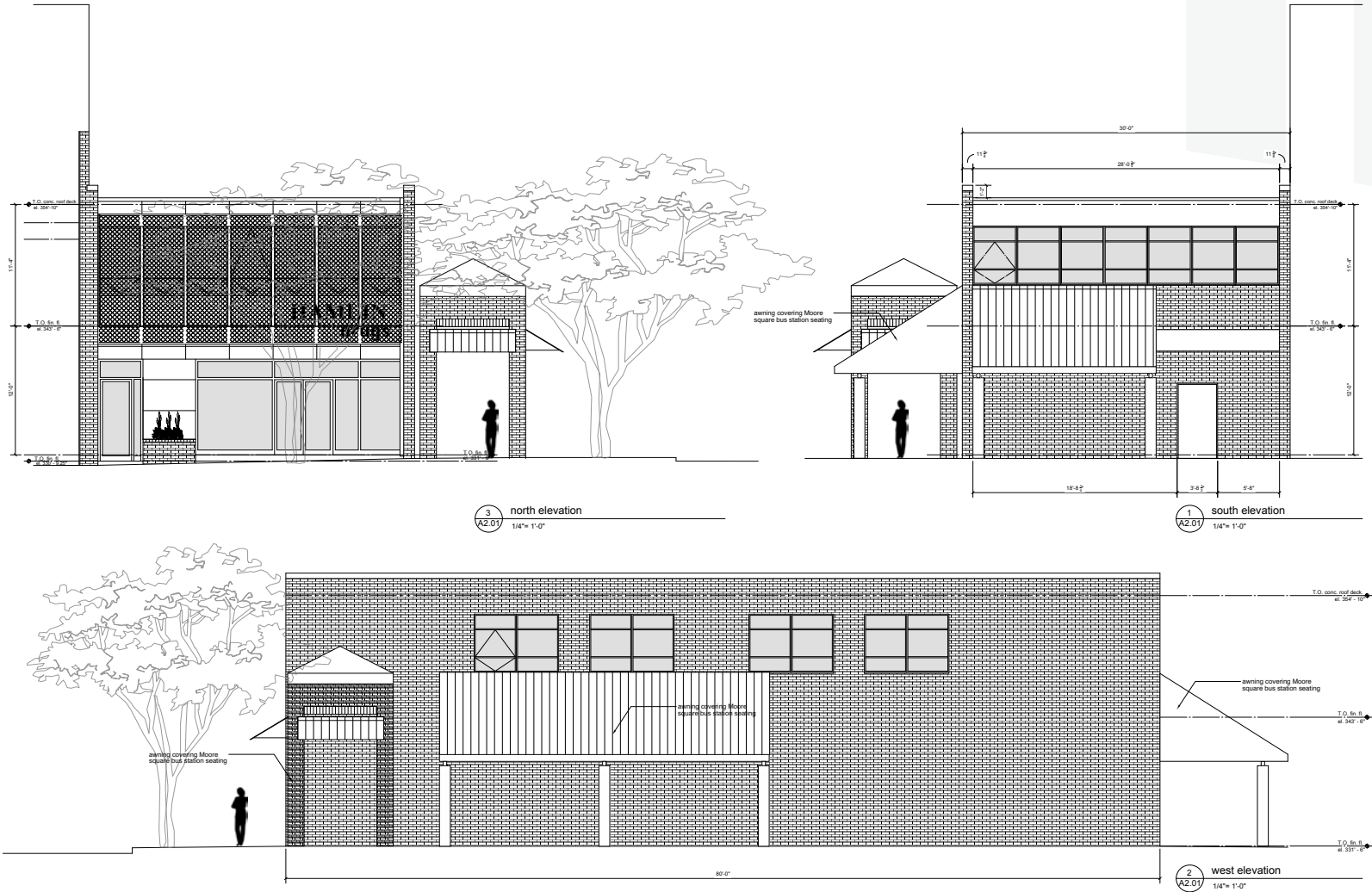
LEASE RATE

WALLACE GREEN
919.630.0180 (M)
WGREEN@TRADEMARKPROPERTIES.COM

JENNETH MITCHELL
919.608.0938 (M)
JMITCHELL@TRADEMARKPROPERTIES.COM

126 E. HARGETT ST
RALEIGH, NC 27601

BUILDING ELEVATION

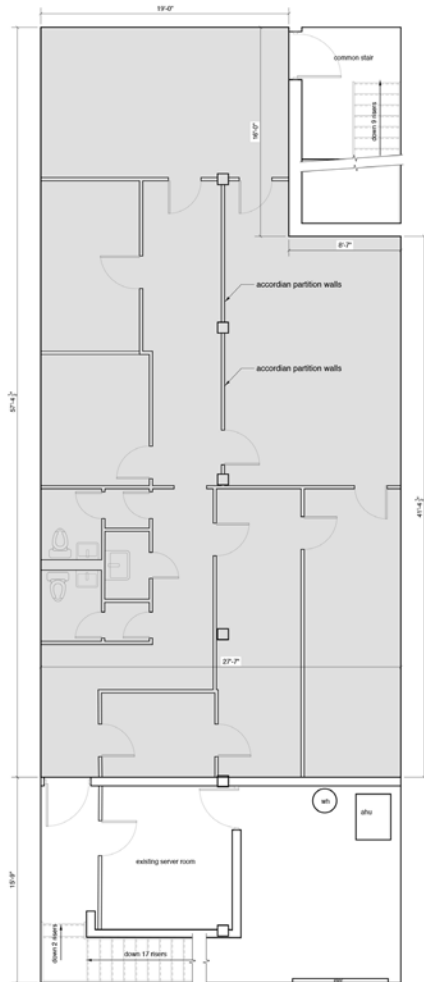


WALLACE GREEN
919.630.0180 (M)
WGREEN@TRADEMARKPROPERTIES.COM

JENNETH MITCHELL
919.608.0938 (M)
JMITCHELL@TRADEMARKPROPERTIES.COM

126 E. HARGETT ST
RALEIGH, NC 27601

BASEMENT LEVEL

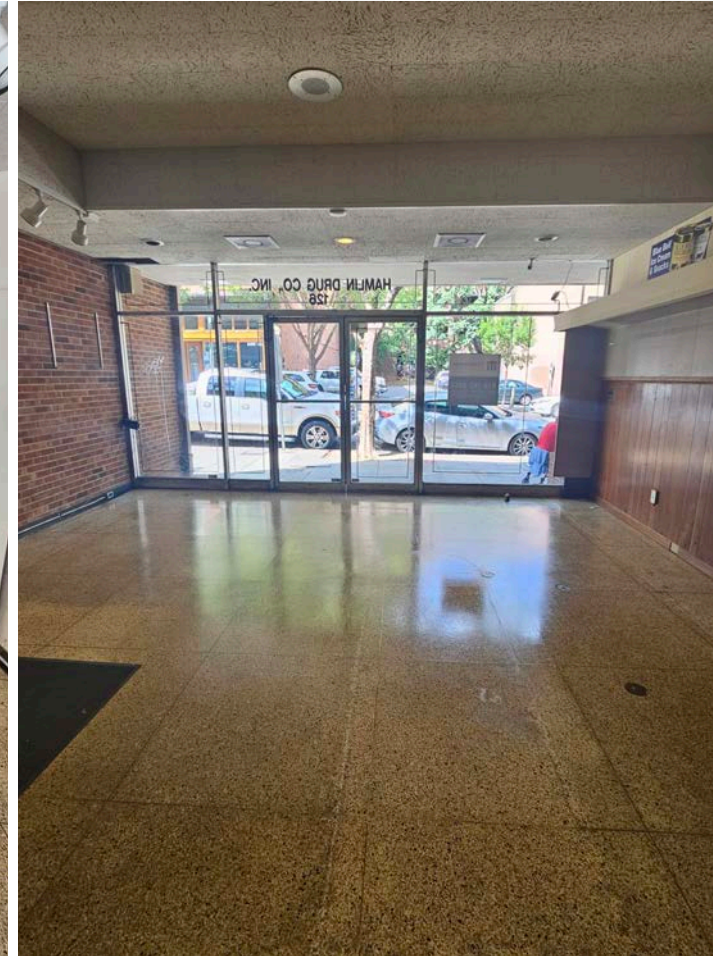
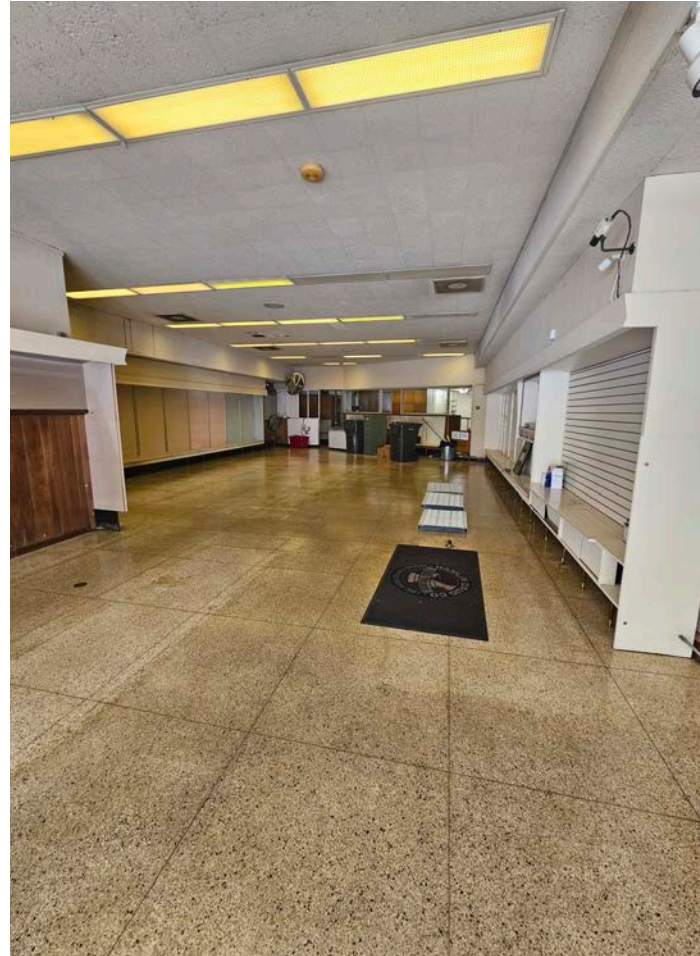
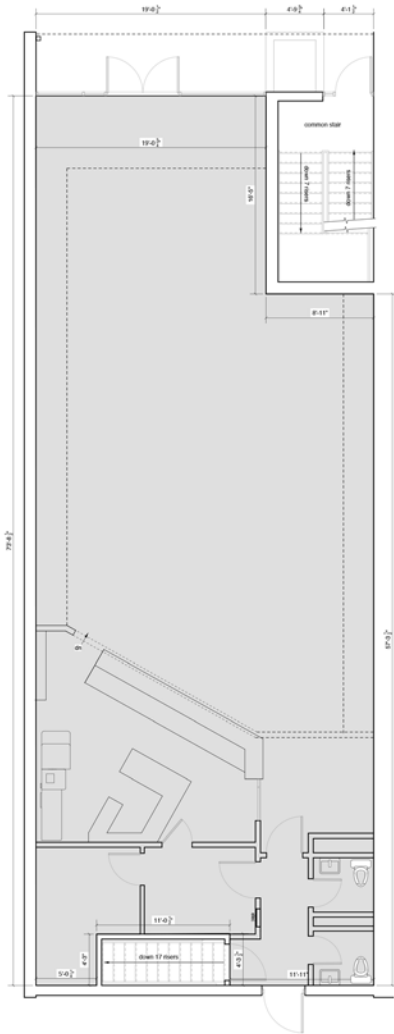


WALLACE GREEN
919.630.0180 (M)
WGREEN@TRADEMARKPROPERTIES.COM

JENNETH MITCHELL
919.608.0938 (M)
JMITCHELL@TRADEMARKPROPERTIES.COM

126 E. HARGETT ST
RALEIGH, NC 27601

STREET LEVEL

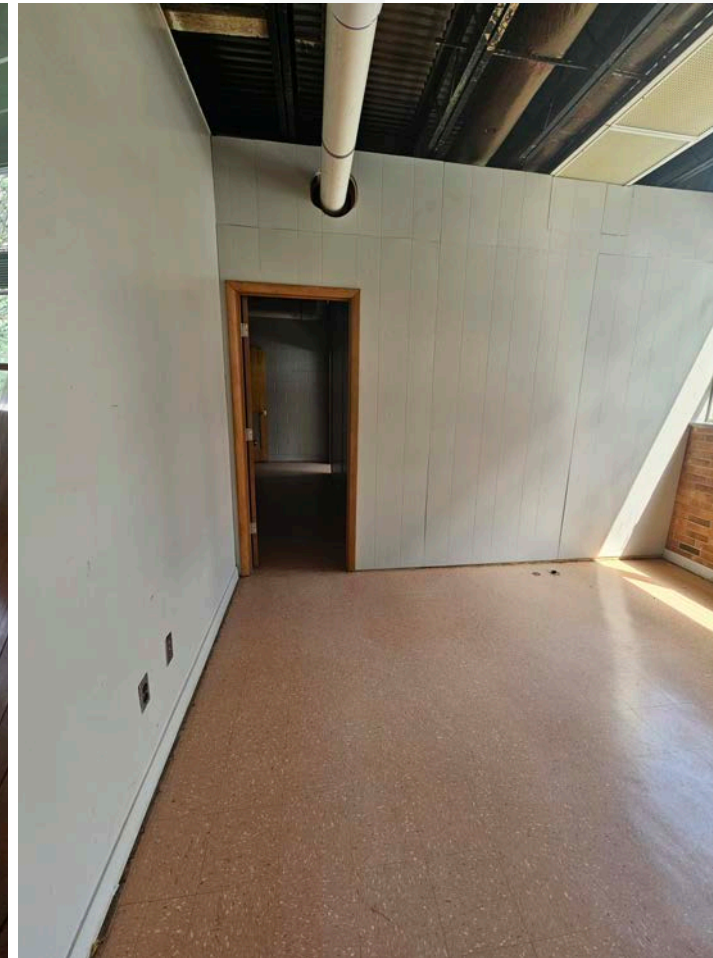
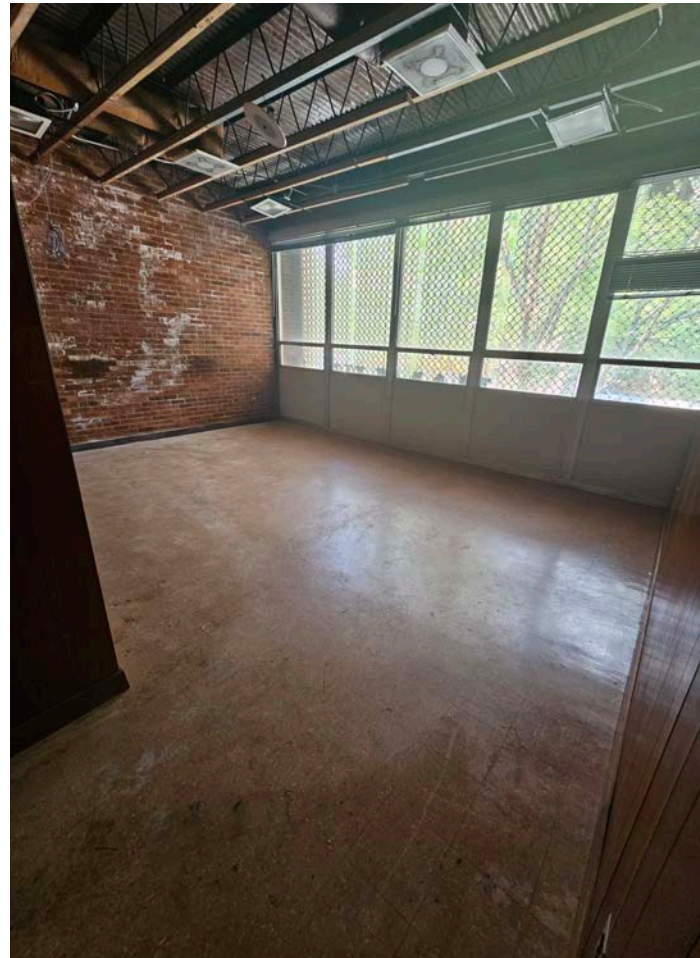
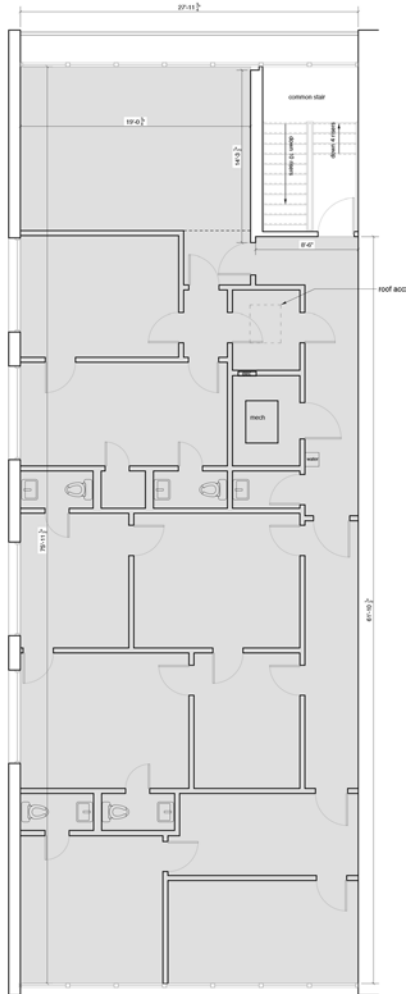


WALLACE GREEN
919.630.0180 (M)
WGREEN@TRADEMARKPROPERTIES.COM

JENNETH MITCHELL
919.608.0938 (M)
JMITCHELL@TRADEMARKPROPERTIES.COM

126 E. HARGETT ST
RALEIGH, NC 27601

SECOND LEVEL



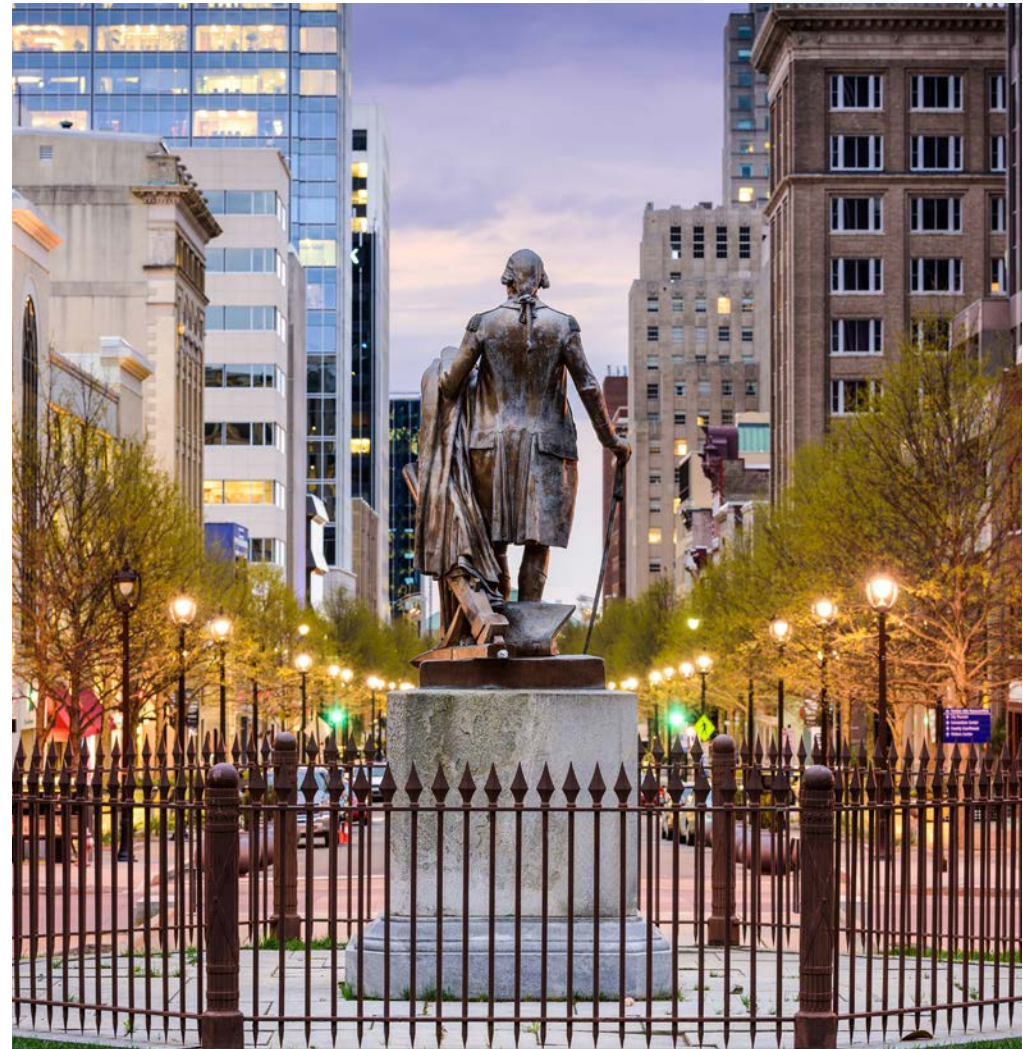
WALLACE GREEN
919.630.0180 (M)
WGREEN@TRADEMARKPROPERTIES.COM

JENNETH MITCHELL
919.608.0938 (M)
JMITCHELL@TRADEMARKPROPERTIES.COM

126 E. HARGETT ST
RALEIGH, NC 27601

RALEIGH ACCOLADES

- **#1 Most Livable City**
- *Far & Wide (2023)*
- **Best Metro Areas for Growth**
- *American Growth Project Report (2023)*
- **#3 Hottest Job Markets in America**
- *Wall Street Journal (2022)*
- **#1 Best City for Working Women**
- *ApartmentList (2022)*
- **America's Top State for Business**
- *CNBC (2022)*
- **#1 America's Best Place to Live**
- *Bankrate (2021)*
- **#3 Among Safest Large Cities**
- *AdvidsorSmith (2021)*



WALLACE GREEN
919.630.0180 (M)
WGREEN@TRADEMARKPROPERTIES.COM

JENNETH MITCHELL
919.608.0938 (M)
JMITCHELL@TRADEMARKPROPERTIES.COM

LISTING BROKER:

WALLACE GREEN

919.630.0180 MOBILE
WGREEN@TRADEMARKPROPERTIES.COM

JENNETH MITCHELL

919.608.0938 MOBILE
JMITCHELL@TRADEMARKPROPERTIES.COM



**TRADEMARK
PROPERTIES**

THIS IS OUR TRADEMARK

THE INFORMATION CONTAINED HEREIN WAS OBTAINED FROM SOURCES BELIEVED RELIABLE; HOWEVER, TRADEMARK PROPERTIES MAKES NO GUARANTEES, WARRANTIES, OR REPRESENTATIONS AS TO THE COMPLETENESS OR ACCURACY THEREOF. THE PRESENTATION OF THIS PROPERTY IS SUBMITTED SUBJECT TO ERRORS, OMISSIONS, CHANGES OF PRICE OR CONDITIONS PRIOR TO SALE OR LEASE, OR WITHDRAWAL WITHOUT NOTICE.