

OFFICE CONDO FOR SALE

PRICE REDUCTION - ~~\$1,275,000 (\$440/SF)~~
\$1,140,000 (\$393/SF)



📍 8111 East Thomas Road, Scottsdale, AZ 85251

FEATURES

OFFERING SUMMARY

Asking Price: ~~\$1,275,000 (\$440/SF)~~
\$1,140,000 (393/SF)

Building Size: 2,895 SF

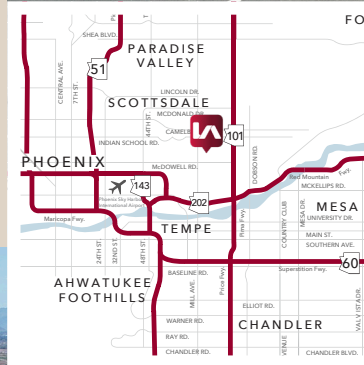
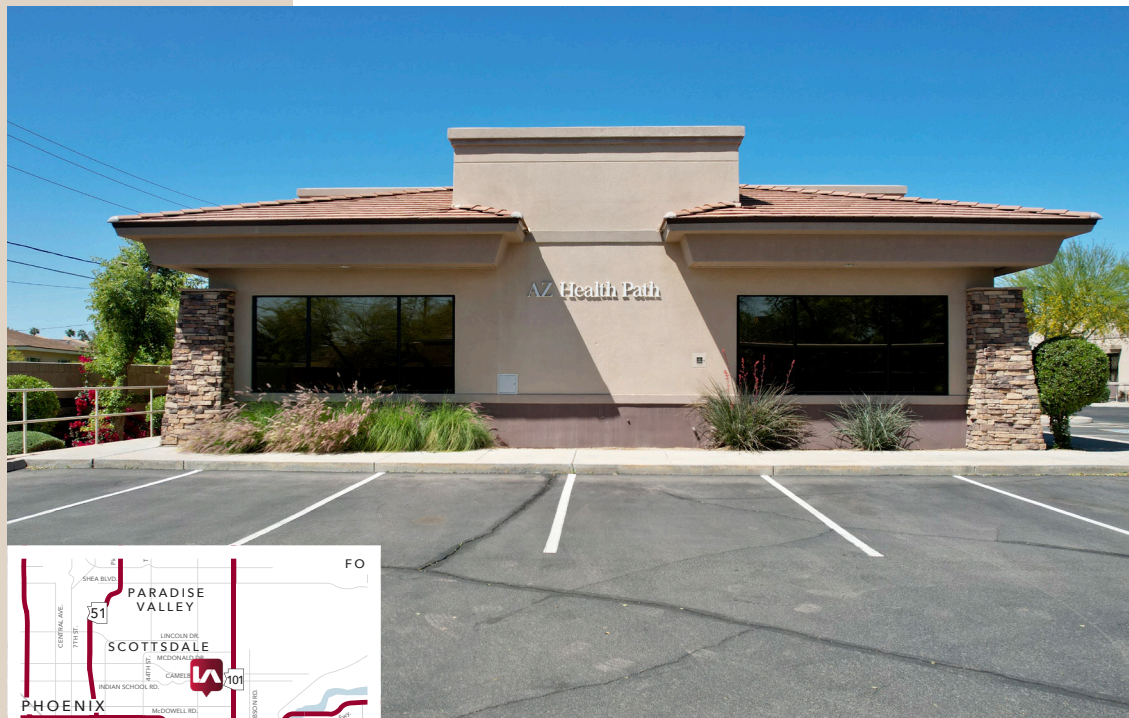
Year Built: 2004

APN: 131-03-316

Zoning: S-R, City of Scottsdale

Parking: 4.3:1000 (4 covered spaces)

HOA Dues: \$418.94/Monthly



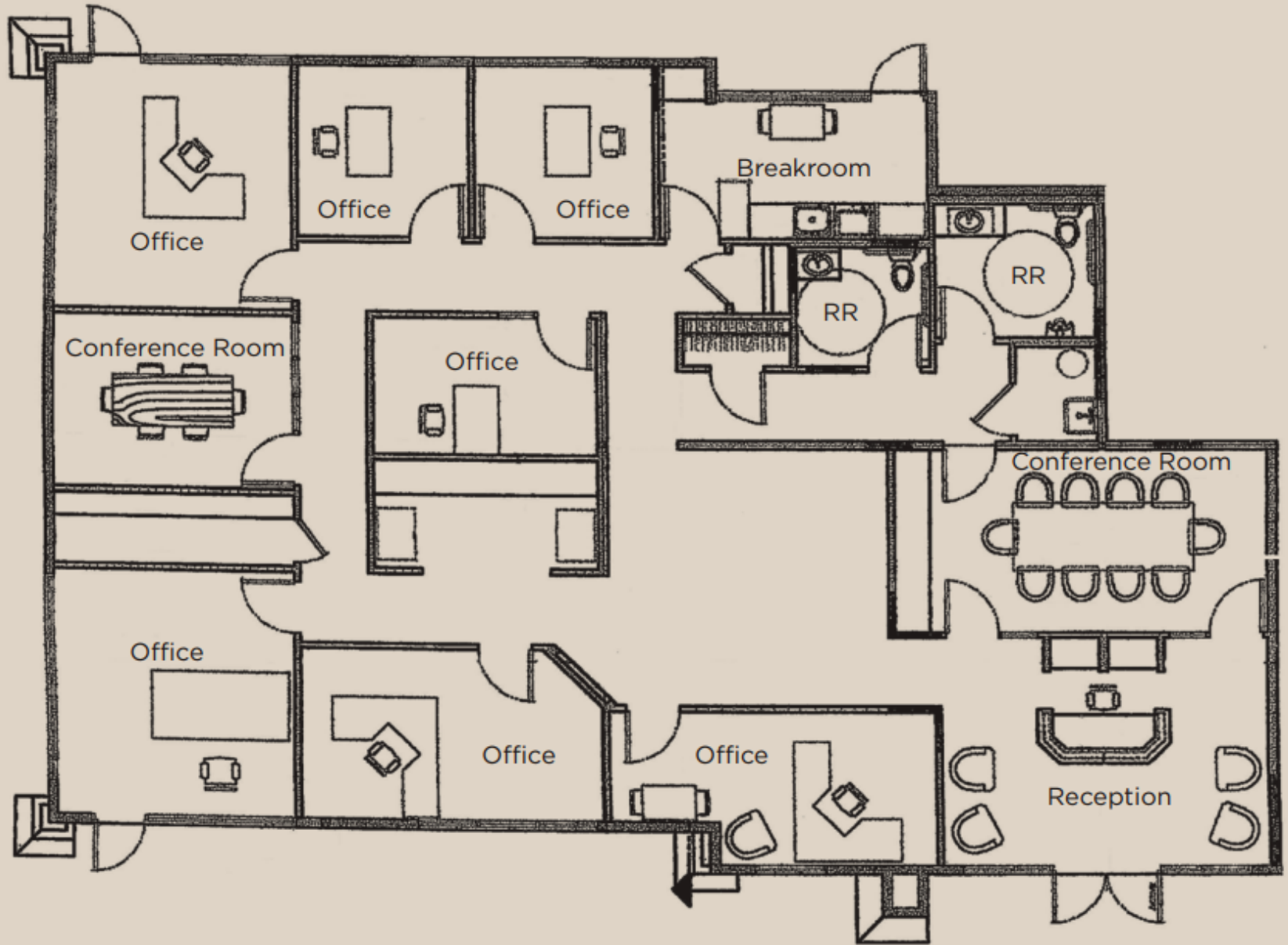
PROPERTY HIGHLIGHTS

- Move-in Ready
- Private Patio
- Highly Efficient Floorplan
- Easily Accessible, Pull Up, Visitor Parking
- Great Signage Opportunity Fronting Thomas Road
- Numerous Walkable Amenities
- Prominent Freeway Access (Minutes From Loop 101)
- Minutes from Old Town Scottsdale



PHOTOS

FLOOR PLAN



AERIAL



AMENITIES

