

Commercial | For Lease

ROYAL LEPAGE®
COMMERCIAL™



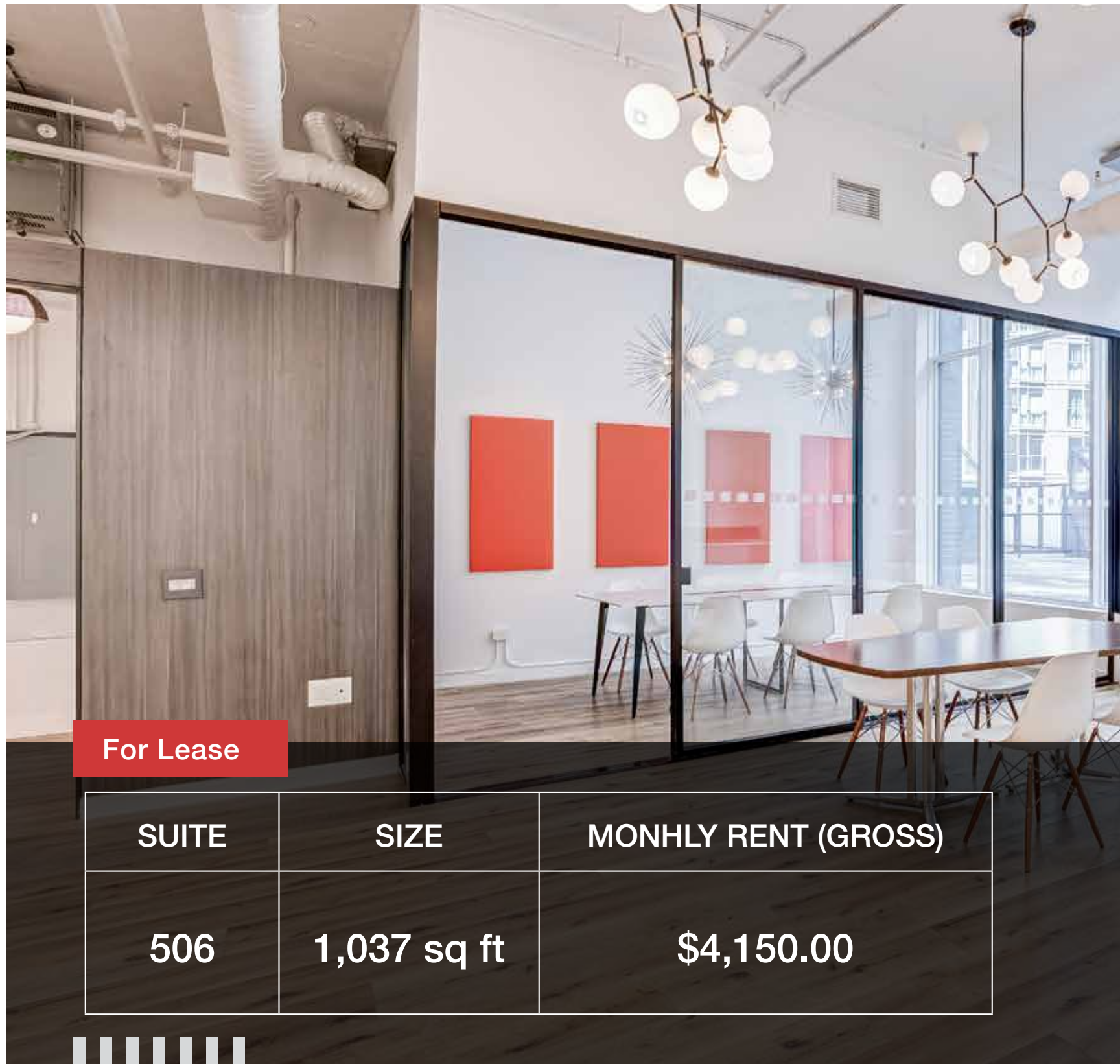
Premium Office Condos

130
Queens Quay E
Suite 506 • Toronto, ON

ILIYAN RASHID
Sales Representative
iliyan@royallepagecommercial.com

WIL IRONS
Senior Vice President
wil.iron@royallepagecommercial.com

ROYAL LEPAGE **Signature**
INDEPENDENTLY OWNED & OPERATED REAL ESTATE BROKERAGE



For Lease

SUITE	SIZE	MONTHLY RENT (GROSS)
506	1,037 sq ft	\$4,150.00

Overview

PREMIUM TOP-LEVEL OFFICES OVERLOOKING THE CITY

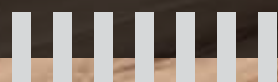
Fantastic open-concept, bright office space available at Daniels 130 Queens Quay East. This modern, built-out suite features a welcoming reception area, kitchenette, one boardroom, one smaller meeting room, and an open area designed for collaborative workstations.

The interior layout includes glass-front offices, impressive 12'4" ceiling height, and a flexible, modular configuration ideal for both team collaboration and private work. The thoughtfully designed space is well suited for companies seeking a dynamic touchdown office or headquarters environment.

Located on the 5th floor, the suite is positioned on the same level as the building's outdoor patio and shared amenity spaces, accessible via an outdoor walkway connecting to the East Tower.

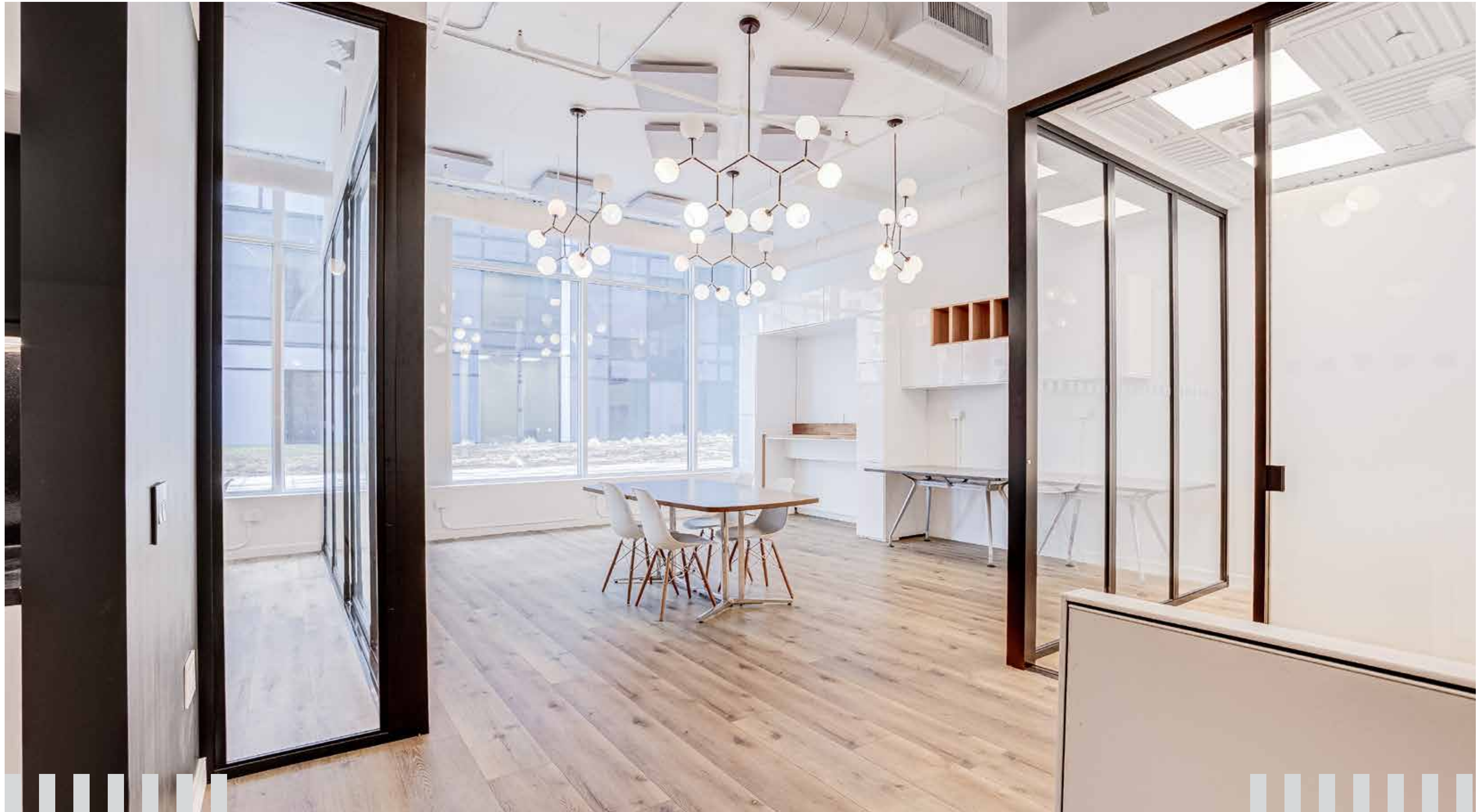
Tenants benefit from a premium building environment with exceptional amenities, including a rooftop terrace, state-of-the-art boardrooms, and additional shared amenities on the 9th floor (East Tower).

Situated in Toronto's vibrant South Core / Waterfront district, the property is just steps from Sugar Beach, Union Station, St. Lawrence Market, and major highways, offering outstanding connectivity and convenience in one of the city's most sought-after office nodes.







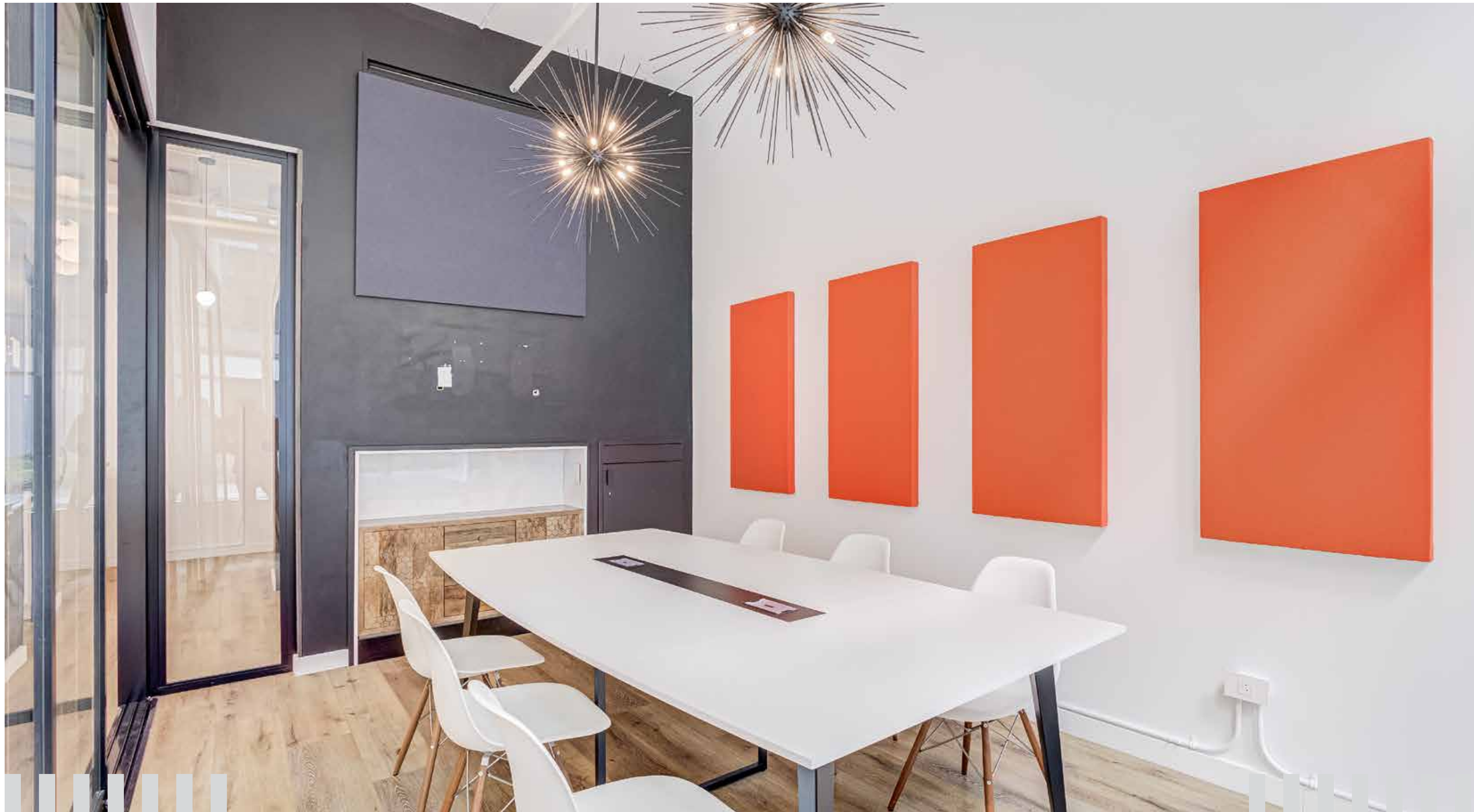




130 Queens Quay E #506

SUITE 506

FOR LEASE

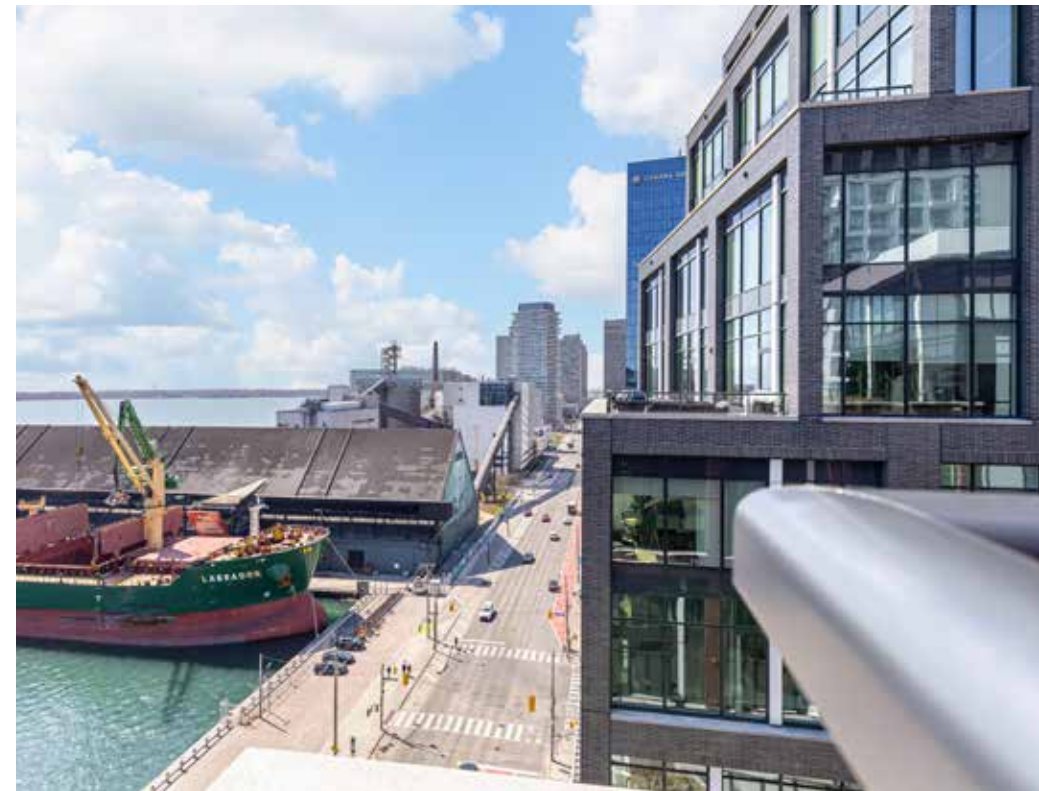


130 Queens Quay E #506

SUITE 506

FOR LEASE





Location

Ideally situated in Toronto's dynamic South Core waterfront district at 130 Queens Quay East, this location offers exceptional connectivity and convenience:

- Just 6 minutes to Union Station via subway, GO Transit, and VIA Rail
- Streetcar service along Queens Quay, with the future Waterfront East LRT planned
- Quick access to the Gardiner Expressway and Lake Shore Boulevard
- Walking distance to Sugar Beach, St. Lawrence Market, and Toronto's Financial District

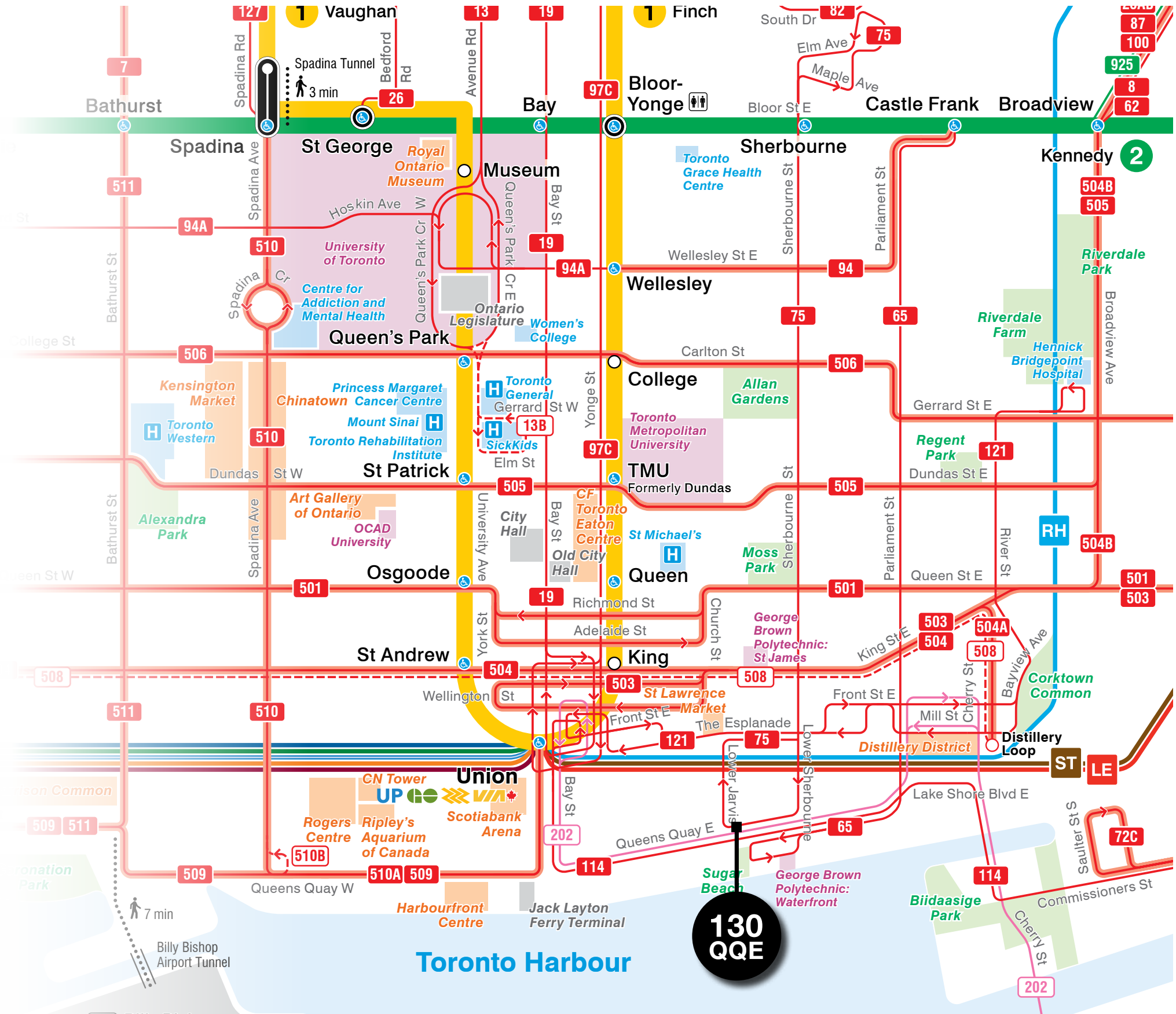
SUBWAY LINES

- Regular station
- ⊙ Interchange station
- ⊙ Intermodal station
Connects with other transit agencies

LOCAL SERVICE

- 501 Ten-Minute Network
- 30 Regular service
- 119 Limited service
*Operates at limited times of day.
Frequency of service varies by route.
Some service does not operate during all periods.*
- 905 Express Network
- 200 Seasonal service
- 310 Blue Night Network

- Streetcar loop
- Regional train station
- ✈ Airport
- H Hospital
24-hour emergency services
- Health care
- Point of interest
- Post-secondary school
- Transportation/government
- Park



Commercial | For Lease

ROYAL LEPAGE®
COMMERCIAL™

130 QUEENS QUAY E #506

Premium Office Condo For Lease

130 QUEENS QUAY EAST, TORONTO



For more information, please contact:

ILIYAN RASHID
Sales Representative
iliyan@royallepagecommercial.com

WIL IRONS
Senior Vice President
wil.iron@royallepagecommercial.com

ROYAL LEPAGE **Signature**
INDEPENDENTLY OWNED & OPERATED REAL ESTATE BROKERAGE

Not intended to solicit sellers or buyers currently under contract. Prospective purchasers should satisfy themselves as to the accuracy of the information contained in this feature sheet. All measurements are approximate. The statements contained herein are based on sources which we believe are reliable, but for which we assume no responsibility. All Rights Reserved.