

# CEDAR POINT, in Silverstone Park

2078 S. SILVERSTONE WAY, MERIDIAN, ID 83642



## PROPERTY FEATURES

BLDG TYPE: Office  
BLDG SIZE: 47,097 Square Feet  
FLOORS: Single Story  
PARKING: 5/1,000 SF Leased  
LEASE TYPE: Full Service, Less Tenant Janitorial  
ZONING: CC

## BUILDING HIGHLIGHTS

- Centrally located in the Boise Valley, I-84 (Exit 46) less than one mile
- Professional Silverstone Park, provides service and food amenities
- Private entry into tenant space
- Excellent building signage available
- Generous parking included
- Proportionate use of Silverstone Amenity Center five (5) meeting and board rooms

## AVAILABLE SPACES

41,235 SF Remaining

Divisible to approximately 4,000 RSF

## LOCATED



**Call: 208-322-7300**

[WWW.SUNDANCECO.COM](http://WWW.SUNDANCECO.COM)



# CEDAR POINT, in Silverstone Park

2078 S. SILVERSTONE WAY, MERIDIAN, ID 83642



---

**Call: 208-322-7300**

[WWW.SUNDANCECO.COM](http://WWW.SUNDANCECO.COM)





# CEDAR POINT, in Silverstone Park

2078 S. SILVERSTONE WAY, MERIDIAN, ID 83642

Silverstone Park provides abundant access points which substantially affects ease of access to and from your business. This development is nearly completely built out and you will find excellent internal traffic flow for employees and guests.

## SILVERSTONE PARK

Twelve (12) Traffic Outlets

Two (2) Traffic Light Controlled



**Call: 208-322-7300**

[WWW.SUNDANCECO.COM](http://WWW.SUNDANCECO.COM)

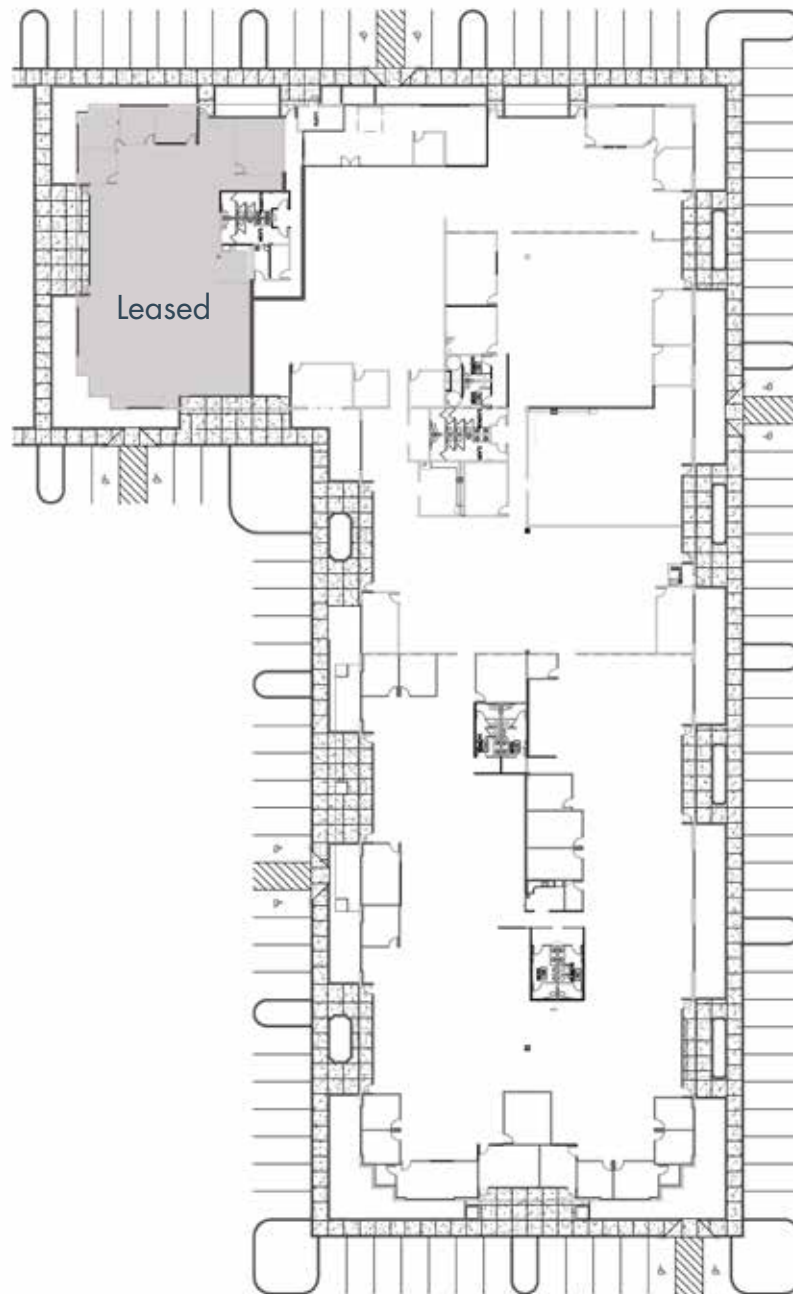


# CEDAR POINT, in Silverstone Park

2078 S. SILVERSTONE WAY, MERIDIAN, ID 83642

41,235 SF Available (divisible to 4,000 SF)

8'W x 9'H  
OH Door



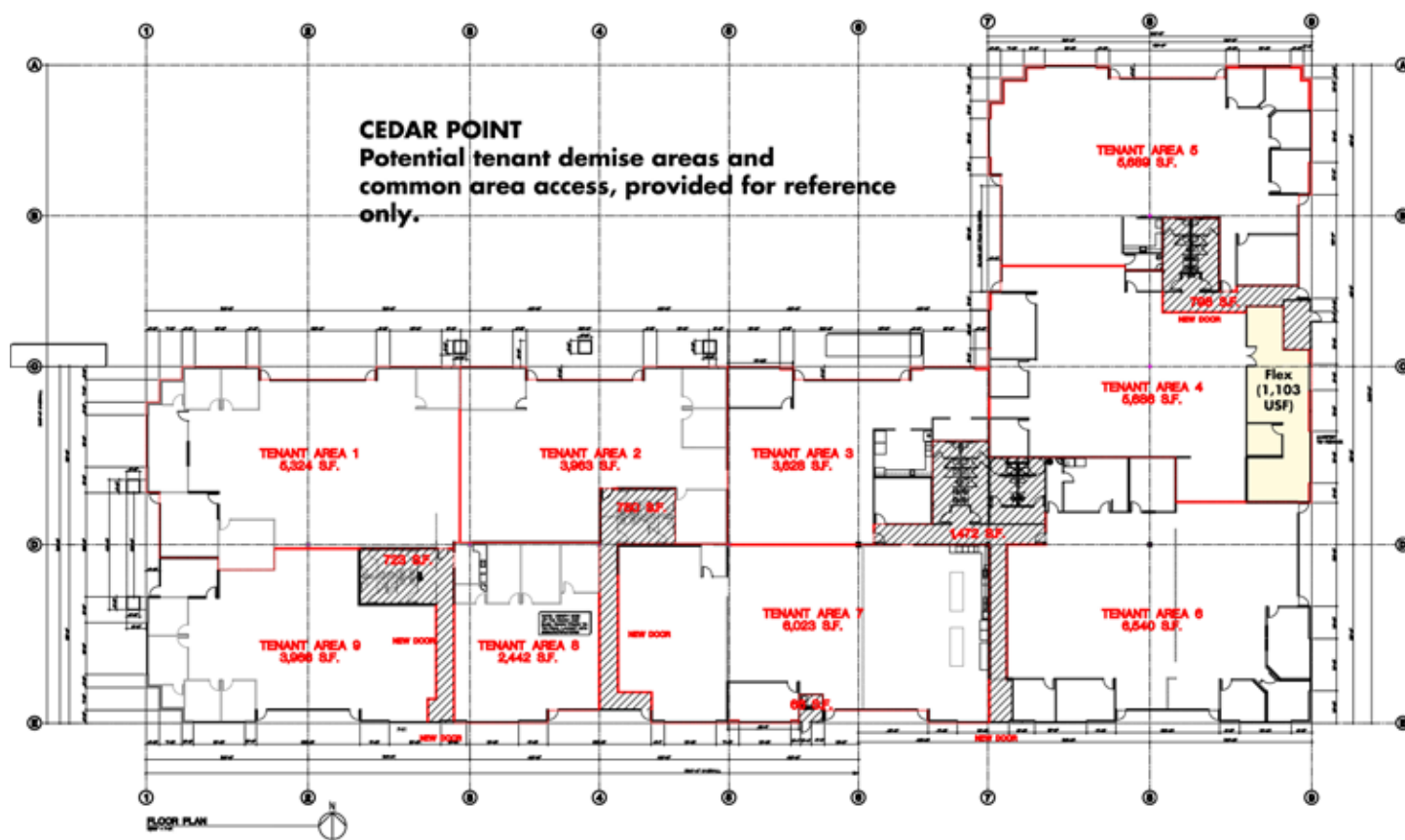
---

**Call: 208-322-7300**

[WWW.SUNDANCECO.COM](http://WWW.SUNDANCECO.COM)



2078 S. SILVERSTONE WAY, MERIDIAN, ID 83642



**Call: 208-322-7300**

WWW.SUNDANCECO.COM

