

# SOUTHWEST MEDICAL PLAZA I

7100 Oakmont Blvd.  
Fort Worth, TX 76132

Healthpeak® | **DOC**  
LISTED  
NYSE



Leasing Information:  
214.461.2383

## Lincoln

|  |  |  |
|--|--|--|
| <b>Banks Newton</b>                                  | <b>Douglas Maclay</b>                                | <b>Elizabeth Madden</b>                              |
| 214.461.2388   | 214.461.2371   | 214.461.2366   |
| <a href="mailto:bnewton@lpc.com">bnewton@lpc.com</a> | <a href="mailto:dmaclay@lpc.com">dmaclay@lpc.com</a> | <a href="mailto:emadden@lpc.com">emadden@lpc.com</a> |

Lincoln Property Company  
8140 Walnut Hill Lane Suite 700  
Dallas, TX 75231

[www.lpc.com](http://www.lpc.com)



# SOUTHWEST MEDICAL PLAZA I

7100 Oakmont Blvd. | Fort Worth, TX 76132

Outpatient Medical For Lease

1,578 - 2,948 SF



## Property Overview

This off-campus Outpatient Medical Building is ideally positioned along the Chisholm Trail growth corridor. Residing minutes away from Texas Health Harris Methodist Southwest Hospital, TCU, and the Fort Worth Medical District, Southwest Medical Plaza I offers convenience for patients and staff.

## Property Highlights

- Immediate access to the Chisholm Trail tollway and southwest Fort Worth growth corridor
- Convenient access to Texas Health Harris Methodist Southwest Hospital, Fort Worth Medical District, and TCU
- No Use Restrictions
- Free Parking for Patients & Staff
- Adjacent to Baylor Scott & White Surgicare

## Availabilities

|           |          |
|-----------|----------|
| Suite 202 | 1,578 SF |
| Suite 204 | 1,752 SF |
| Suite 207 | 2,948 SF |

**Banks Newton**   **Douglas Maclay**   **Elizabeth Madden**

214.461.2388  
bnewton@lpc.com

214.461.2371  
dmaclay@lpc.com

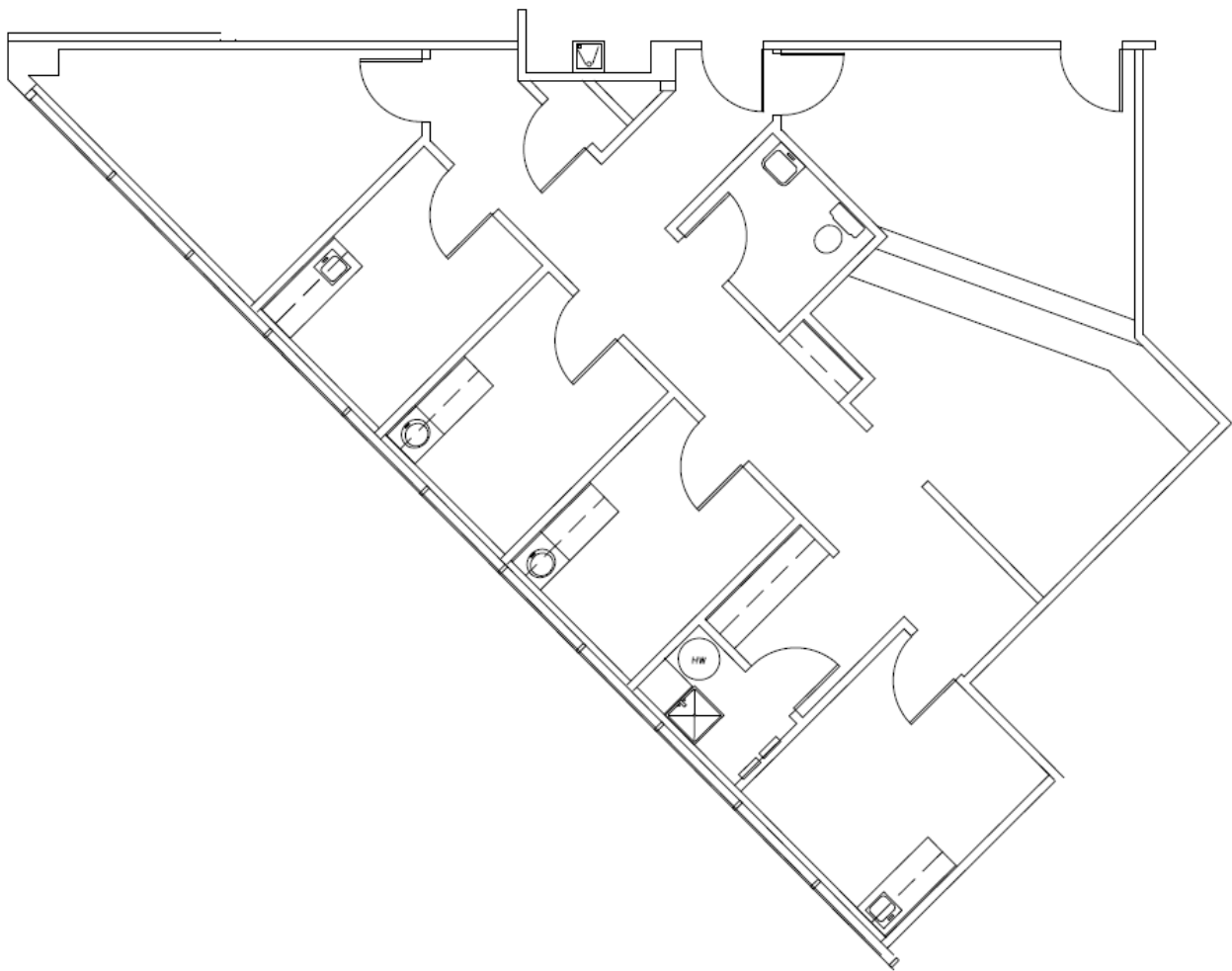
214.461.2366  
emadden@lpc.com

**Lincoln**

# SOUTHWEST MEDICAL PLAZA I

7100 Oakmont Blvd. | Fort Worth, TX 76132

Suite 202  
1,578 SF



| Suite     | Size     |
|-----------|----------|
| Suite 202 | 1,578 SF |

|  |  |  |
|--|--|--|
| <b>Banks Newton</b><br>214.461.2388<br>bnewton@lpc.com | <b>Douglas Maclay</b><br>214.461.2371<br>dmaclay@lpc.com | <b>Elizabeth Madden</b><br>214.461.2366<br>emadden@lpc.com |
|--|--|--|

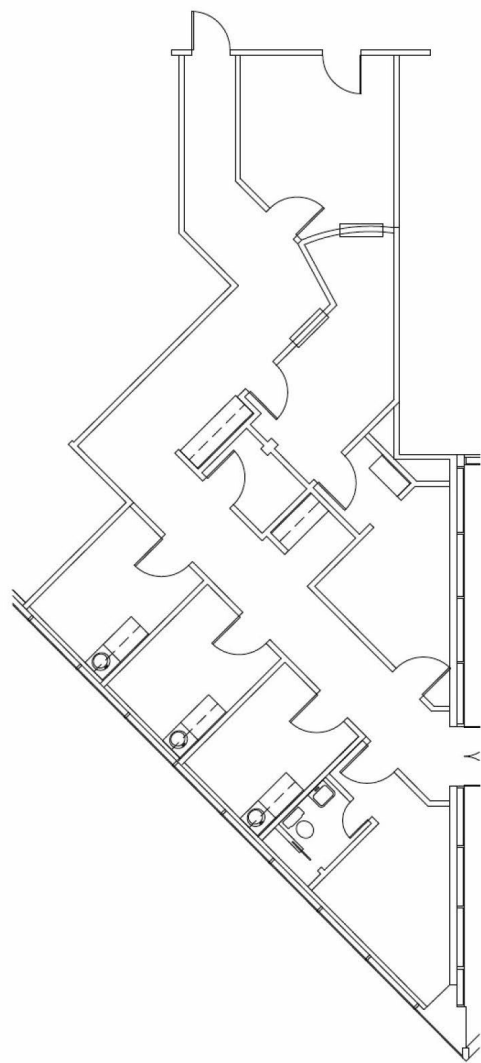
Lincoln

# SOUTHWEST MEDICAL PLAZA I

7100 Oakmont Blvd. | Fort Worth, TX 76132

Suite 204

1,752 SF



| Suite     | Size     |
|-----------|----------|
| Suite 204 | 1,752 SF |

**Banks Newton**  
214.461.2388  
bnewton@lpc.com

**Douglas Maclay**  
214.461.2371  
dmaclay@lpc.com

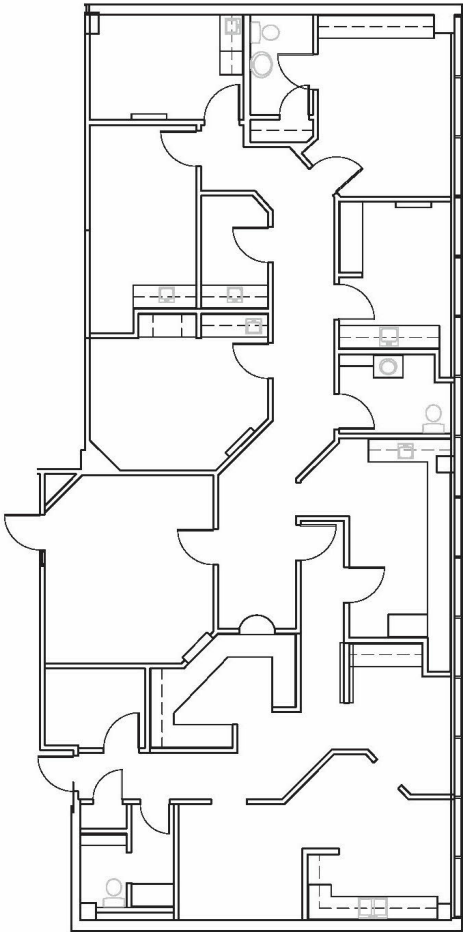
**Elizabeth Madden**  
214.461.2366  
emadden@lpc.com

Lincoln

# SOUTHWEST MEDICAL PLAZA I

7100 Oakmont Blvd. | Fort Worth, TX 76132

Suite 207  
2,948 SF



| Suite     | Size     |
|-----------|----------|
| Suite 207 | 2,948 SF |

|  |  |  |
|--|--|--|
| <b>Banks Newton</b><br>214.461.2388<br>bnewton@lpc.com | <b>Douglas Maclay</b><br>214.461.2371<br>dmaclay@lpc.com | <b>Elizabeth Madden</b><br>214.461.2366<br>emadden@lpc.com |
|--|--|--|

Lincoln



# SOUTHWEST MEDICAL PLAZA I

7100 Oakmont Blvd. | Fort Worth, TX 76132

## Nearby Amenities



**Banks Newton**  
214.461.2388  
bnewton@lpc.com

**Douglas Maclay**  
214.461.2371  
dmaclay@lpc.com

**Elizabeth Madden**  
214.461.2366  
emadden@lpc.com

**Lincoln**





# SOUTHWEST MEDICAL PLAZA I

7100 Oakmont Blvd.  
Fort Worth, TX 76132

Healthpeak® | DOC  
LISTE  
NYSE

Leasing Information:  
214.461.2383

**Banks Newton**  
214.461.2388  
bnewton@lpc.com

**Douglas Maclay**  
214.461.2371  
dmaclay@lpc.com

**Elizabeth Madden**  
214.461.2366  
emadden@lpc.com

# Lincoln

Lincoln Property Company  
8140 Walnut Hill Lane Suite 700  
Dallas, TX 75231

[www.lpc.com](http://www.lpc.com)