



Site

KANSAS RIVER

W 43RD STREET

7

# Industrial Land for Sale

Parcel size:

47.78± ACRES

FOR SALE | W 43rd Street & Powell Drive | Shawnee, Kansas

## Site Details

Gross Total Acreage	47.78±
Current Zoning	Agricultural (planned industrial)
Access	Ease of access via W 43rd Street to K-7
Property Use	Ready for industrial development site
Flood Plain	Located in 500 year flood plain
Price	\$1.15 PSF

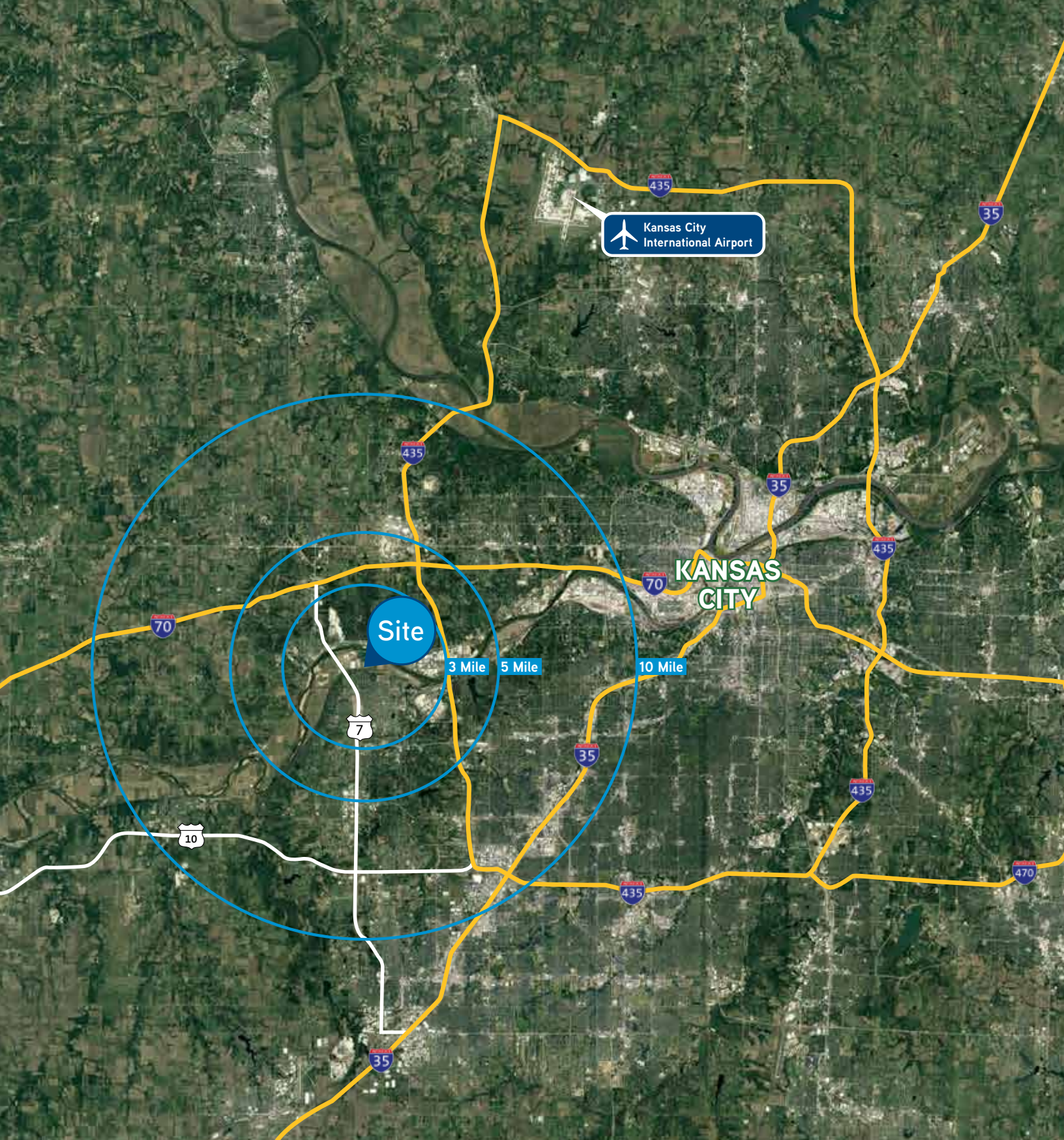
## Utilities

Water	WaterOne
Sanitary Sewer	Johnson County Wastewater (petition for service)
Storm Water	City of Shawnee
Gas	Atmos Energy
Electricity	Eergy, Kansas Central
Fiber	AT&T, Spectrum

Bob Galamba CCIM, SIOR  
 Senior Vice President  
 +1 816 556 1152  
 bob.galamba@colliers.com







Bob Galamba ccim, sior  
Senior Vice President  
+1 816 556 1152  
bob.galamba@colliers.com

