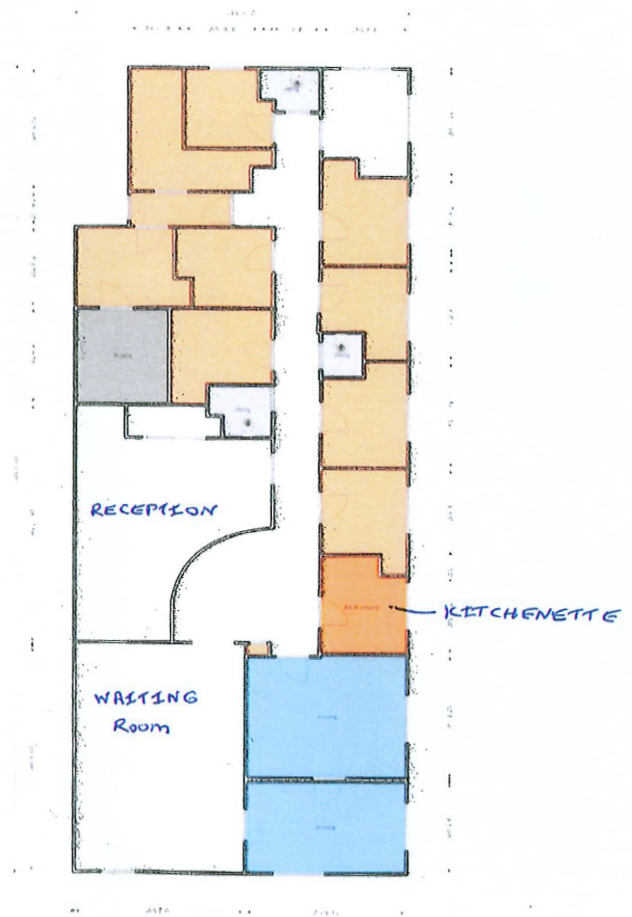


**KING OF PRUSSIA MEDICAL CENTER
491 ALLENDALE ROAD SUITE 121
KING OF PRUSSIA, PA 19406
2,829 SF**



Building Features:

Building Size:	49,344 sf (3 story)	Zoning:	Suburban Metropolitan
Lease Rate:	\$25.00 SF Gross	Parking:	3.86spaces/1,000 SF
Use:	Medical / Office Space	Transportation:	SEPTA Buses 99/125
Year Built:	1969	Available:	February 1, 2026



For more information and/or to schedule an inspection, call Joe Patti at 610.627.3652.