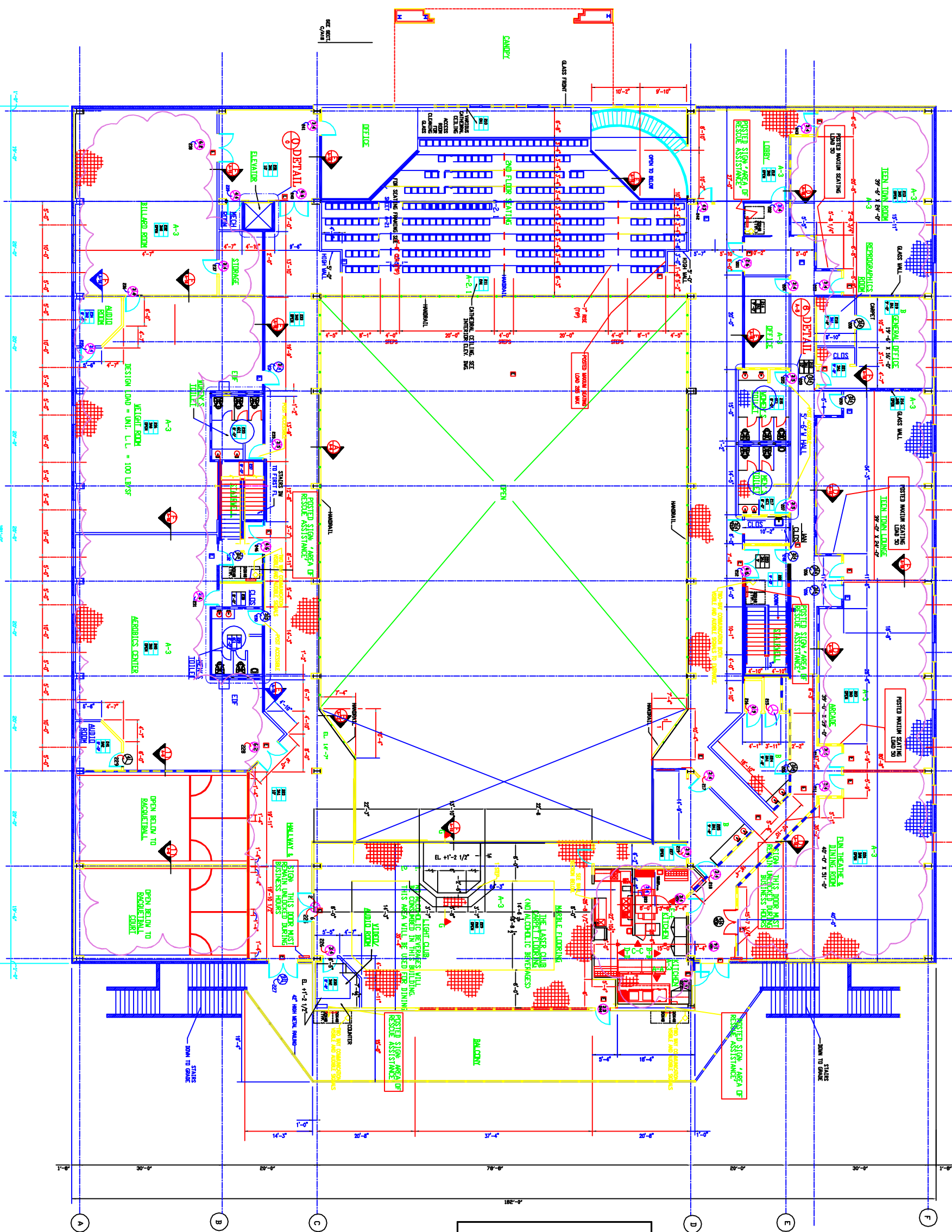


ESTIMATE NO.	ESTIMATE DATE	ESTIMATE TYPE	ESTIMATE BY	ESTIMATE FOR	ESTIMATE VALUE	ESTIMATE UNIT	ESTIMATE PERIOD	ESTIMATE STATUS	ESTIMATE COMMENTS
1-18	1/18/18	PRELIMINARY	ARCHITECT	SAFEPALAZA BUILDING	1,200,000	USD	1-18	PRELIMINARY	PRELIMINARY ESTIMATE
2-18	2/18/18	PRELIMINARY	ARCHITECT	SAFEPALAZA BUILDING	1,200,000	USD	2-18	PRELIMINARY	PRELIMINARY ESTIMATE
3-18	3/18/18	PRELIMINARY	ARCHITECT	SAFEPALAZA BUILDING	1,200,000	USD	3-18	PRELIMINARY	PRELIMINARY ESTIMATE
4-18	4/18/18	PRELIMINARY	ARCHITECT	SAFEPALAZA BUILDING	1,200,000	USD	4-18	PRELIMINARY	PRELIMINARY ESTIMATE
5-18	5/18/18	PRELIMINARY	ARCHITECT	SAFEPALAZA BUILDING	1,200,000	USD	5-18	PRELIMINARY	PRELIMINARY ESTIMATE
6-18	6/18/18	PRELIMINARY	ARCHITECT	SAFEPALAZA BUILDING	1,200,000	USD	6-18	PRELIMINARY	PRELIMINARY ESTIMATE
7-18	7/18/18	PRELIMINARY	ARCHITECT	SAFEPALAZA BUILDING	1,200,000	USD	7-18	PRELIMINARY	PRELIMINARY ESTIMATE
8-18	8/18/18	PRELIMINARY	ARCHITECT	SAFEPALAZA BUILDING	1,200,000	USD	8-18	PRELIMINARY	PRELIMINARY ESTIMATE
9-18	9/18/18	PRELIMINARY	ARCHITECT	SAFEPALAZA BUILDING	1,200,000	USD	9-18	PRELIMINARY	PRELIMINARY ESTIMATE
10-18	10/18/18	PRELIMINARY	ARCHITECT	SAFEPALAZA BUILDING	1,200,000	USD	10-18	PRELIMINARY	PRELIMINARY ESTIMATE
11-18	11/18/18	PRELIMINARY	ARCHITECT	SAFEPALAZA BUILDING	1,200,000	USD	11-18	PRELIMINARY	PRELIMINARY ESTIMATE
12-18	12/18/18	PRELIMINARY	ARCHITECT	SAFEPALAZA BUILDING	1,200,000	USD	12-18	PRELIMINARY	PRELIMINARY ESTIMATE
13-18	1/19/19	PRELIMINARY	ARCHITECT	SAFEPALAZA BUILDING	1,200,000	USD	1-19	PRELIMINARY	PRELIMINARY ESTIMATE
14-18	2/19/19	PRELIMINARY	ARCHITECT	SAFEPALAZA BUILDING	1,200,000	USD	2-19	PRELIMINARY	PRELIMINARY ESTIMATE
15-18	3/19/19	PRELIMINARY	ARCHITECT	SAFEPALAZA BUILDING	1,200,000	USD	3-19	PRELIMINARY	PRELIMINARY ESTIMATE
16-18	4/19/19	PRELIMINARY	ARCHITECT	SAFEPALAZA BUILDING	1,200,000	USD	4-19	PRELIMINARY	PRELIMINARY ESTIMATE
17-18	5/19/19	PRELIMINARY	ARCHITECT	SAFEPALAZA BUILDING	1,200,000	USD	5-19	PRELIMINARY	PRELIMINARY ESTIMATE
18-18	6/19/19	PRELIMINARY	ARCHITECT	SAFEPALAZA BUILDING	1,200,000	USD	6-19	PRELIMINARY	PRELIMINARY ESTIMATE
19-18	7/19/19	PRELIMINARY	ARCHITECT	SAFEPALAZA BUILDING	1,200,000	USD	7-19	PRELIMINARY	PRELIMINARY ESTIMATE
20-18	8/19/19	PRELIMINARY	ARCHITECT	SAFEPALAZA BUILDING	1,200,000	USD	8-19	PRELIMINARY	PRELIMINARY ESTIMATE
21-18	9/19/19	PRELIMINARY	ARCHITECT	SAFEPALAZA BUILDING	1,200,000	USD	9-19	PRELIMINARY	PRELIMINARY ESTIMATE
22-18	10/19/19	PRELIMINARY	ARCHITECT	SAFEPALAZA BUILDING	1,200,000	USD	10-19	PRELIMINARY	PRELIMINARY ESTIMATE
23-18	11/19/19	PRELIMINARY	ARCHITECT	SAFEPALAZA BUILDING	1,200,000	USD	11-19	PRELIMINARY	PRELIMINARY ESTIMATE
24-18	12/19/19	PRELIMINARY	ARCHITECT	SAFEPALAZA BUILDING	1,200,000	USD	12-19	PRELIMINARY	PRELIMINARY ESTIMATE
25-18	1/20/20	PRELIMINARY	ARCHITECT	SAFEPALAZA BUILDING	1,200,000	USD	1-20	PRELIMINARY	PRELIMINARY ESTIMATE
26-18	2/20/20	PRELIMINARY	ARCHITECT	SAFEPALAZA BUILDING	1,200,000	USD	2-20	PRELIMINARY	PRELIMINARY ESTIMATE
27-18	3/20/20	PRELIMINARY	ARCHITECT	SAFEPALAZA BUILDING	1,200,000	USD	3-20	PRELIMINARY	PRELIMINARY ESTIMATE
28-18	4/20/20	PRELIMINARY	ARCHITECT	SAFEPALAZA BUILDING	1,200,000	USD	4-20	PRELIMINARY	PRELIMINARY ESTIMATE
29-18	5/20/20	PRELIMINARY	ARCHITECT	SAFEPALAZA BUILDING	1,200,000	USD	5-20	PRELIMINARY	PRELIMINARY ESTIMATE
30-18	6/20/20	PRELIMINARY	ARCHITECT	SAFEPALAZA BUILDING	1,200,000	USD	6-20	PRELIMINARY	PRELIMINARY ESTIMATE
31-18	7/20/20	PRELIMINARY	ARCHITECT	SAFEPALAZA BUILDING	1,200,000	USD	7-20	PRELIMINARY	PRELIMINARY ESTIMATE
32-18	8/20/20	PRELIMINARY	ARCHITECT	SAFEPALAZA BUILDING	1,200,000	USD	8-20	PRELIMINARY	PRELIMINARY ESTIMATE
33-18	9/20/20	PRELIMINARY	ARCHITECT	SAFEPALAZA BUILDING	1,200,000	USD	9-20	PRELIMINARY	PRELIMINARY ESTIMATE
34-18	10/20/20	PRELIMINARY	ARCHITECT	SAFEPALAZA BUILDING	1,200,000	USD	10-20	PRELIMINARY	PRELIMINARY ESTIMATE
35-18	11/20/20	PRELIMINARY	ARCHITECT	SAFEPALAZA BUILDING	1,200,000	USD	11-20	PRELIMINARY	PRELIMINARY ESTIMATE
36-18	12/20/20	PRELIMINARY	ARCHITECT	SAFEPALAZA BUILDING	1,200,000	USD	12-20	PRELIMINARY	PRELIMINARY ESTIMATE
37-18	1/21/21	PRELIMINARY	ARCHITECT	SAFEPALAZA BUILDING	1,200,000	USD	1-21	PRELIMINARY	PRELIMINARY ESTIMATE
38-18	2/21/21	PRELIMINARY	ARCHITECT	SAFEPALAZA BUILDING	1,200,000	USD	2-21	PRELIMINARY	PRELIMINARY ESTIMATE
39-18	3/21/21	PRELIMINARY	ARCHITECT	SAFEPALAZA BUILDING	1,200,000	USD	3-21	PRELIMINARY	PRELIMINARY ESTIMATE
40-18	4/21/21	PRELIMINARY	ARCHITECT	SAFEPALAZA BUILDING	1,200,000	USD	4-21	PRELIMINARY	PRELIMINARY ESTIMATE
41-18	5/21/21	PRELIMINARY	ARCHITECT	SAFEPALAZA BUILDING	1,200,000	USD	5-21	PRELIMINARY	PRELIMINARY ESTIMATE
42-18	6/21/21	PRELIMINARY	ARCHITECT	SAFEPALAZA BUILDING	1,200,000	USD	6-21	PRELIMINARY	PRELIMINARY ESTIMATE
43-18	7/21/21	PRELIMINARY	ARCHITECT	SAFEPALAZA BUILDING	1,200,000	USD	7-21	PRELIMINARY	PRELIMINARY ESTIMATE
44-18	8/21/21	PRELIMINARY	ARCHITECT	SAFEPALAZA BUILDING	1,200,000	USD	8-21	PRELIMINARY	PRELIMINARY ESTIMATE
45-18	9/21/21	PRELIMINARY	ARCHITECT	SAFEPALAZA BUILDING	1,200,000	USD	9-21	PRELIMINARY	PRELIMINARY ESTIMATE
46-18	10/21/21	PRELIMINARY	ARCHITECT	SAFEPALAZA BUILDING	1,200,000	USD	10-21	PRELIMINARY	PRELIMINARY ESTIMATE
47-18	11/21/21	PRELIMINARY	ARCHITECT	SAFEPALAZA BUILDING	1,200,000	USD	11-21	PRELIMINARY	PRELIMINARY ESTIMATE
48-18	12/21/21	PRELIMINARY	ARCHITECT	SAFEPALAZA BUILDING	1,200,000	USD	12-21	PRELIMINARY	PRELIMINARY ESTIMATE
49-18	1/22/22	PRELIMINARY	ARCHITECT	SAFEPALAZA BUILDING	1,200,000	USD	1-22	PRELIMINARY	PRELIMINARY ESTIMATE
50-18	2/22/22	PRELIMINARY	ARCHITECT	SAFEPALAZA BUILDING	1,200,000	USD	2-22	PRELIMINARY	PRELIMINARY ESTIMATE
51-18	3/22/22	PRELIMINARY	ARCHITECT	SAFEPALAZA BUILDING	1,200,000	USD	3-22	PRELIMINARY	PRELIMINARY ESTIMATE
52-18	4/22/22	PRELIMINARY	ARCHITECT	SAFEPALAZA BUILDING	1,200,000	USD	4-22	PRELIMINARY	PRELIMINARY ESTIMATE
53-18	5/22/22	PRELIMINARY	ARCHITECT	SAFEPALAZA BUILDING	1,200,000	USD	5-22	PRELIMINARY	PRELIMINARY ESTIMATE
54-18	6/22/22	PRELIMINARY	ARCHITECT	SAFEPALAZA BUILDING	1,200,000	USD	6-22	PRELIMINARY	PRELIMINARY ESTIMATE
55-18	7/22/22	PRELIMINARY	ARCHITECT	SAFEPALAZA BUILDING	1,200,000	USD	7-22	PRELIMINARY	PRELIMINARY ESTIMATE
56-18	8/22/22	PRELIMINARY	ARCHITECT	SAFEPALAZA BUILDING	1,200,000	USD	8-22	PRELIMINARY	PRELIMINARY ESTIMATE
57-18	9/22/22	PRELIMINARY	ARCHITECT	SAFEPALAZA BUILDING	1,200,000	USD	9-22	PRELIMINARY	PRELIMINARY ESTIMATE
58-18	10/22/22	PRELIMINARY	ARCHITECT	SAFEPALAZA BUILDING	1,200,000	USD	10-22	PRELIMINARY	PRELIMINARY ESTIMATE
59-18	11/22/22	PRELIMINARY	ARCHITECT	SAFEPALAZA BUILDING	1,200,000	USD	11-22	PRELIMINARY	PRELIMINARY ESTIMATE
60-18	12/22/22	PRELIMINARY	ARCHITECT	SAFEPALAZA BUILDING	1,200,000	USD	12-22	PRELIMINARY	PRELIMINARY ESTIMATE



Room	Area	Allowable Area	Actual Area
1st Floor	8700/27200 = 31.6%	31.6%	8700
2nd Floor	12317/20000 = 61.6%	61.6%	12317
TOTAL	722 < 111%	722	21017

Room	Area	Allowable Area	Actual Area
1st Floor	8700/27200 = 31.6%	31.6%	8700
2nd Floor	12317/20000 = 61.6%	61.6%	12317
TOTAL	722 < 111%	722	21017

NOTE: 1. ALL CEILING HEIGHT LABELED
 2. SEE SHEET A-1 FOR WALL DESIGNATION CODE.

FINAL DATE: BUILD-OUT 3 PER COMMENTS 4-22-21
 GENERAL REVISIONS: 1 PER COMMENTS 1-12-20

7015 BAYVIEW ST. 7130 654-1976 HULL, TEXAS
SAFEPALAZA BUILDING
2ND FLOOR PLAN

Light Ministries
 SAFEPALAZA BUILDING PROJECT
 NEW LIGHT CHURCH - SOUTH
 A-2
 REV. 3