

COMMUNITY FACILITY

at the
WILLIAMVALE



Lantern

Real Estate Advisors + Partners



PREMISES

Ground Floor **9,341 SF**
16' Ceiling Height

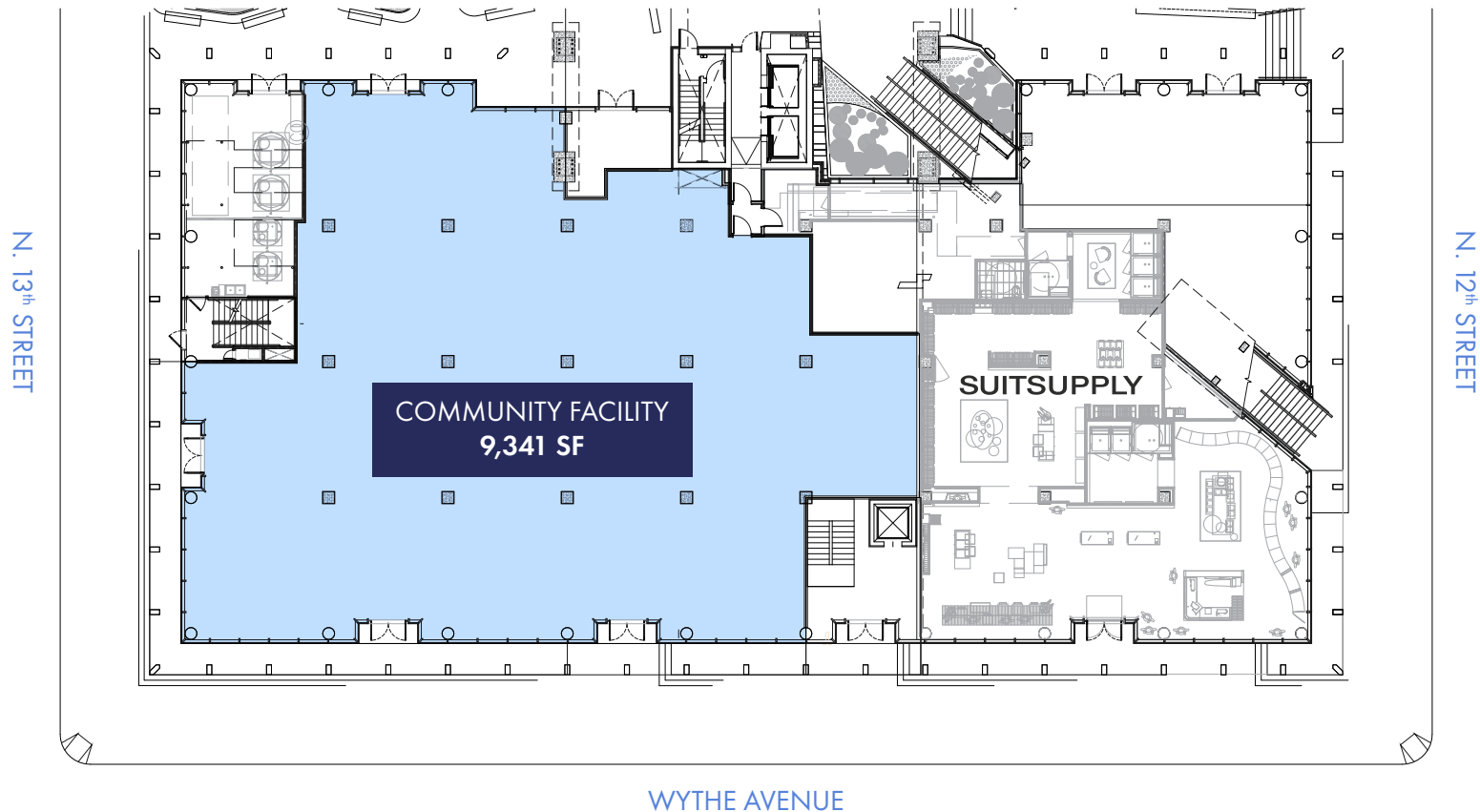
Frontage **80'** on Wythe Avenue
45' on N. 13th Street

Possession **Immediate**

Neighboring Tenants **KITH, Brooklyn Bowl, Bathhouse, Le Crocodile, Brooklyn Brewery, Leuca, Suitsupply, Laser Wolf**

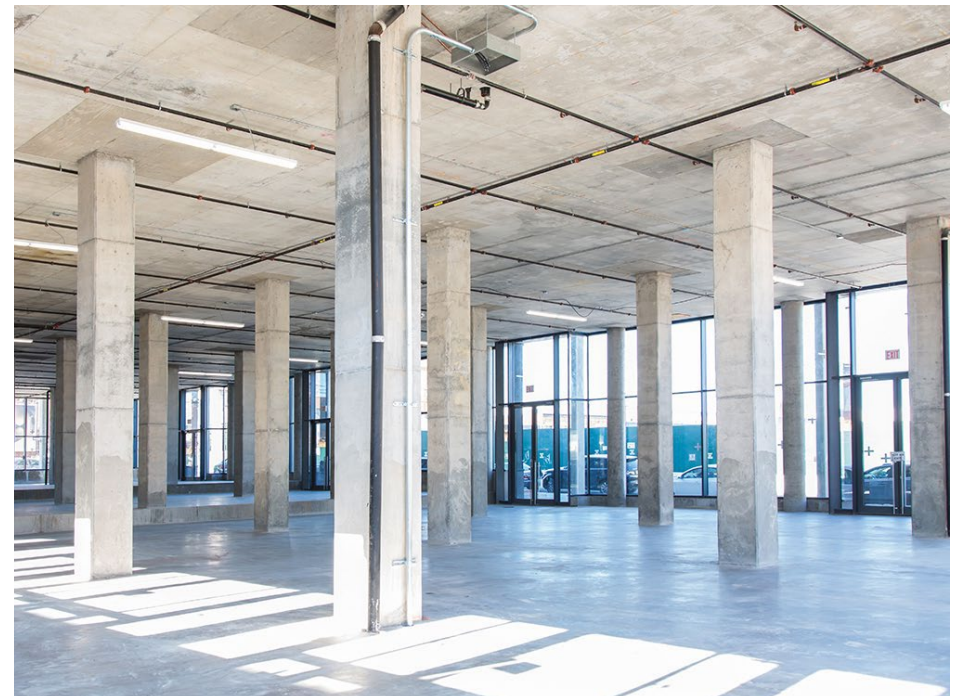
- **At the base of the William Vale Hotel**
- **Previous Tenant Northwell Health's buildout still in place**
- **Surrounded by Williamsburg's hotels such as the Arlo Hotel, The Wythe Hotel, The Hoxton, and Coda Williamsburg**

- Accepted Uses
- **Higher Educational Facilities: Colleges, Universities, Dormitories, Fraternity or Sorority Houses, Libraries, Museums**
 - **Long Term Care Facility**
 - **House Of Worship: Churches, Synagogues, Mosques, Temples, Monasteries, Convents**
 - **Medical Facilities: Hospital, Ambulatory, Diagnostic or Treatment Centers, Medical Offices, Not-for-Profit Medical Staff Dwelling**
 - **Clubs & Organizations: Non-Commercial Clubs, Community Centers, Non-Commercial Recreation Centers**



ACCEPTED USES

- Higher Educational Facilities: Colleges, Universities, Dormitories, Fraternity or Sorority Houses, Libraries, Museums
- Long Term Care Facility
- House Of Worship: Churches, Synagogues, Mosques, Temples, Monasteries, Convents
- Medical Facilities: Hospital, Ambulatory, Diagnostic or Treatment Centers, Medical Offices, Not-for-Profit Medical Staff Dwelling
- Clubs & Organizations: Non-Commercial Clubs, Community Centers, Non-Commercial Recreation Centers







COMMUNITY FACILITY

at the
WILLIAM VALE

MATTHEW SEIGEL
matthew@lanterncompany.com

JUSTIN ABIZADEH
justin@lanterncompany.com

+1 (646) 970-3223
www.lanterncompany.com

Lantern
Real Estate Advisors + Partners