

# FOR LEASE OFFICE

1814 EUCLID AVE.

CHARLOTTE | NC 28203



## CONTACT



William Haygood, III  
704.833.8183  
[haygood@boundarycre.com](mailto:haygood@boundarycre.com)  
Lic. #290707





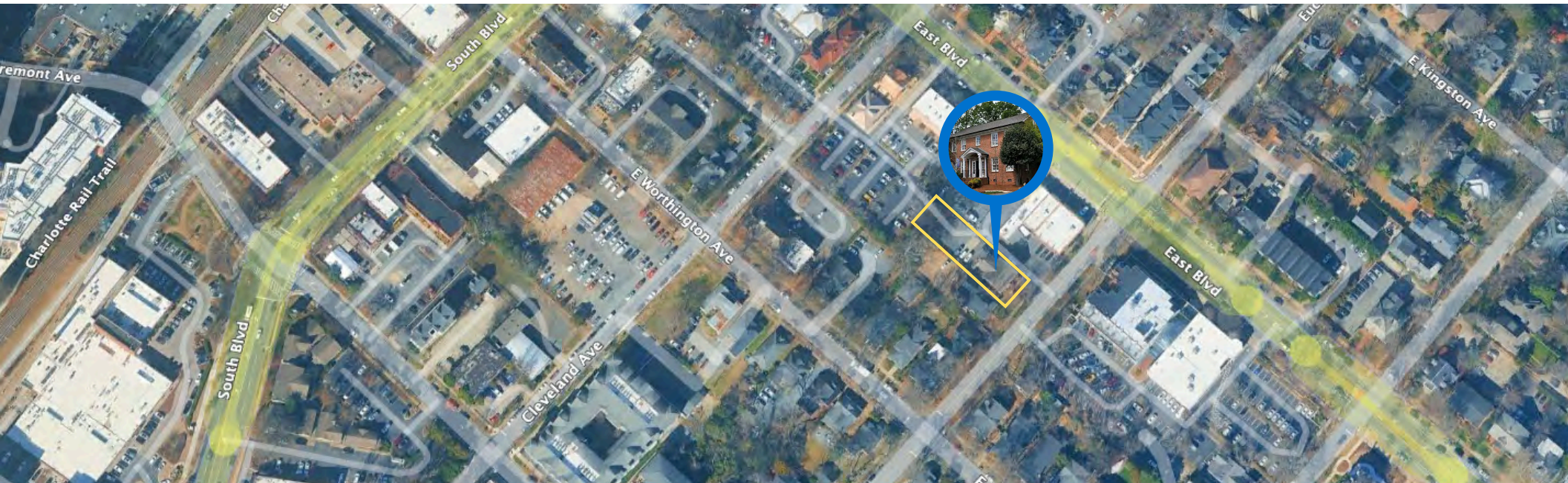
# ABOUT THE PROPERTY

Office for Lease | ±3,368 SF | 2.5 Stories | NC (HDO) Zoning  
7 Offices | 2 ADA Restrooms Downstairs / 2 Restrooms Upstairs |  
Kitchenette/Break Room | Bonus Attic Storage with Easy Access |  
Freshly Painted interior with High-End Finishes | Onsite Parking

Lease Rate | \$10,000 Flat Rate/month + TICAM \$1,750/month (NNN)

Discover an exceptional leasing opportunity at 1814 Euclid Avenue, nestled in the heart of Charlotte's historic Dilworth neighborhood. This charming two-story office building, constructed in 1935, seamlessly blends classic architectural details with modern updates, offering a unique and inspiring workspace. The property is also within walking distance to numerous restaurants, shops, and public transportation options, including the Lynx Blue Line light rail. This prime location offers both convenience and a prestigious address for your business.

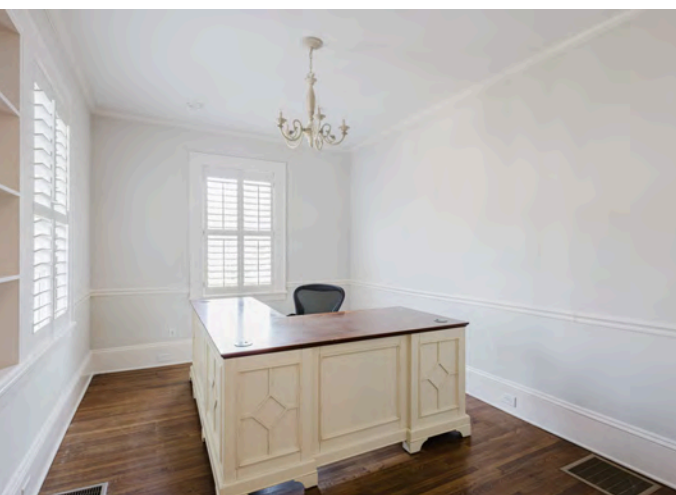
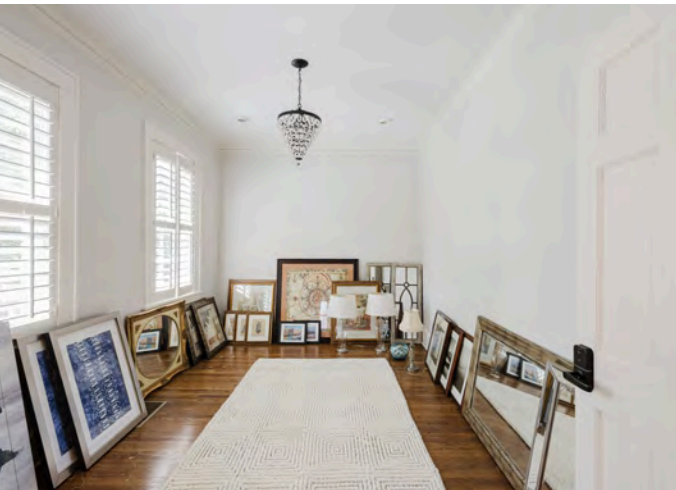
## 1814 EUCLID AVE.



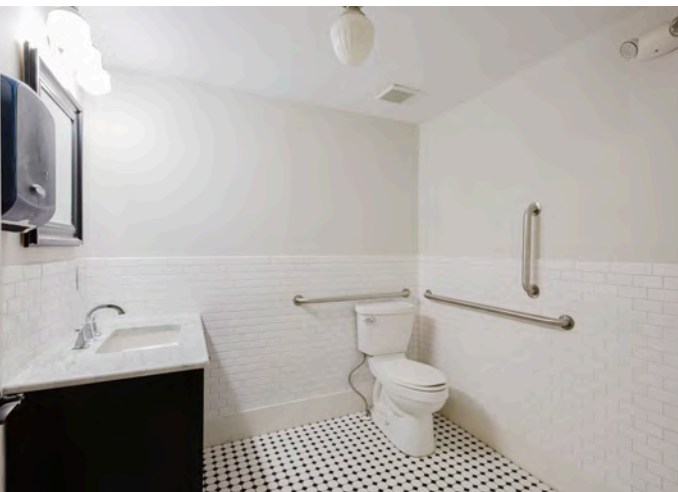




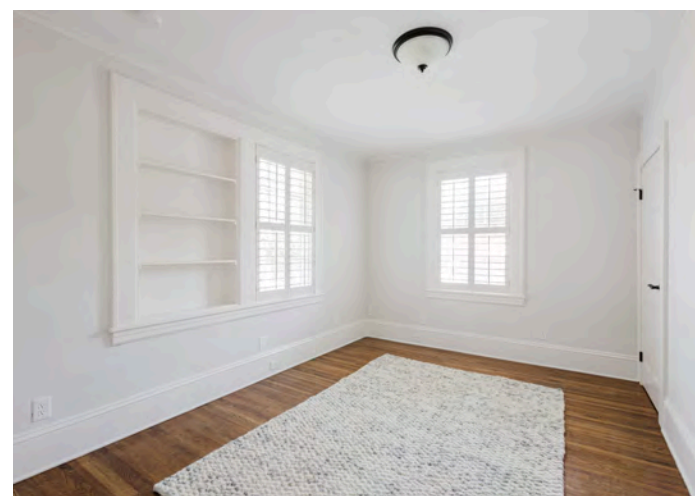
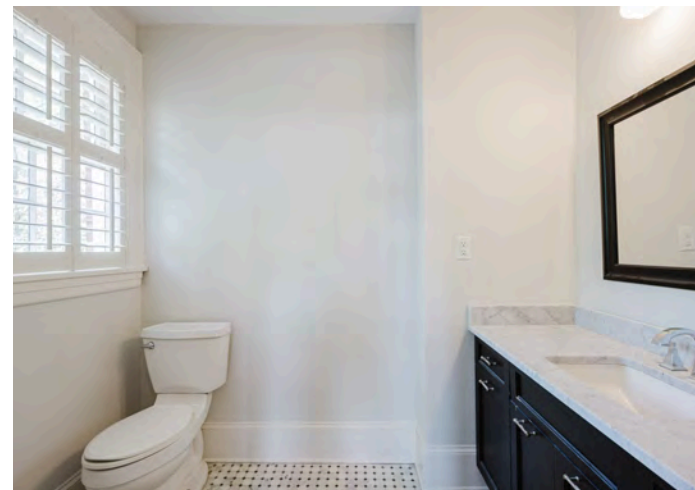














## QUICK FACTS

- **Prime Location:** Just 1 mile from Uptown Charlotte and walkable to the East/West and New Bern LYNX Blue Line light rail stations.
- **Affluent Demographics:** Median household income exceeds \$120,000, with a highly educated, professional population.
- **Historic Appeal:** Home to Charlotte's first streetcar suburb, featuring a mix of preserved bungalows, updated commercial buildings, and adaptive reuse spaces.



## LOCATION OVERVIEW

# DILWORTH NEIGHBORHOOD

Nestled just minutes from Uptown Charlotte, Dilworth is one of the city's most desirable and well-established neighborhoods. Known for its tree-lined streets, historic charm, and walkable layout, Dilworth blends classic Southern architecture with modern amenities. This vibrant area is home to a thriving mix of local boutiques, award-winning restaurants, wellness studios, and professional offices — all anchored by the energy of nearby medical and corporate campuses. With strong foot traffic, excellent visibility, and close proximity to public transit and major roadways, Dilworth offers an ideal setting for businesses seeking a prestigious address in a dynamic, community-focused environment.





SOUTH BLVD

East South Crossing

Dimensional Place

The RailYard South End

Uptown

Townhomes

EAST BLVD

1814 Euclid Avenue

EUCLID AVE

12,600 VPD

SEEMINGLY OVERZEALOUS ICE CREAM

sunhour

300 EAST

SALON ON EAST

Nadas ITALY

704

COPIER

SOUTHERN

THAI TASTE

PaperSkyscraper





1814 EUCLID AVENUE | CHARLOTTE, NC

## CONTACT



William Haygood, III  
704.833.8183  
haygood@boundarycre.com  
Lic. #290707



Boundary Street Advisors  
301 E. Tremont Ave. | Charlotte, NC, 28203  
hello@boundarycre.com  
[www.boundarycre.com](http://www.boundarycre.com)

© Boundary Street Advisors. All rights reserved. The information contained herein has been obtained from sources deemed reliable but has not been verified and no guarantee, warranty or representation, either express or implied, is made with respect to such information. Terms of sale or lease and availability are subject to change or withdrawal without notice.