



20418 Commerce Park Dr, Westfield, IN
46074



NORTH ELEVATION



SOUTH ELEVATION

LOT 2 | ±28,000 SF AVAILABLE

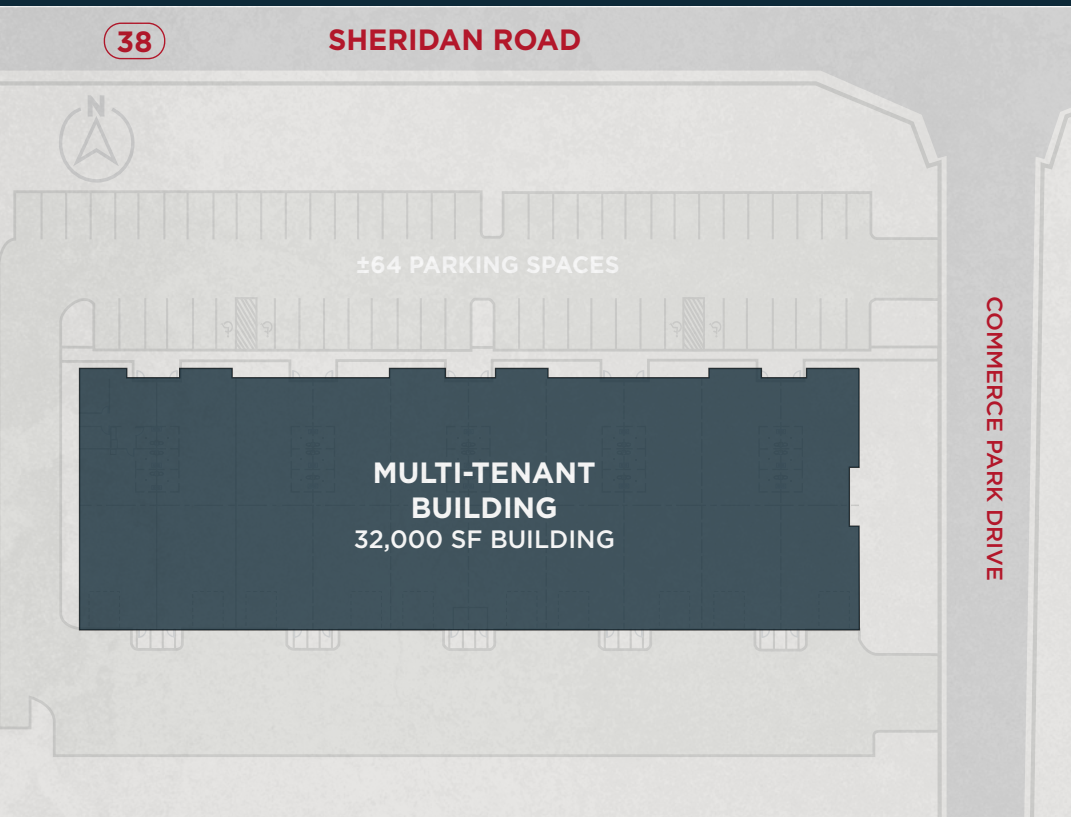
DIVISIBLE TO ±4,000 SF

For Lease or Sale

[VIEW WEBSITE](#)



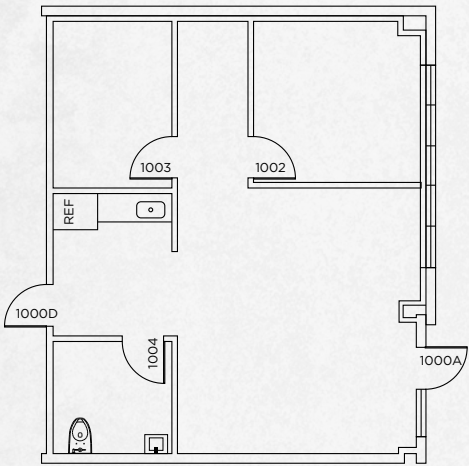
Site Plan



BUILDING 2 Specifications

±28,000 SF AVAILABLE

ACREAGE	±2.3 ACRES
BUILDING SQUARE FOOTAGE	±32,000 SF
MINIMUM DIVISIBLE SF	4,000 SF (INCLUDING 800 SF MEZZANINE)
# OF DRIVE-IN DOORS AND SIZE	10 (12' X 14')
CLEAR HEIGHT	±18' CLEAR
COLUMN SPACING	32-FOOT STANDARD BAY WIDTH. COLUMN LINE AT CENTER OF DEPTH (50 FEET)
CAR PARKING	64
BUILDING DIMENSIONS	±100' DEEP BY ±320' LONG
SPRINKLE	SPRINKLED
FLOOR THICKNESS	±6" FLOOR THICKNESS
ROOF	STANDING SEAM METAL
POWER	10 SERVICES AT 200 AMPS EACH
ZONING	PUD
TAX ABATEMENT	10-YEAR TAX ABATEMENT AVAILABLE (SPECIFICS TO BE PROVIDED)

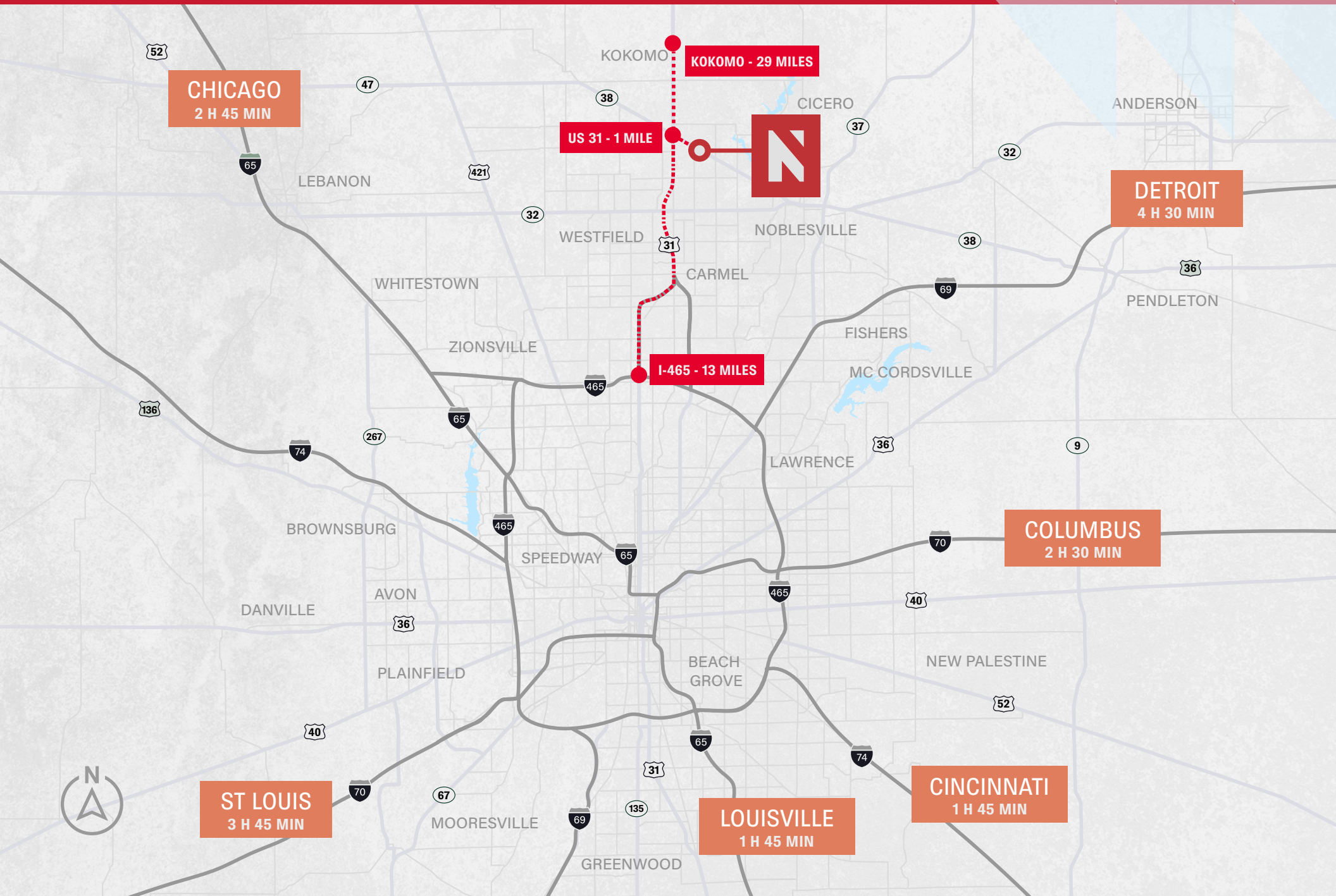


Template Office Space Plan

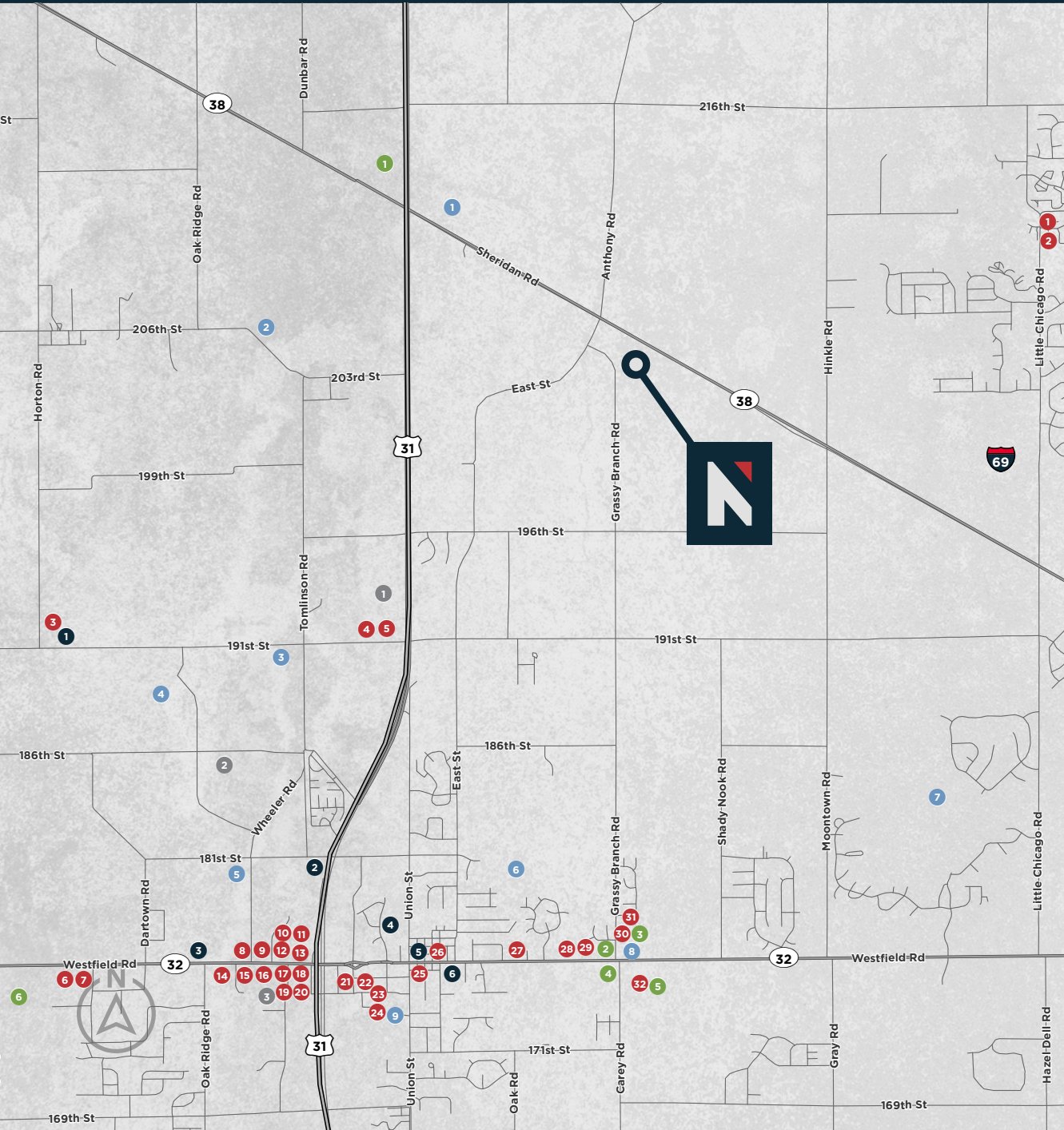
Access and Location



Drive Time Map



Amenities Map



ENTERTAINMENT

1. West Fork Distillery
2. Grand Junction Brewing Co
3. Birdie's Golf & Sports Bar
4. Four Finger Distillery
5. Westfield Wine Vault
6. Field Brewing Co

HOTELS

1. Spring Hill Suites
2. Wyndham Westfield
3. Hampton Inn

RECREATION

1. MacGregor Park
2. Chatham Hills Golf Course
3. Monon Rail Trail
4. Grand Park
5. Westfield YMCA
6. Freedom Trail Park
7. Pebble Brook Golf Course
8. Planet Fitness
9. Grand Junction Plaza

SHOPPING

1. Hamilton Crossroads
2. CVS Pharmacy
3. Ace Hardware
4. Walgreen's
5. Kroger
6. Meijer

RESTAURANTS

1. Pizza King
2. The Piper
3. The Mash House
4. Starbucks Coffee
5. Wendy's
6. Slim Chickens
7. Sonic Drive-In
8. Chick-Fil-A
9. Portillo's
10. Dunkin
11. Bub's Burgers
12. McDonald's
13. Culver's
14. Thai Isaan
15. Denny's
16. Saladworks
17. Los Agaves
18. Titus Bakery & Deli
19. Noble Romans Craft Pizza
20. Jimmy John's
21. Rivet Coffee Bar
22. Chiba Sushi
23. The Italian House on Park
24. Nyla's
25. Union Jack Pub
26. Ben's BBQ Shack
27. Big Hoffa's Smokehouse
28. Pasto Italiano
29. Lincoln Square Pancake House
30. Rail Cafe
31. Nori Steakhouse
32. Carey Tavern



NorthPoint
COMMERCE PARK



NORTH ELEVATION



SOUTH ELEVATION

For More Information, Please Contact:

RYAN E. BAKER, SIOR, CCIM
EXECUTIVE MANAGING DIRECTOR
+1 317 352 5428
ryan.baker@cushwake.com

©2025 Cushman & Wakefield. All rights reserved. The information contained in this communication is strictly confidential. This information has been obtained from sources believed to be reliable but has not been verified. no warranty or representation, express or implied, is made as to the condition of the property (or properties) referenced herein or as to the accuracy or completeness of the information contained herein, and same is submitted subject to errors, omissions, change of price, rental or other conditions, withdrawal without notice, and to any special listing conditions imposed by the property owner(s). any projections, opinions or estimates are subject to uncertainty and do not signify current or future property performance.

