



FOR LEASE

RETAIL PROPERTY

Vallejo Plaza

3325 Sonoma Blvd
Vallejo, CA 94590

**LEASE RATE: \$2.00 - 2.50
SF/MONTH (NNN)**

983 - 7,064 SF AVAILABLE



Jeffrey Helm

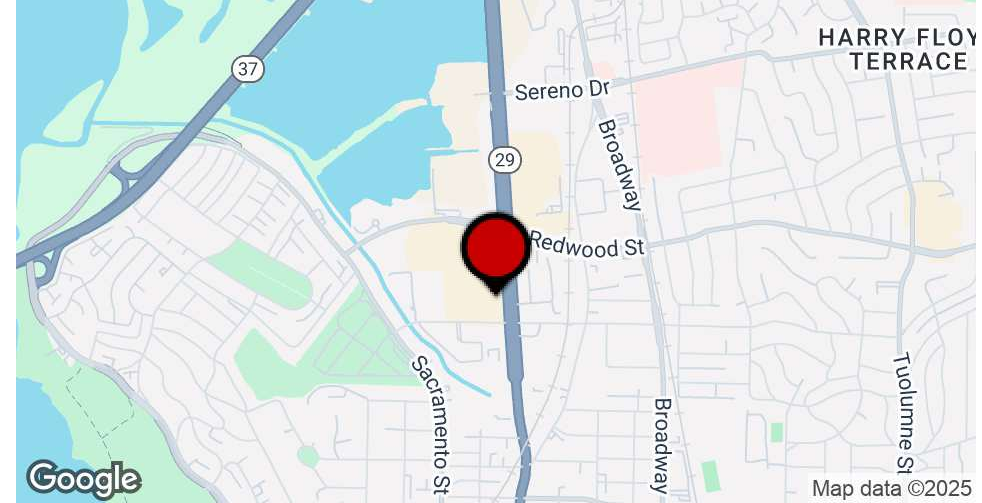
Broker
CalDRE #01428618
949.624.0630
jeff@helmre.com

The calculations and data presented are deemed to be accurate, but not guaranteed. They are intended for the purpose of illustrative projections and analysis. The information provided is not intended to replace or serve as substitute for any legal, accounting, investment, real estate, tax or other professional advice, consultation or service. The user of this software should consult with a professional in the respective legal, accounting, tax or other professional area before making any decisions.

Executive Summary

Vallejo Plaza

3325 Sonoma Blvd, Vallejo, CA 94590



OFFERING SUMMARY

Lease Rate:	\$2.00 - 2.50 SF/MO (NNN)
Building Size:	239,498 SF
Available SF:	983 - 7,064 SF
Lot Size:	19.12 Acres
Number of Units:	48
Year Built:	1961
Renovated:	1986
Zoning:	CP
Market:	Vallejo
Traffic Count:	15,275

PROPERTY OVERVIEW

Welcome qualified tenants! We have an amazing opportunity for you - potential free rent in an incredibly high-traffic area with 24/7 365 video monitoring service for your safety and security. Situated on Sonoma Blvd (31,833 ADT) & Redwood St (17,168 ADT) between two signalized intersections and anchored by Seafood City, Planet Fitness, DD's Discounts, and more, this is an offer you don't want to miss. Come take advantage of this friendly offer and secure yourself a spot in this amazing area.

PROPERTY HIGHLIGHTS

- Potential free rent for qualified tenants
- High Traffic on Sonoma Blvd (31,833 ADT) & Redwood St (17,168 ADT)
- Two Signalized Intersections
- Anchored by Seafood City, Planet Fitness, DD's Discounts, & Foot Locker
- 7 Ingress and egress points around the property.
- 24/7 365 Video Monitoring Service

Jeffrey Helm

Broker

CalDRE #01428618

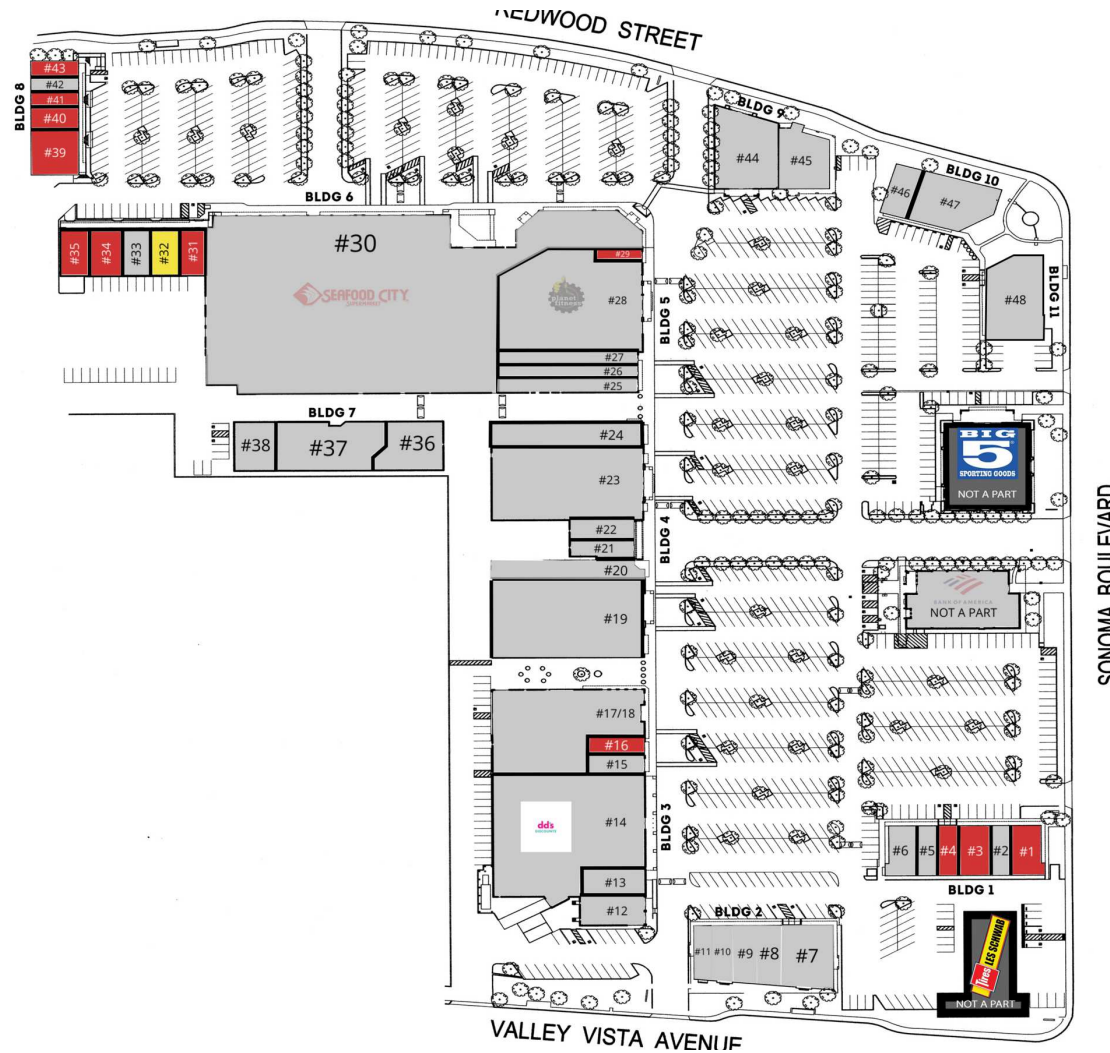
949.624.0630

jeff@helmre.com

The calculations and data presented are deemed to be accurate, but not guaranteed. They are intended for the purpose of illustrative projections and analysis. The information provided is not intended to replace or serve as substitute for any legal, accounting, investment, real estate, tax or other professional advice, consultation or service. The user of this software should consult with a professional in the respective legal, accounting, tax or other professional area before making any decisions.

Vallejo Plaza

3325 Sonoma Blvd, Vallejo, CA 94590



Jeffrey Helm

Broker

CalDRE #01428618

949.624.0630

jeff@helmre.com

The calculations and data presented are deemed to be accurate, but not guaranteed. They are intended for the purpose of illustrative projections and analysis. The information provided is not intended to replace or serve as substitute for any legal, accounting, investment, real estate, tax or other professional advice, consultation or service. The user of this software should consult with a professional in the respective legal, accounting, tax or other professional area before making any decisions.

Lease Spaces

Vallejo Plaza

3325 Sonoma Blvd, Vallejo, CA 94590



LEASE INFORMATION

Lease Type:	NNN	Lease Term:	Negotiable
Total Space:	983 - 3,600 SF	Lease Rate:	\$2.00 - \$2.50 SF/month

AVAILABLE SPACES

SUITE	TENANT	SIZE (SF)	LEASE TYPE	LEASE RATE
#1 - 3325-10	Available	2,430 SF	NNN	Negotiable
#3 - 3325-20A	Available	2,410 SF	NNN	\$2.50 SF/month
#4 - 3325-60	Available	1,200 SF	NNN	\$2.50 SF/month
#16 - 3355-30	Available	1,100 SF	NNN	Negotiable
#29 - 3555-10	Available	1,160 SF	NNN	Negotiable
#31 - 485-10	Available	1,800 - 3,600 SF	NNN	\$2.00 SF/month
#32 - 485-20	Available	1,800 SF	NNN	\$2.00 SF/month
#34 - 485-40	Available	983 - 3,600 SF	NNN	\$2.00 SF/month
#35 - 485-70	Available	2,617 - 3,600 SF	NNN	\$2.00 SF/month
#39 - 475-1-20	Available	2,500 SF	NNN	\$2.00 SF/month
#40 - 475-30	Available	1,500 SF	NNN	\$2.00 SF/month
#41 - 475-50	Available	1,000 SF	NNN	\$2.00 SF/month
#43 - 475-70	Available	1,000 SF	NNN	\$2.00 SF/month

Jeffrey Helm

Broker

CalDRE #01428618

949.624.0630

jeff@helmre.com

The calculations and data presented are deemed to be accurate, but not guaranteed. They are intended for the purpose of illustrative projections and analysis. The information provided is not intended to replace or serve as substitute for any legal, accounting, investment, real estate, tax or other professional advice, consultation or service. The user of this software should consult with a professional in the respective legal, accounting, tax or other professional area before making any decisions.

Advanced Security Technologies

Vanguard specializes in custom design and implementation of Live Remote Monitoring Systems and Strategies in an effort to eliminate the need for costly, on-site, uniformed guard services.

In Northern California, we use our own trained and licensed technicians. When we secure facilities outside of our travel territory, we use authorized dealers. Wherever we serve, we continually offer world class service and equipment to ensure our clients' security systems are fully operational every day.

Our Advanced Video Monitoring Systems:

- Fulfills the Roll of On-Site Security Guards
- Provides Increased Security While Decreasing Costs
- Immediate, Real Time Response Capabilities
 - Video Triggered Alarms
 - "Voice Down" Technology



• IP Camera Systems

• Access Control

• Exterior Security Lighting

• Sirens / Speakers / Strobes

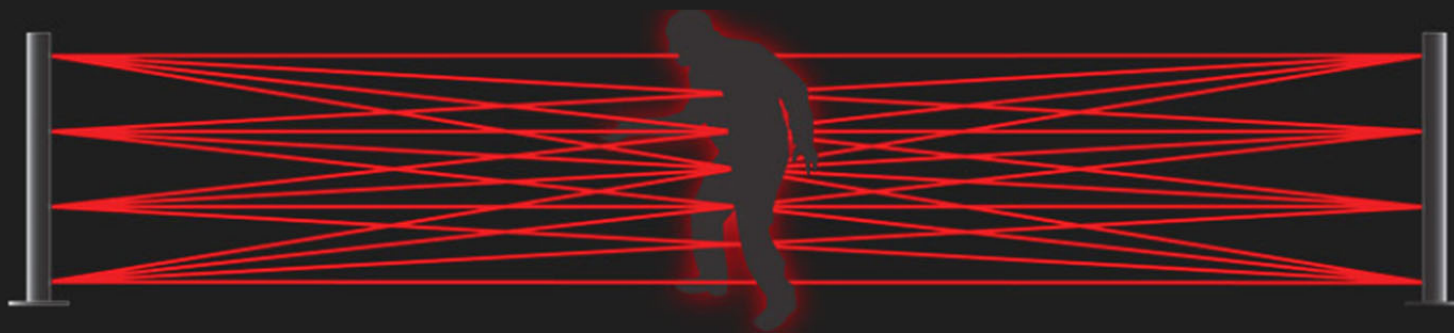
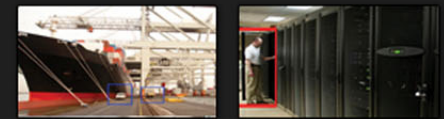
• Free Consultive Security Evaluations

• Scheduled Virtual Guard Tours

• Voice Down Technology

• Video Monitoring 24/7 365

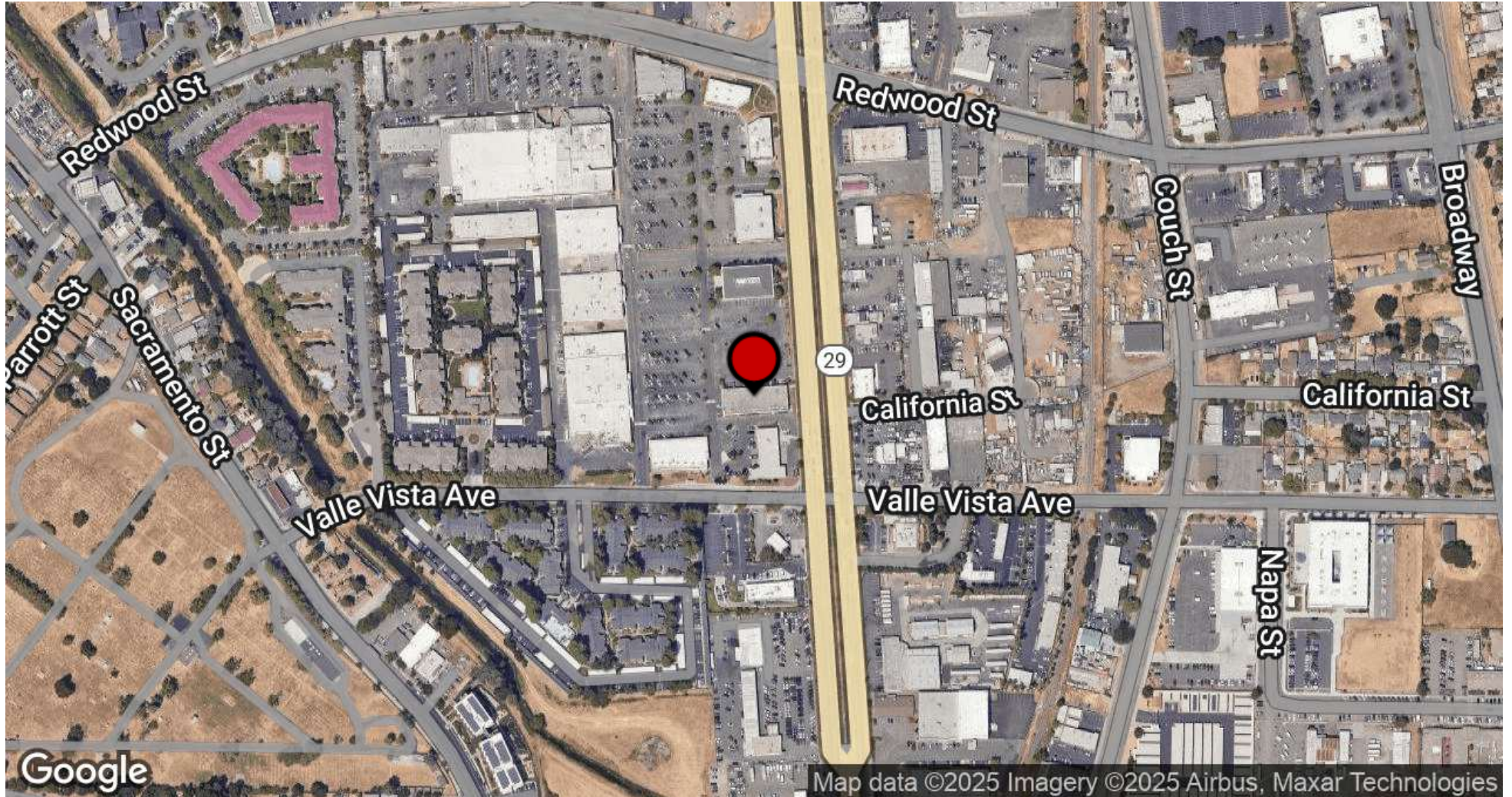
- Industrial
- Commercial
- Residential



Location Map

Vallejo Plaza

3325 Sonoma Blvd, Vallejo, CA 94590



Jeffrey Helm

Broker

CalDRE #01428618

949.624.0630

jeff@helmre.com

The calculations and data presented are deemed to be accurate, but not guaranteed. They are intended for the purpose of illustrative projections and analysis. The information provided is not intended to replace or serve as substitute for any legal, accounting, investment, real estate, tax or other professional advice, consultation or service. The user of this software should consult with a professional in the respective legal, accounting, tax or other professional area before making any decisions.

Additional Photos

Vallejo Plaza

3325 Sonoma Blvd, Vallejo, CA 94590



Jeffrey Helm

Broker

CalDRE #01428618

949.624.0630

jeff@helmre.com

The calculations and data presented are deemed to be accurate, but not guaranteed. They are intended for the purpose of illustrative projections and analysis. The information provided is not intended to replace or serve as substitute for any legal, accounting, investment, real estate, tax or other professional advice, consultation or service. The user of this software should consult with a professional in the respective legal, accounting, tax or other professional area before making any decisions.

Demographics Map & Report

Vallejo Plaza

3325 Sonoma Blvd, Vallejo, CA 94590

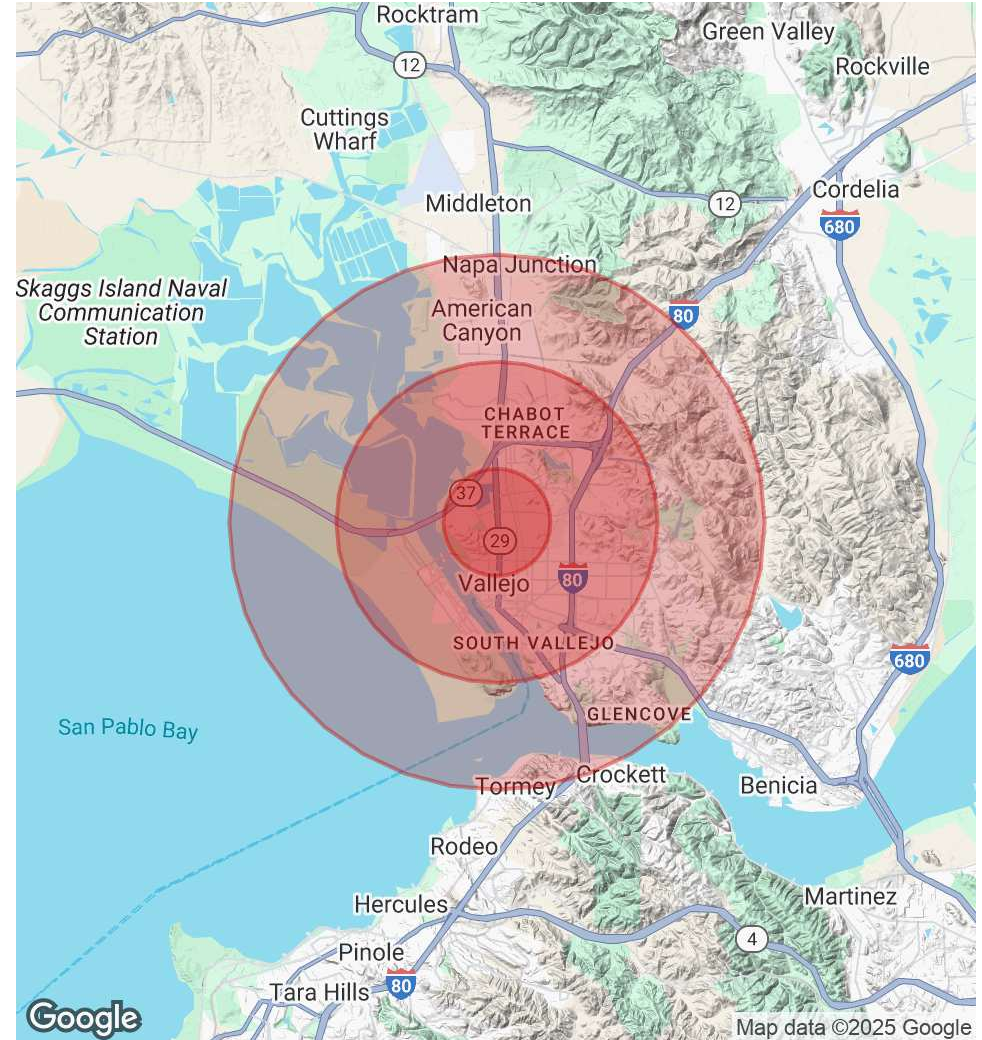


POPULATION	1 MILE	3 MILES	5 MILES
Total Population	15,483	104,154	160,933
Average Age	36.9	36.3	36.8
Average Age (Male)	34.8	34.2	34.9
Average Age (Female)	39.2	38.2	38.6

HOUSEHOLDS & INCOME	1 MILE	3 MILES	5 MILES
Total Households	6,153	36,204	55,189
# of Persons per HH	2.5	2.9	2.9
Average HH Income	\$58,583	\$66,693	\$73,351
Average House Value	\$330,259	\$359,114	\$388,561

RACE	1 MILE	3 MILES	5 MILES
Total Population - White	6,418	38,739	61,274
Total Population - Black	3,318	22,370	32,080
Total Population - Asian	2,419	21,708	37,794
Total Population - Hawaiian	188	1,085	1,595
Total Population - American Indian	120	670	1,055
Total Population - Other	2,074	12,377	16,316

* Demographic data derived from 2020 ACS - US Census



Jeffrey Helm

Broker
 CalDRE #01428618
 949.624.0630
 jeff@helmre.com

The calculations and data presented are deemed to be accurate, but not guaranteed. They are intended for the purpose of illustrative projections and analysis. The information provided is not intended to replace or serve as substitute for any legal, accounting, investment, real estate, tax or other professional advice, consultation or service. The user of this software should consult with a professional in the respective legal, accounting, tax or other professional area before making any decisions.

CONFIDENTIALITY AND DISCLAIMER


The information contained in the following Marketing Brochure is proprietary and strictly confidential. It is intended to be reviewed only by the party receiving it from Helm Properties Commercial Real Estate Division and should not be made available to any other person or entity without the written consent of Helm Properties Commercial Real Estate Division. This Marketing Brochure has been prepared to provide summary, unverified information to prospective purchasers, and to establish only a preliminary level of interest in the subject property. The information contained herein is not a substitute for a thorough due diligence investigation. Helm Properties Commercial Real Estate Division has not made any investigation, and makes no warranty or representation, with respect to the income or expenses for the subject property, the future projected financial performance of the property, the size and square footage of the property and improvements, the presence or absence of contaminating substances, PCB's or asbestos, the compliance with State and Federal regulations, the physical condition of the improvements thereon, or the financial condition or business prospects of any tenant, or any tenant's plans or intentions to continue its occupancy of the subject property. The information contained in this Marketing Brochure has been obtained from sources we believe to be reliable; however, Helm Properties Commercial Real Estate Division has not verified, and will not verify, any of the information contained herein, nor has Helm Properties Commercial Real Estate Division conducted any investigation regarding these matters and makes no warranty or representation whatsoever regarding the accuracy or completeness of the information provided.


All potential buyers or tenants must take appropriate measures to verify all of the information set forth herein.

ALL PROPERTY SHOWINGS ARE BY APPOINTMENT ONLY. PLEASE CONSULT YOUR HELM PROPERTIES COMMERCIAL REAL ESTATE DIVISION AGENT FOR MORE DETAILS.

JEFFREY HELM


Lic: 01428618


 530.329.8336

 949.624.0630

LUCAS HELM

Lic: 02140876

 530.329.8336

 530.788.8887



471 Century Park Drive, Suite B, Yuba City, CA 95991

www.helmre.com